

SHOE BOX

Owner's Manual



FOLLOW US:



THANK YOU FOR PURCHASING OUR PRODUCT!

Endless possibilities with the new space Collection gave you!

Thank you for choosing our products as your home storage destination.
We appreciate your business and the opportunity to serve you.

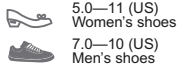
Take away all the unnecessary frills and clutter from your decor and give your home or office a new life. We offer a comprehensive storage solution that takes your pile and organizes it into a neat living arrangement. Our storage methods help you reclaim your living space to foster a stress-free, free-flowing, productive environment.

If you have any questions, please feel free to contact us by email (service@sundaleoutdoor.com). Our after-sales customer service team will do their best to help you out of everything.

Thank You!

Clik stackable shoe box

Stackable Shoe Box - s



5.0—11 (US)
Women's shoes

7.0—10 (US)
Men's shoes

Available color : Clear, Grey
Size : 33.4 x 23 x 14cm
SB002TP-WHT (6PCS)
SB003TP-WHT (8PCS)
SB001TP-WHT (12PCS)
SB001TP-GRY (12PCS)
D-SB012NWH-TG (12PCS)
A-SB001TP-GRY (12PCS)

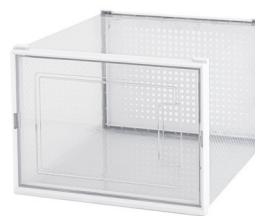
Stackable Shoe Box - M



7.0—12 (US)
Men's shoes

Available color : Black
Size : 35 x 25 x 18.7cm
W-MB008-BLK (8PCS)

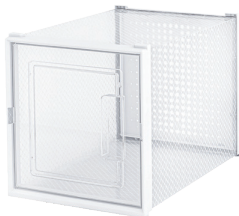
Stackable Shoe Box - L



8.0—14 (US)
Men's shoes

Available color : Clear
Size : 36 x 28 x 21 cm
W-LB004-WHT (4PCS)
W-LB006-WHT (6PCS)

Stackable High Heel Shoe Box



5.0—10 (US)
Women's shoes

Available color : Clear
Size : 21 x 22.5 x 33.4 cm
W-HB008WHT (8PCS)

Stackable Boot Box



Boot

Available color : Clear
Size : 52 x 32 x 14cm
A-BB008WHT (6PCS)

Complimentary:
boot-shaper



CRYSTAL CLEAR SHOE BOXES



5.0—12 (US)
Women's shoes



7.0—10 (US)
Men's shoes

Available color : Black
Size : 34 x 24 x 16cm
W-SB006FT-BLK (6PCS)

Click stackable shoe box

Stackable Organization Set-S

15PCS



Size: 33.4 x 23 x 14 cm

SB015TP-WHT

Ideal for: sneaker, causal shoes, slipper, kids shoes and so on

Stackable Organization Set-L

12PCS



Size: 36 x 28 x 21 cm

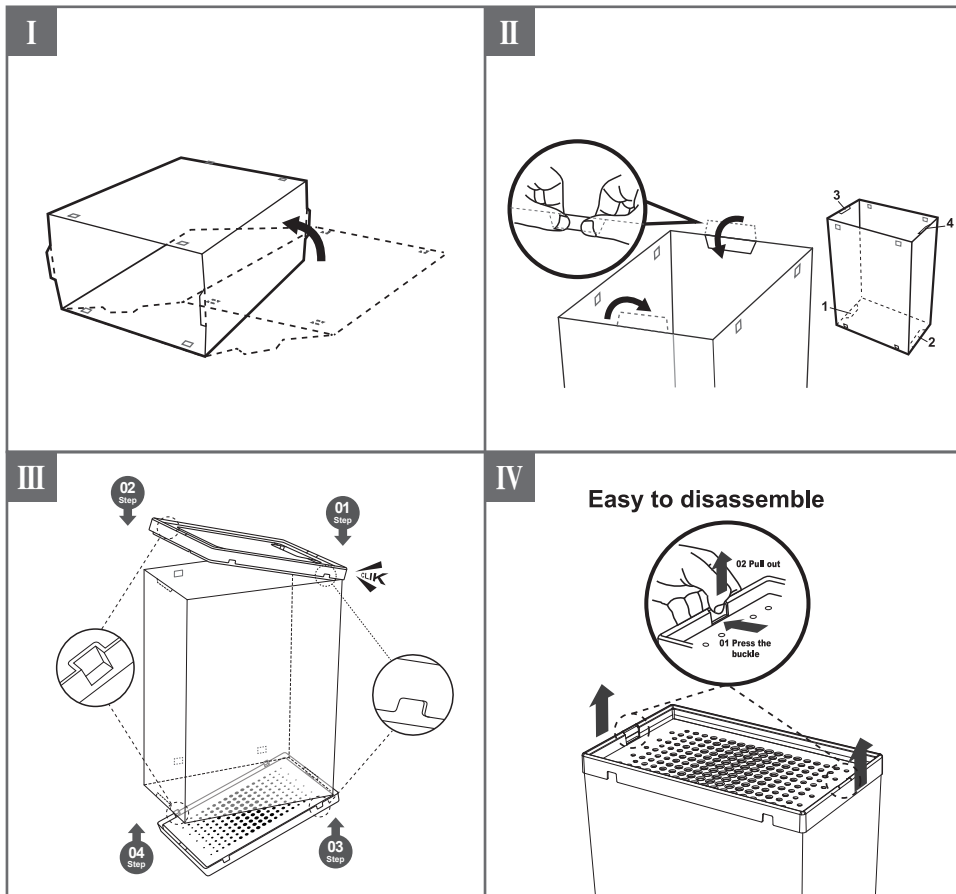
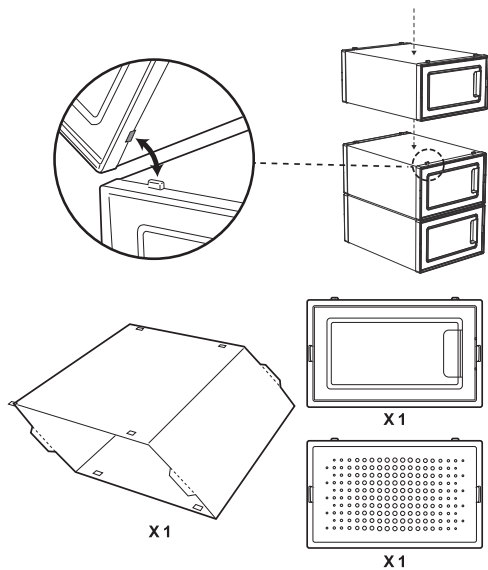
W-LB012-WHT

Ideal for: martin shoes, ankle shoes, it also suitable for closing, cosmetic and toys.

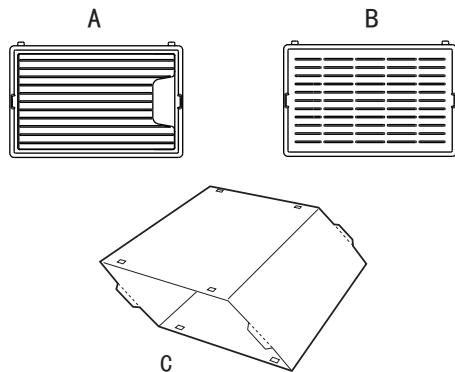
Click stackable shoe box | Assemble Instruction



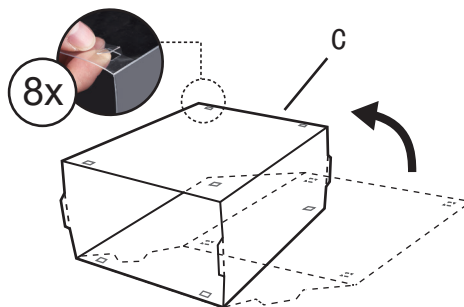
ASSEMBLY INSTRUCTION VIDEO
Scan with your phone's camera



Crystal clear shoe boxes | Assemble Instruction



I



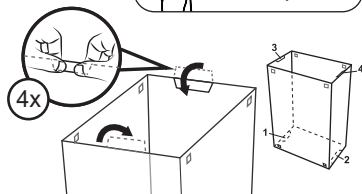
Stand up & remove the 8 square flakes

II



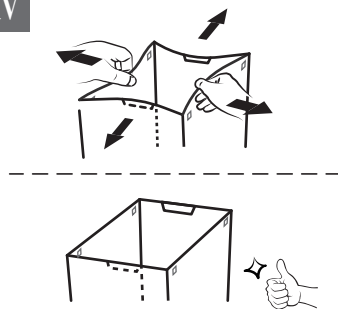
Please remove all the protective films

III



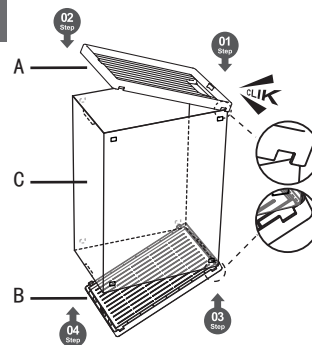
Fold the 4 slots inwards & press for 2 seconds

IV



If the body is not rectangular enough, please adjust the body as above directions show

V

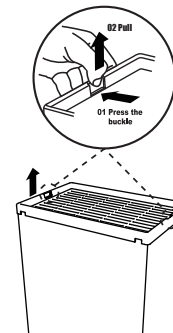


Please pay attention to the consistency of installation direction of the front door and the back frame

VI

Easy to disassemble

Just disassemble with force along the direction of arrow



Maintenance Guide:

- If stains are present on the surface, wipe clean with a damp cloth and air dry for 10 minutes.
- Avoid scratching the surface of the product with sharp objects.
- Long term exposure to the sun will deteriorate your product.
- During installation, be careful of sharp objects that may braze your skin.

Usage scenarios



Add:2080 S Cucamonga Ave, Ontario, CA 91761

Email: service@sundaleoutdoor.com

Tel:(808)431-8028