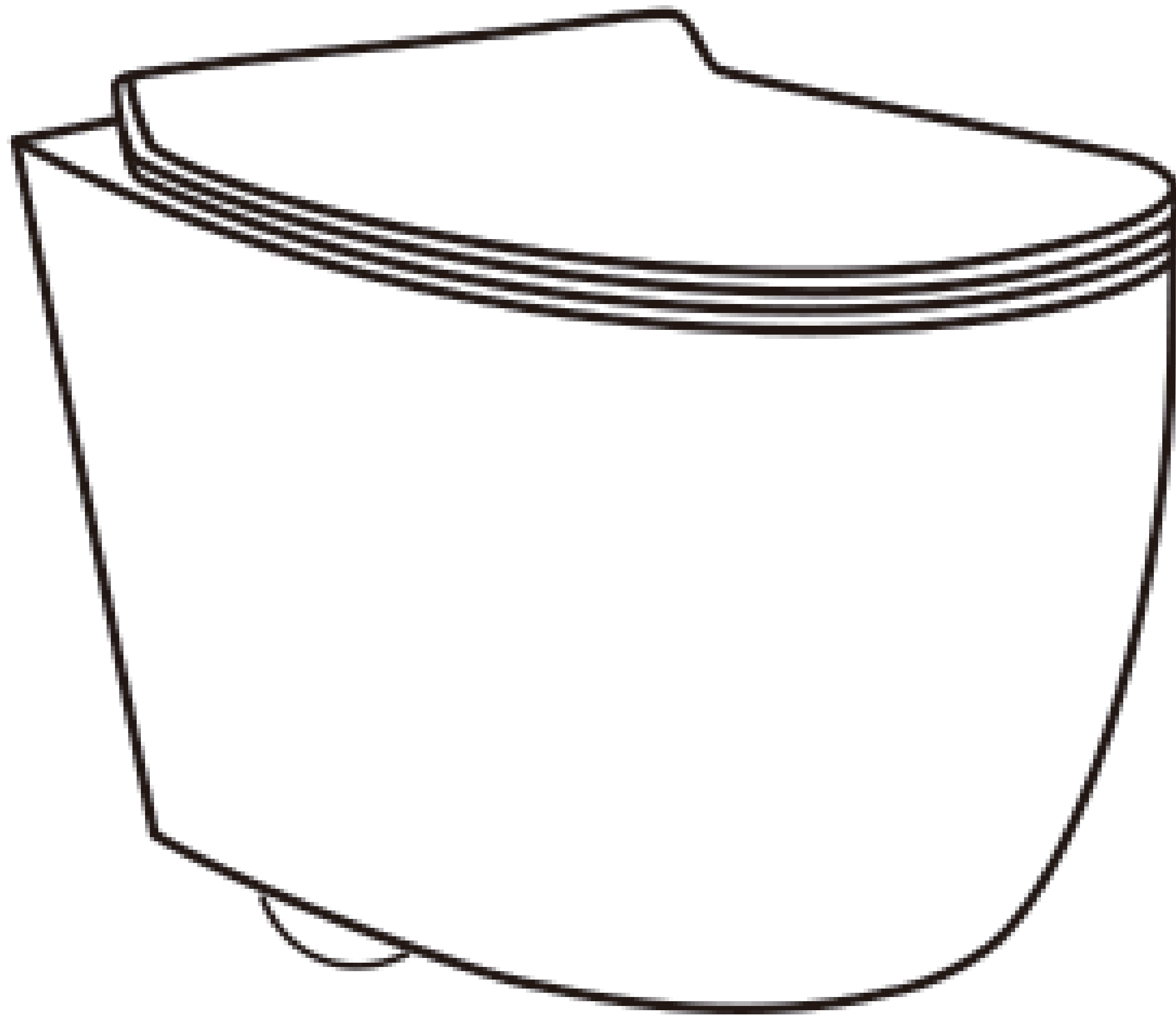


INSTALLATION INSTRUCTIONS

DeerValley®

Wall-Hung Toilet



NOTE: Drawings may not exactly define contour of the product.



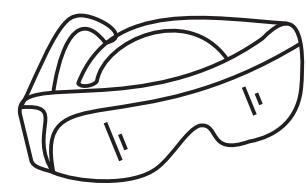
Prior to Installation:

- Inspect toilet to ensure no damages have occurred during shipping.
- Observe all plumbing and building codes in accordance with your state and local requirements.
- All dimensions are nominal! Be sure to measure your toilet prior to installation.
- The step-by-step guidelines in the installation instructions are a general reference. Should there be any discrepancies, DeerValley cannot be held liable.
- It is recommended to install all DeerValley products by hiring a licensed professional.
- Read installation and maintenance instructions thoroughly before installing.
- Be sure to use proper tools and always wear proper personal safety accessories for your protection.
- Two people are recommended to handle and install this product as it is fragile.

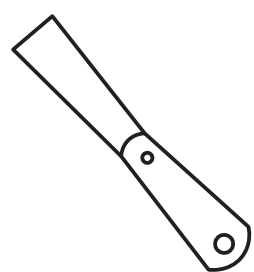
**If you have any questions or concerns
please contact us:**

(+1) 312-626-9466
service@deervalleybath.com

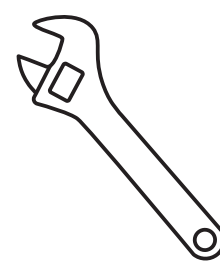
SUGGESTED TOOLS AND MATERIALS



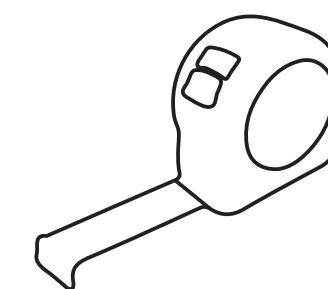
Safety
Glasses



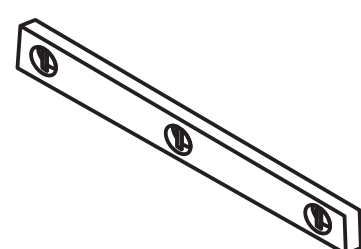
Putty
Knife



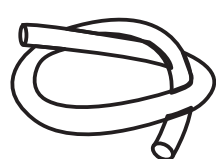
Wrench



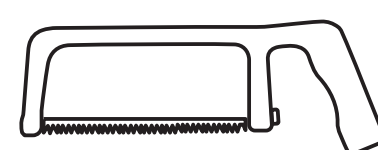
Tape
Measure



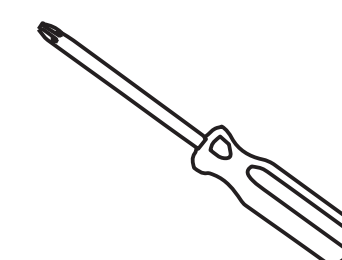
Level



Flexible
Supply



Hacksaw

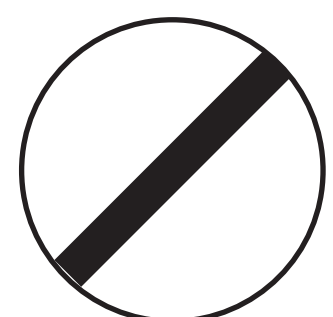


Screwdriver

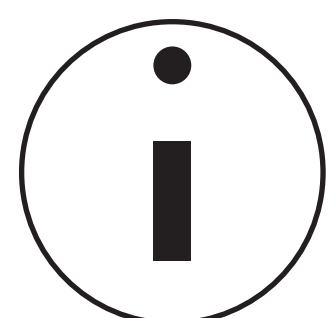
The step-by-step guidelines in the installation instructions area general reference for installing a DeerValley Wall Hung Toilet. Should there be any discrepancies, DeerValley cannot be held liable. It is recommended to install all DeerValley Products by hiring a licensed professional.



1. Read the complete instruction manual before beginning installation



2. Confirm that your model will fit in intended location and plumbing fixtures are located where legally required before beginning installation.



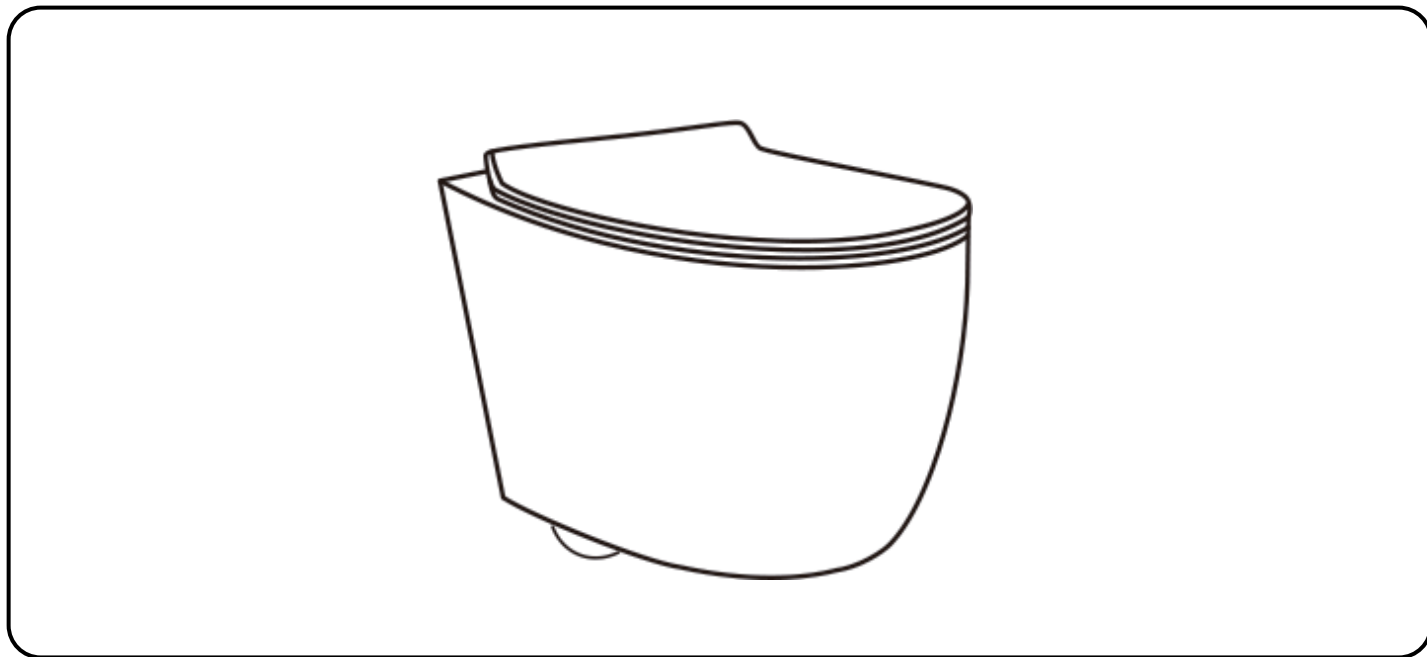
3. Not all drawings in this manual are drawn to scale. Please refer to the model chart.

4. Two people are recommended to install and move this product.

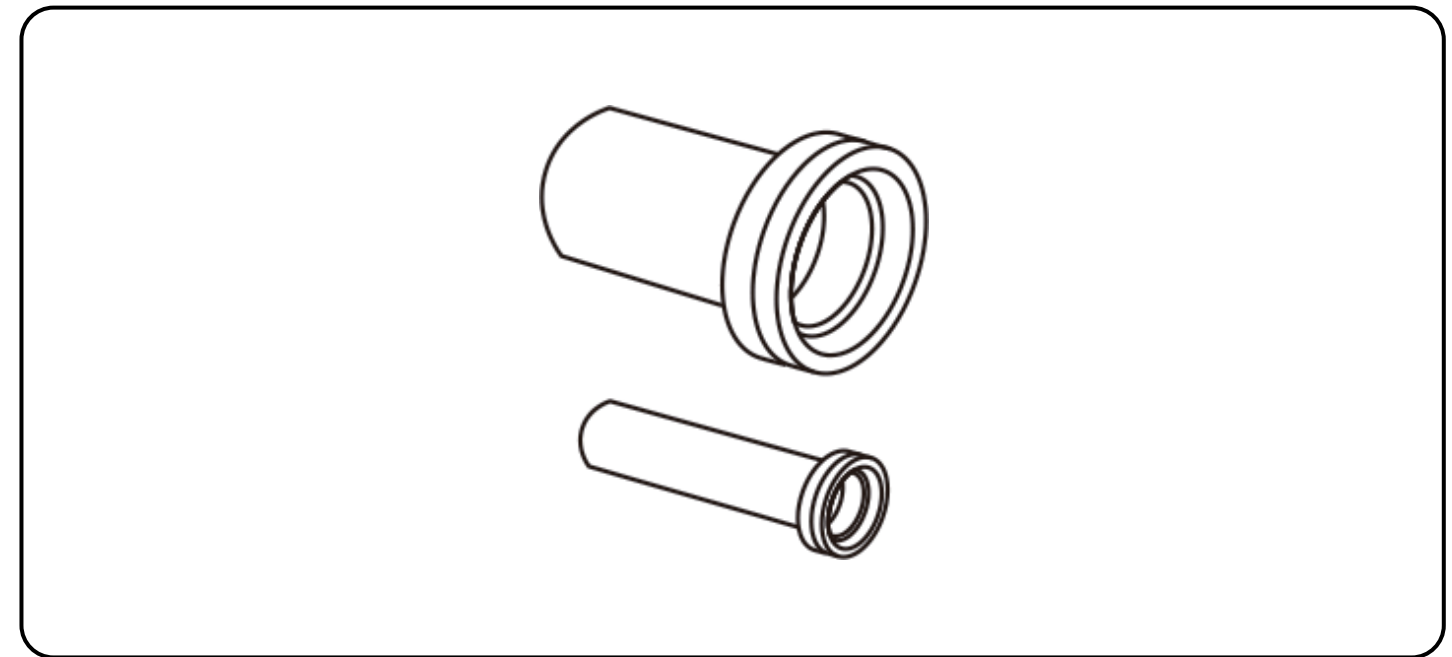
5. Product is FRAGILE! To avoid breakage and possible injury, handle with care.

NOTE: Specialized tools may be necessary to install DeerValley Wall Hung Toilet.

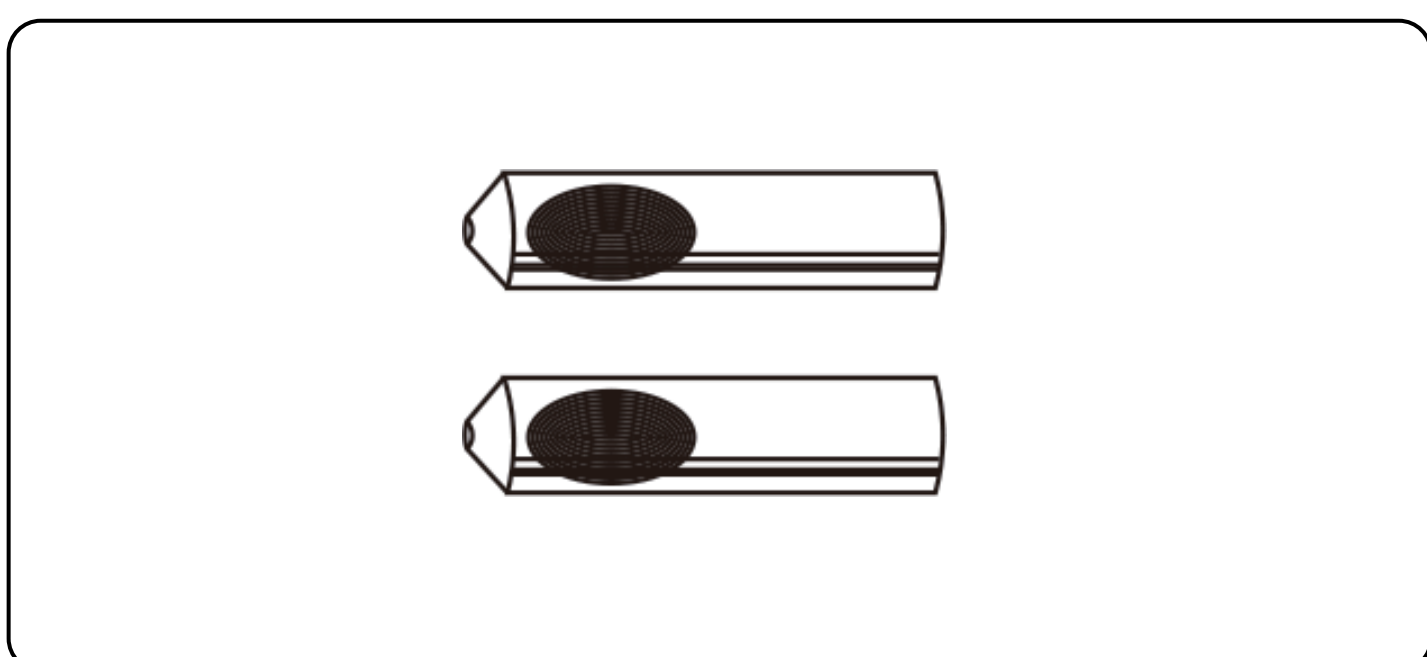
Parts list



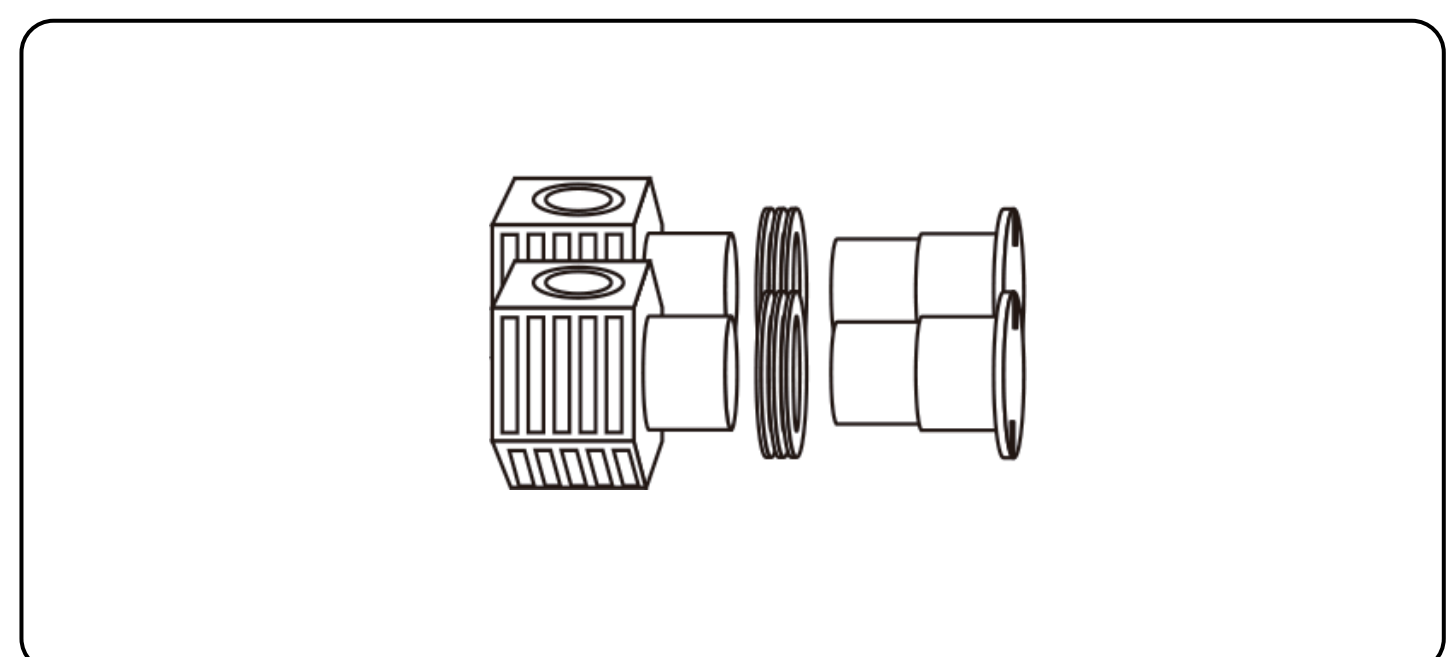
Wall-Hung
Toilet



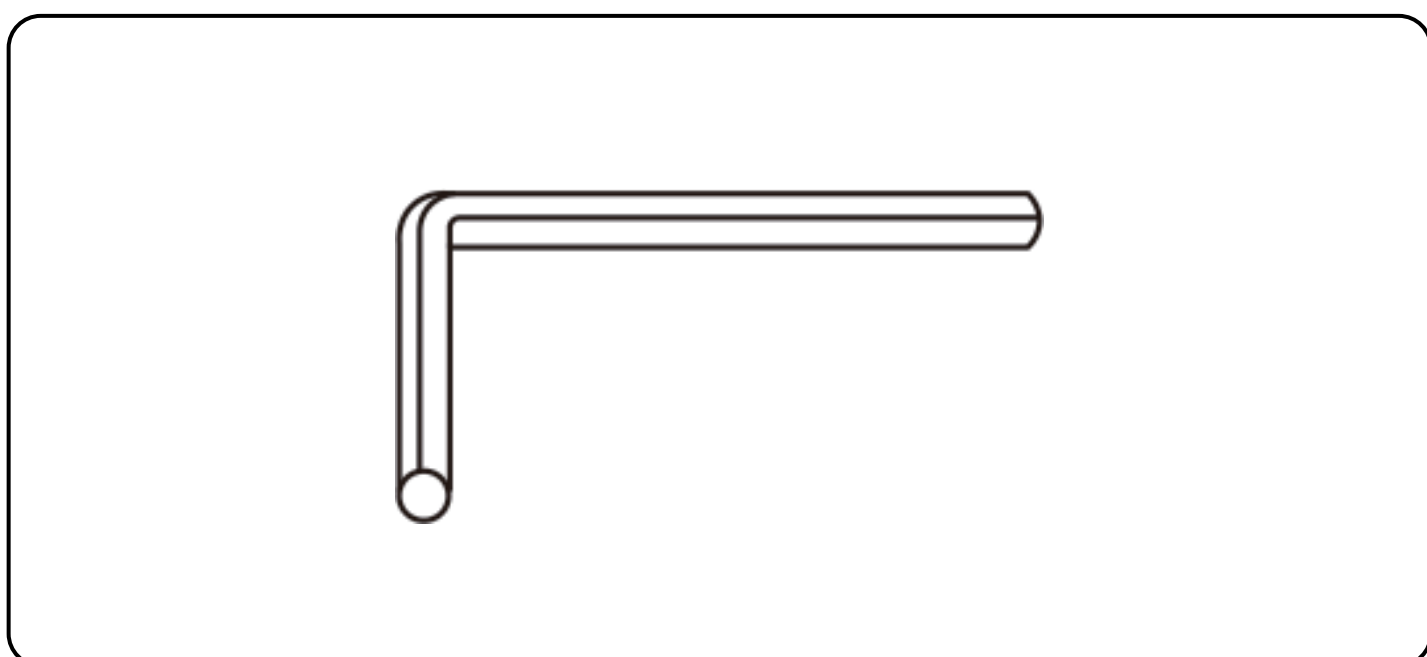
Outlet Pipe & Inlet Pipe
Toilet (Included with tank carrier
system- sold separately)



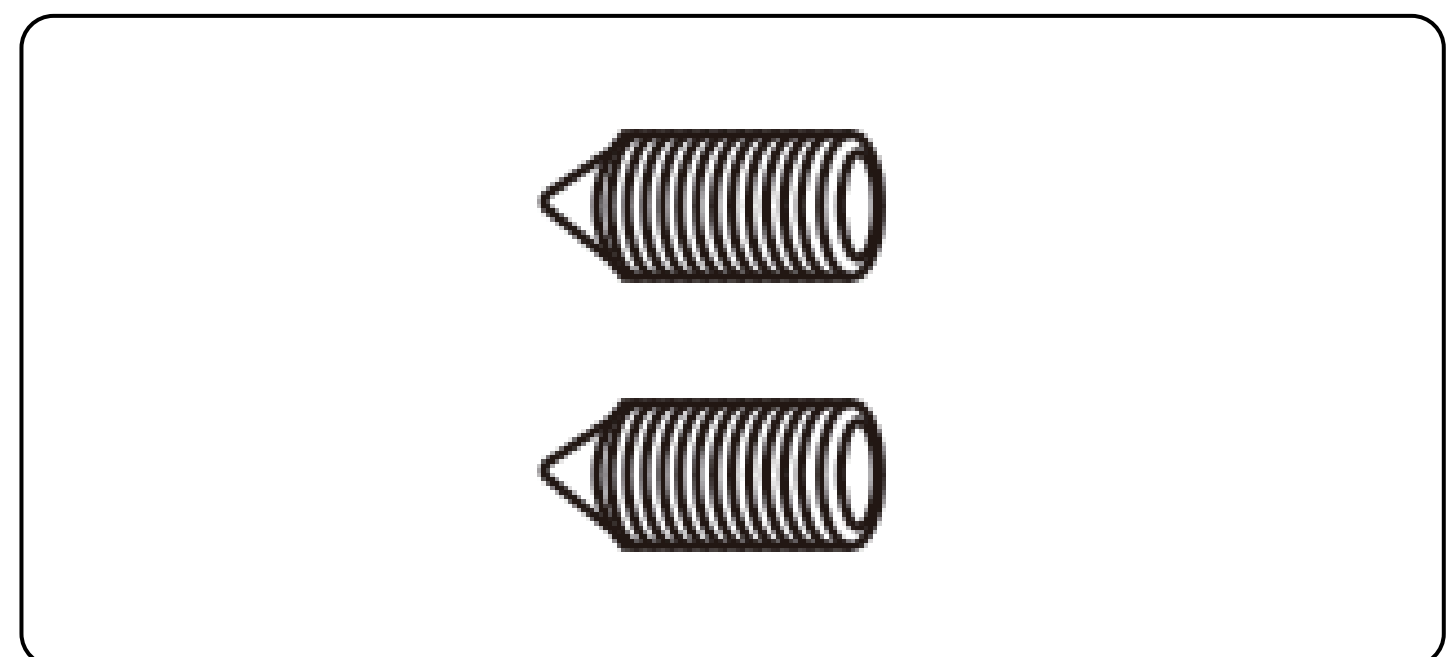
Notched
Pegs



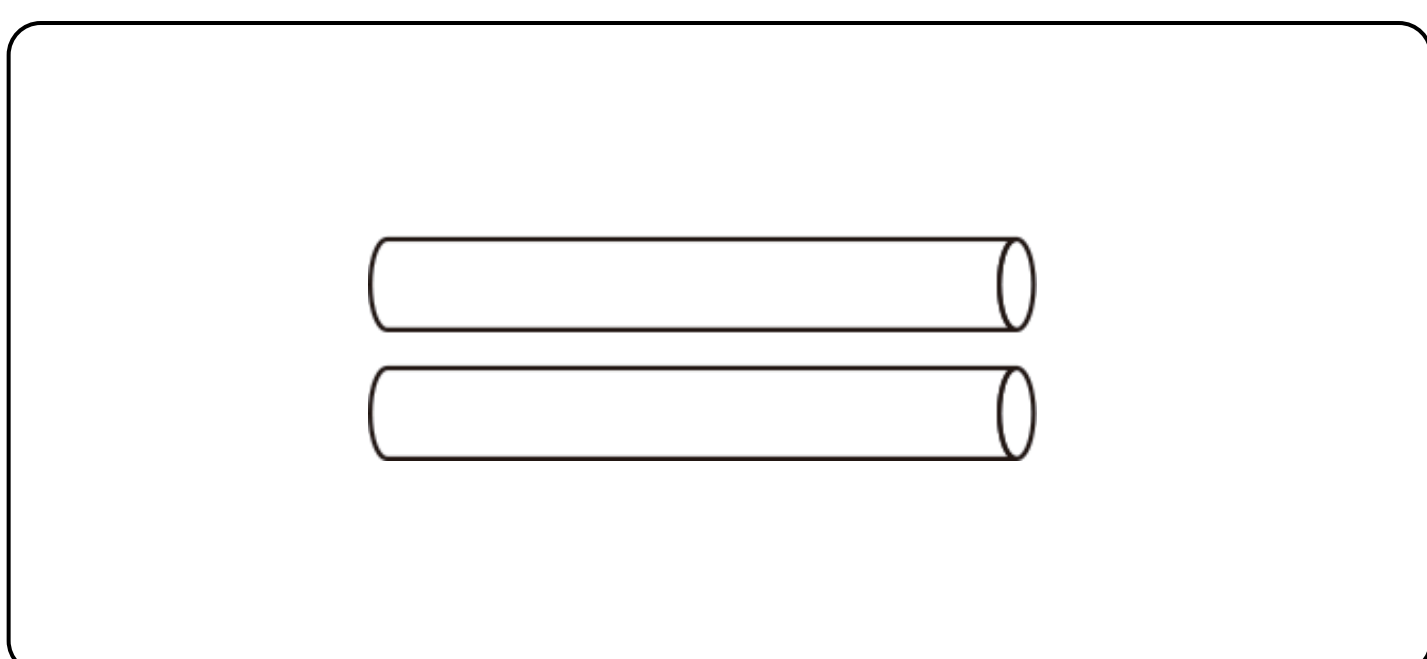
Retaining
Bolts



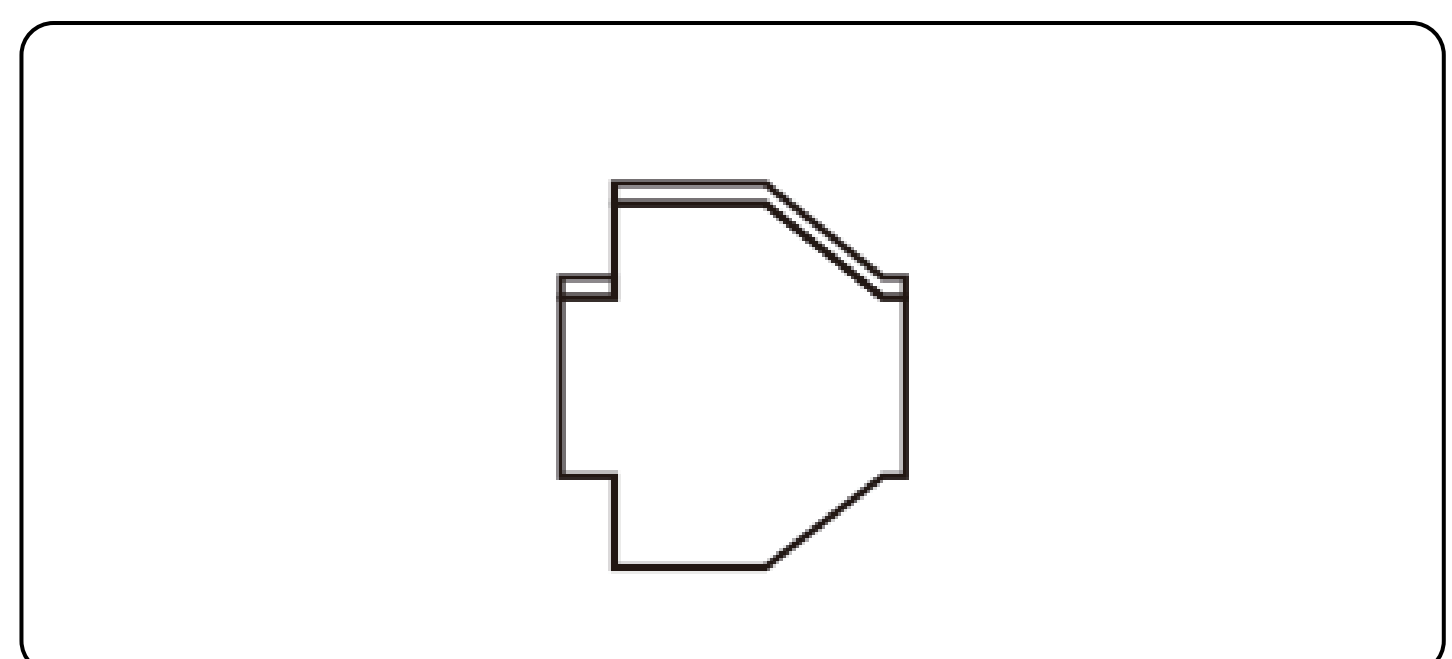
Allen
Wrench



Set
Screws



Set Screw
Installation Retaining



Bolt Key
Tubes

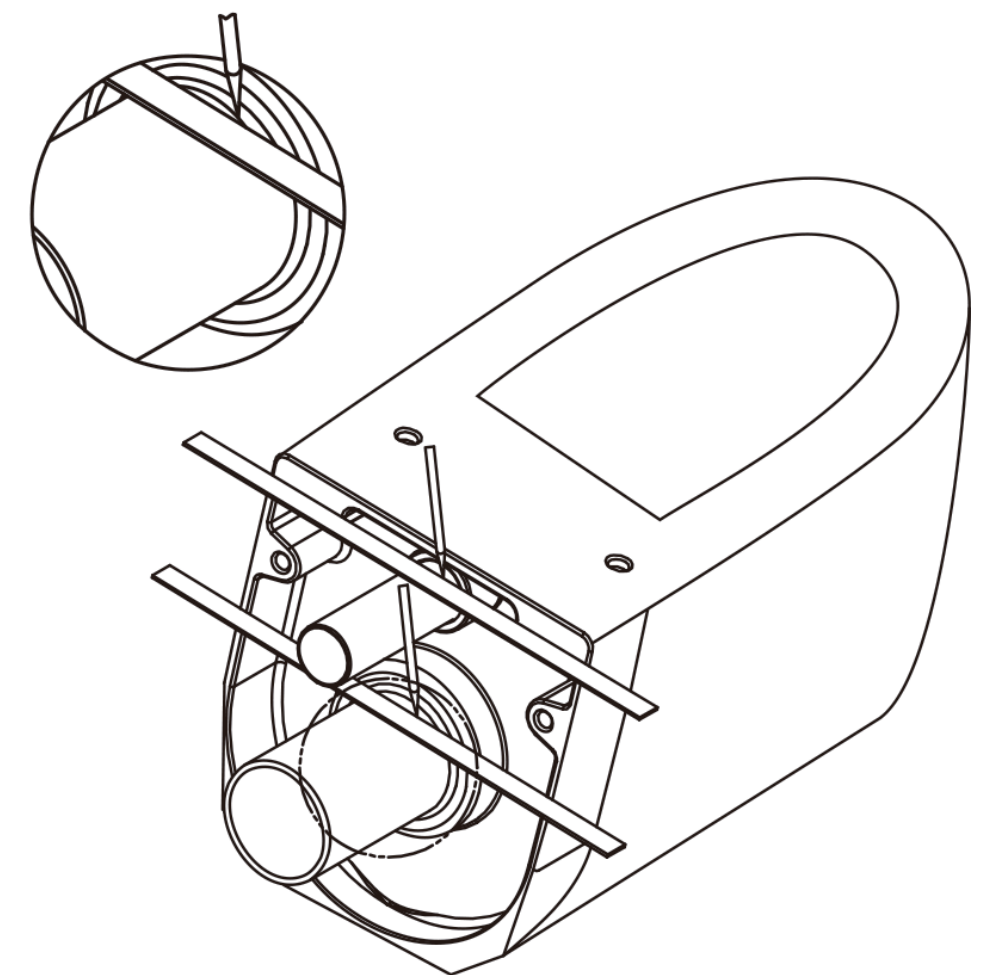
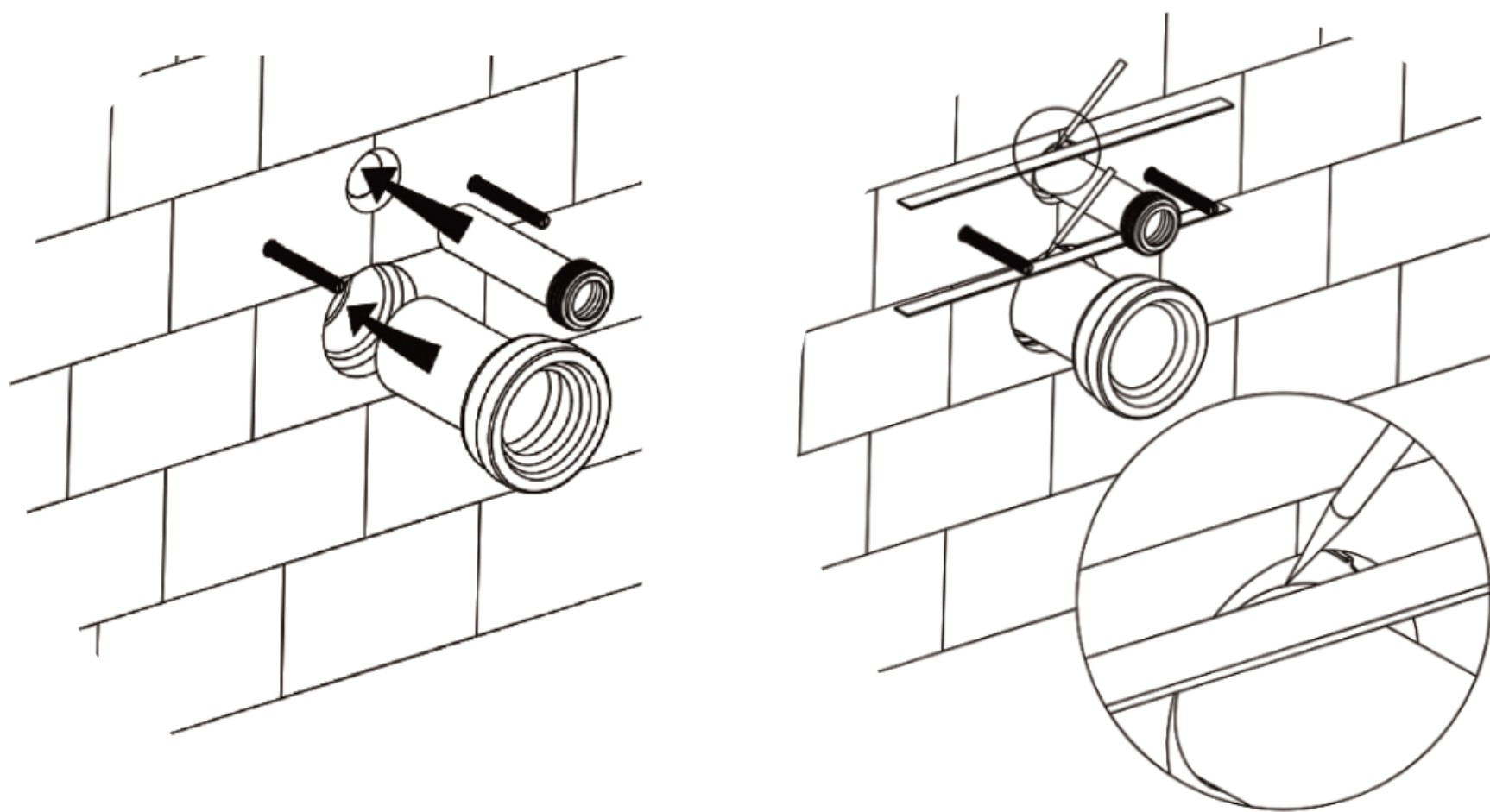
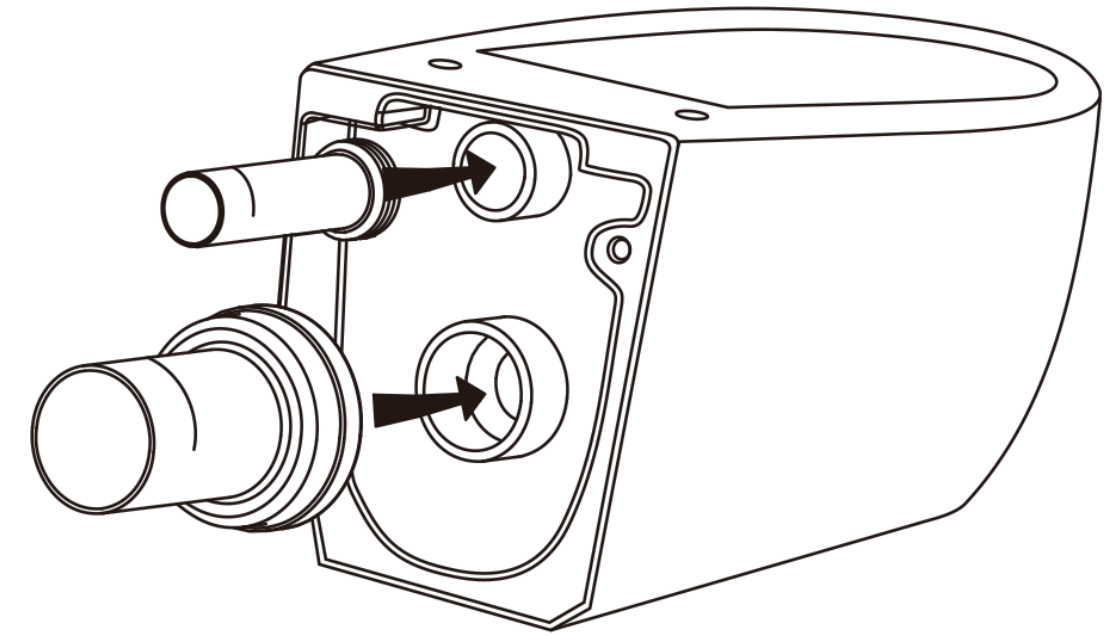
NOTE: Specialized tools may be necessary to install DeerValley Wall Hung Toilet.

1. Install Tank Carrier System

- Before toilet bowl installation, a wood frame and a commercial or residential tank system is required.
- The tank needs to be purchased separately, or is included with certain models.

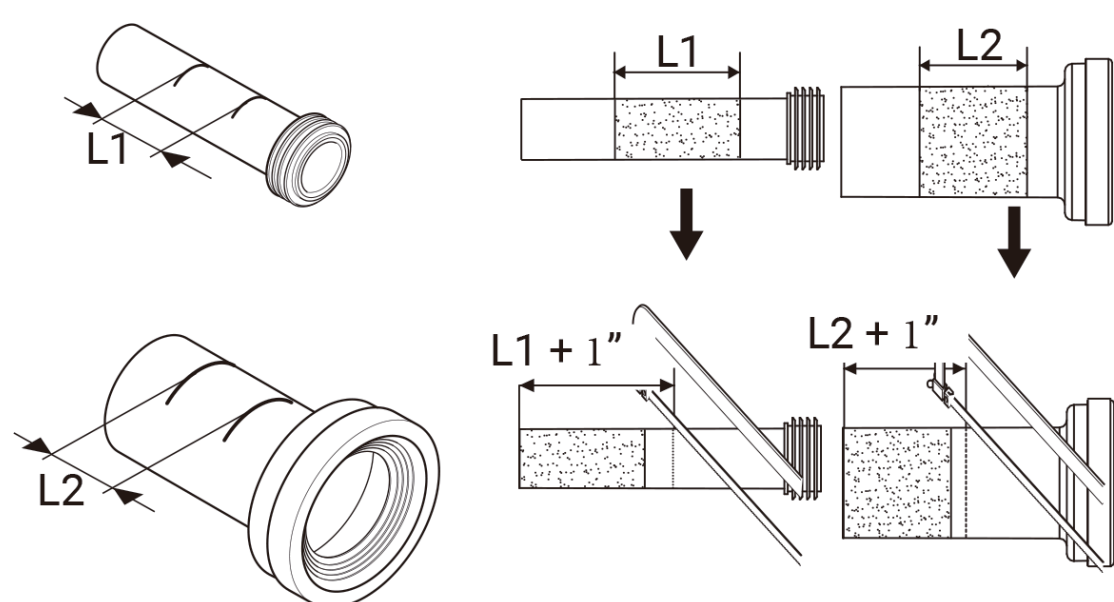
2. Dry Fit Outlet Pipe and Inlet Pipe

- Fully insert the straight tube into the cistern flushing outlet.
- Then, connect the pipe to the discharge outlet.
- Draw a line on each pipe to mark the finished wall position, as shown below.



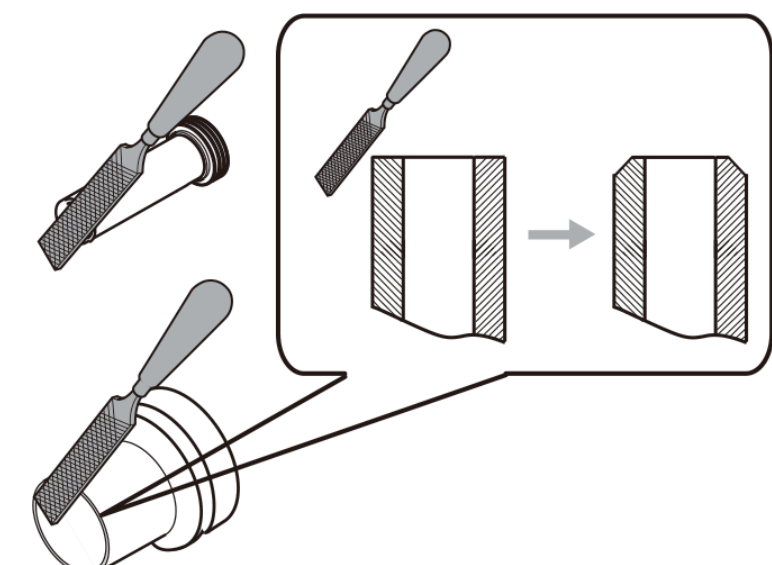
3. Determine Pipe Size

- Apply lubricant to rubber washers on the straight and connecting pipes.
- Insert both into the holes.
- Mark final wall position with lines, as shown below.



4. Cut Pipes

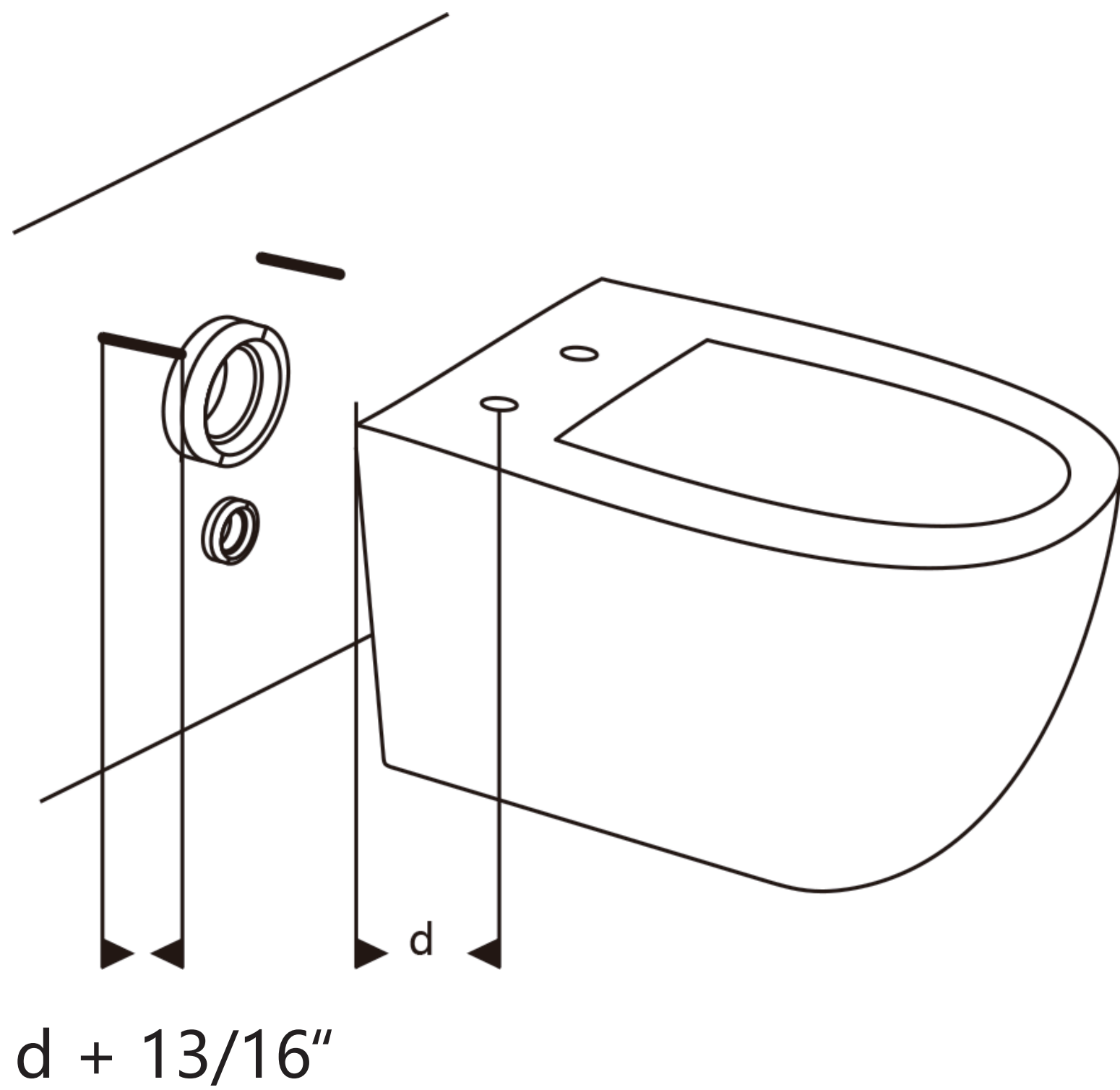
- Measure the distance between the two marked lines on each pipe (L1 for straight tube, L2 for connecting pipe).
- Deduct this distance from the plain end and cut the pipe accordingly.
- File the cut edges to remove burrs and bevel the ends slightly.



NOTE: Specialized tools may be necessary to install DeerValley Wall Hung Toilet.

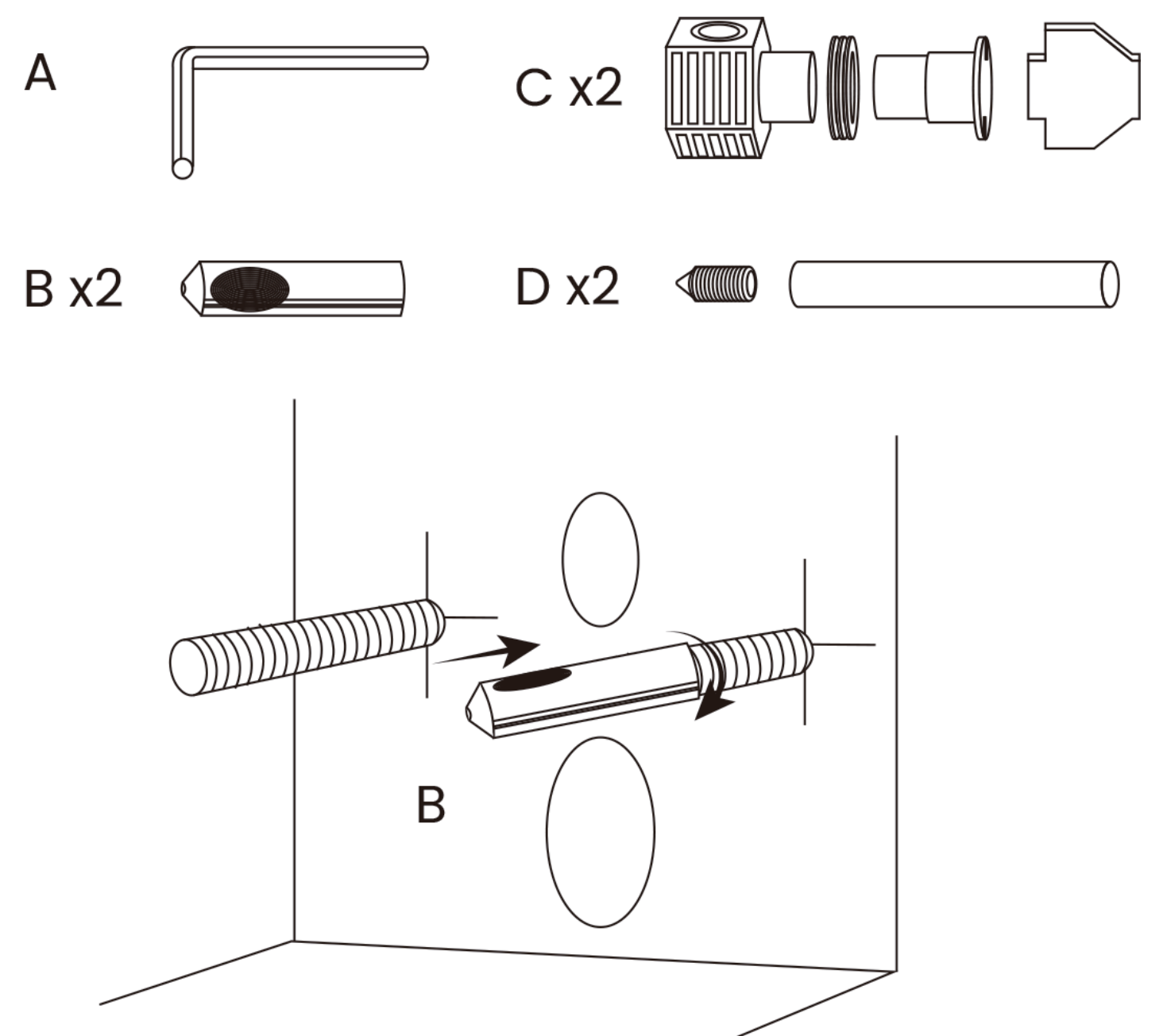
5. Adjust Bolt Length

- Adjust the connecting bolt to length $d + 13/16"$.



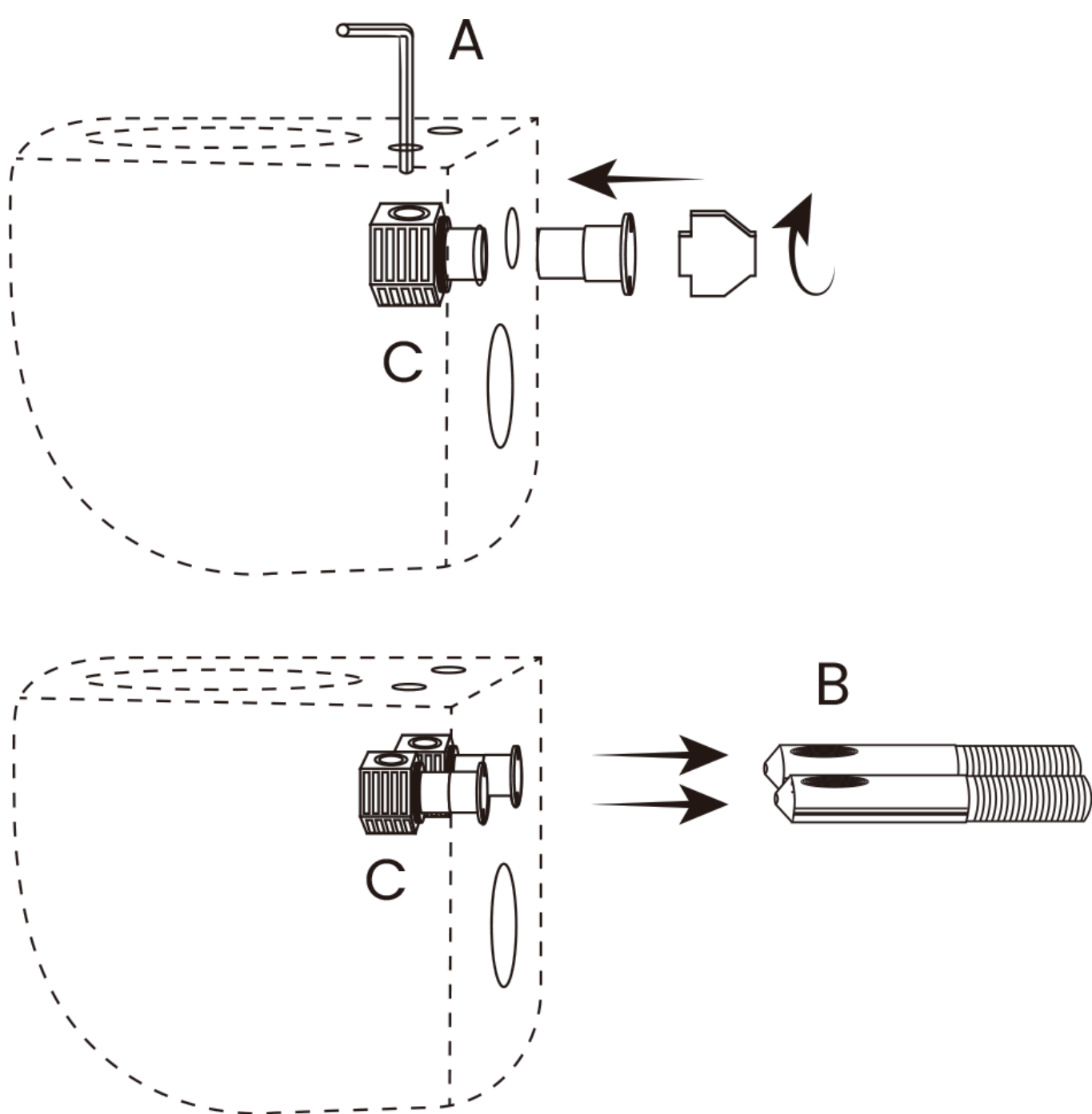
6. Anchor Bowl

- Hand-tighten the notched pegs (B) onto the mounting bolts with the notch facing up.



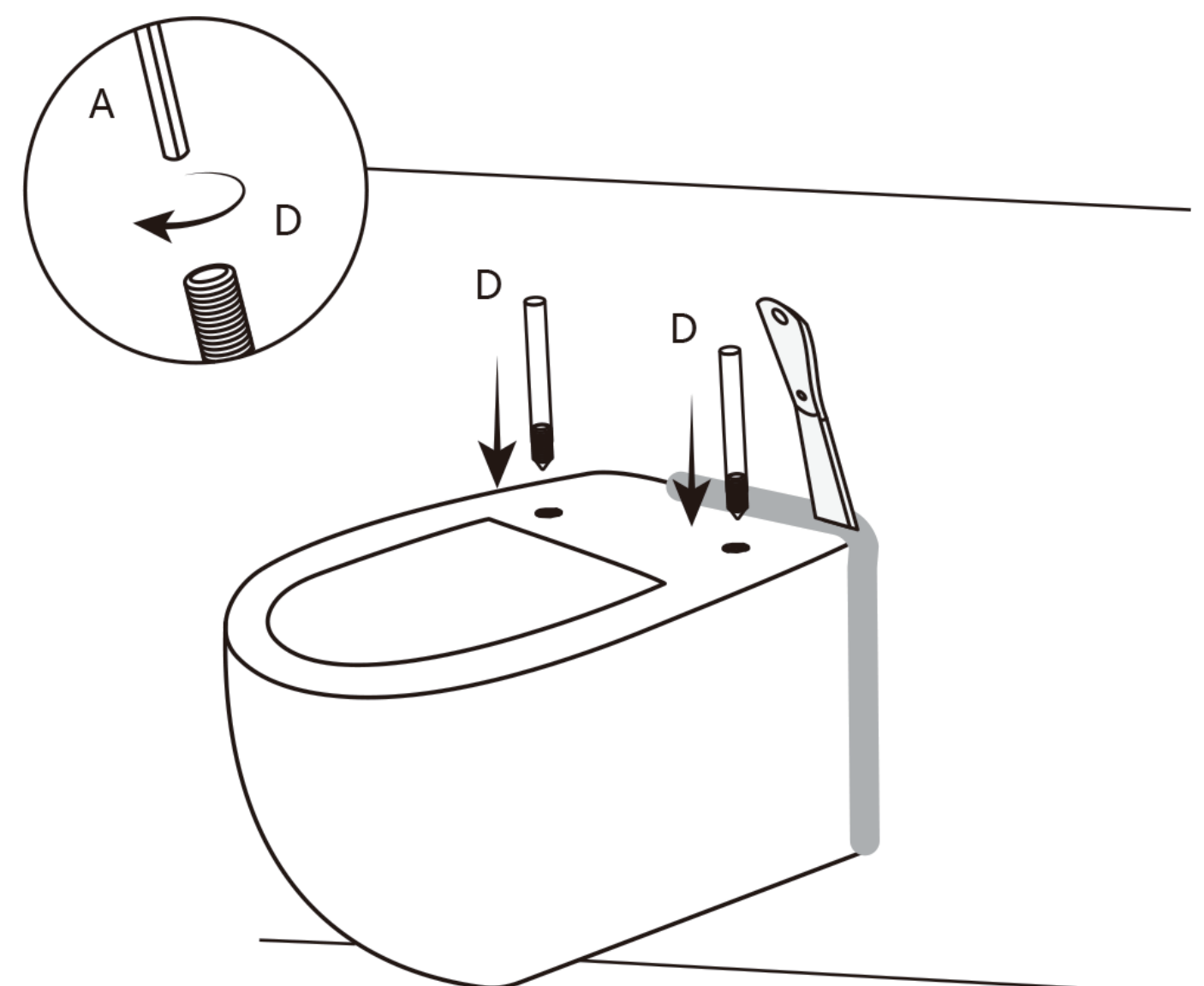
7. Attach Bowl

- Insert the retaining bolt (C) from inside the toilet bowl into the mounting hole.
- Use the bolt key to secure both components together. Hold bolt (C) with the Allen key (A) while tightening. Repeat this process on the other side.
- Apply lubricant to the joint surface, then place the bowl onto the mounting bolts.



8. Secure & Seal

- Insert the set screws (D) into the top of bolts (C) using the screw tubes. Tighten them with the Allen key (A).
- Seal around the base with cement or sealant.

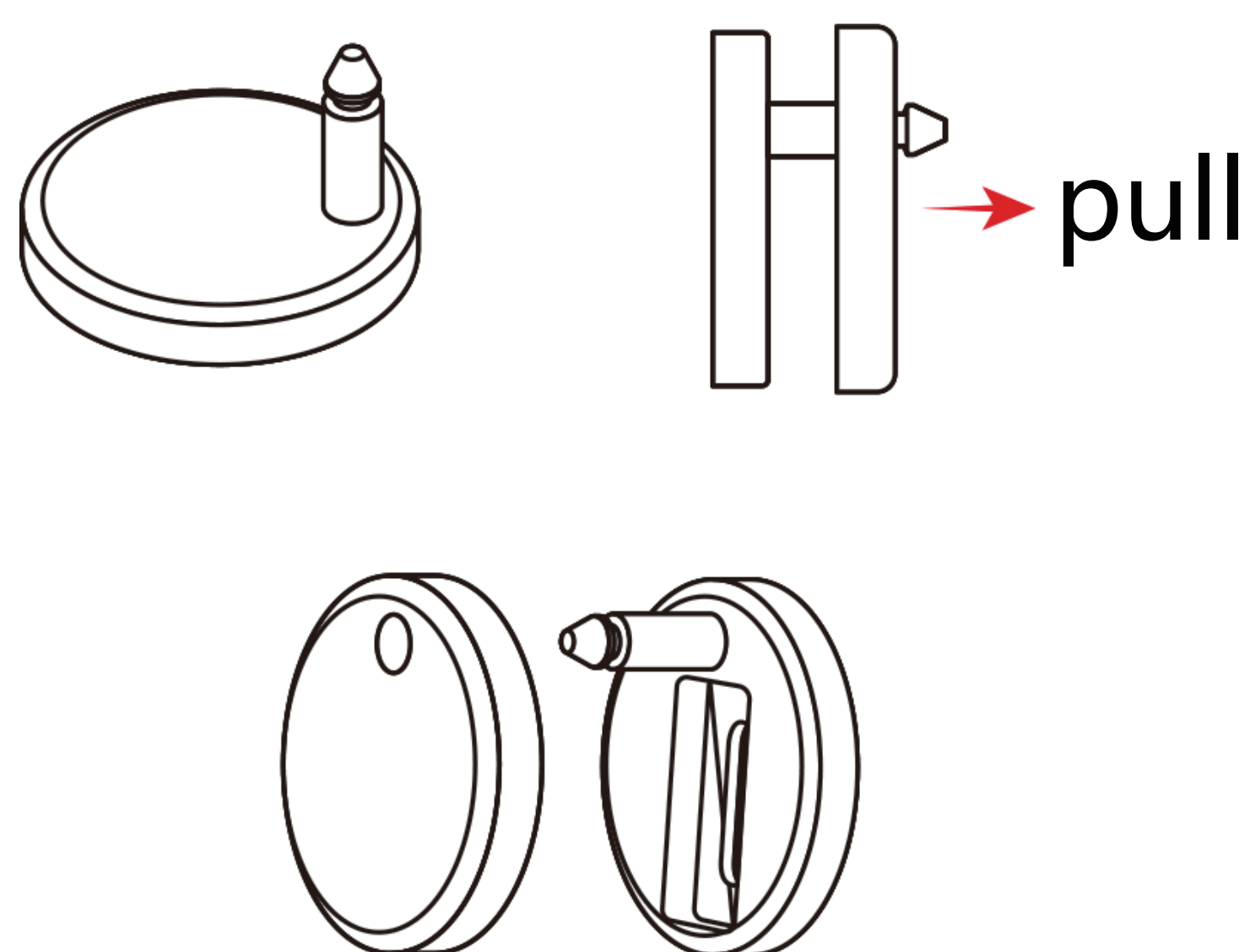


NOTE: Specialized tools may be necessary to install DeerValley Wall Hung Toilet.

Toilet Seat Installation

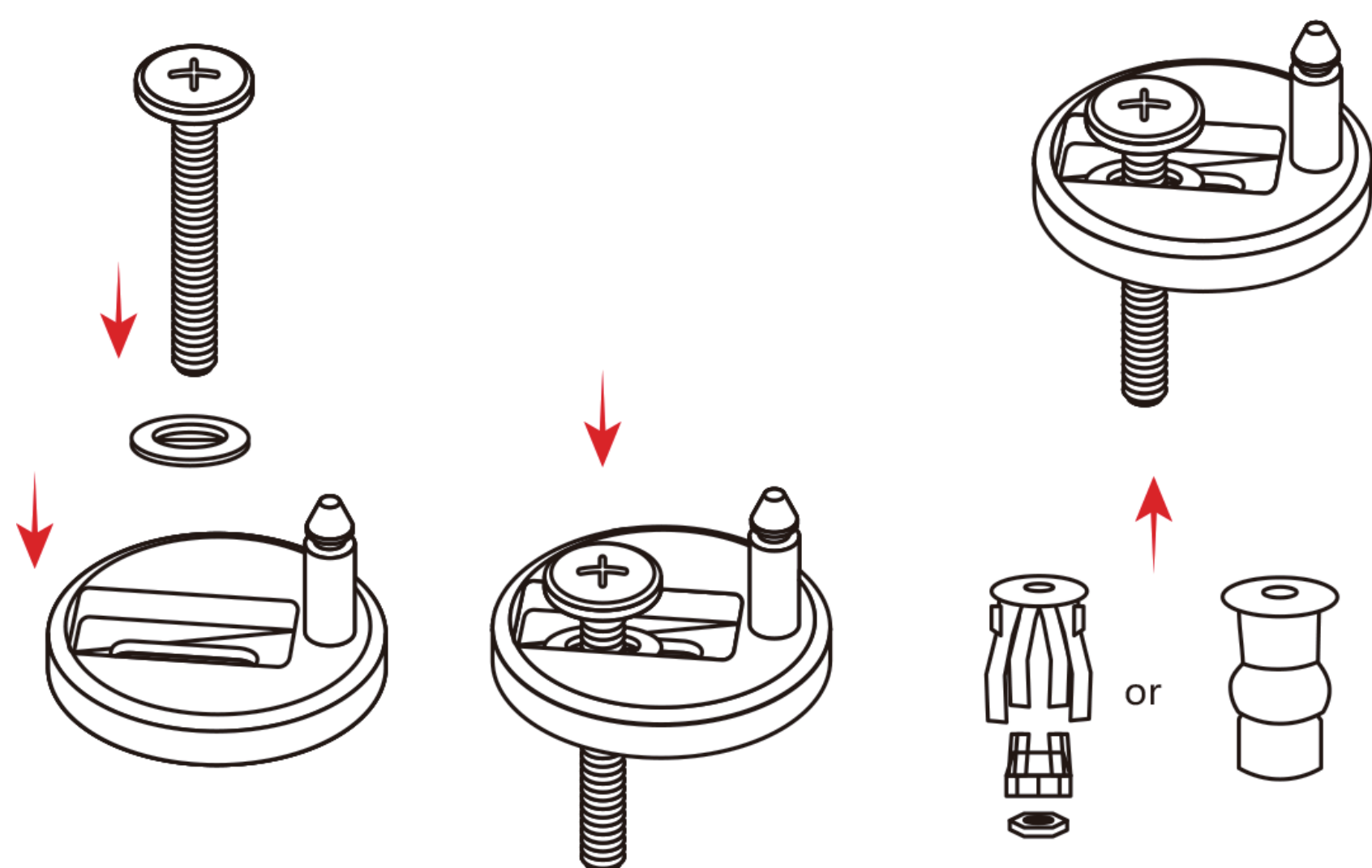
1. Disassemble

- Remove the cover caps and hinges.



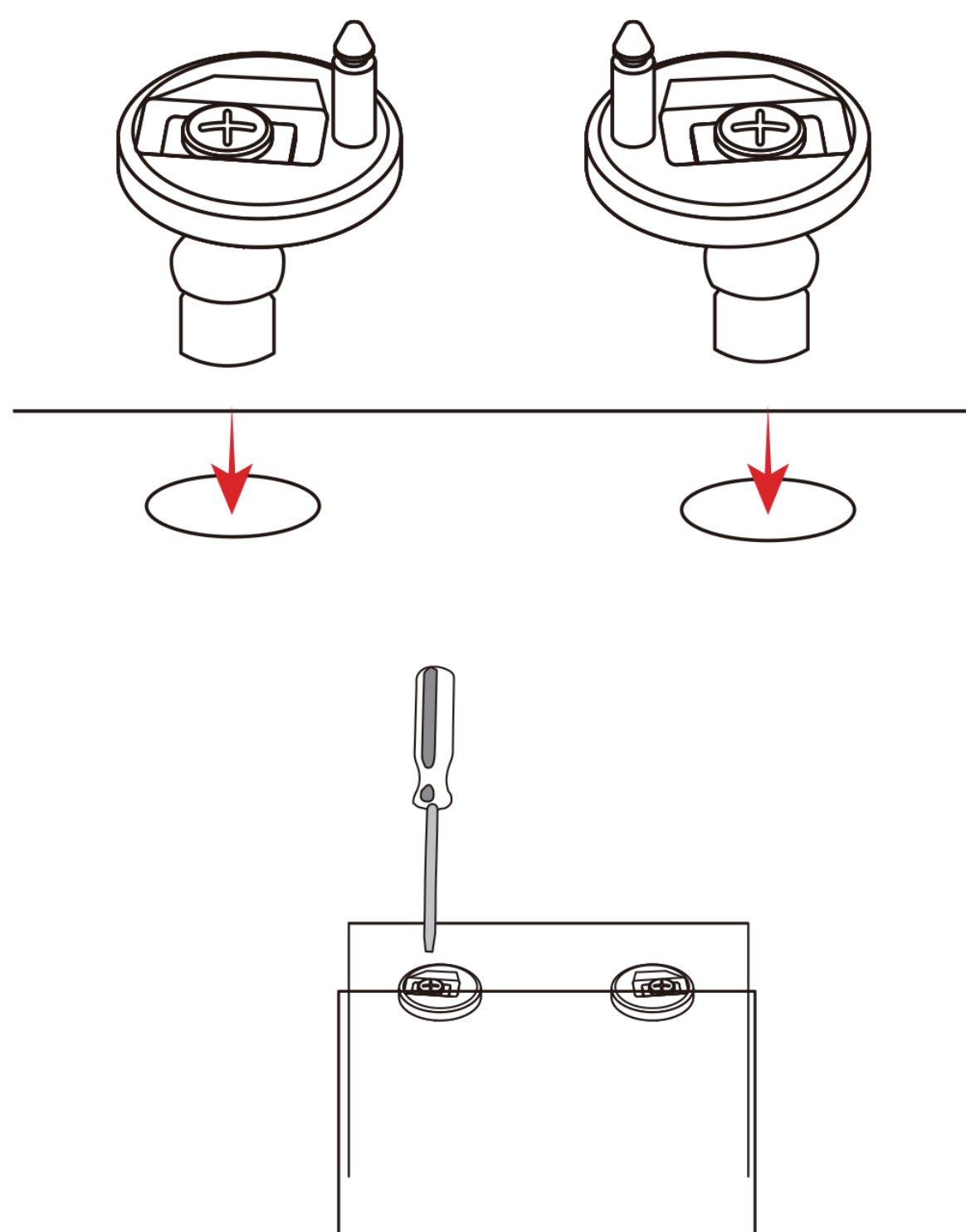
2. Assemble Hinges

- Insert the screw and nut into the hinge.
- Attach the blind hole fixing to the screw bottom.



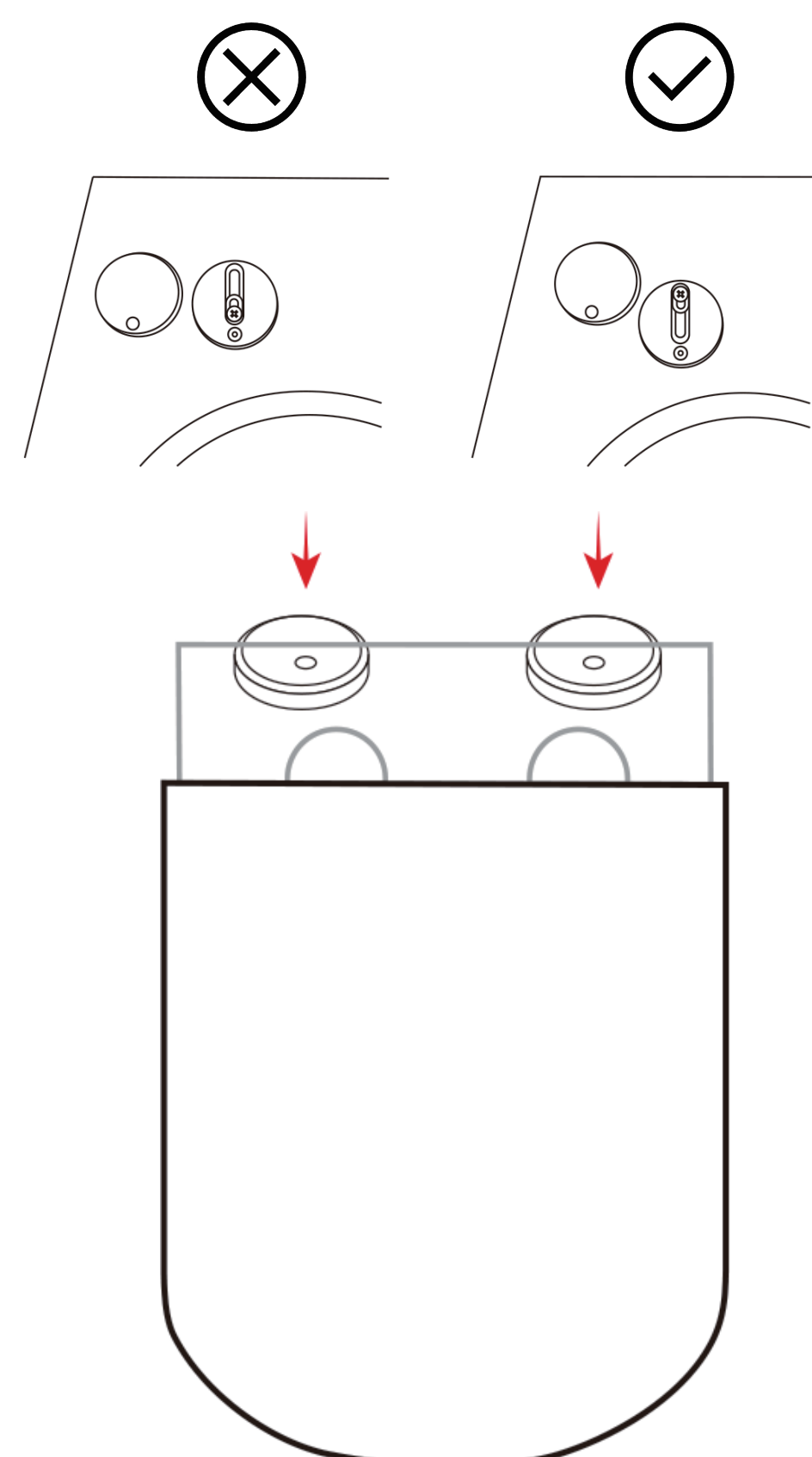
3. Install Hinges

- Insert the hinges (with fixings) into the toilet bowl holes.
- Lightly tighten with a screwdriver for later adjustment.



4. Adjust & Cover Hinges

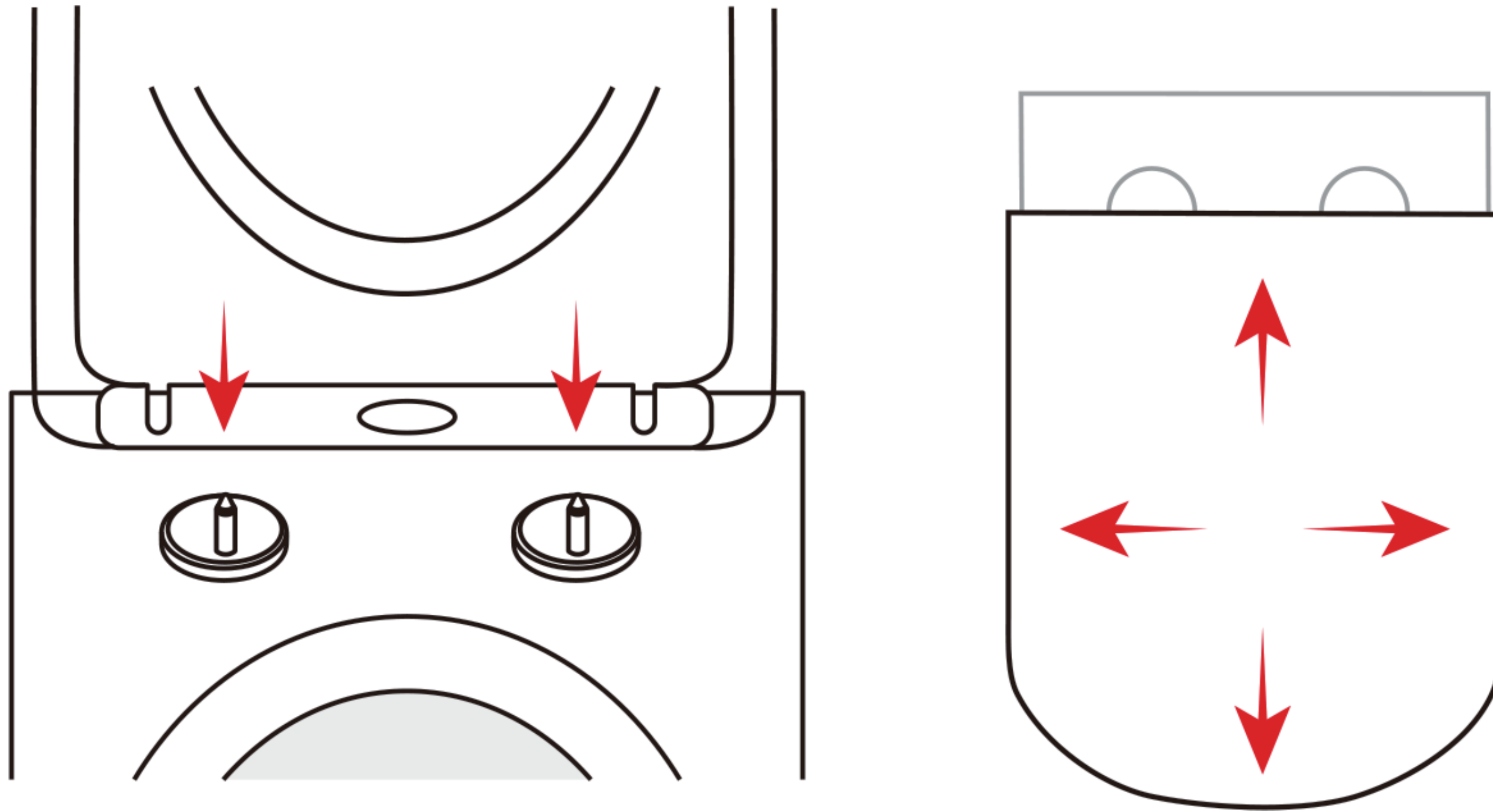
- Slide hinges fully forward for correct seat alignment.
- Place cover caps onto the hinges.



NOTE: Specialized tools may be necessary to install DeerValley Wall Hung Toilet.

5.Adjust & Attach Seat

- Align the seat with the hinges and tighten firmly.
- Snap the seat onto the secured hinges.
- Adjust the seat to align with the bowl.

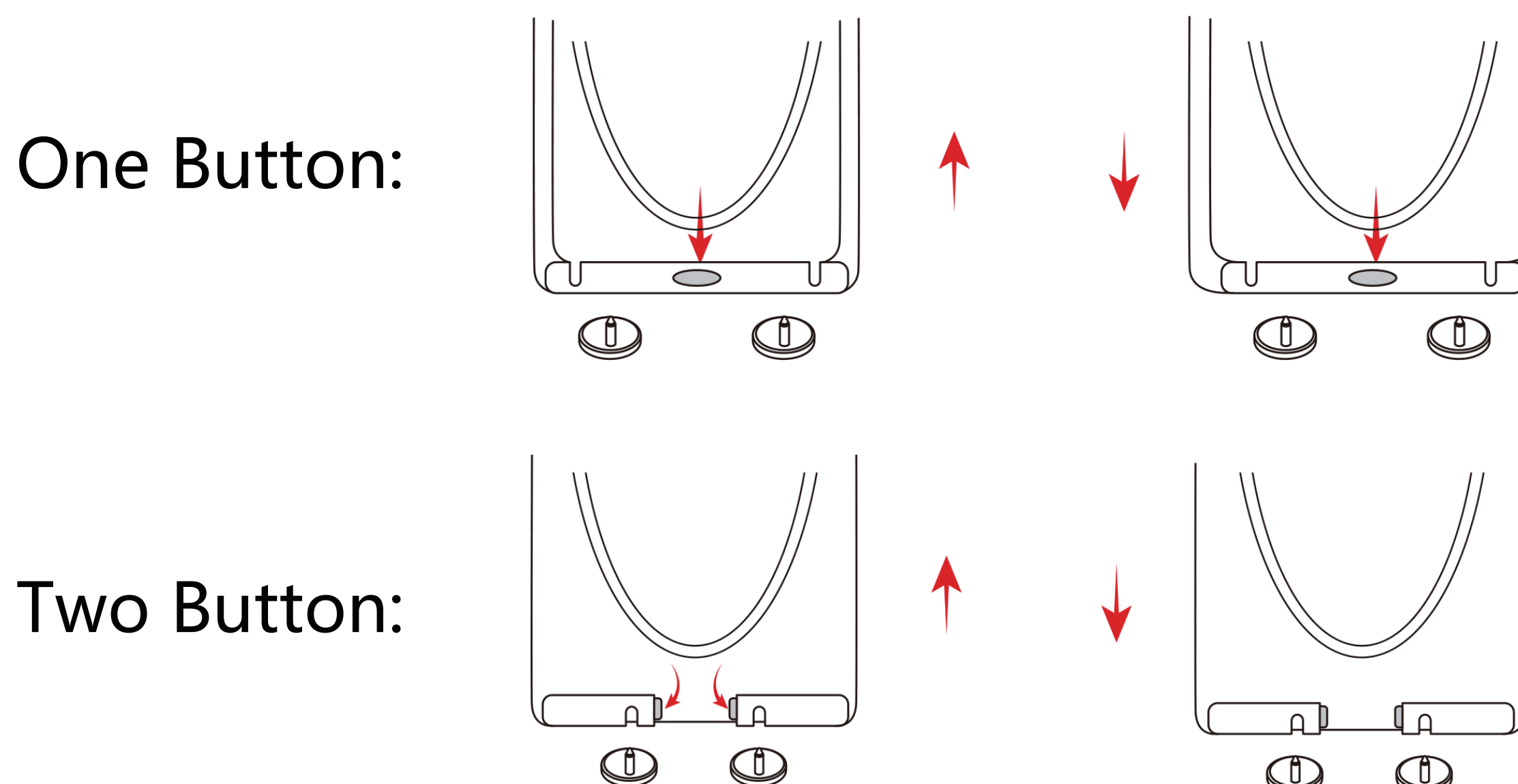


Toilet Seat Usage

- To Remove: Press the center button until you hear a "click", then pull straight up.
- To Reinstall: Align hinge posts with the seat's reference marks, then push down until you hear a "click".
- If you have purchased a different toilet lid or seat for replacement, please ensure it is compatible with this toilet model.

The general steps for removing the toilet seat are as follows:

Button Types:



NOTE: Specialized tools may be necessary to install DeerValley Wall Hung Toilet.

LIMITED WARRANTY COVERAGE

1-YEAR LIMITED WARRANTY

DeerValley products are made with quality materials and excellent craftsmanship to provide customers with a long-lasting product. If any defects in materials or craftsmanship are found under normal use within the first year of delivery, DeerValley will provide replacement parts at no charge or, at its option, replace any product or part of the product deemed defective under normal installation, use, service, and maintenance. This warranty applies only to the original purchaser. Proof of purchase will be required to process any claims. **SCRATCHES ARE NOT COVERED UNDER WARRANTY.**

The manufacturer warrants that this product will be free from manufacturing defects for the duration of the above-mentioned warranty period. Please retain a copy of the original invoice as proof of purchase.

DeerValley will, at its option, (1) repair or replace the defective part(s) or product(s) at no charge; (2) issue a refund for the original purchase price of the product(s) (valid within 30 days from the date of delivery); or (3) issue a credit to be applied toward the purchase of a new DeerValley product. Shipping/delivery charges may apply and are at DeerValley's sole discretion.

DeerValley recommends that installations be performed by a licensed, professional plumber. DeerValley will not be held responsible for any damage or product failure resulting from improper installation, misuse, or failure to hire a licensed professional. Additionally, DeerValley is not responsible for any removal or installation costs.

This limited warranty does not cover goods that have been subjected to accidents, negligence, improper installation, product abuse, product misuse, or the use of cleaners containing abrasives, alcohol, or other organic solvents. Such exclusions apply regardless of whether the actions were performed by a contractor, service company, or the purchaser.

DeerValley's responsibility under this limited warranty is limited solely to the replacement of parts and does not cover any other costs. DeerValley will not be responsible for labor charges or any damage incurred during installation, repair, or replacement, nor for any indirect, incidental, or consequential damages, losses, injuries, or costs of any kind related to this product. Except as required by law, this limited warranty replaces and excludes all other warranties, conditions, and guarantees, whether expressed or implied, statutory or otherwise, including but not limited to those regarding merchantability or fitness for a particular purpose.

RESPONSIBILITIES OF OTHERS

It is the responsibility of the installer or building contractor, acting on behalf of the user, to inspect the unit prior to installation. They are responsible for ensuring that the unit is free from defects or damage.

Notices are placed on and within the unit, as well as on the shipping carton, to inform the installer of their responsibility.

If a problem is identified, the unit must not be installed. DeerValley is not responsible for failures or damage that could have been identified, repaired, or prevented through proper inspection and testing prior to installation.

Damage occurring during transit is the responsibility of the carrier. The user or installer must open the crate and inspect the unit for damage upon delivery. If damage is discovered, it must be reported immediately to the seller and the carrier in writing, and an inspection must be requested. If the carrier fails to respond, the issue should be reported to both the seller and the carrier. Freight claims should be filed promptly thereafter.

LIMITATIONS AND EXCLUSIONS

This warranty does not cover negligence, misuse, abuse, improper installation, carelessness, accidents, hard water or mineral deposits, exposure to corrosive materials, misapplication, damages resulting from improper maintenance, alteration of the product, or failure to follow the care or installation instructions provided with your product. The warranty becomes void if the DeerValley product is altered or if repairs are attempted using unauthorized accessories or parts not provided by DeerValley.

DeerValley is not liable for the loss of use of its products, inconvenience, or any other incidental or consequential costs, expenses, or damages. Please note that some states do not allow the exclusion or limitation of incidental damages.

DISCLAIMER

Except as expressly stated, no warranties or obligations, whether express, implied, oral, or statutory, are provided. No dealer or other individual has the authority to make any warranties or representations regarding DeerValley or its products. DeerValley shall not be held responsible for any such unauthorized warranties or representations.

WARRANTY SERVICE

NOTE: When requesting warranty service, please ensure you have the following:

- A copy of the original invoice
- Date of installation
- Description and pictures of the defect
- Model number or product description

To obtain warranty service or replacement parts, contact DeerValley Customer Service. DeerValley will determine whether to repair or replace the product, issue a refund, or provide a credit.