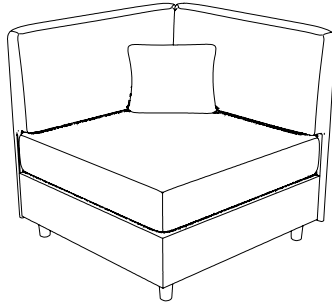
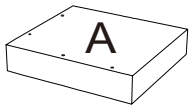


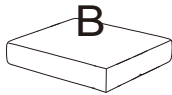
# ASSEMBLY INSTRUCTION



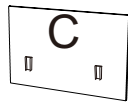
## PARTS LIST



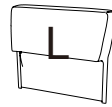
x1



x1



x2



x1



x1



x1



6.5cm\*5.5cm\*14cm

1

x4

2

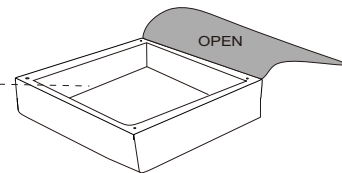
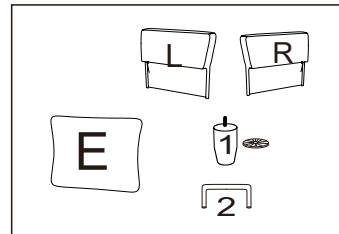


x2

Please allow at least 24 hours for the cushions to recover to its natural state after removing from the package.

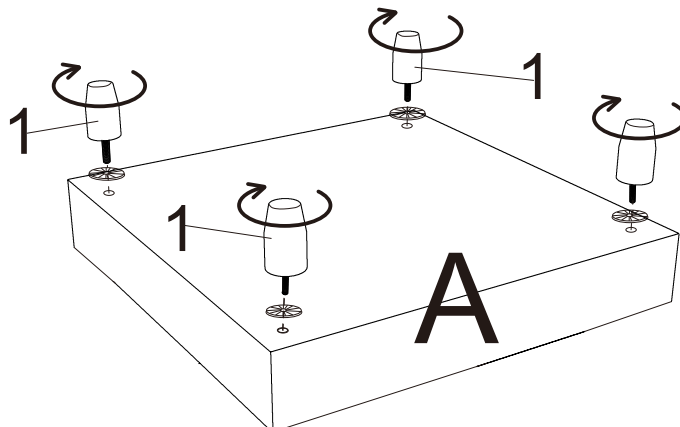
After removing the cushion from the compress bag, please allow air to flow through the cushion for few days.

You can try to fluff cushion by push in and push out on all four sides of the cushion. Hitting the top/front of the cushion with your hand to fluff them after installation.

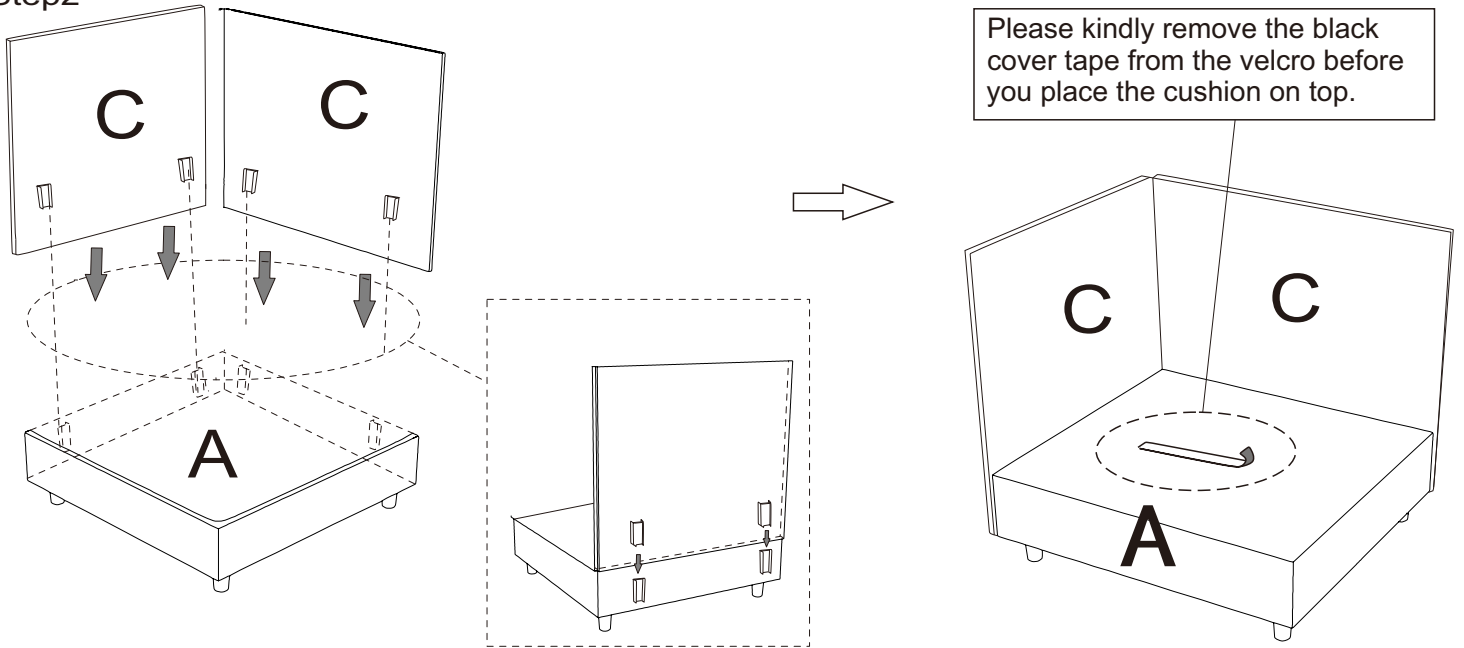


## ASSEMBLY INSTRUCTION

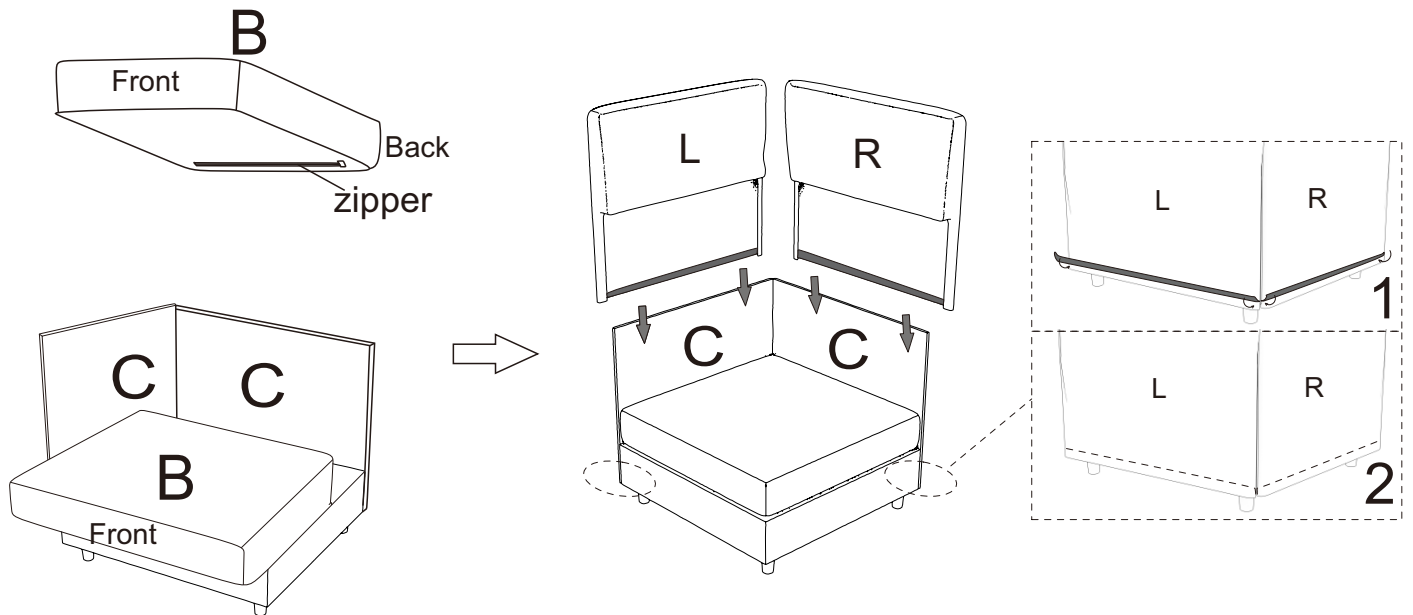
Step1



Step2



Step3



Step4

