

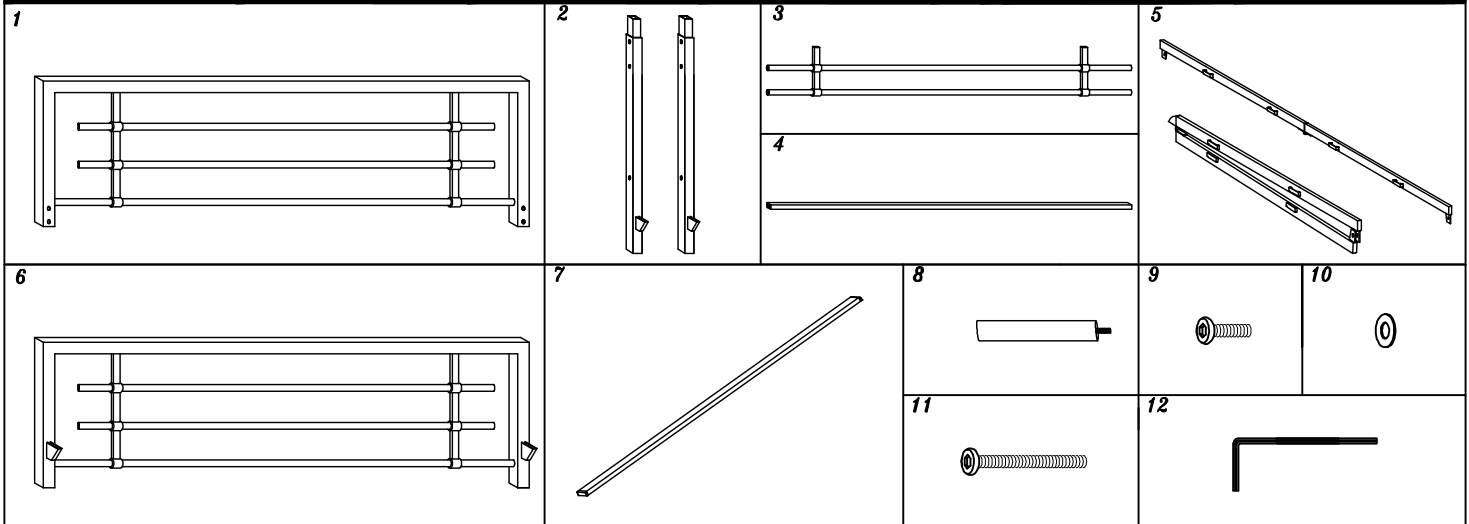
Parts List For Colton Snap Bed

BED CARTON

- | | |
|-----------------------|-----------------------|
| (1) HEADBOARD PANEL-1 | (6) FOOTBOARD PANEL-1 |
| (2) EXTENSION LEG-2 | (7) CROSS RAILS-4 |
| (3) PILLOW BAR-1 | (8) SUPPORT LEGS-6 |
| (4) STRETCHER BAR-1 | |
| (5) SIDE RAILS-2 | |

HARDWARE BAG (BLACK FINISH)

- | |
|--|
| (9) 1/4-20 X 1/2" FLAT ALLEN HEAD SCREW-4 |
| (10) 1/4" ID X 5/8" OD FLAT METAL WASHER-4 |
| (11) 1/4-20 X 2 1/4" FLAT ALLEN HEAD SCREW-6 |
| (12) 4MM ALLEN WRENCH-1 |

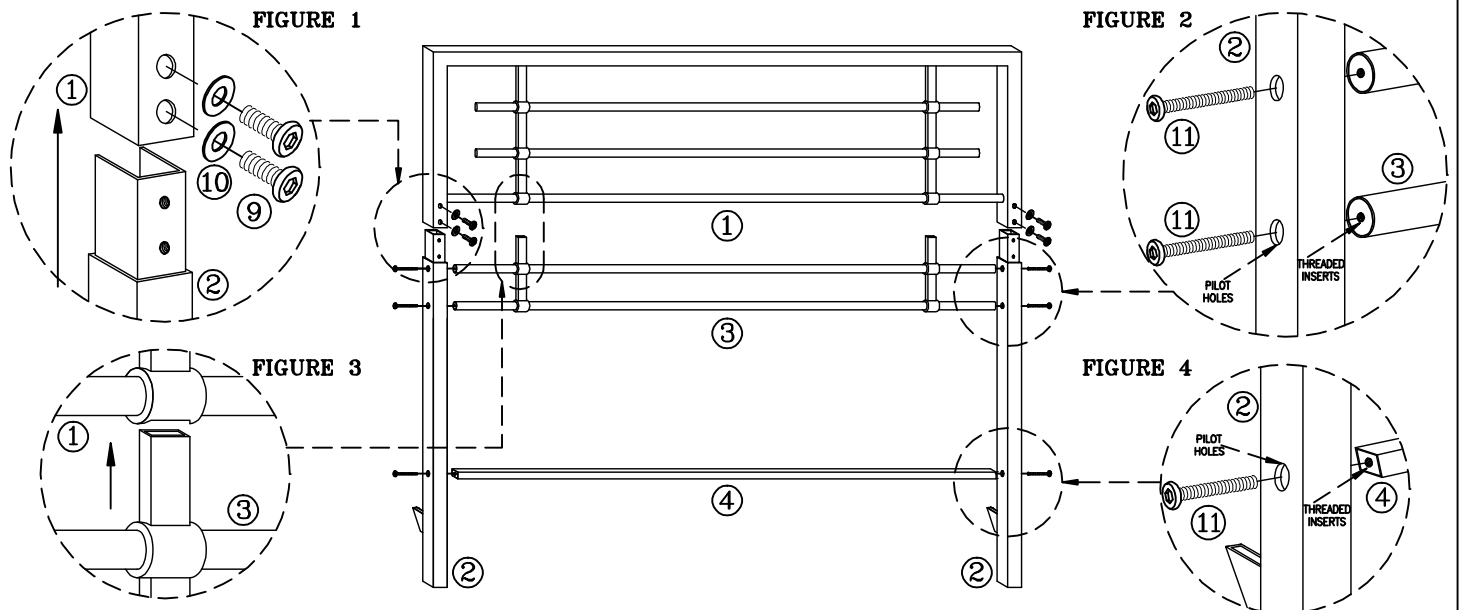


SAVE ALL PACKAGING MATERIALS UNTIL PRODUCT IS FULLY ASSEMBLED. HARDWARE AND SMALL PIECES MAY NOT BE SEEN AND COULD BE ACCIDENTALLY DISCARDED WITH PACKAGING MATERIALS.

Instruction Sheet

Step 1- Assembly of Headboard Panel .

- Align top reduction of extension leg (2) with bottom of headboard panel (1). SEE FIGURE 1
- Now Carefully insert extension Leg (2) into bottom of headboard panel (1).
- Secure extension leg (2) with screw (9) and flat metal washer (10). Use Allen wrench (12).
DO NOT TIGHTEN SCREWS COMPLETELY
- Place pillow bar (3) between extension leg (2) and under headboard panel (1) castings. SEE FIGURE 2 AND 3
- Align pilot holes on extension leg (2) with threaded inserts on Pillow bar (3) rails.
- Secure pillow bar (3) with screw (11). Use Allen wrench (12).
- Place stretcher bar (4) between extension leg (2). SEE FIGURE 4
- Secure stretcher bar (4) with screw (11). Use Allen wrench (12).
- TIGHTEN SCREWS (9) FIGURE 1 STEP 1 AND SCREWS (11) FIGURE 2 AND 4 STEP 1



Instruction Sheet

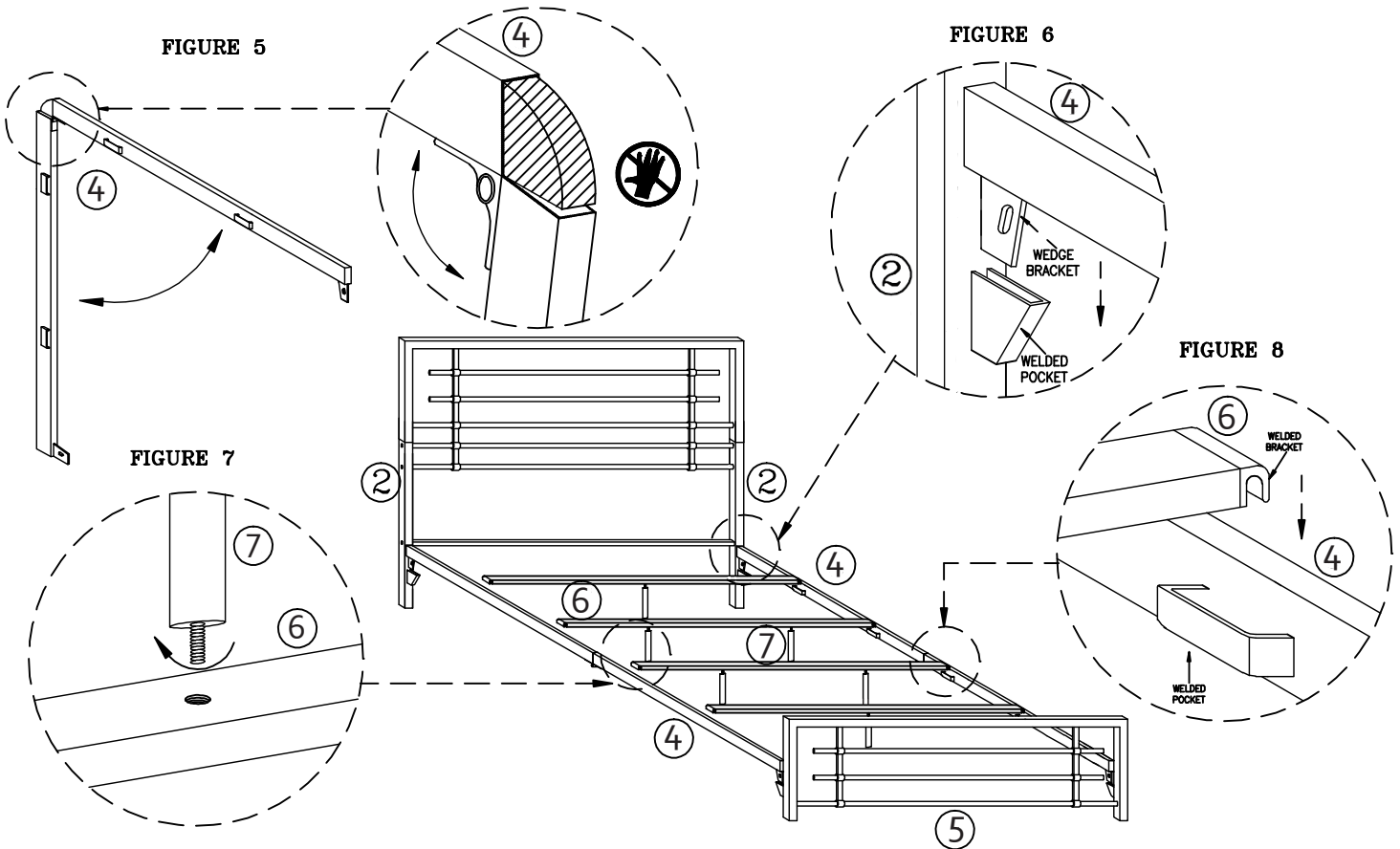
NOTE: TO PREVENT SERIOUS INJURIES DO NOT PLACE HANDS OR FINGER BETWEEN MOVING PARTS.

Step 2- Assembly of Side Rails.

- Place headboard panel on desired location in room.
- Carefully un-fold side rail (5) . SEE FIGURE 5
- Insert wedge bracket of side rail (5) into welded pocket of extension leg (2). SEE FIGURE 6
- Repeat same steps with footboard panel (6).

Step 3- Assembly of Support leg / Cross Rails.

- Secure support leg (8) on cross rail (7). SEE FIGURE 7
- Insert welded bracket on cross rail (7) into welded pocket on side rail (5). SEE FIGURE 8



BED FULLY ASSEMBLED

