




ASSEMBLY INSTRUCTIONS

DRESSER

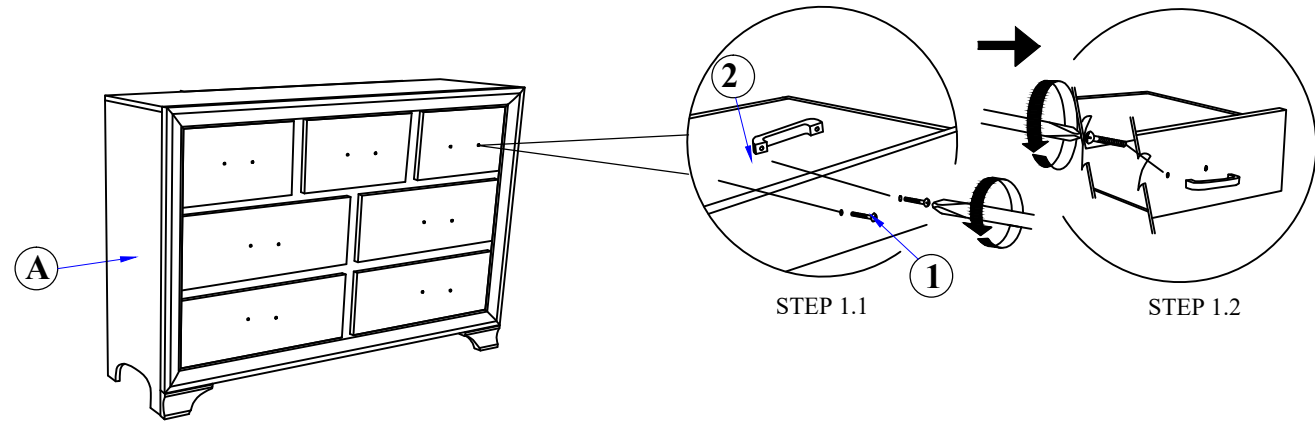
(BOX 1) BOX OF DRESSER

NO	ITEM	QTY
	DRESSER	
A		1 PC

(BOX 1) HARDWARE LIST

NO	ITEM	QTY
1	Truss Head Machine Screw m4x32mm Blk 	14 PCS
2	HANDLE 	7 PCS

STEP 1 : Remove HANDLE (2) using a Philips head screw driver as shown in illustration STEP - A. Re-install the HANDLE (2) as per diagram STEP - B. Repeat STEP - A STEP - B until HANDLE (2) are attached correctly.



COMPLETED ASSEMBLY

NOTE : MUST TIGHTEN SCREWS **PERIODICALLY** WITH USE SCREW WILL BECOME LOOSE CHECK TIGHTNESS OF ALL SCREW EVERY 6-8 WEEKS.