

INSTALLATION



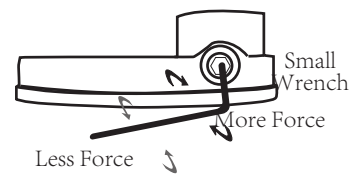
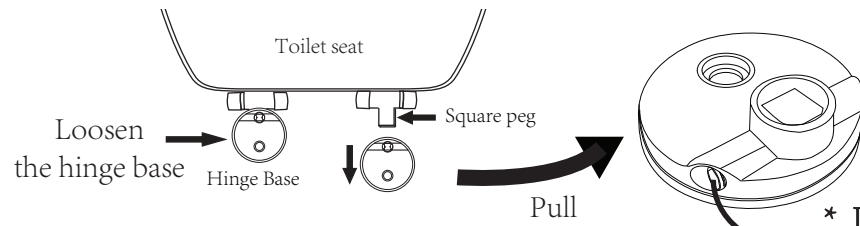
Hardware parts

2 Hinge Bases, 2 Expansion Dowels, 2 Cone Nuts, 2 Cone Washers, 2 Hex Head Bolts, 2 Gasket, 2 Caps, 1 Small and 1 Large Allen Wrench

Step 1: Before you open the plastic seal inside the box, check the toilet seat is the same type of toilet.

Step 2: Check whether you have all hardware parts from a bag.

Step 3: REMOVE HINGE BASES... to remove hinge bases, you need to loosen tiny hex bolts little bit on the hinge base sides.



* Do NOT LOOSEN the tiny hex bolts ALL THE WAY. You may drop tiny parts inside the base: bolts, balls, springs when you loosen the tiny hex bolts all the way.

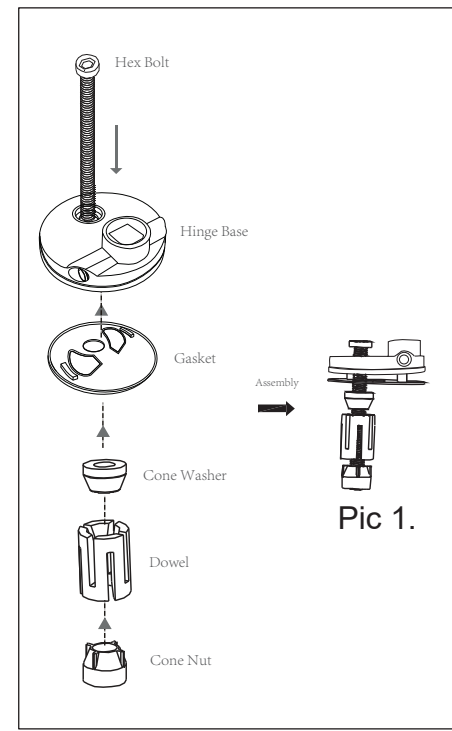
Step 4: After removing hinge bases, test the tightness of hinge bases. You put the square pegs in and out couple of times. If it is too easy to snap in, and out, it won't secure the toilet seat. Make sure not too tight but not too loose.

Step 5: Assemble all hardware like Pic 1.

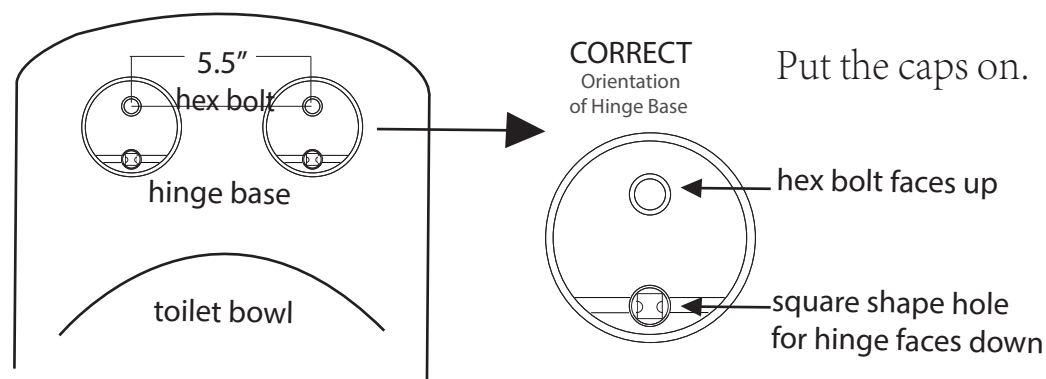
Step 6: Put assembled parts into the toilet holes and tighten the hinge with a wrench. Make sure the distance is 5.5 inches from the center of hinge base to another hinge base. (Pic 2)

Step 7: Tighten up long hex bolts but make sure the alignment. Prevent the base from rotating with your other hand for alignment.

Step 8: Put assembled parts (Pic 1) into the toilet holes and tighten the hinge with a wrench. Make sure the distance is 5.5 inches from the center of hinge base to another hinge base and alignment. Square hole faces down!! (Pic 3)

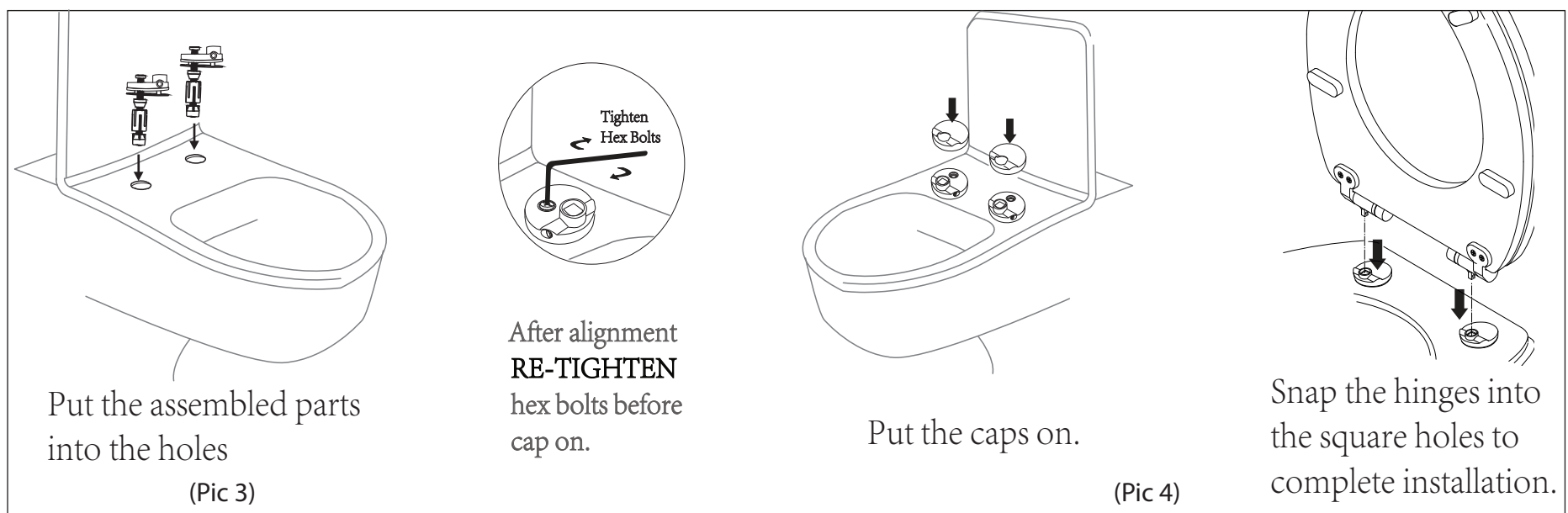


(Pic 2)



installation in Youtube.
<https://www.youtube.com/watch?v=RmVHWq25puo>

Step 9: On both hinges use the short shaft of the large allen wrench to further tighten the bolt until you cannot turn the bolt any more. Put the caps on. Then, snap the square pegs into the hinge base. (Pic 4)



TOPSEAT Toilet Seat Cleaning

Toilet seats should be cleaned using mild hand soap and water. Antibacterial hand soap or dish soap can be used to fight against germs. Do not use bleach, pine oils, essential oils, chlorine, acid, scouring powders, detergents, disinfectants, or products in aerosol cans. Harsh chemicals can damage the paint finish, bumpers, and the metal finish on hinges. This can create a dull look on plastic toilet seats and a dirty worn-away look on molded wood seats as well as corrosion and peeling of the metal hinge finish. The bumpers may change color or become weakened such that they fail under compression.