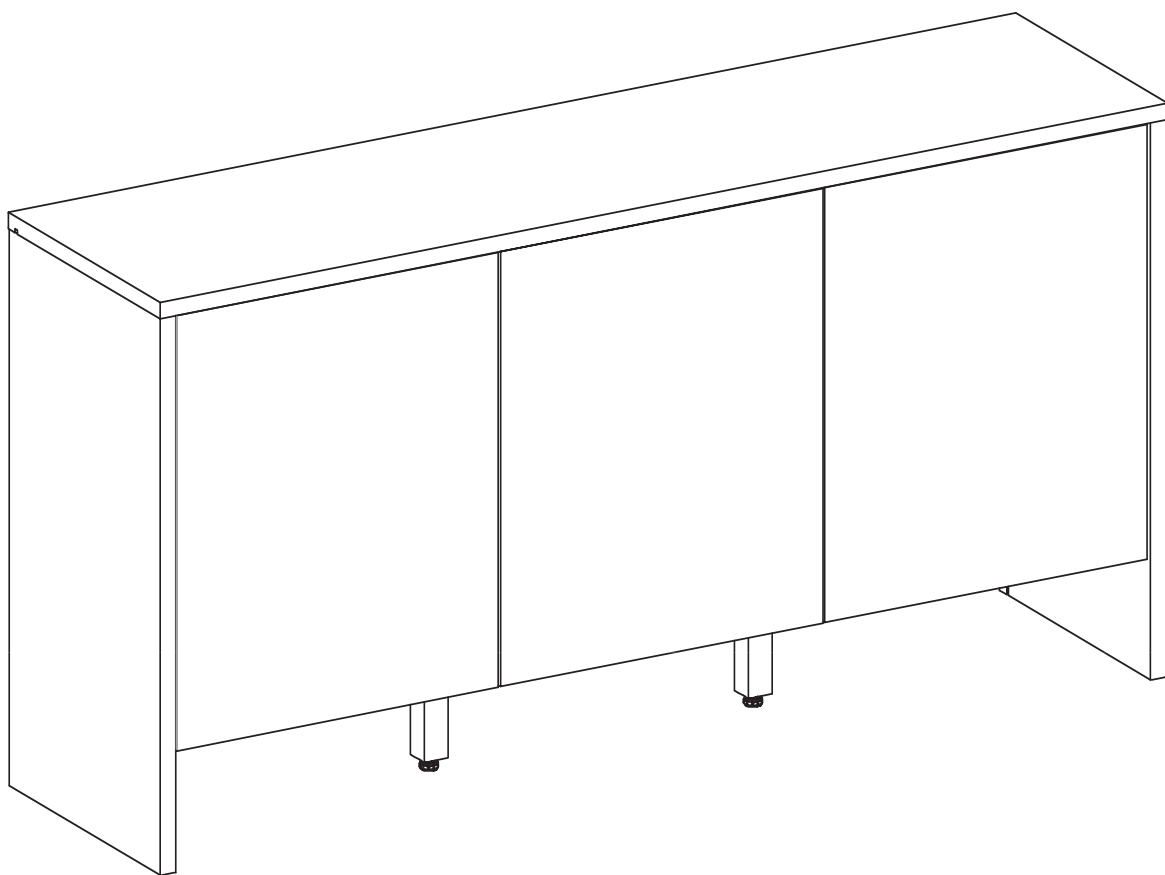


ASSEMBLY INSTRUCTIONS

EEI-6860

V0.01.01.24



Questions? Contact us!

609.256.9000 • cs@modway.com
www.modway.com

***modway**



Read through all of the instructions before starting



Care instructions are listed in the last step of this manual



Approx. 90 minutes assembly time



Make sure you have all parts and components before discarding any packing materials



2 people recommended for assembly

Only use hand tools to assemble this item. Do not use power tools.

Do not tighten bolts or screws completely until all hardware is lined up and inserted into the holes.

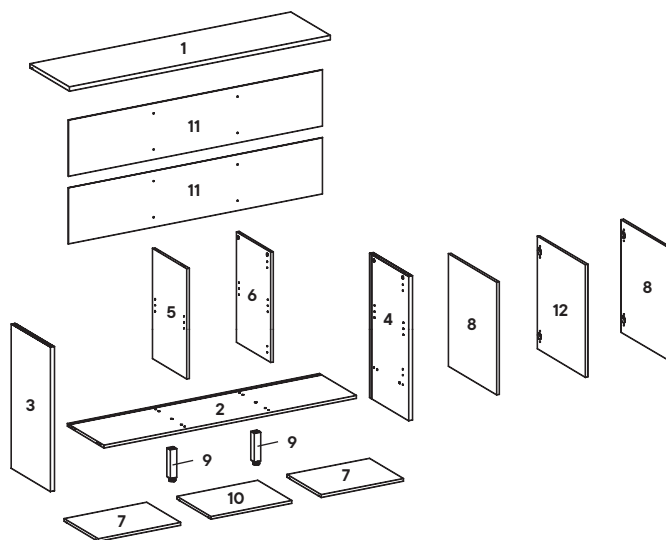
Do not over-tighten screws and bolts to avoid stripping the hardware or cracking the item.

Assemble your item on a flat, carpeted area, with plenty of space to work. This will prevent damage and scratches to your floors or the item while you're assembling the product.

Keep all components and packaging out of reach of children or animals to avoid risk of choking or suffocation.

Furniture components:

1	Top Board	x1	10	Middle Shelf	x1
2	Bottom Board	x1	11	Backboard	x2
3	Left Board	x1	12	Middle Door	x1
4	Right Board	x1			
5	Divider Left Board	x1			
6	Divider Right Board	x1			
7	Side Shelf	x2			
8	Side Door	x2			
9	Leg	x2			



Provided hardware:

A		Cam Lock Ø15 mm	x12	J		H-Profile	x1
B		Cam Bolt Ø7.5 x 32 mm	x12	K		Push to Open	x3
C		Cam Cover Ø17 mm	x8	L		Shelf Pin M7 x 16.5 mm	x12
D		Plastic Dowel M8 x 32 mm	x16	M		Full Curve Door Hinge	x4
E		Screw M6 x 8 mm	x6	N		Screw M3 x 12 mm	x8
F		Screw M4 x 19 mm	x18	O		Half Curve Door Hinge	x2
G		Backply Stopper	x18	P		L Plate	x4
H		Screw M10 x 33.5 mm	x6	Q		Screw M4 x 10 mm	x28
I		Wall Bracket Set	x1				

What you need:



Wait!

Missing parts or hardware? Need assistance?

Contact us before returning your item. We're here to help!

609.256.9000 • cs@modway.com

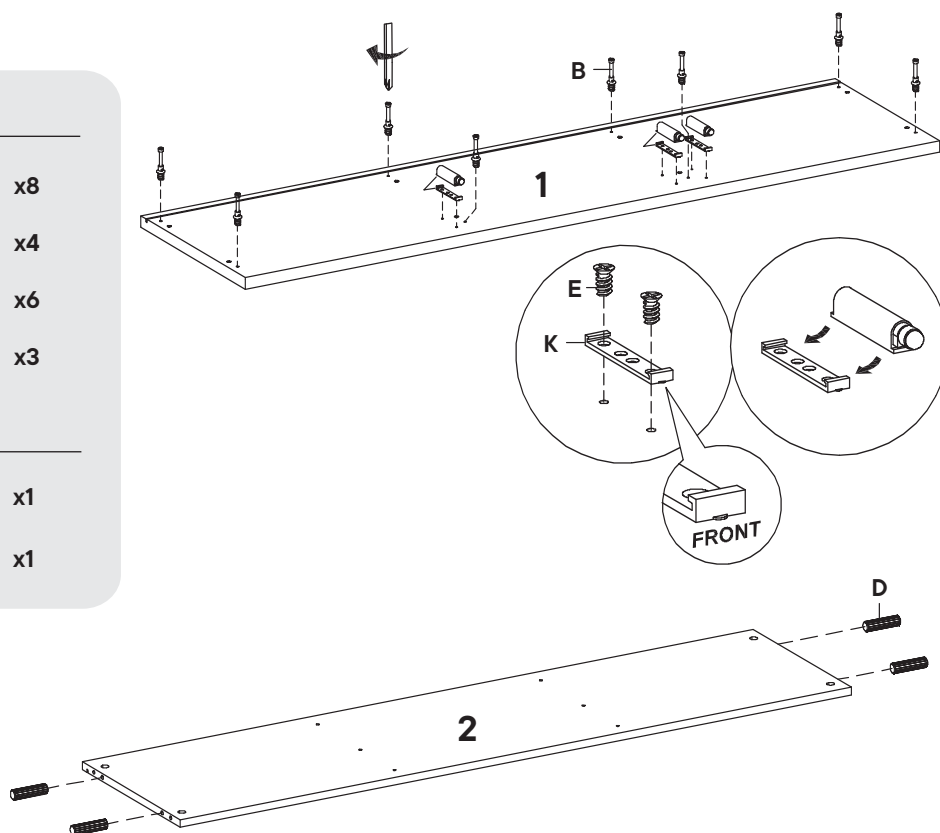
Step 1

HARDWARE

B	Cam Bolt Ø7.5 x 32 mm	x8
D	Plastic Dowel M8 x 32 mm	x4
E	Screw M6 x 8 mm	x6
K	Push To Open	x3

COMPONENTS

1	Top Board	x1
2	Bottom Board	x1



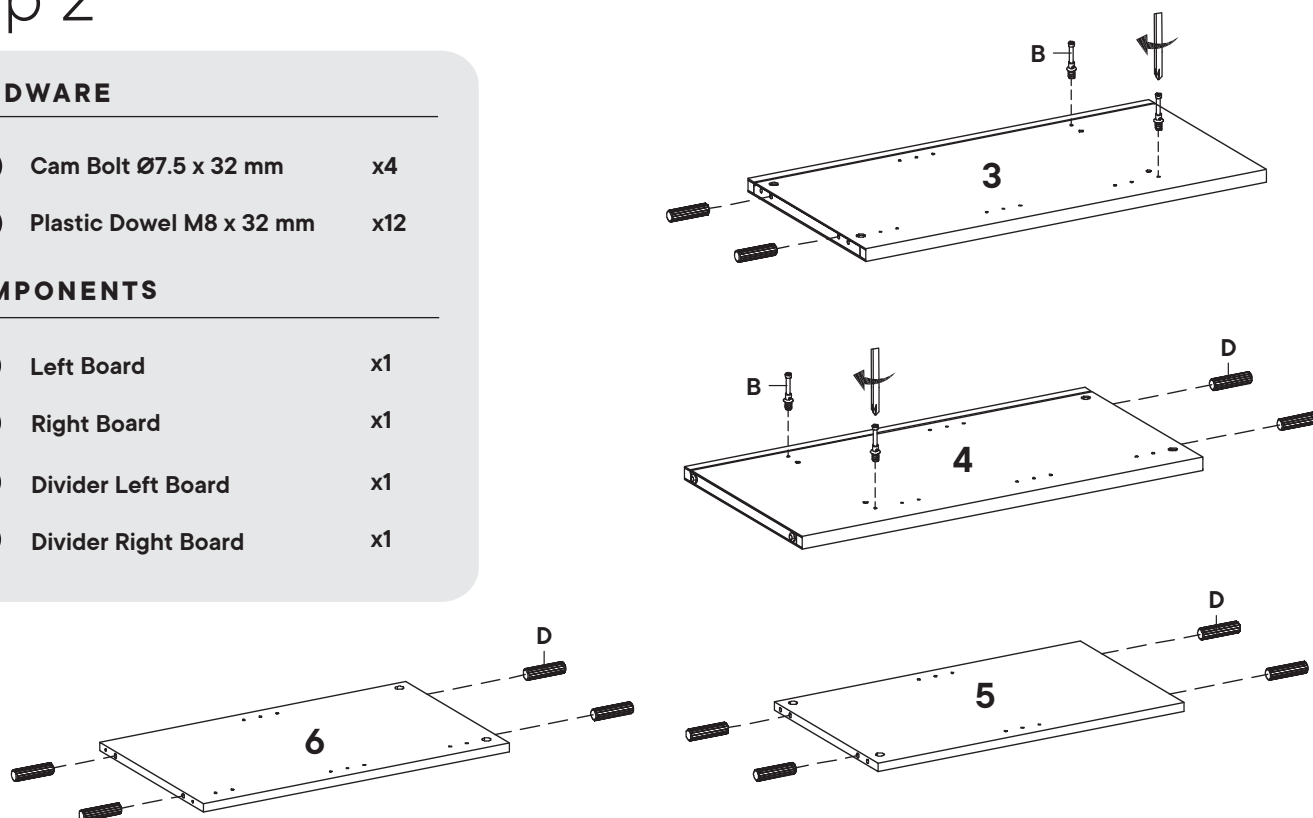
Step 2

HARDWARE

B	Cam Bolt Ø7.5 x 32 mm	x4
D	Plastic Dowel M8 x 32 mm	x12

COMPONENTS

3	Left Board	x1
4	Right Board	x1
5	Divider Left Board	x1
6	Divider Right Board	x1



Step 3

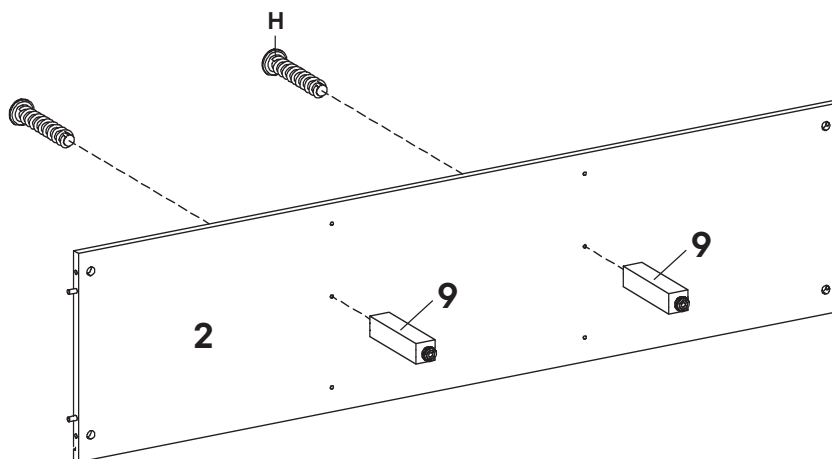
HARDWARE

H Screw M10 x 33.5 mm x2

COMPONENTS

2 Bottom Board x1

9 Leg x2



Step 4

HARDWARE

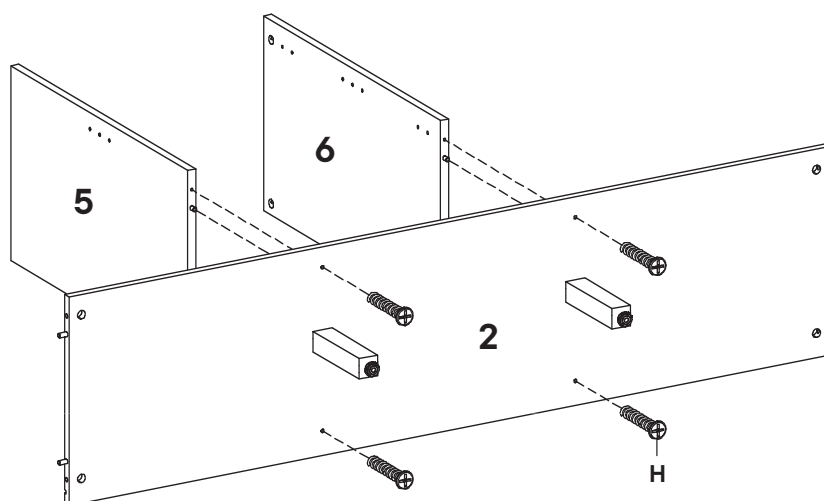
H Screw M10 x 33.5 mm x4

COMPONENTS

2 Bottom Board x1

5 Divider Left Board x1

6 Divider Right Board x1



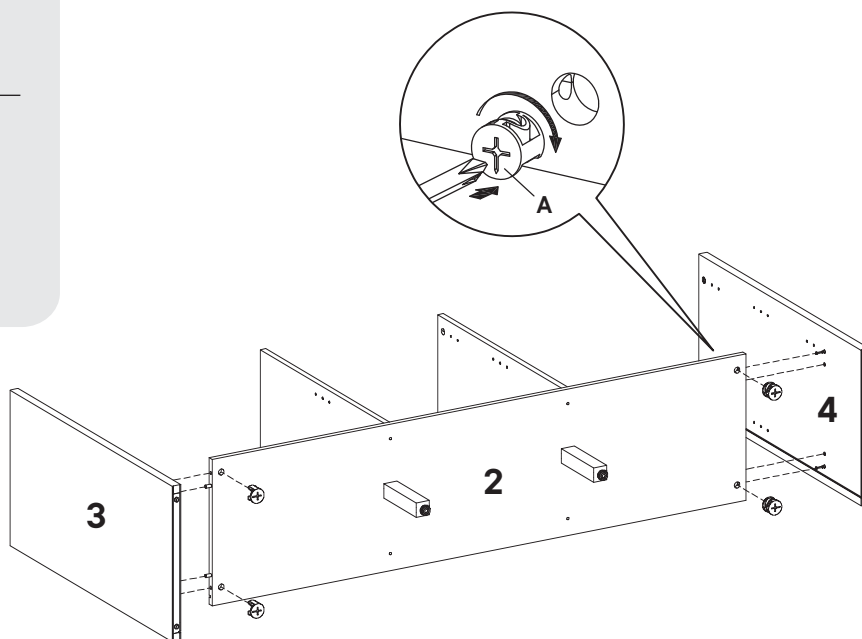
Step 5

HARDWARE

- A** Cam Lock Ø15 mm x4

COMPONENTS

- 2** Bottom Board x1
3 Left Board x1
4 Right Board x1



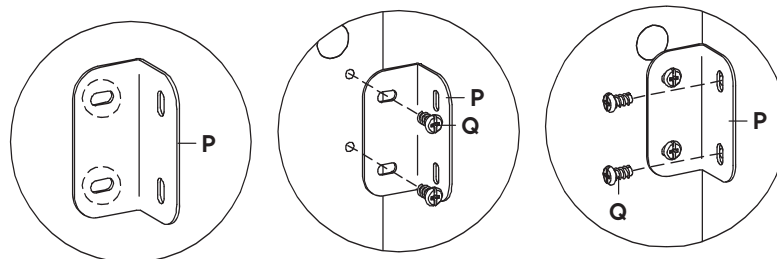
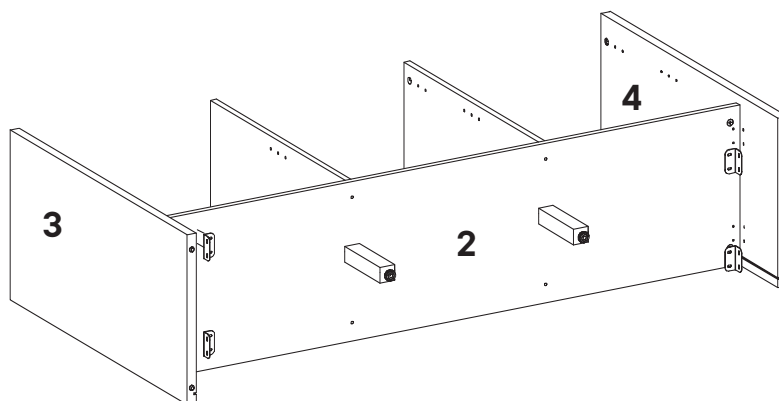
Step 6

HARDWARE

- P** L Plate x4
Q Screw M4 x 10 mm x16

COMPONENTS

- 2** Bottom Board x1
3 Left Board x1
4 Right Board x1



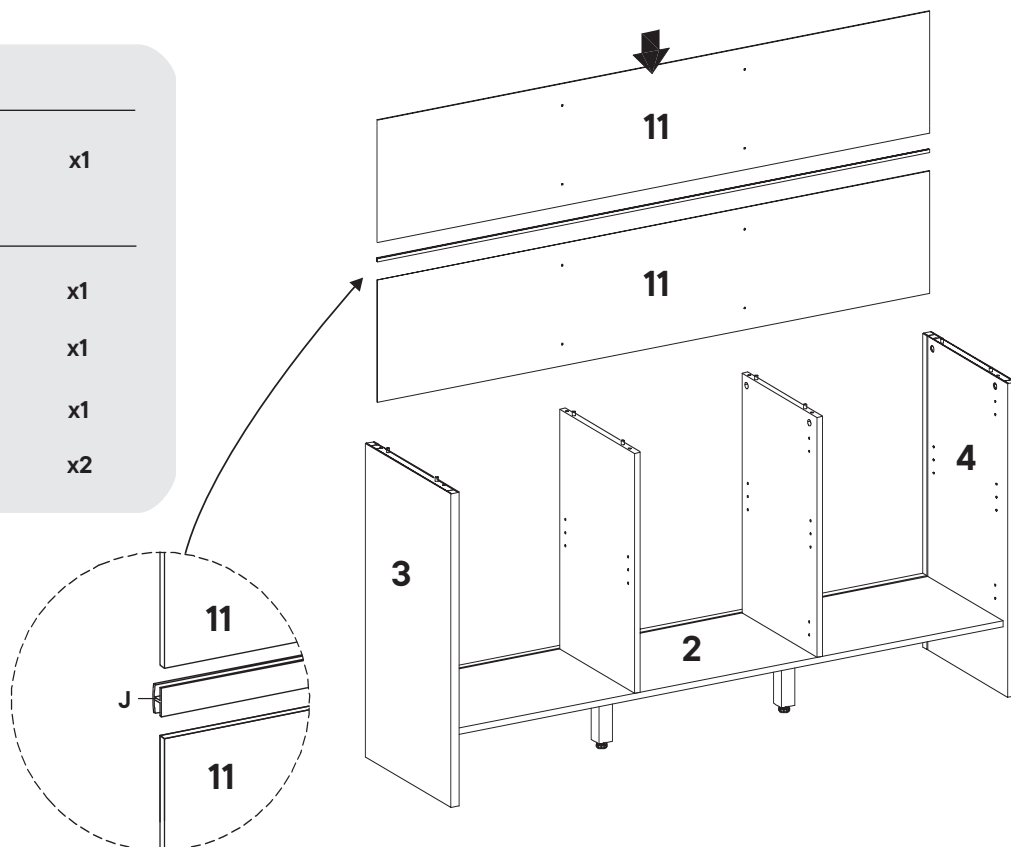
Step 7

HARDWARE

- J** H-Profile x1

COMPONENTS

- 2** Bottom Board x1
3 Left Board x1
4 Right Board x1
11 Backboard x2



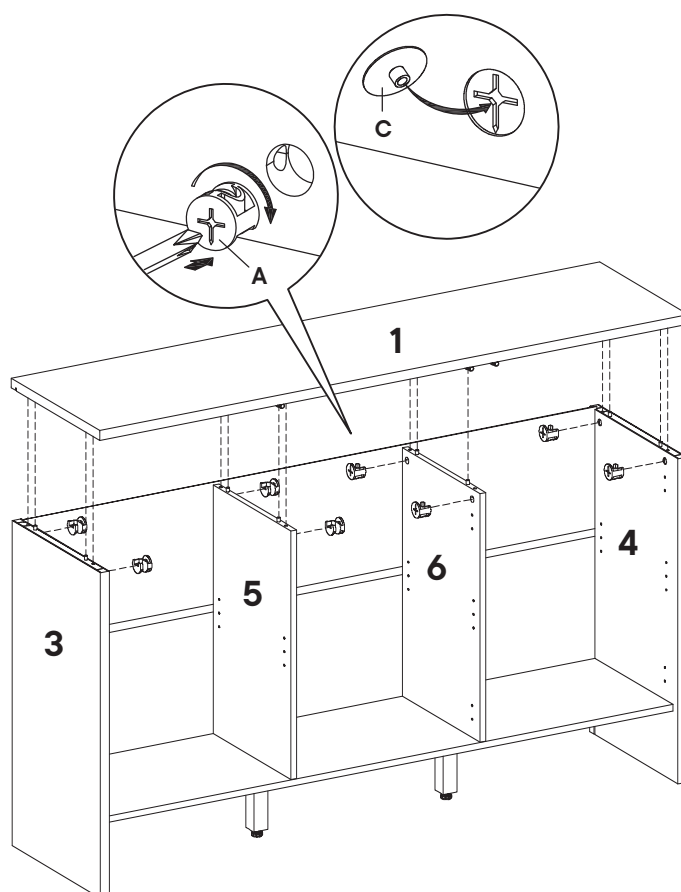
Step 8

HARDWARE

- A** Cam Lock Ø15 mm x8
C Cam Cover Ø17 mm x8

COMPONENTS

- 1** Top Board x1
3 Left Board x1
4 Right Board x1
5 Left Divider x1
6 Right Divider x1



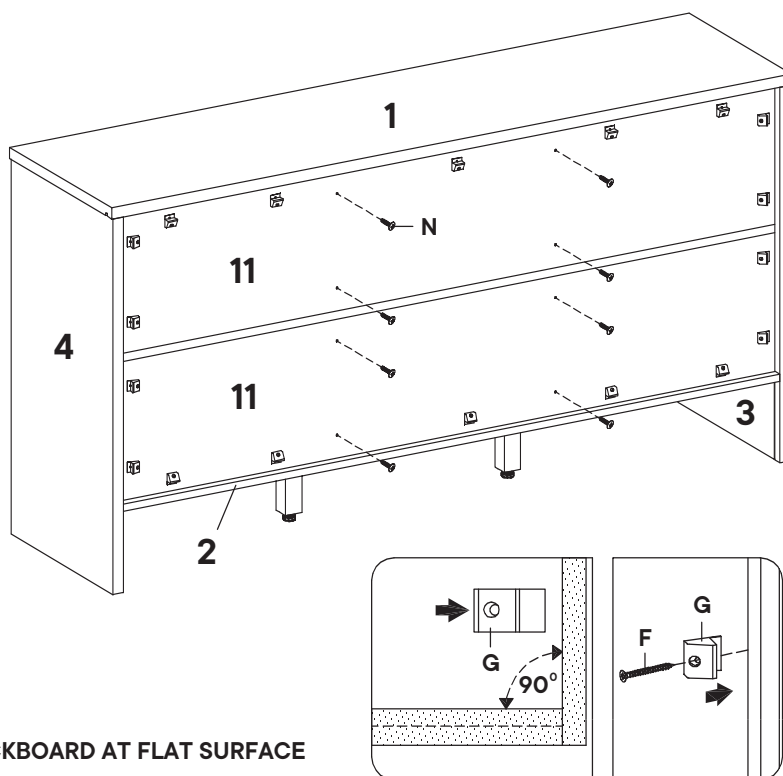
Step 9

HARDWARE

F	Screw M4 x 19 mm	x18
G	Backply Stopper	x18
N	Screw M3 x 12 mm	x8

COMPONENTS

1	Top Board	x1
2	Bottom Board	x1
3	Left Board	x1
4	Right Board	x1
11	Backboard	x2



MUST INSTALLED BACKBOARD AT FLAT SURFACE

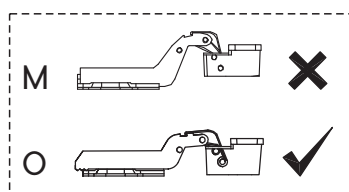
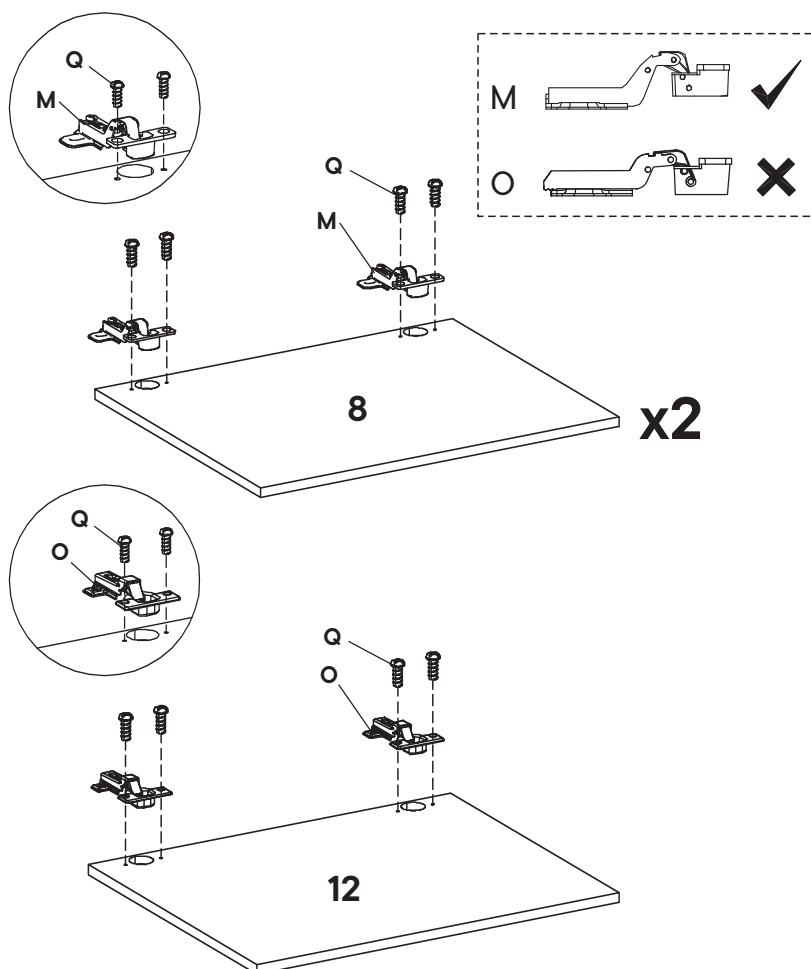
Step 10

HARDWARE

M	Full Curve Door Hinge	x4
O	Half Curve Door Hinge	x2
Q	Screw M4 x 10 mm	x12

COMPONENTS

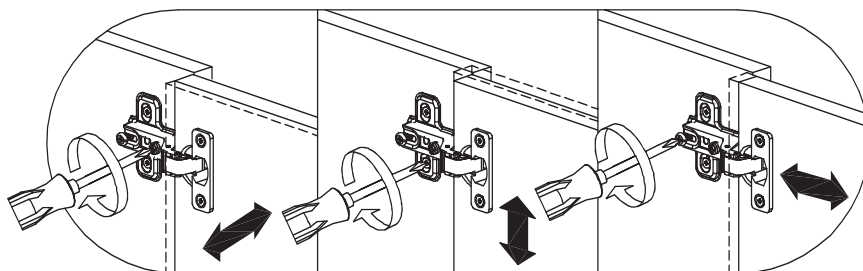
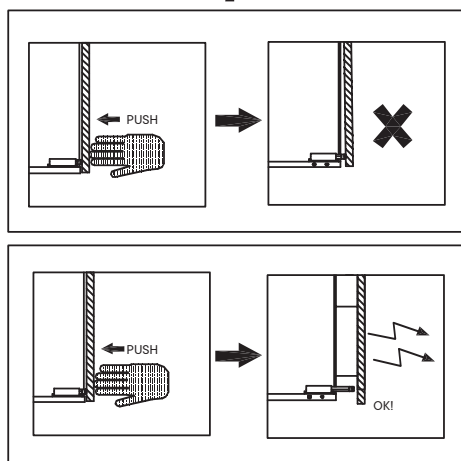
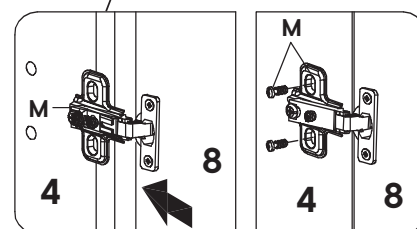
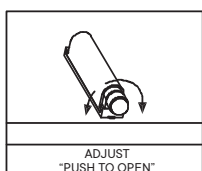
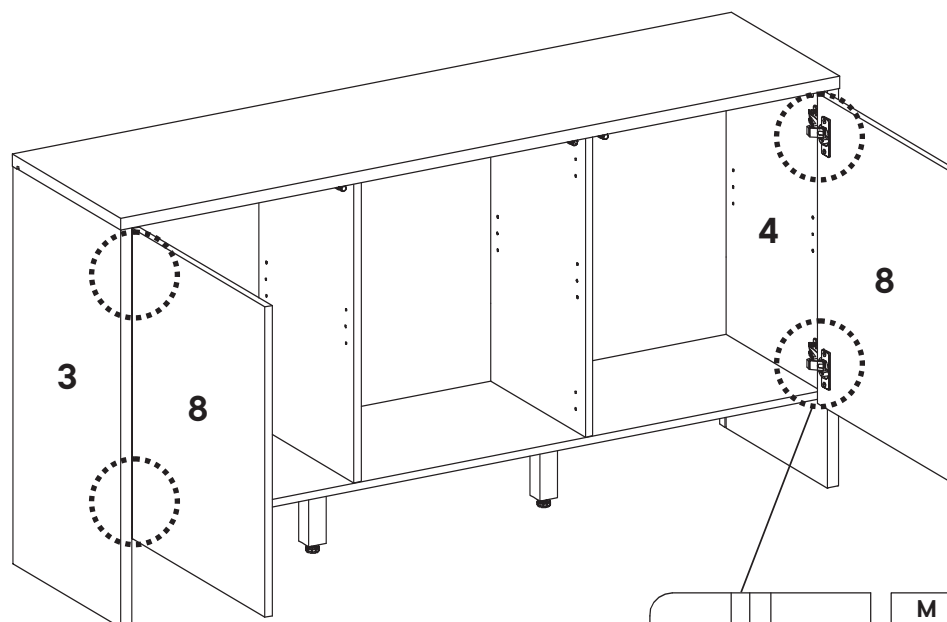
8	Side Door	x2
12	Middle Door	x1



Step 11

COMPONENTS

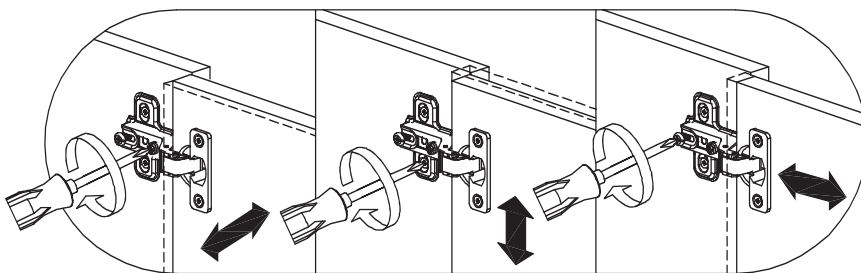
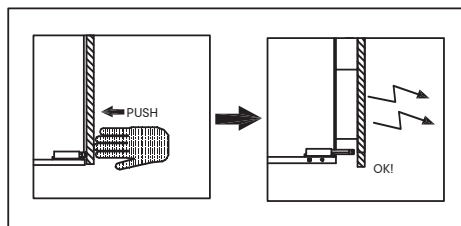
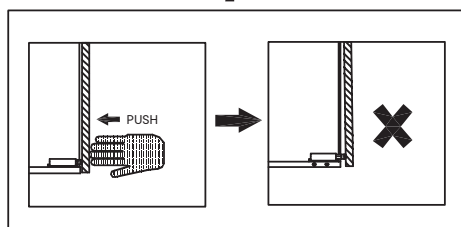
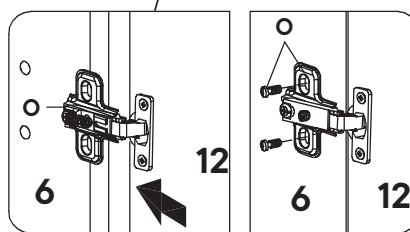
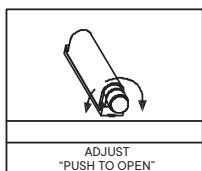
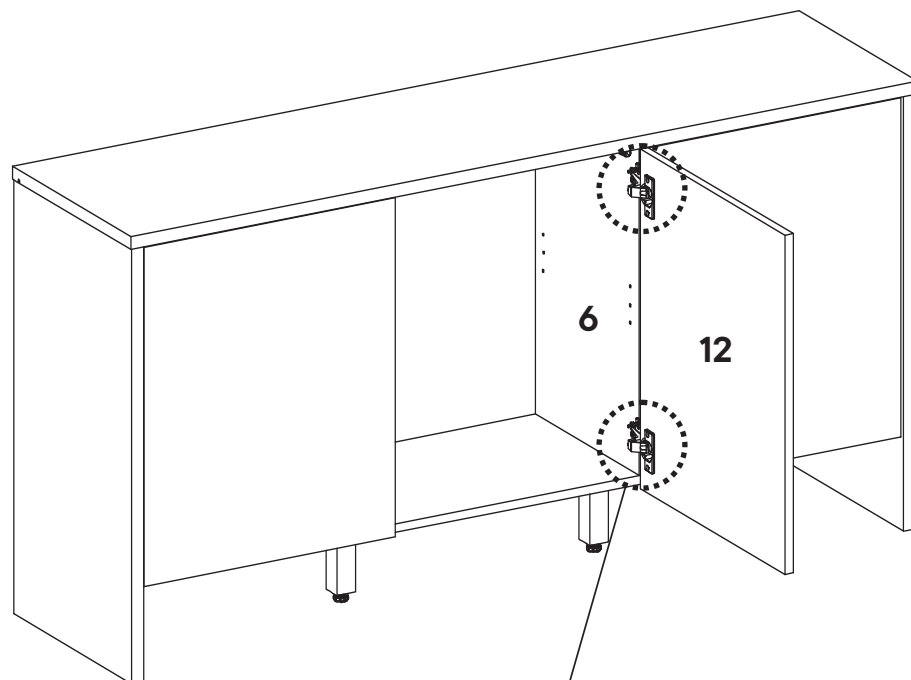
- | | | |
|---|-------------|----|
| 3 | Left Board | x1 |
| 4 | Right Board | x1 |
| 8 | Side Door | x2 |



Step 12

COMPONENTS

- | | | |
|----|---------------------|----|
| 6 | Divider Right Board | x1 |
| 12 | Middle Door | x1 |



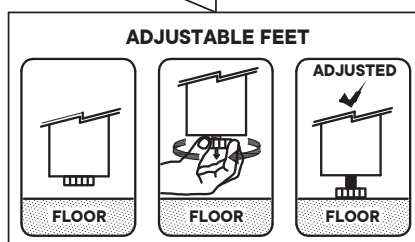
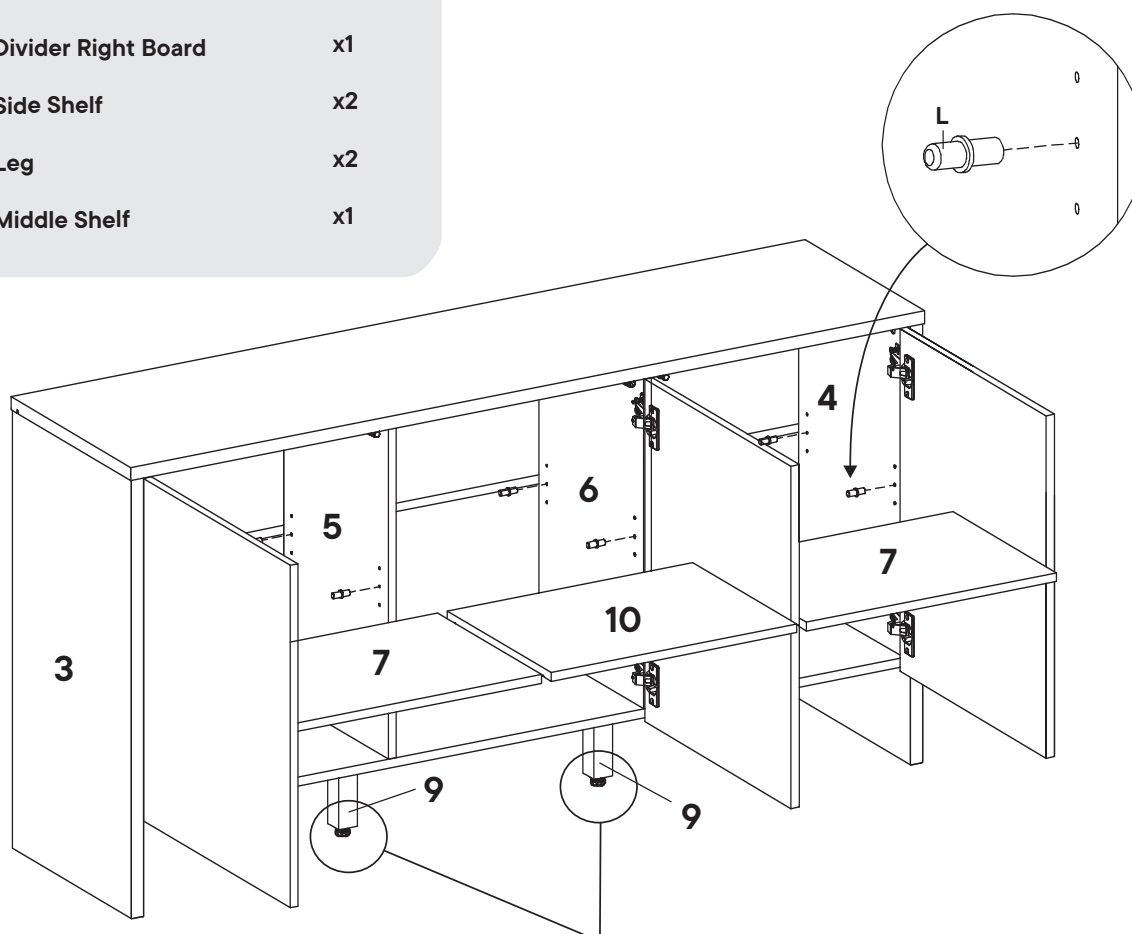
Step 13

HARDWARE

L Shelf Pin M7 x 16,5 mm x12

COMPONENTS

3 Left Board x1
4 Right Board x1
5 Divider Left Board x1
6 Divider Right Board x1
7 Side Shelf x2
9 Leg x2
10 Middle Shelf x1



Great job!

Sideboard assembly is complete.

♥ CARING FOR YOUR ITEM

Indoor use only.

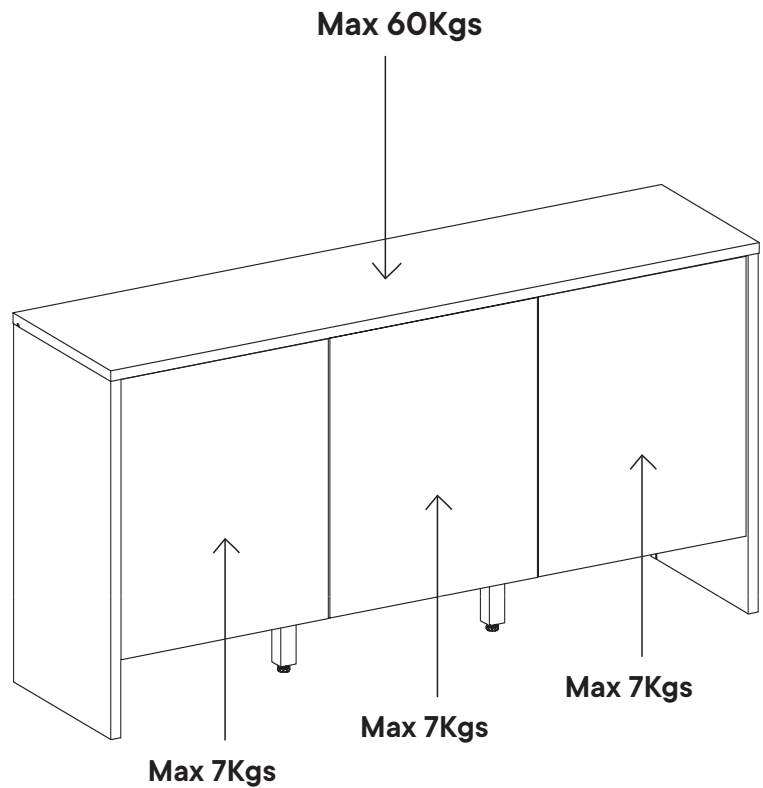
Not contract grade.

Clean using a non-abrasive cloth and a mild cleaner.

Never use harsh chemicals, as they could damage the finish or integrity of the item.

CONNECT WITH US!   

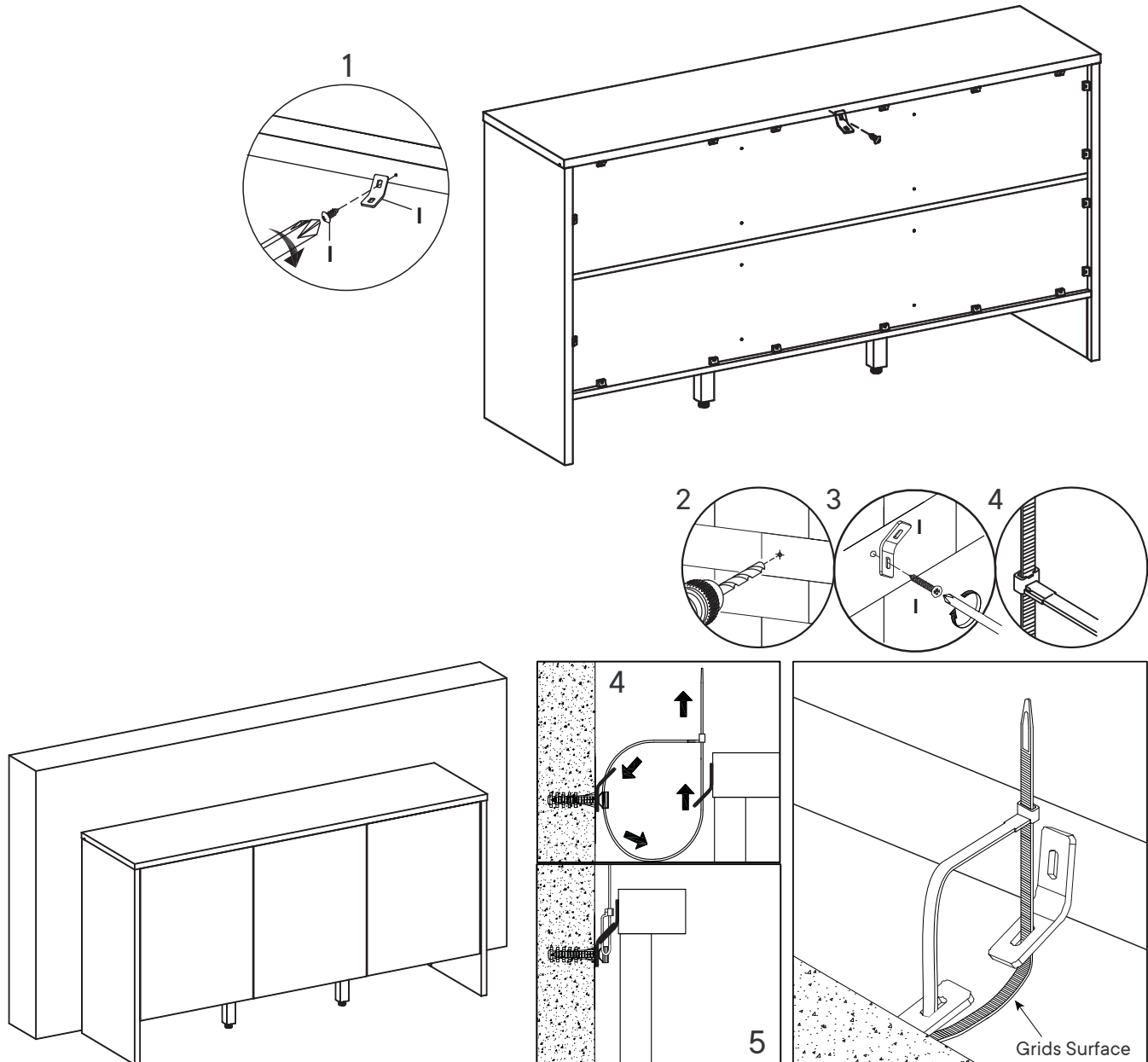
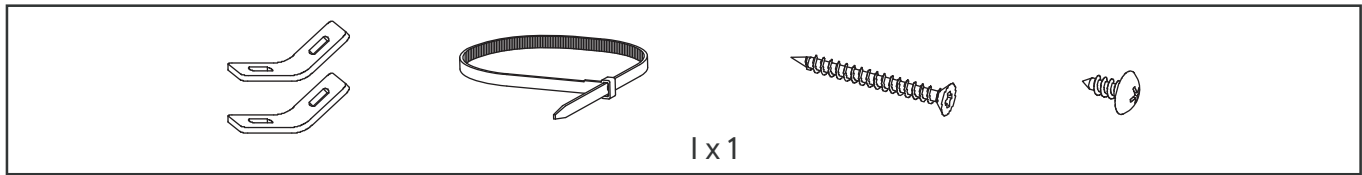
Tag us **@modway_furniture** and **#modway** for a chance to be featured.



TIPPING RESTRAINTS KIT INSTALLATION GUIDANCE

Different wall materials require unique wall fasteners.

Please consult your local hardware store to ensure you are using the correct hardware for you wall type.



Installation Instructions :

1. Attach bracket (I) securely to the back top of the furniture using short screw (I) provided.
2. Please make a hole on the wall for attach the bracket (I) to the back of unit.
3. Attach bracket (I) on the wall using long screw (I) as shown.
Locate the other bracket (I) on the wall. Place furniture into position so both brackets (I) as shown.
4. Lace the end of the restrains strap through the larger hole in each bracket. Ensure the restrains strap with grids surface facing the inner loops. Bring both ends together and slide the flat end through the locking end and draw it through until all slack is removed.
5. Make sure that the strap is securely laced & locked.