

# INSTRUCTION MANUAL

## ASSEMBLY GUIDE

Congratulations, you are now the owner of a brand new chair!

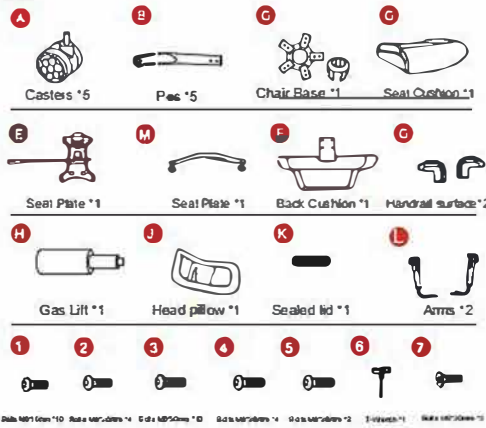
Before enjoy the comfortable chair, you have to put it together. This Assembly Guide will take you through the basic assembly process. To make sure your assembly goes smoothly, please follow the assembly instructions, and especially the important safety information.

Also, it is possible to assemble the chair on your own, having a second person to help you make it even easier.

Before you begin, please check if there are any missing part from the package. Should there be any issue, please don't hesitate to drop us an email and we'll help you out ASAP.

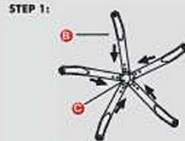


## PACKAGE LIST



## ASSEMBLY INSTRUCTION

**Step 1:** Attach base legs (B) to chair base (C).



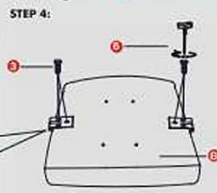
**Step 2:** Using five M5x16mm (1) bolts, tighten all the bolts with the wrench.



**Step 3:** Insert 5 wheels (A) into the slot of the base leg (B). Install gas lift (H) into the five star base (C).



**Step 4:** Attach the armrests (G) to the Seat (D) with the 6 screws M6\*30mm (3).



**Note:** Arm rests are labeled with an "L" (left) or "R" (right) to show which sides they should be placed on.



**Step 5:** Attach the seat plate (E) to the seat (D) with 4 pcs screws M5\*20mm (2).

**Note:** Do not tighten screws completely until all the screws are fixed in the correct position.



**Step 6:** Attach the Backrest (F) to the seat (D) with 4 pcs screws M5\*30mm (3).



**Step 7:** Place the Seat (D) on the gas lift (H).



**Step 8:** Complete installation.



**CAUTION:**  
 Make sure all bolts and screws are fully tightened before use in chair. Lubricate all moving parts and tighten all bolts / screws every 6 months or when ever needed.

Before you go to start, a few points:

Having a friend to help makes assembly easier.

Mind the important safety information.

Contact us if you have any issue.