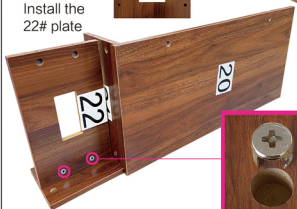




Step. 42

X2
Install the 22# plate



Step. 43

Screw the cam bolt into the plastic expansion nut

X8

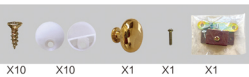


Step. 44

X6 Install the 24# plate

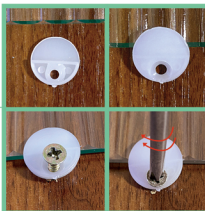
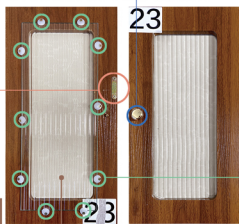


Step. 45



Step. 46

Install the hardware on Panel 23#



Before installing acrylic need to peel off the two surfaces of the transparent film





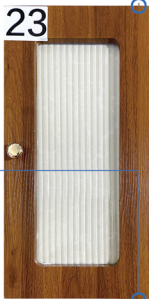
Step. 47

Install the hinge

X2



23



Step. 48

Screw the cam bolt into the plastic expansion nut

X2



Step.49

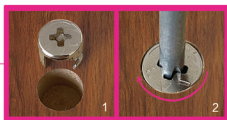
Install the 23# panel



Step. 50

X4

Install the 25# panel



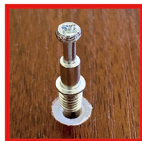
Step. 51



Step. 52

Screw the cam bolt into the plastic expansion nut

X4

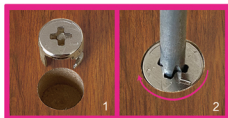




X2

Step. 53

Install the storage shelf.



X4

Step. 54

Install the shelf

26



X2

Step. 55 Secure the storage shelf

X4

Step. 56 Install the 29# panel



Step. 57

Screw the cam bolt into the plastic expansion nut

X4

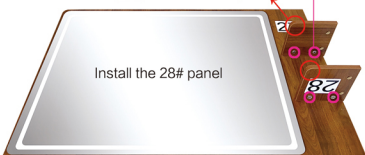


Step. 58

X4



Note: The rounded corner of the 28# board should face the side of the mercury mirror.



Step. 59 Install the 27# panel

X4



Step. 60

Connect Panel 27# and 29#

X4





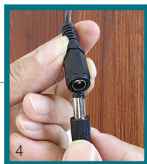
X1

Step. 61 Check the wiring and install the power adapter



Peel back the tape and remove the pre-wire

1



4



Check that the wiring is in a connected state

2

Returning lines in the connected state to their original position



3



X1

X2

Step. 62

Install the power strip



Friendly Reminder:

Gently touch "Ⓞ" to adjust the light color, and long press "Ⓞ" to adjust the light brightness.

In the off mode, long press the switch button to turn off the power indicator light.

Problems with the installation of drawers and solutions 1:

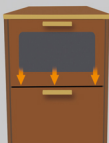


1: Loosen the screws fixing the slide rail

2: Move the slide downward

3: Tighten the screws clockwise

Problems with the installation of drawers and solutions 2:



1: Loosen the screws securing the slide rail

2: Move the slide upwards

3: Tighten the screws clockwise

The left side of the drawer is adjusted as follows.:



1: Loosen the screws securing the slide rail

2: Move the slide downward

3: Tighten the screws clockwise

The slide on the right side of the drawer is adjusted as follows:



1: Loosen the screws securing the slide rail

2: Move the slide upwards

3: Tighten the screws clockwise

Problems with the installation of drawers and solutions 3:



Supplement to Product Installation Instructions

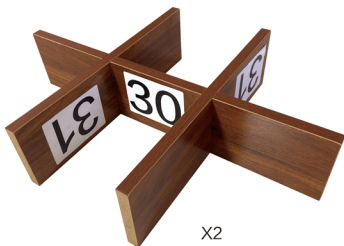
Step. 63 Install one board 30# together with two boards 31# .



X2



X4



X2

Step. 64 Place the storage compartment into the drawer1# and drawer 6# .

