

Instructions for

70.9" Long Sofa Table

Tips: Don't tighten screws till all steps completed in case there is alignment issue during assembly (The five and the six can be screwed in first)

Accessories:

Ax6个

Ex2个

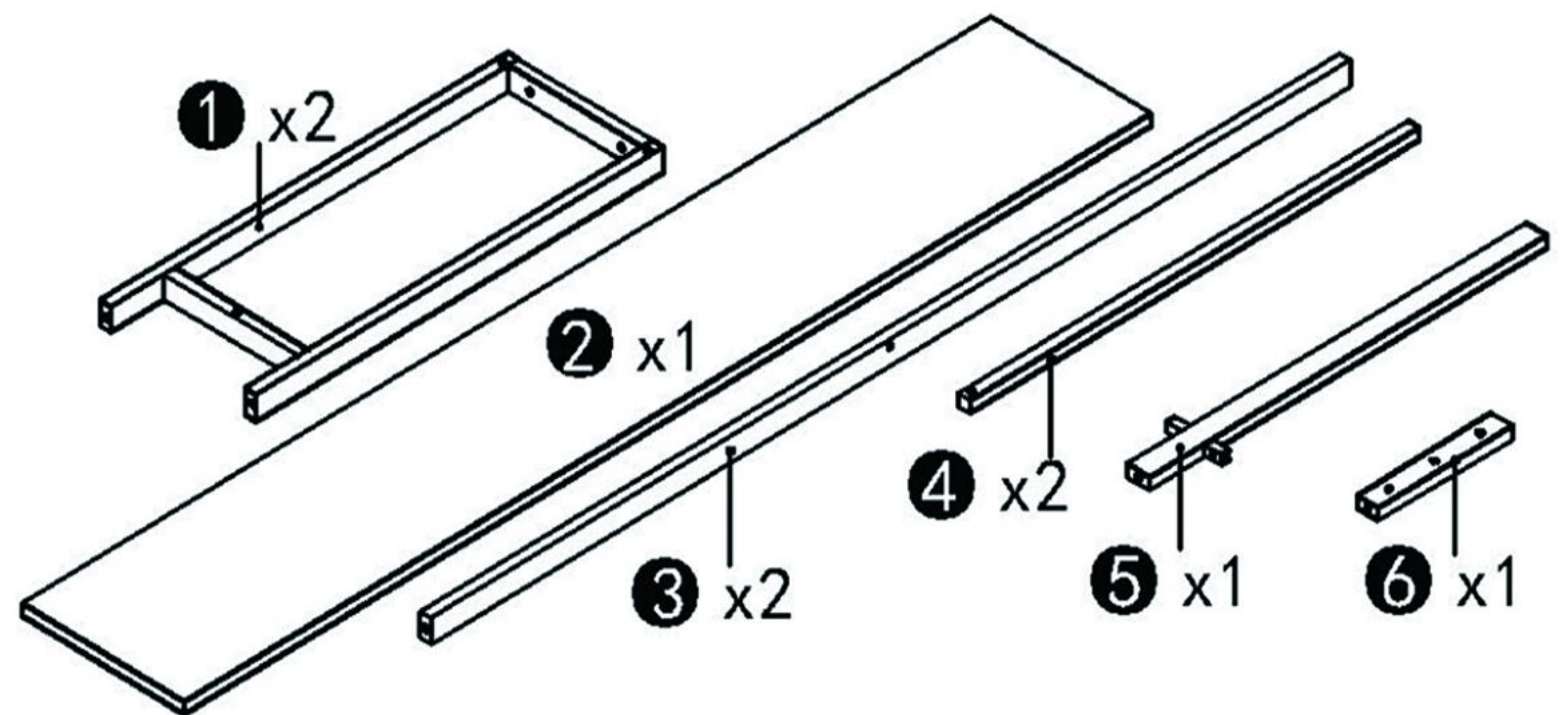
Bx3个

Fx5个

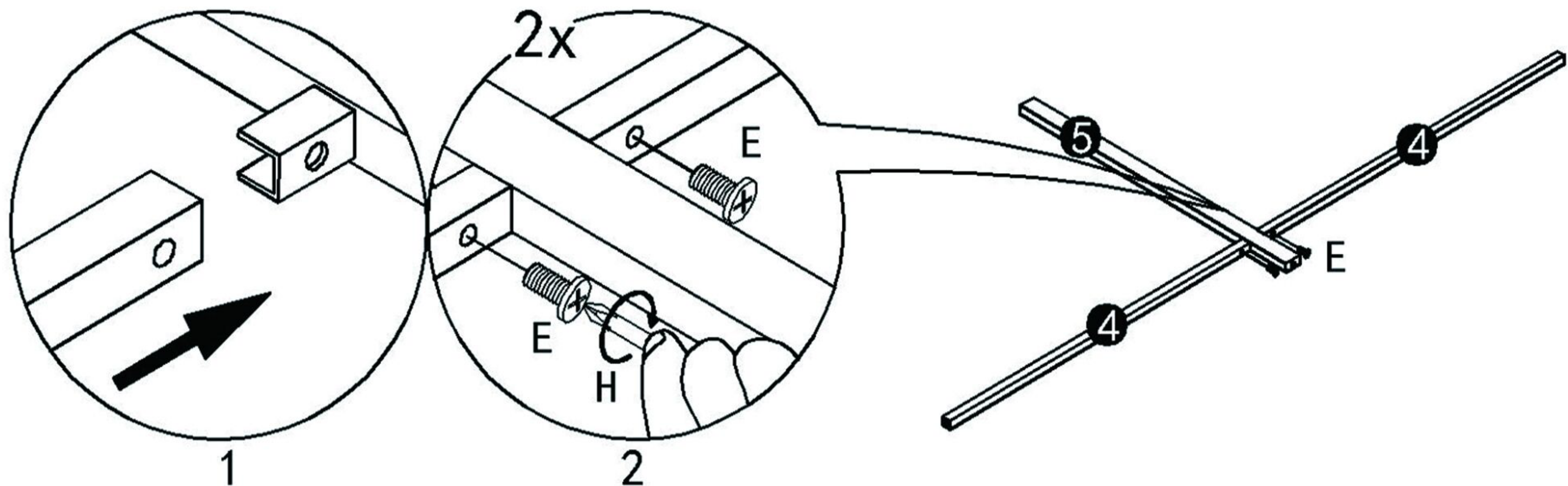
Dx6个

Gx1个

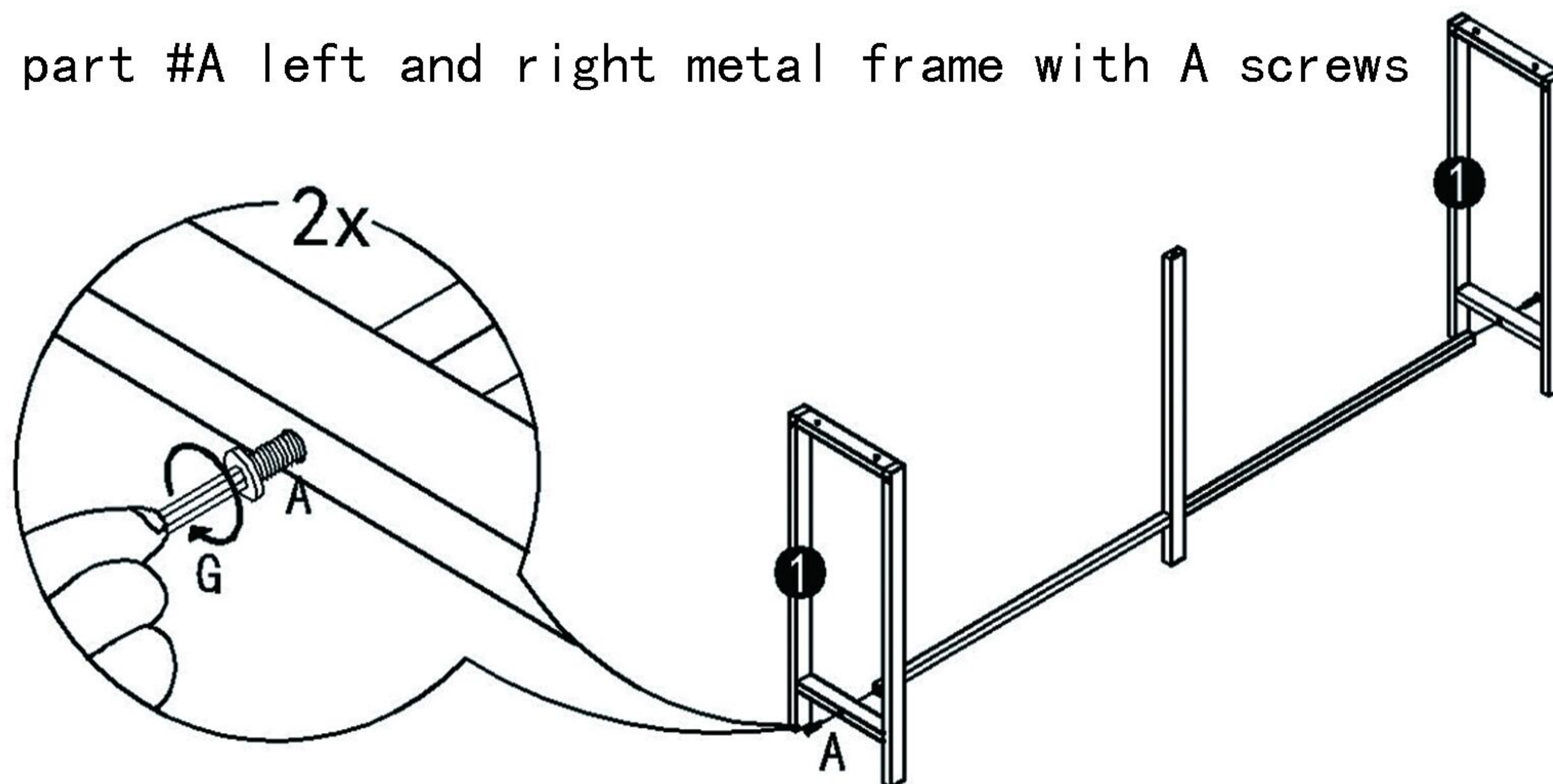
Hx1个



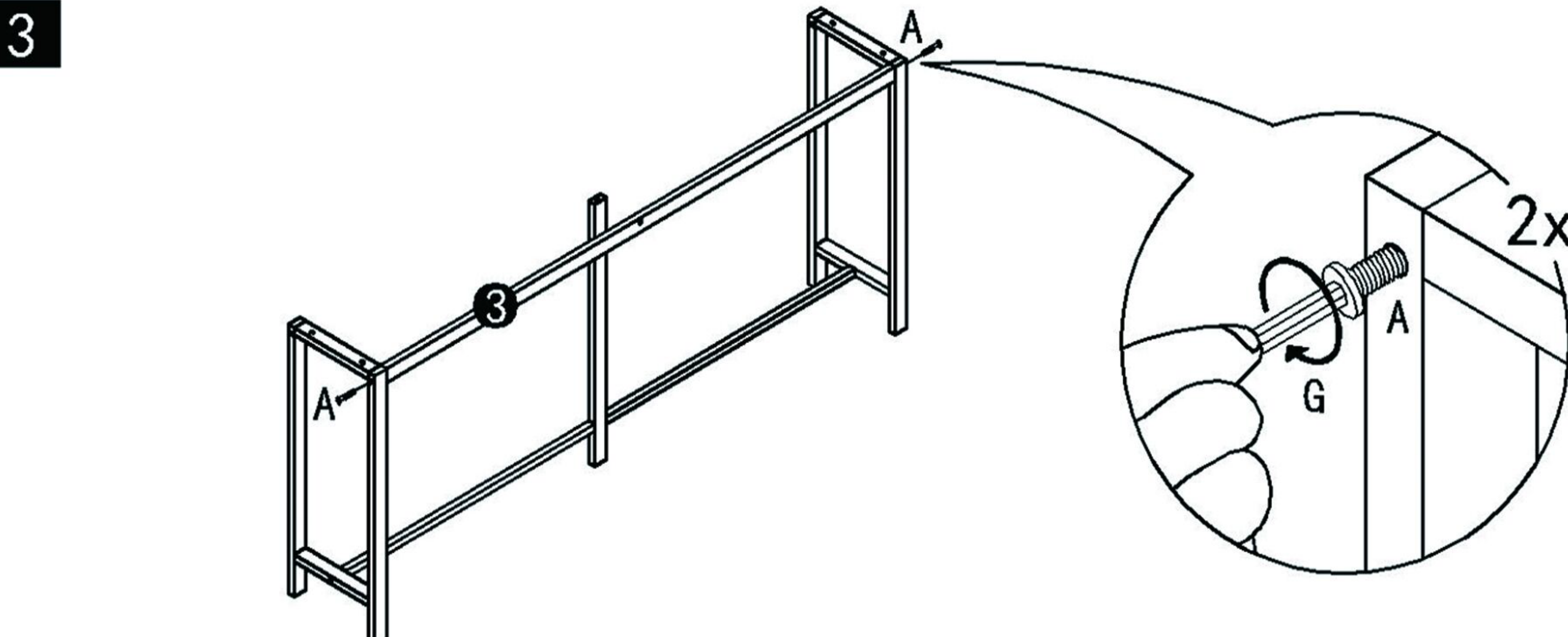
1 Install Part #4 and #5 with E screws



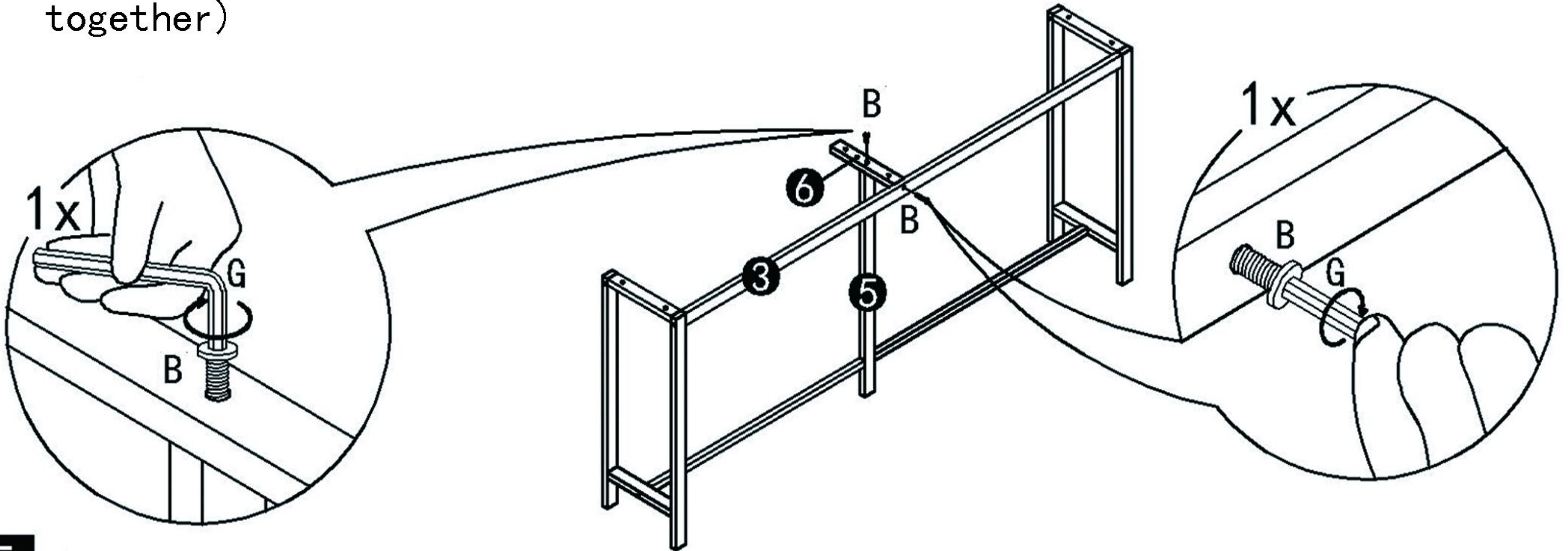
2 Install part #A left and right metal frame with A screws



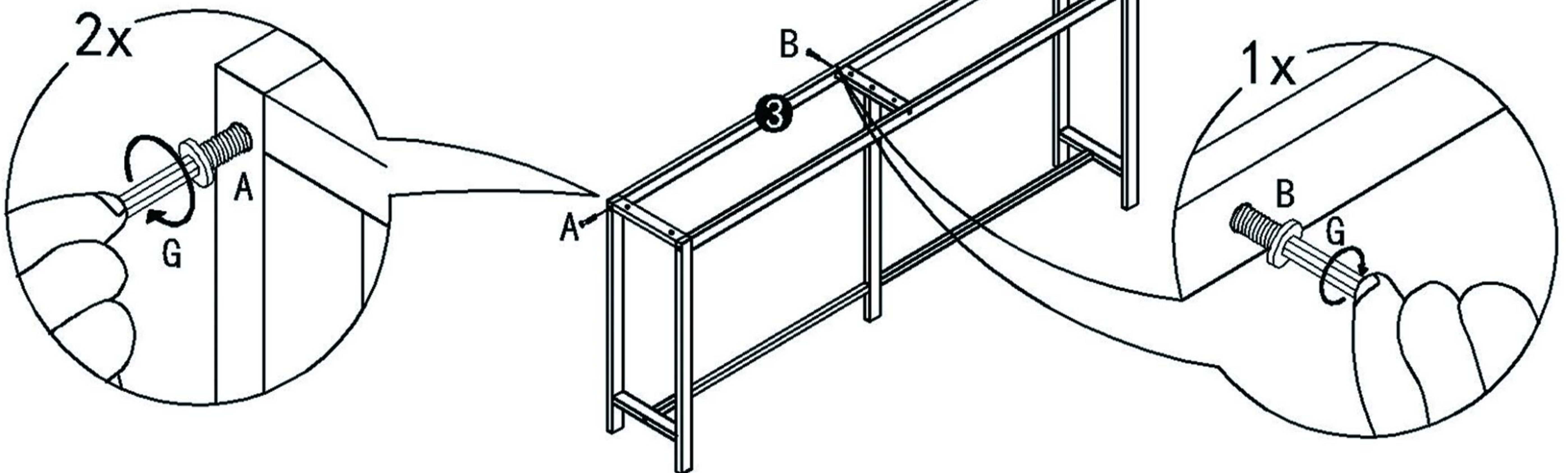
Install 2pcs part #3 metal poles with A screws



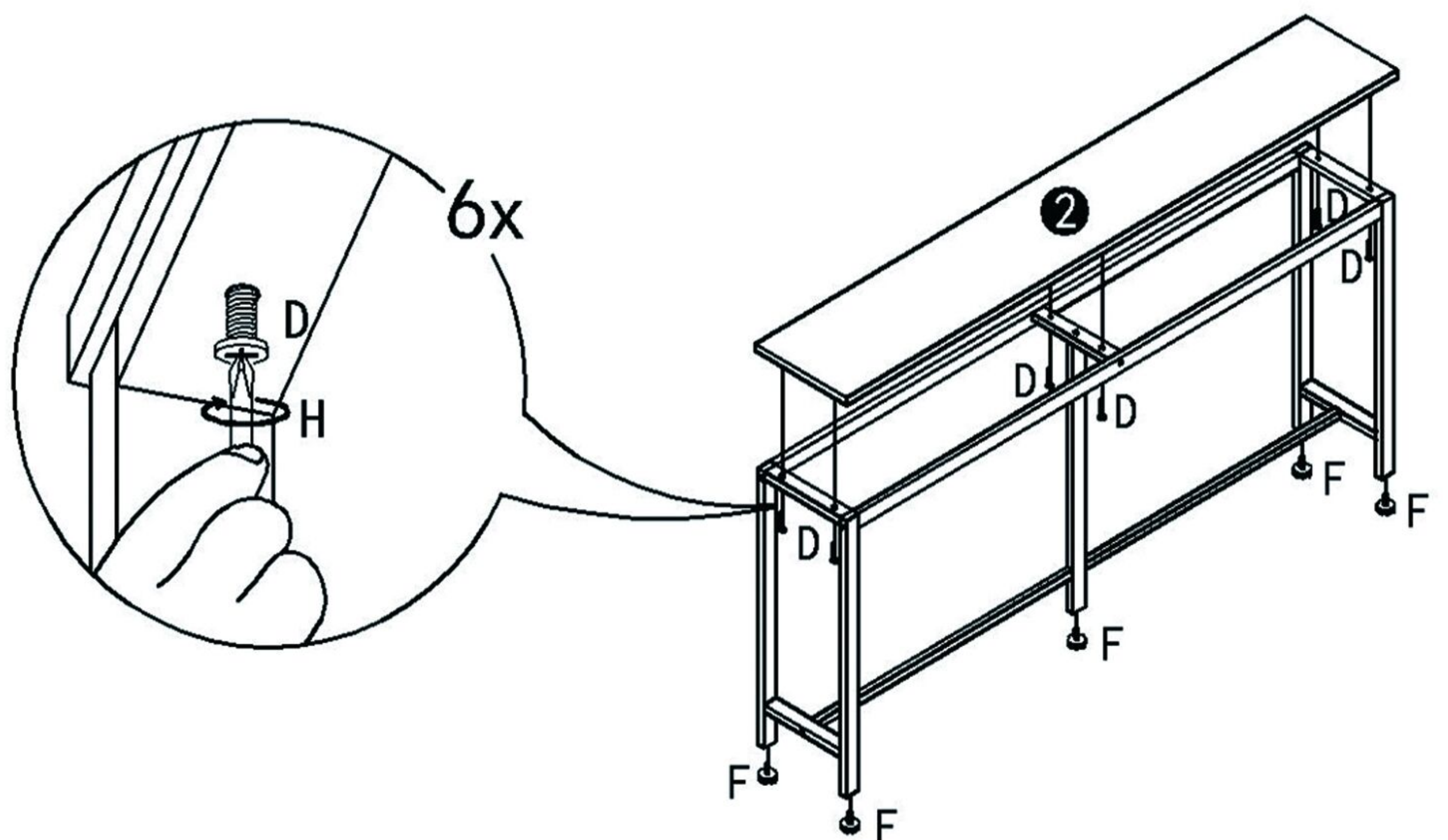
- 4** Install part #6 to part #5 middle support rod with B screws, and then tighten B screws. Connect both sides of #6 to #3 support rod with B screws (don't tighten this screw till all the metal parts are put together)



- 5** Attach part #3 support to left and right metal frame with B screws



- 6** Attach part #2 tabletop to the metal frame with D screws and then screw the #F leg pad to the bottom of the metal legs



- 7** Installation Complete

