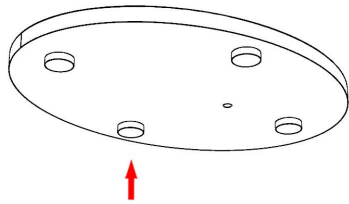
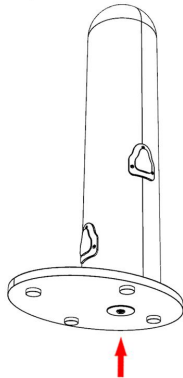


# Cactus Cat Climbing Frame Installation Instructions



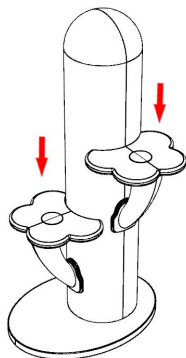
## Step 1

Take the base plate and the 4 non-slip pads. As shown in the diagram, attach the non-slip pads to the bottom of the base plate.



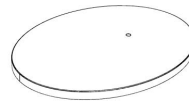
## Step 2

Take the sisal post and the metal washer. Align the post with the center hole on the base plate as shown. Use the M8\*40 inner hex screw to secure the metal washer and sisal post to the base.

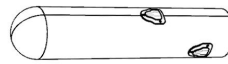


## Step 3

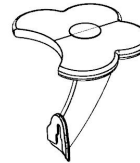
Take the 2 flower platforms and align them with the pre-installed plastic connectors on the sisal post. Push each platform downward onto the connectors until they are securely in place.  
Installation complete!



Base Plate × 1 PC



Sisal Post × 1 PC



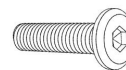
Flower Pedal  
Platforms × 2 PCS



Non-slip Pads × 4 PCS



Metal Washer × 1 PC



M8\*40 Inner H  
ex Screw × 1 PC

## Parts List