

Scan QR Code to Watch Install Video

Application A:

Wrap the 3/4" thread at the wall several times with Plumber Tape. Screw the 3/4" adapter **5** onto the 3/4" pipe at the wall until flush with the wall. Wrap the male end of the 3/4" adapter **5** several times with Plumbers Tape. Screw the tub spout onto the 3/4" adapter until flush with the wall and facing downward.

Application B:

Place rubber washer **7** into 3/4" adapter **5**. Thread the reducer bushing adapter **1** into the 3/4" adapter **5**. Follow same directions for Application A.

Application C:

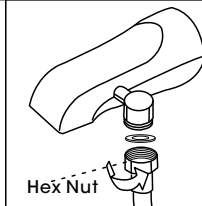
Slip fit for 1/2" copper or PVC pipe. Do not cut the pipe. Make sure pipe is free from burrs and sharp edges by filing or sanding with smooth emery paper. Slide the slip fit adapter **2** over the pipe (threaded end out) snug against the wall. Using the Allen wrench **4** tighten the Allen screw located in the slip fit adapter **2** clockwise until tight - do not overtighten- this may damage the pipe. Wrap the slip fit adapter **2** full times with Plumbers Tape. Using a hack saw or other fine toothed saw or knife, cut the 3/4" adapter **5** at the space between the threads **6** as straight as possible (hold in a vise if possible). Slide the 3/4" adapter over the pipe and thread it onto the slip fit adapter until snug. Cut the pipe if it protrudes from the male end of the 3/4" adapter. Wrap the male end of the 3/4" adapter with Plumbers Tape and screw onto the tub spout until flush with the wall and facing downward.

Application D:

1/2" copper or PVC pipe with threaded fitting on the end. Discard the 3/4" adapter **5** and screw the tub spout directly onto the fitting, first wrapping the fitting with Plumbers Tape. If the pipe protruding from the wall is either too long or too short, then follow the directions for Application C.

Note: Make certain that the tub spout is securely fastened to the pipe or threaded fitting. Test for leaks. More Plumbers Tape may be necessary. If a considerable amount of water exits from the shower in a tub shower combination, a shower volume control may be necessary. If one is needed, Apply a bead of tub tile caulk where the spout meets the wall.

Note: Recommended for use only with wall mounted hand showers.



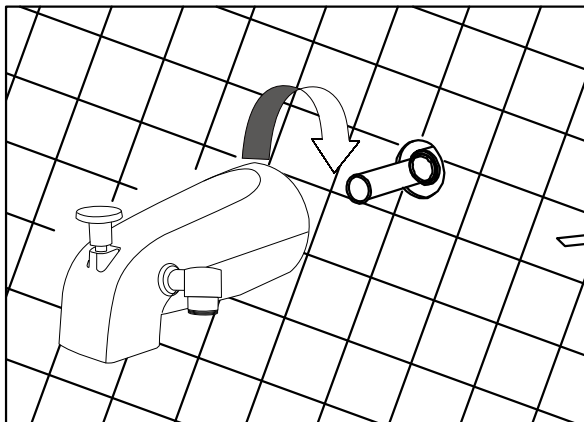
The Diverter outlet on the side of the spout is for a hose connection to operate a Hand Shower. Use Hex Nut end of the shower hose connect the spout diverter outlet.

Before installation

Please check whether the accessories are complete. If there is any missing, contact us at the first time. Please feel free to contact us if you have any questions about the product and the installation.

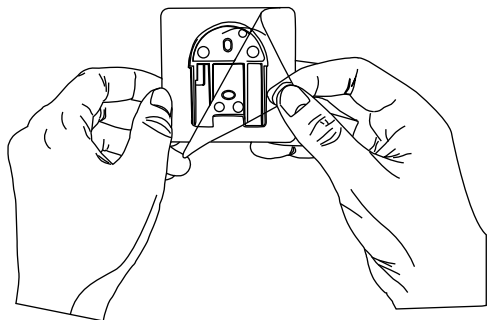
Email : service24houronline@gmail.com

1



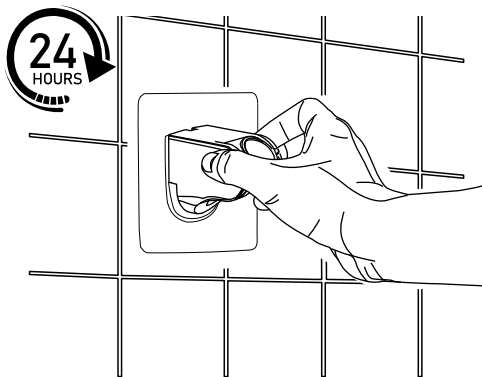
2

Clean and dry the wall, remove the self-adhesive protective film, stick the bracket at a suitable height and press it firmly.



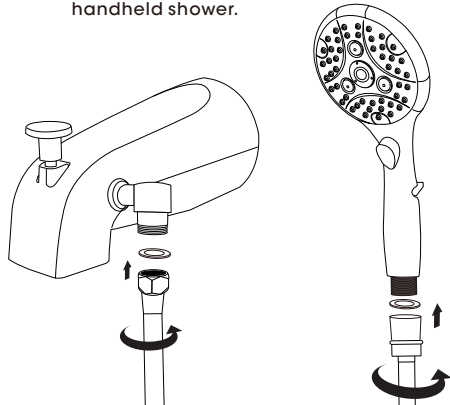
3

Suggested waiting for 24 hours to make it more stable and reliable.



4

Make sure the washers are on both ends of the hose. Hex nut connect tub spout diverter and conical nut connect the handheld shower.



5

