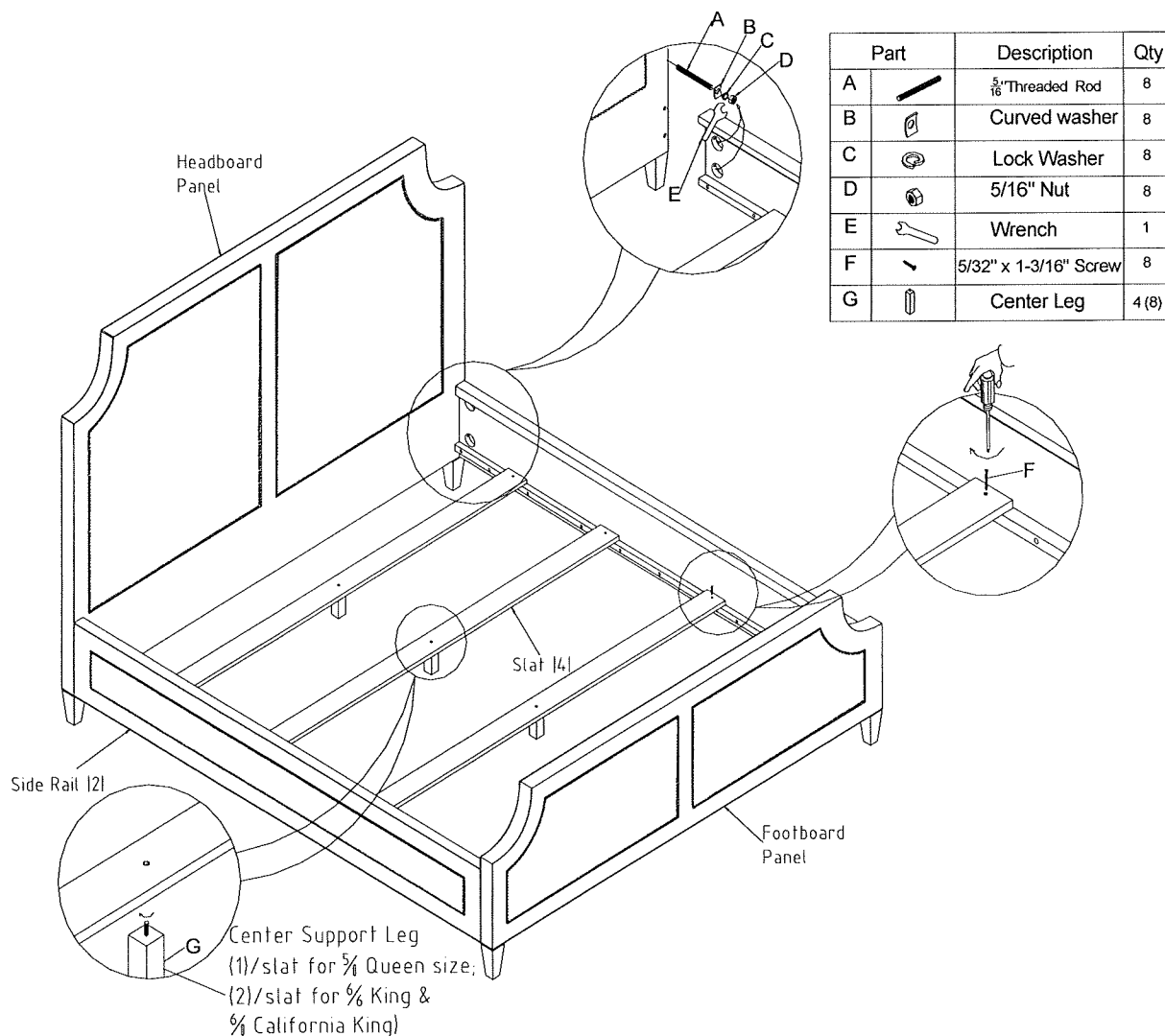


# LEXINGTON®

## HOME BRANDS

### ASSEMBLY INSTRUCTIONS

#### 708-143C/144C/145C Chadwick Upholstered Bed



#### HOW TO ATTACH SIDE RAILS TO HEADBOARD/FOOTBOARD:

\* All needed hardware is located in a hardware bag which should be taped to inside of side rail.

1. Insert Threaded Rod (A) into metal dowel thru open hole on post. Twist clockwise until tight.
2. With both threaded rods in place on one post, and side rail positioned with slots to inside, slide side rail into position over threaded rods.
3. Add Curved Washer (B), Lock Washer (C), and Nut (D) to threaded rod with barrel end of nut towards washers.
4. Tighten nut with Wrench (E) until tight. Repeat process for other three corners.

#### HOW TO ATTACH SLATS TO SIDE RAILS:

1. Insert bolted end of Center Support Leg (G) into bottom end of slat. Rotate clockwise until tight.
2. Adjust leveler on bottom of Center Leg so that Center Leg and leveler sit 1/2" above floor.
3. Place one slat 3" to 5" inward from each end of wood cleats. Place two center slats between two end slats so there is an equal amount of space between all four slats.
4. Secure slats with Wood Screws (F) provided. Note that top side of slat has larger hole.

For additional consumer assistance please contact your Lexington dealer or call our Consumer Services Department at 1-336-474-5300, Monday-Friday, 8-5 Eastern