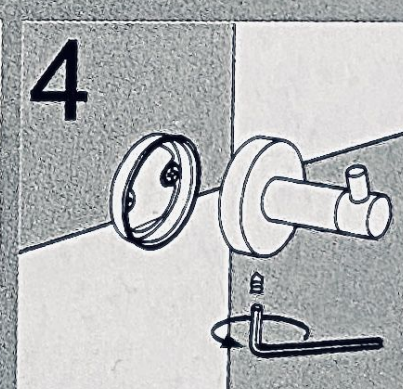
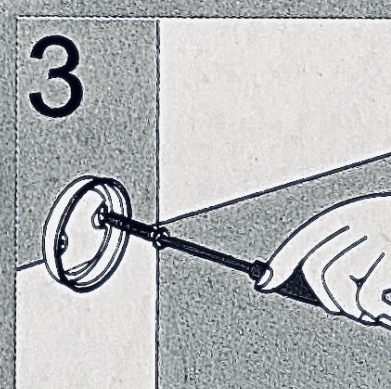
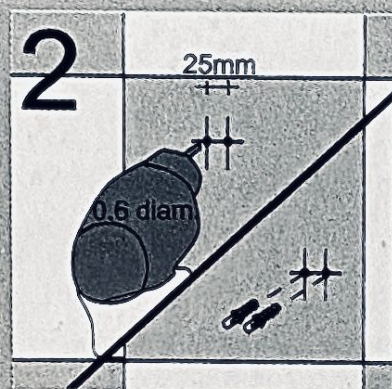
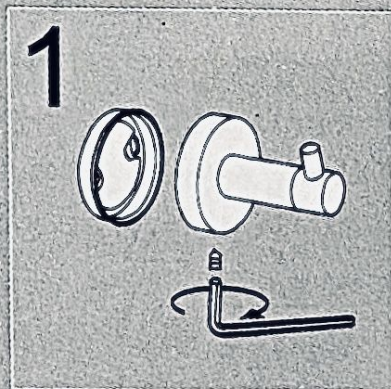
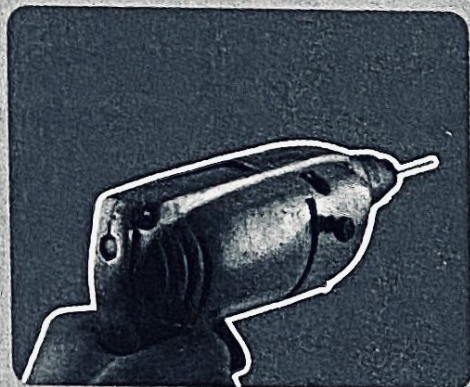


INSTALLATION STEPS:



- EN** Before assembling this item, you must check the wall structure, it has to be flat.
1. Detatch the item with the hex key that is included, separate the base from the rest of the accessory.
 2. Mark the accessory position on the wall, and drill it to make 2 holes. Then insert a rawlplug in each one
 3. Screw on the base to the wall firmly.
 4. Screw on the assessori. RAWLPLUGS AND SCREWS ARE INCLUDED FOR ITS INSTALLATION.