



# STONework BARCODE CARRARA WHITE 12X24 3D POLISHED MARBLE TILE



Transform your walls with the genuine stone craftsmanship of the Stonework Barcode Carrara 12x24 3D Polished Marble Tile. The indisputably luxurious look of gray and white Carrara marble and the subtle play of light and shadow in the peaks and valleys of its grooves adds subtle drama to your space. Enjoy the grandeur of natural stone with this contemporary classic.

## COLORS



Alaska  
White



Black  
Jade



Botticino



Carrara

## SIZES



12x24" Barco



12x24" Flute



12x24" Peel

## SPECIFICATIONS

Colorway  
White with gray veining

Commercial  
Wall Only

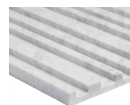
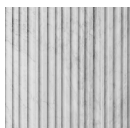
Finish  
Polished

Item Size  
12" x 24"

Material  
Carrara

Residential  
Wall Only

## PRODUCT GALLERY



---

## DETAILED SPECS

### Available Sizes

12x24" Fluted, 12x24" Barcode, 12x24" Peak,  
12x24"

### Coverage

2

### Location

Backsplash, Bathroom, Indoor, Kitchen,  
Outdoor

---

### Look

3D

### Patterns

Rectangle

### Pieces Per Box

2

---

### Recommended Grout Joint

1/8"

### Sq Ft Per Box

4

### Stone Type

Carrara

---

### Style

Contemporary, Craftsman, Modern

### Tile Thickness

Low: 9 mm High: 19 mm

### Tile Use

Backsplash, Bathroom Wall, Kitchen Wall,  
Outdoor Wall, Shower Wall, Wall Tile

---

### Weight

6.2 lbs

---

## DIMENSIONS

---

### Sample Size

3" x 6"

---

## STONWORK



With a nod to the magnificent columns of the ancient world, the Stonework Collection demonstrates simple decorative brilliance in natural stone. This collection is available in 3D-textured patterns in multiple marble options. For a cohesive look, you can easily match your Stonework walls to floor tile made of the same marble.