

WHERE NATURE
MEETS INNOVATION

We have been designing, producing and selling fans for many years.

The blades of our fans are made of natural wood, which is environmentally friendly and durable.

Our fans not only circulate indoor air but also serve as a decoration to your home.

Air5 Series



Technical Specifications

Ceiling Fan Light

Input: AC120V-60Hz

Power: Fan 55W Light 24W

Size: Φ72 Inch



WARNING



ON/OFF switch



Dimmable switch

Turn power off before installation, inspection or removal.
Do not touch the light when it is on or hot.
In case of any problem with the fan light, turn power off,
neither attempt to repair, unless you're a qualified technician.
Do not expose to water or rain.

MADE IN CHINA



Packing List



Fan Motor Assembly x 1

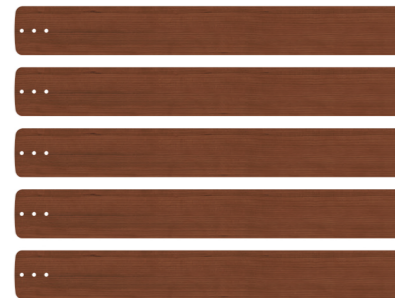


Ceiling Light Kit x 1

10" Downrod x 1



24" Downrod x 1



Fan Blade x 5



Remote Controller x 1



Fan Controller x 1



Ceiling Light Baseplate x 1



Hanger Bracket x 1



Canopy x 1



Coupling Cover x 1



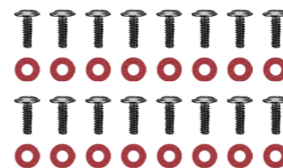
Fan Blade Arm x 5



Extension Cord for Motor x 1
16.53 Inch



Extension Cord for Light x 1
16.53 Inch



Screws with Washer
of Fan Blade x 16



Screws with Washer of
Hanger Bracket
(choose one of two ways)



Terminal x 3



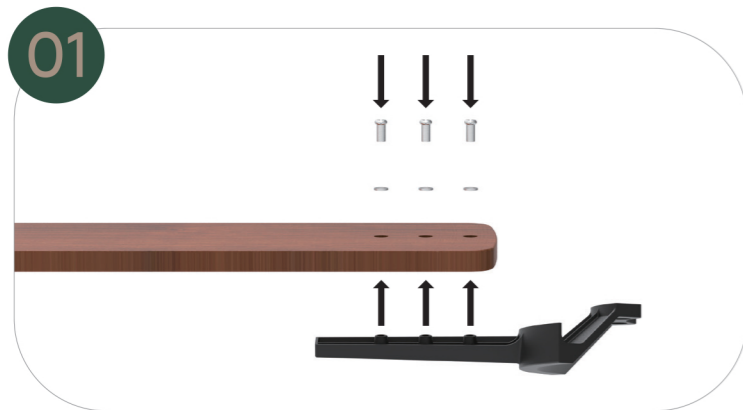
Balancing Kit of
Dynamic Blade



Screws x 4



Screws of Fan
Blade Arm x 11



Assemble the fan blades to the blade arms.



Fix the fan blades to the fan motor.



Fix two screws.



Secure hanger bracket.



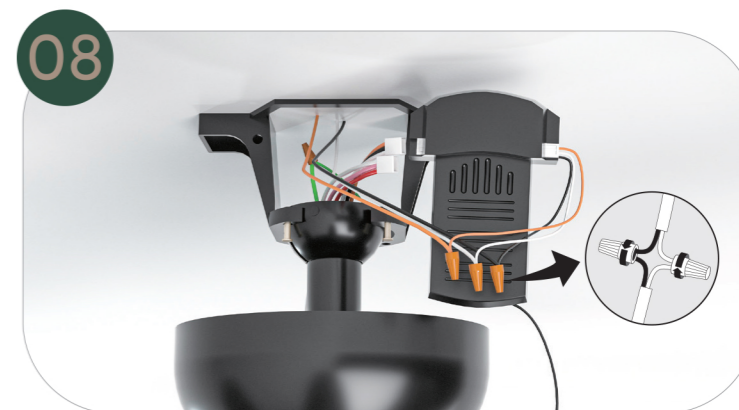
Install the ceiling light baseplate.



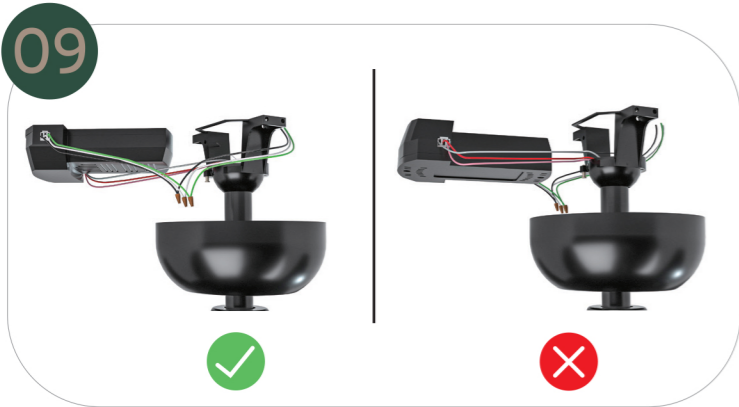
Install the downrod assembly the canopy and the coupling cover in turn.



Hang the assembled fan on the hanger bracket.



Connect the fan controller.



Put the fan controller into the hanger bracket.



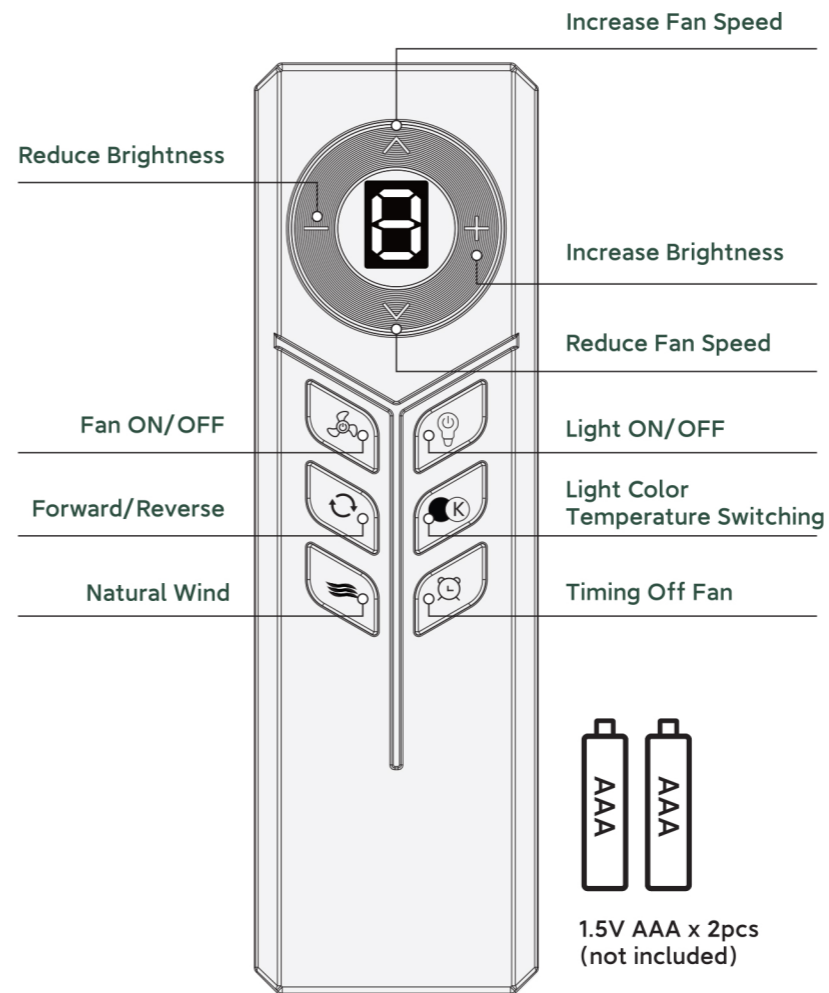
Connect the ceiling light fixture.



Secure the canopy.



Rotate the ceiling light clockwise and finish installation.



Remote Controller Description

KINDLY REMINDERS:

If the remote control cannot control the fan, please follow the steps below to troubleshoot:

1. Ensure that the battery is correctly fixed and has plenty of charge. Make sure that the positive and negative poles of the battery are connected in the right order. Low battery voltage can decrease the range and sensitivity of the remote. If the battery voltage is low or run out of use, please replace it.

2. Try re-pairing the remote

Turn "ON" the supply power within 10 seconds and press the "🌀" button for 5 seconds. If there is a long sound "beep", it means the pairing is successful and it can work normally. If pairing fails, turn off the power. Wait for one minute, then try the above operation again. (PS: Re-pairing is not accepted after turn "ON" the supply power for 10 seconds.)

3. Please take out the battery from the remote when leaving unused for long time.

4. When installing the fan, make sure the cover of the fan does not press the antenna (or other wire), it is easy to breakdown the wire and short-circuited.

5. If the above does not solve the problem, please contact our customer service team within your order and they will get back to you within 24 hours.