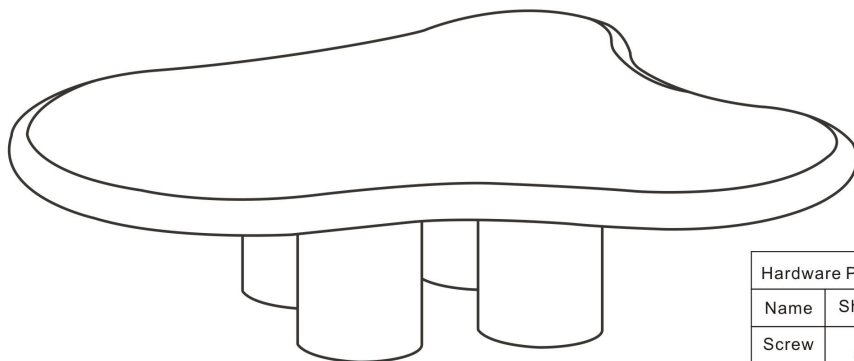

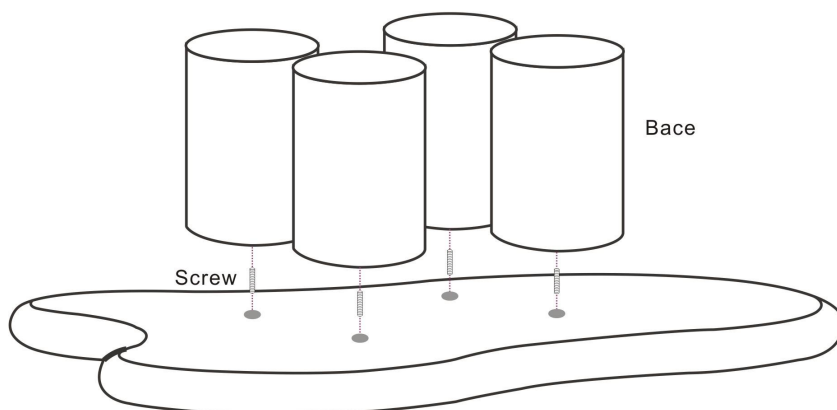


## Installation & assembly

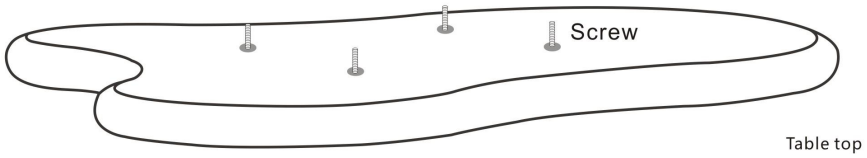


Hardware Pack		
Name	Shape	QTY
Screw		4

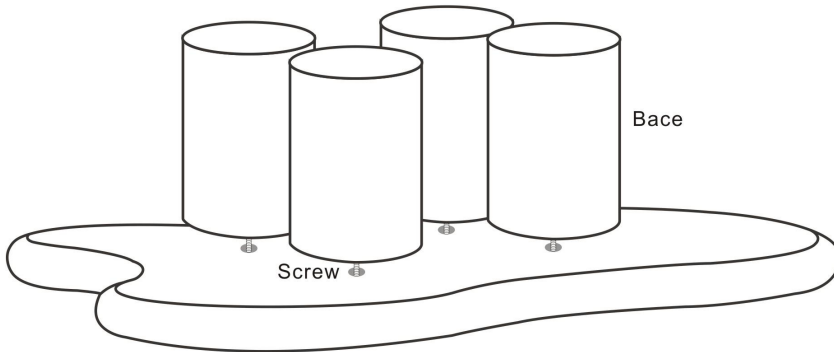
Turn the table top over and screw the screws into the holes in the bottom of the table top and then into the holes in the base.



- 1 Turn the tabletop over and screw the screws into the holes in the bottom of the tabletop, halfway down. Be careful not to screw in more than halfway.



- 2 Align each of the 4 legs with their respective screw holes, then rotate each leg and tighten until they cannot be rotated further.



- 3 Completing the Installation

