

VIVOHOME

# THANK YOU!

## NOTE:

To continuously improve its products, VIVOHOME reserves the right to modify this information without prior notification.

For any questions regarding assembly, please watch the video on the product page or contact our customer service. Our customer service will gladly assist you with any additional questions, comments, or concerns.

Thank you for using VIVOHOME products in your home!

Thank You for Purchasing from

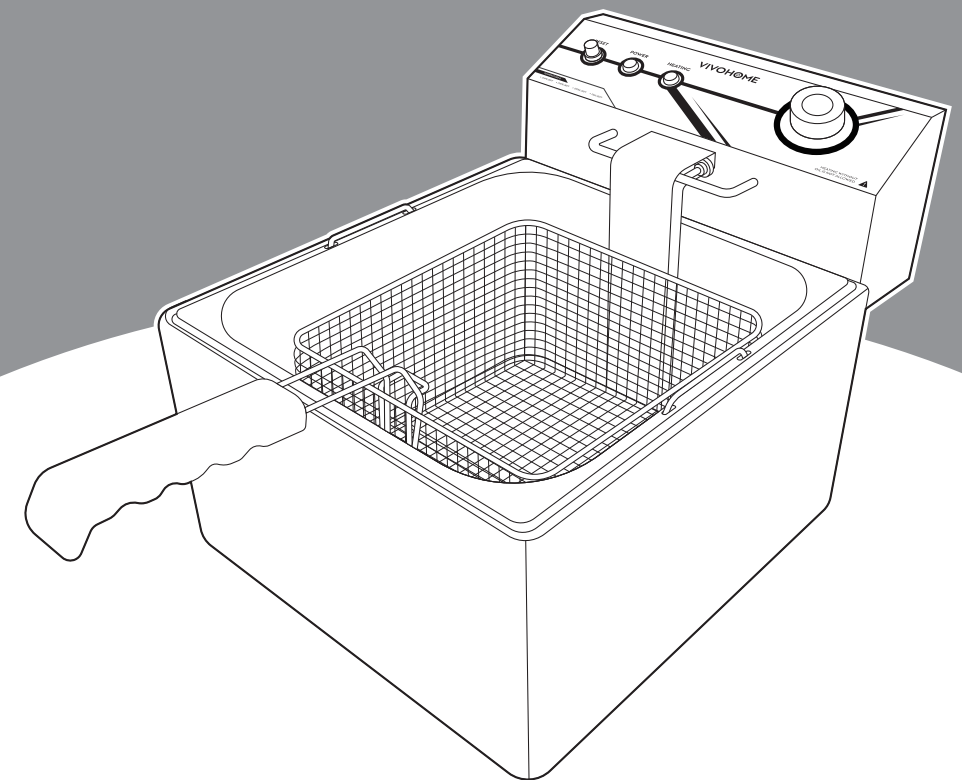
VIVOHOME

Made in China

VIVOHOME

# HOW-TO

## USER MANUAL



## Electric Deep Fryer

Assembly is EASY!

**WE WANT  
YOU TO  
ENJOY LIFE  
AT HOME**

GO TO THE PRODUCT LISTING PAGE  
FOR AN INSTRUCTIONAL VIDEO!

## CONTENTS

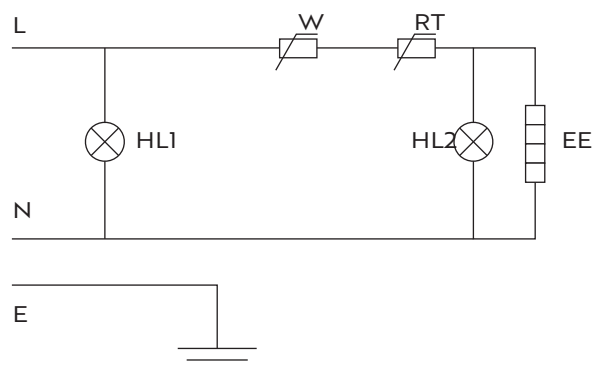
Basic Parameters .....	1
Circuit Diagram .....	1
Instructions .....	2
Troubleshooting .....	4
Safety Precautions .....	5
Warranty .....	5

## SECTION A Basic Parameters



Item Name	Electric Deep Fryer
Item Number	VH1597
Voltage	AC110V
Frequency	50Hz-60Hz
Max Power	1.7kW

## SECTION B Circuit Diagram



L - Live Wire  
 N - Neutral Wire  
 E - Earth Wire  
 HL1 - Power Indicator  
 HL2 - Heating Indicator  
 EE - Heating Tube  
 W - Temperature Limiter  
 RT - Thermostat

## SECTION C Instructions



1. Ensure that the power supply is reliable and correctly installed.
2. Maintain the oil level between the **MIN** and **MAX** lines on the oil pan during use.
  - 1) Align both knobs to the **OFF** position and insert the power cord plug into a suitable socket. The green **POWER** indicator light will turn on, indicating that the machine is receiving power.
  - 2) Turn the temperature knob clockwise to set the desired temperature. The red **HEATING** indicator light will turn on, showing that the electric heater is active and the oil is heating.
  - 3) The thermostat will automatically cut off heating when the oil reaches the set temperature. The red **HEATING** indicator light will turn off, indicating that heating has stopped.
  - 4) When the temperature drops slightly, the thermostat will signal the heater to resume heating. The red **HEATING** indicator light will turn on, and the oil temperature will rise.
  - 5) The machine will continuously cycle heating to maintain the oil temperature within the selected range.
3. The cover helps keep the device warm and clean. Ensure the cover is dry before placing it on the machine to prevent water from dripping into the hot oil, which could cause splashing and potential injury.
4. Use the enclosed special basket for frying small pieces of food. The basket features a hanger and a handle for convenience. Place the basket into the oil while cooking and, after frying, lift and hang it on the machine to drain the oil back into the pot. For large food items, place them directly into the pot.
5. After cooking, turn the temperature knob to the **OFF** position and unplug the machine for safety.
6. How to pour the oil out of the pot:
  - Allow the oil to cool to room temperature before draining.
  - Remove the basket and back plate.
  - Disconnect the power supply and either turn over the control box (ensuring the electric heating tube is upright) or remove the control box and place it in a dry location.
  - Once these steps are completed, you can safely remove the oil pot for cleaning.

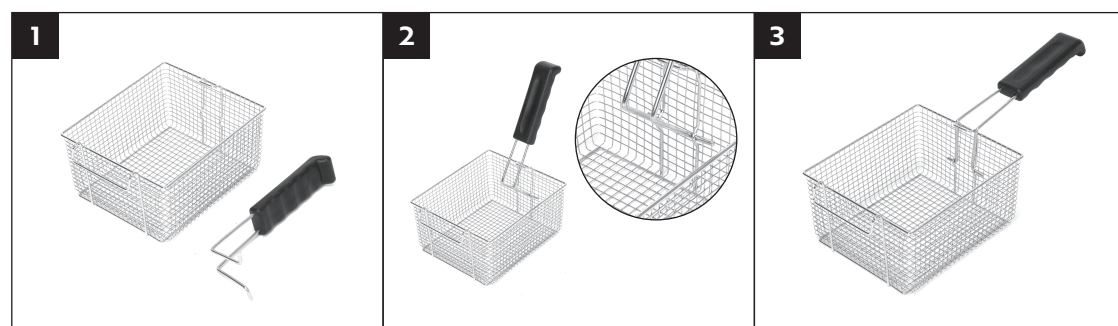
7. Regularly clean the oil, grime, and residue from the electric heating tube.
8. The back plate is designed to protect the electric heating tube. Ensure it is properly installed in the oil pot during use.
9. Every fryer with a temperature range of 140 to 392°F is equipped with a **RESET** protection button for overheating. If the temperature exceeds the pre-set limit (460°F), the temperature limiter will cut off power to protect the machine.

1) Users may find the temperature limiter activates in the following situation: While the power connection is normal and the green **POWER** indicator light is on, if the temperature knob is rotated to any specific temperature but the red **HEATING** indicator light does not turn on and the temperature does not rise. At this time, twist the black **RESET** lid on the panel in a counter-clockwise direction and open it manually. If a small black button inside sticks out about 5mm, it means the temperature limiter has already been activated.

#### 2) Resetting the Temperature Limiter:

- Wait 10 minutes if the temperature is still above the pre-set limit.
- If the **RESET** lid has not been opened, twist it counter-clockwise and open it manually.
- Press the small black button inside the **RESET** lid to reset the limiter.
- Replace the **RESET** lid and use the machine normally.

## Baseket Handle Installation



## SECTION D

# Troubleshooting



Problem	Cause	Solution
1. Connect the power cord to the socket, but the green indicator light is not on and the machine is not working.	1. The machine is not connected to power.	1. Fasten the power cord and ensure the socket is powered on.
	2. The fuse of the socket connected by the user is blown or the socket is damaged.	2. Replace a fuse (>16A) for the socket, or replace a suitable 16A socket.
2. The red and green indicator lights are on at the same time, but the oil temperature does not rise.	1. The wiring of the electric heating tube is loose.	1. Tighten the connecting screw of the electric heating tube.
	2. The electric heating tube is burnt out.	2. Replace the heating tube.
3. The red indicator light is always on, and the oil temperature rise cannot be controlled.	1. The thermostat does not work.	1. Replace the thermostat.
4. The temperature is controlled normally, but the red indicator light is not on.	1. The indicator light is burned out.	1. Replace the indicator light.
5. The green indicator light is on, but the red indicator light is not on and the temperature does not rise even if it is set to any temperature.	1. The temperature limiter has already worked for overheating protection.	1. Reset the temperature limiter. (Refer to Instruction No.10)



## SECTION E

# Safety Precautions



1. Ensure that the machine operates at the rated voltage specified.
  2. Connect the machine to a 16A socket.
  3. Do not use extension cables with this machine.
  4. Locate the grounding bolt at the back of the machine. Attach a copper core wire with a minimum cross-section of 2.5mm<sup>2</sup> to a grounding wire that meets safety standards.
  5. Before use, verify that all wiring connections are secure, the operating voltage is correct, and the outlet is properly grounded. Ensure the machine's shell is securely attached to guarantee safe operation.
- Note: Proper adherence to these instructions is crucial for safe operation, as this machine poses potential hazards. Thank you for your cooperation.

## SECTION F

# Warranty



The VIVOHOME warranty program is our commitment to you. We are committed to providing you with a high-quality product that meets your needs and expectations. To demonstrate our confidence in the durability and performance of our products, we offer the following warranty.

## Warranty Coverage

This warranty program applies to any orders, purchases, receipts, or use of any products sold by VIVOHOME and is valid for a period of 1 year from the date of purchase. However, please note that this warranty period is only valid for the original order. If you receive a replacement order during the warranty period, it will not include a separate warranty period.

## Warranty Exclusions

This warranty does not cover damage resulting from misuse, accident, unauthorized modification, or any other circumstances not directly related to the manufacturing and design of the product, including but not limited to:

- Parts lost during use.
- Normal wear and tear of products or parts.
- Incorrect installation (such as using the wrong voltage) or assembly.
- Exceeding the bearing capacity of the product.
- Use under extremely harsh conditions.
- Improper cleaning or maintenance.
- Damage caused by any reason other than the intended use of the product.
- Indirect loss or damage caused by the product.

## How to Make a Warranty Claim

If you find any defects that affect the use of the product or if the product stops working and cannot be repaired during the warranty period, please contact our customer service team at our email or via Amazon & app's direct messaging service as soon as possible. Provide the following information to expedite the process:

- Order number
- Images and/or videos illustrating the issue
- A detailed description of the problem

VIVOHOME will provide technical support, replacement, refund, or other solutions based on the nature of the issue. If you wish to return the original package for any reason, please contact us for confirmation before proceeding. You can expect to receive a response within 48 hours.

Thank you for choosing VIVOHOME. We are committed to ensuring the quality and satisfaction of your purchase. If you have any questions or need assistance, please do not hesitate to contact our customer service team.