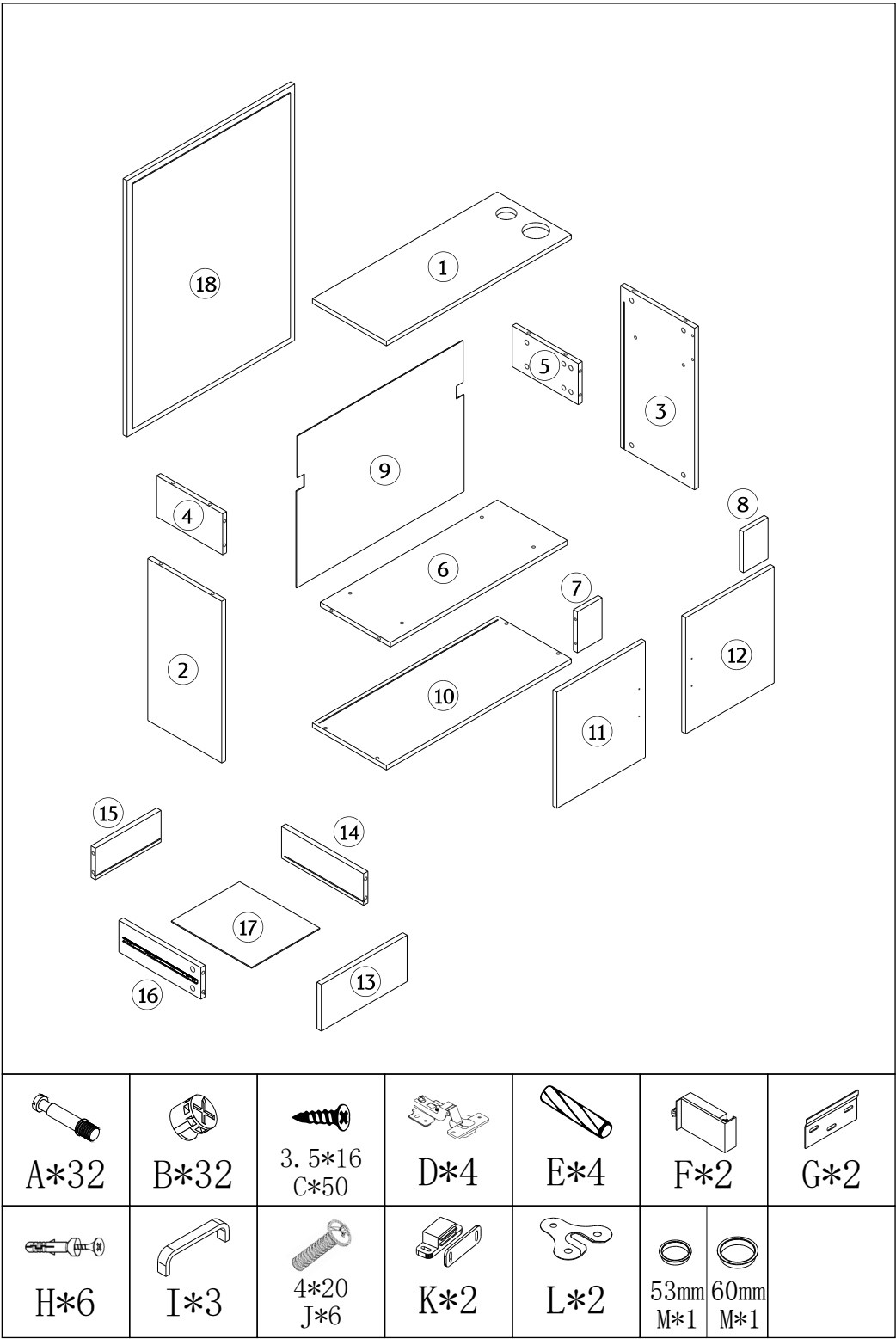
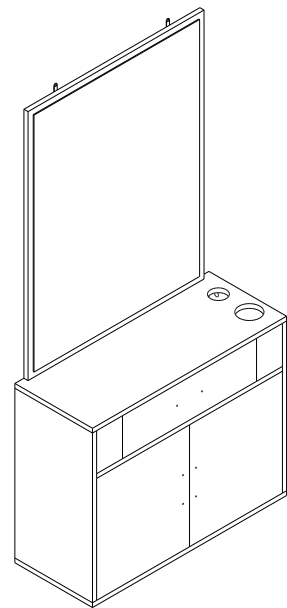
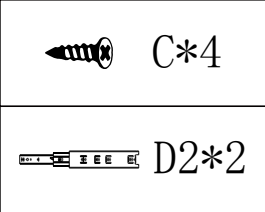
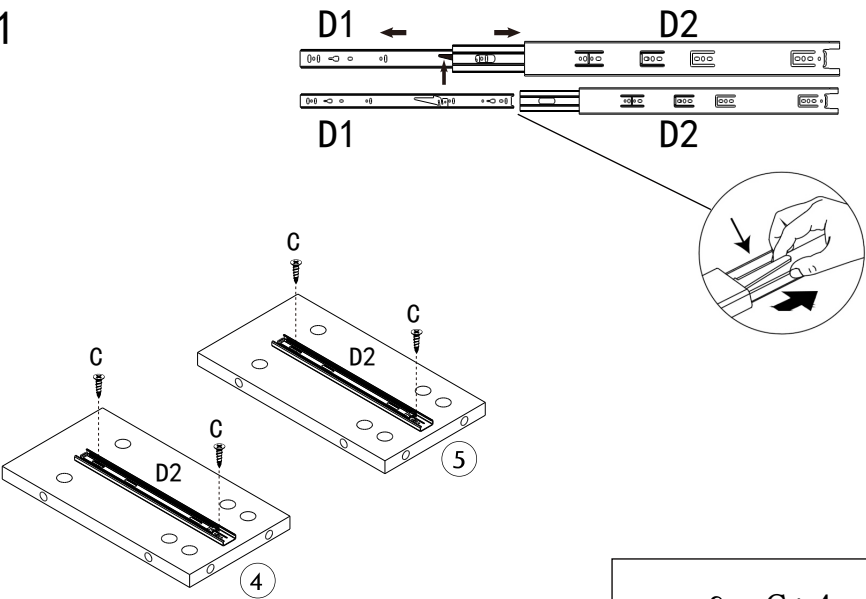


# ASSEMBLY INSTRUCTION

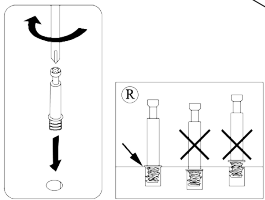
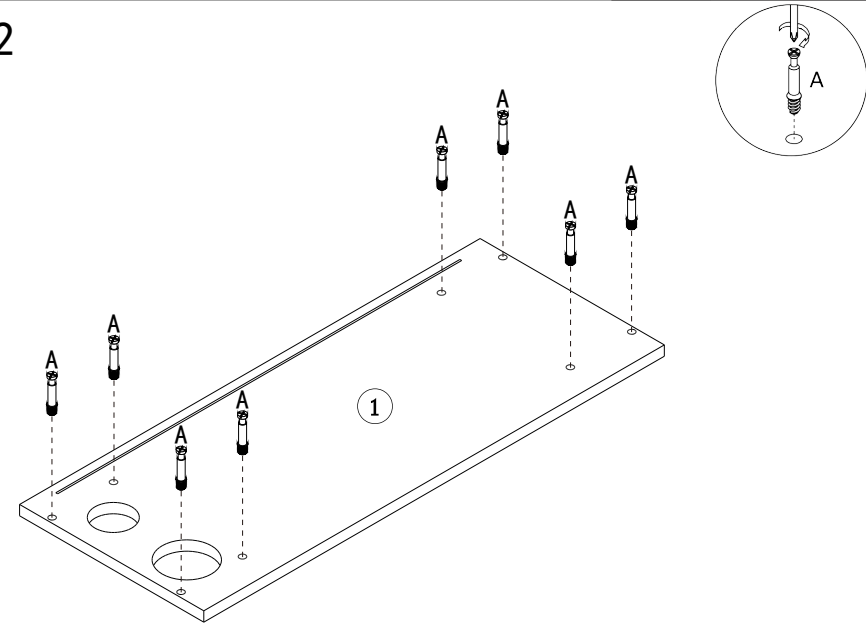
- Please follow the instructions to assemble the items correctly.
- Please ensure the safety of the glass when assembling.
- Do not make the screws too loose or too tight.
- As shown in the figure, Insert the screw into the hole.  
The arrow in the picture, Then rotate 90° or 180° clockwise.
- The accessory bag contains some small accessories, which should be kept away from children.
- Ensure that the product enjoys a 90-day product warranty.  
If you have any questions, Help or support, please contact product customer service. We will further send you effective information and related solutions.
- The remaining parts are spare parts.



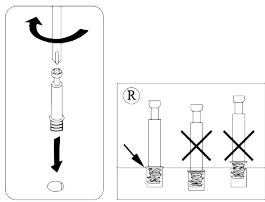
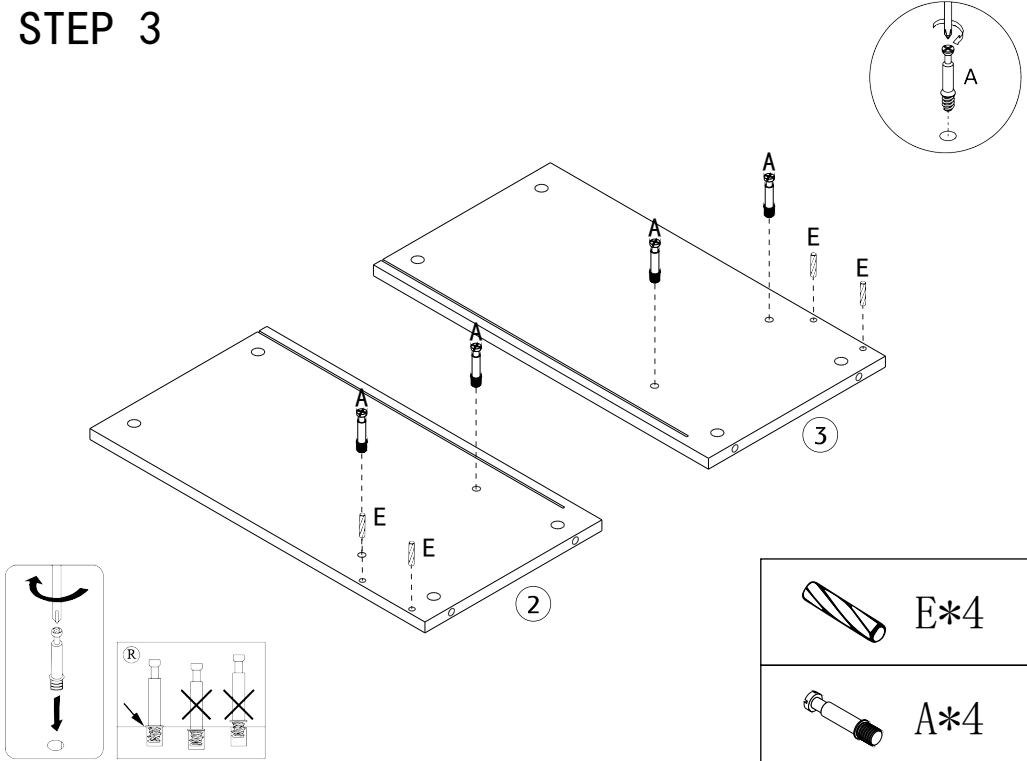
STEP 1



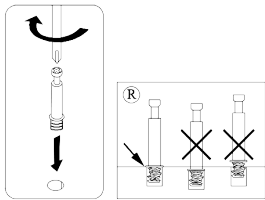
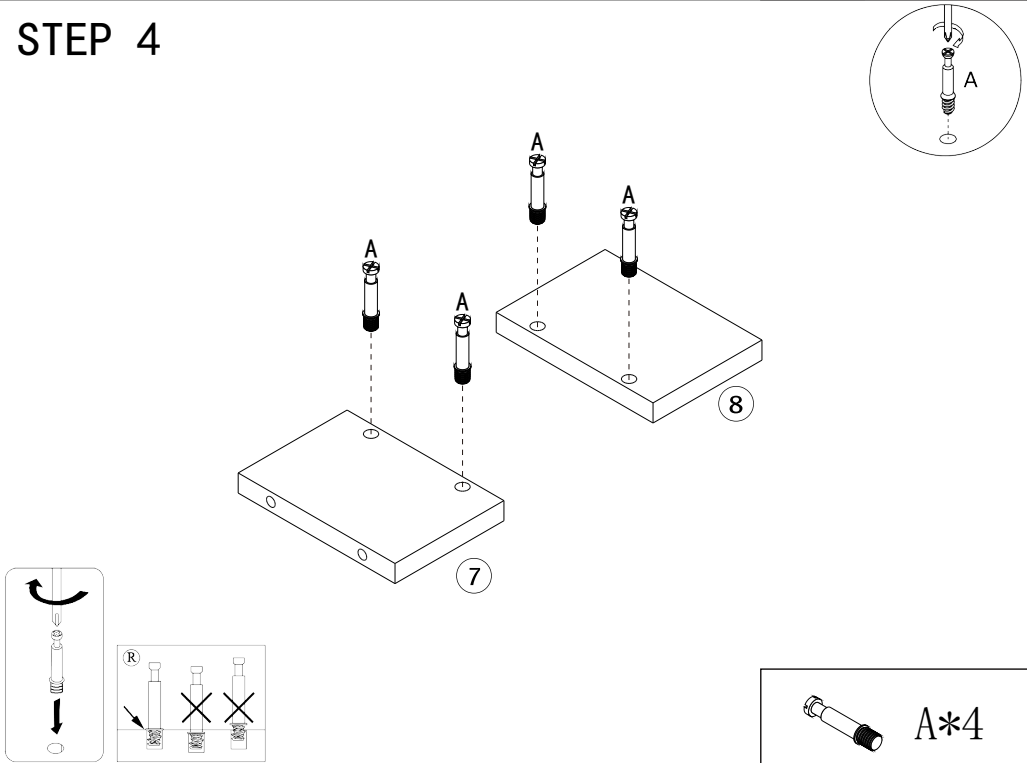
STEP 2



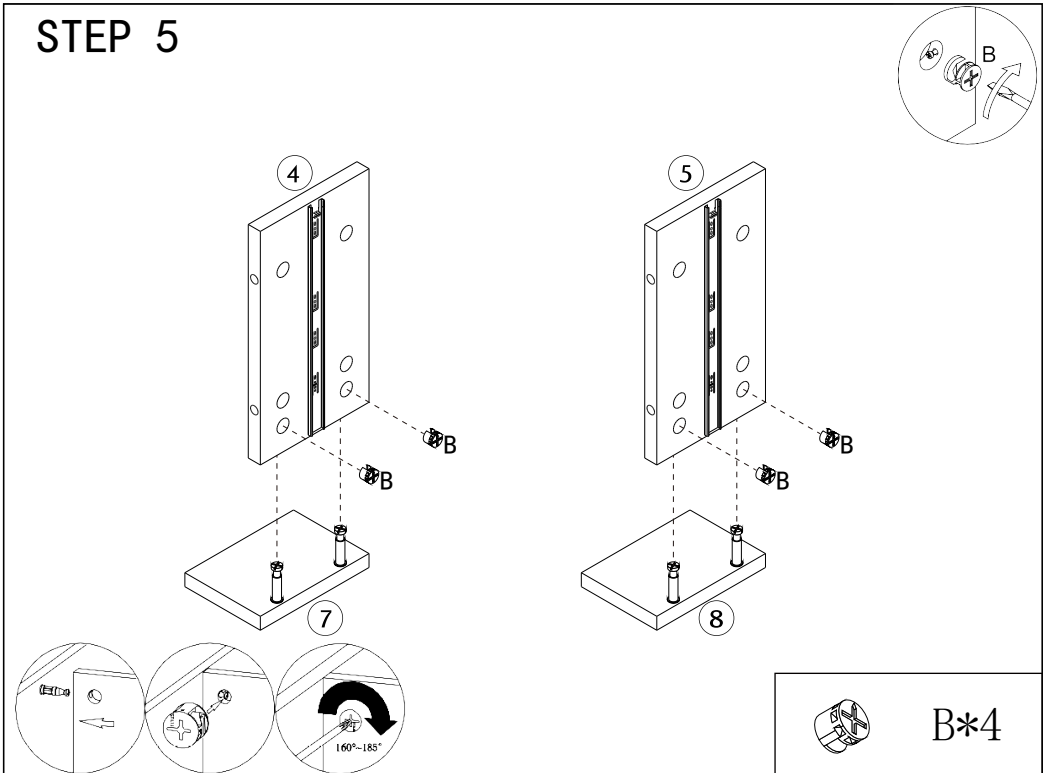
STEP 3



STEP 4

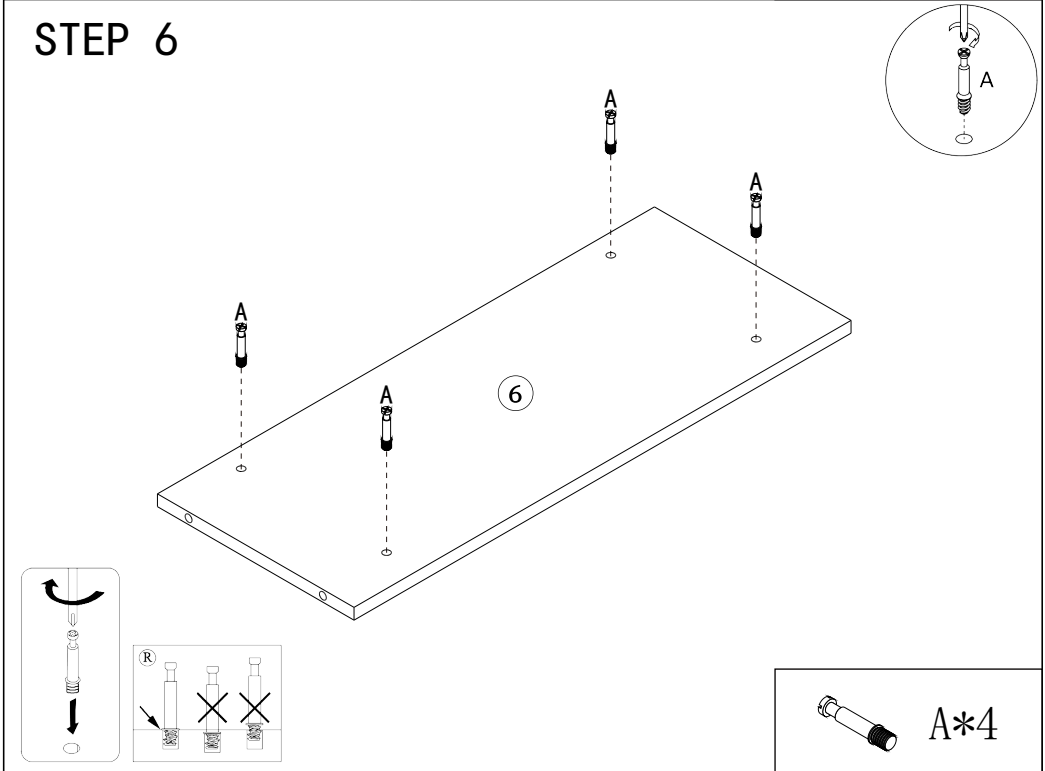


STEP 5



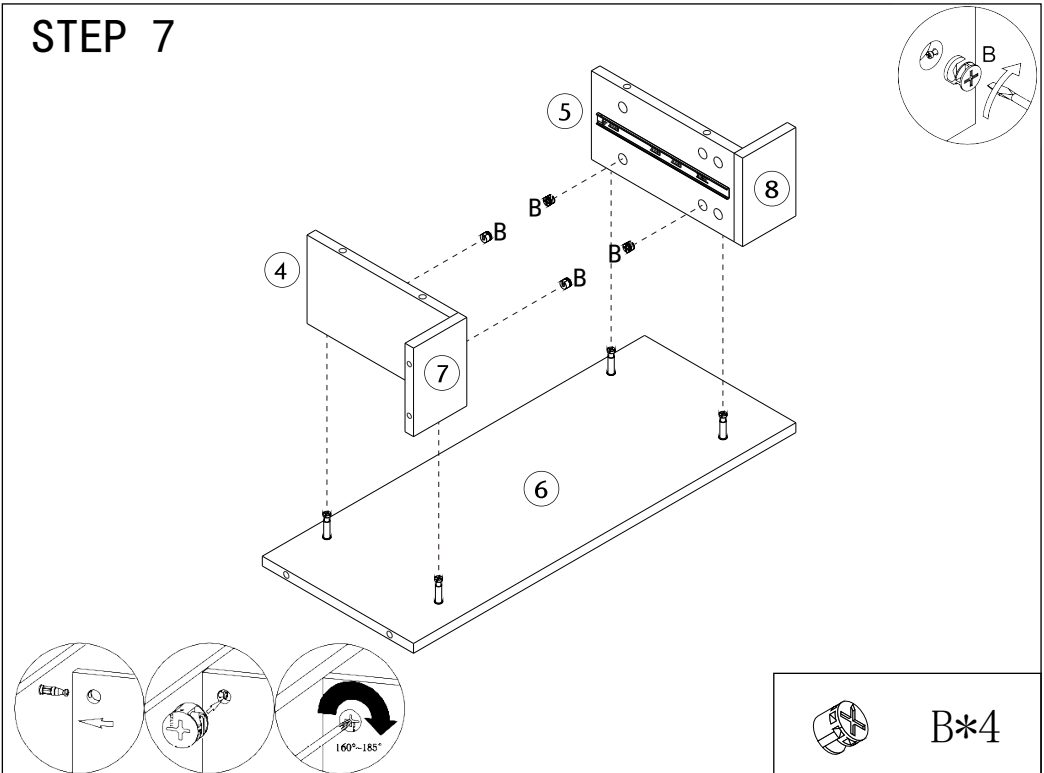
B\*4

STEP 6



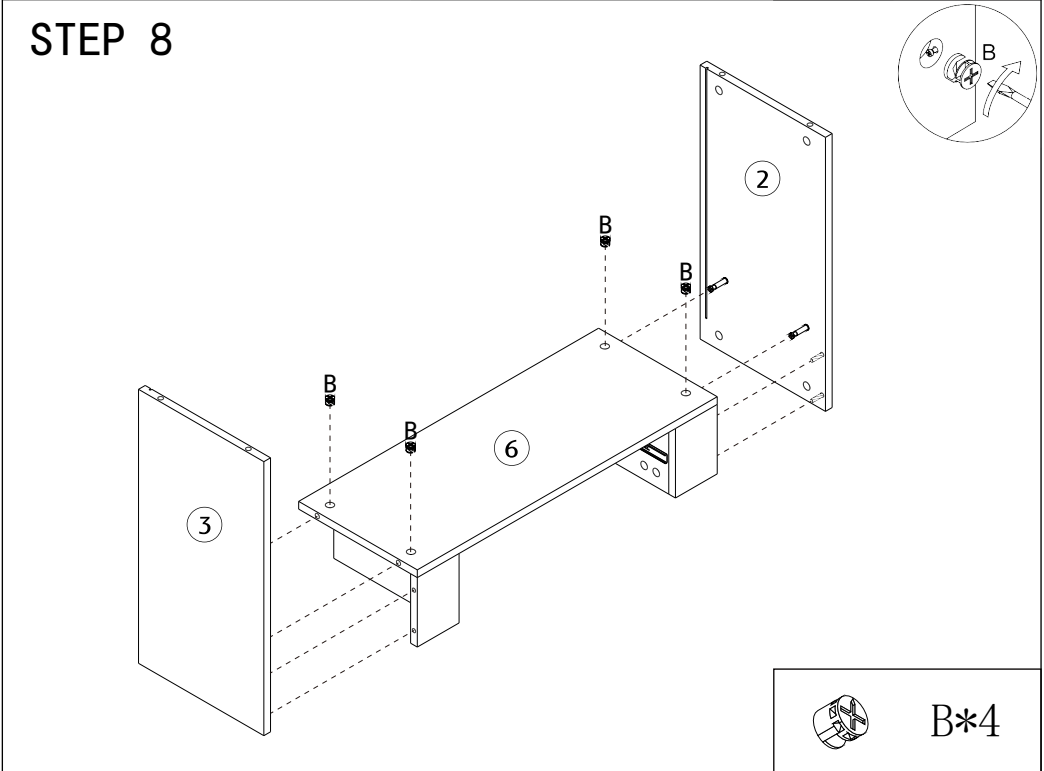
A\*4

STEP 7



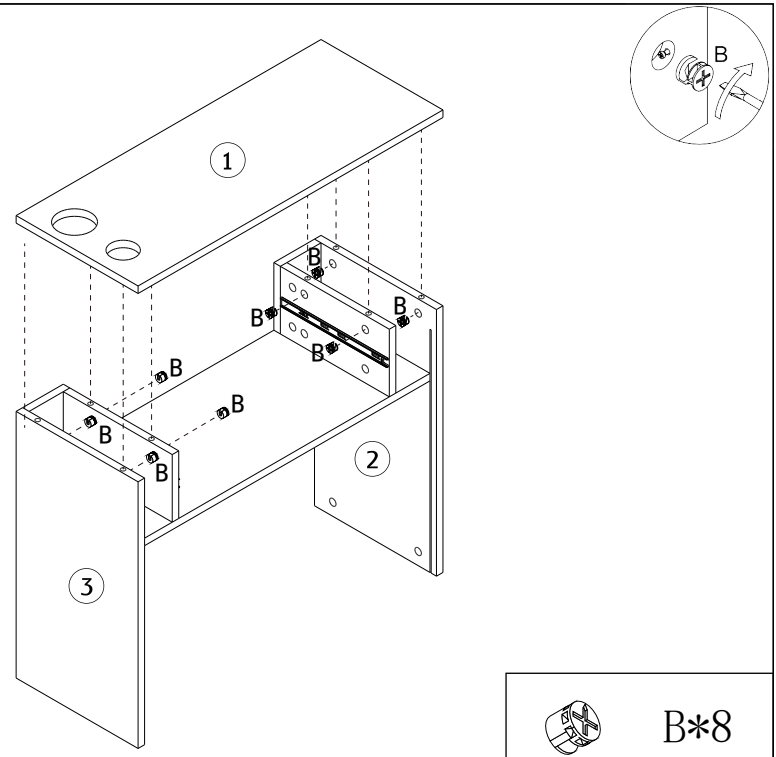
B\*4

STEP 8

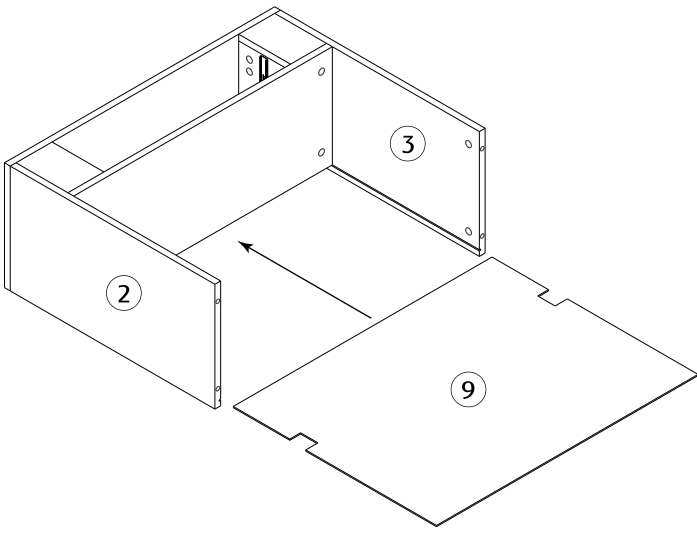


B\*4

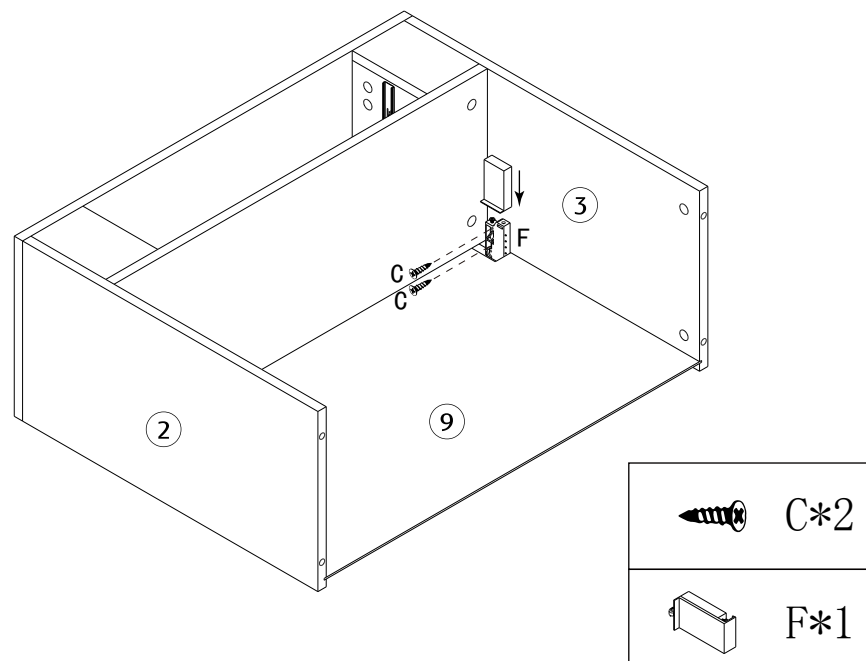
STEP 9



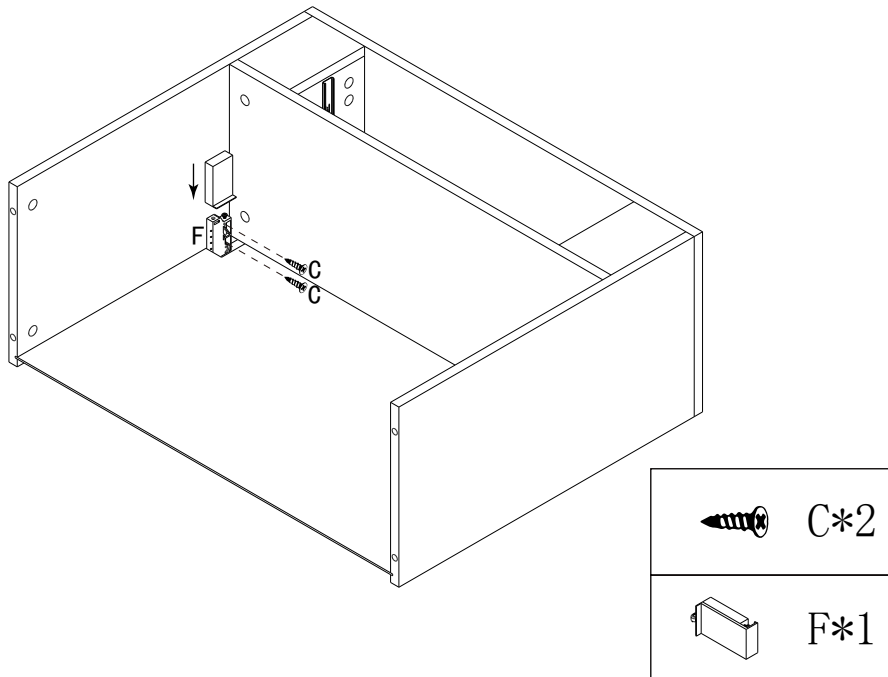
STEP 10



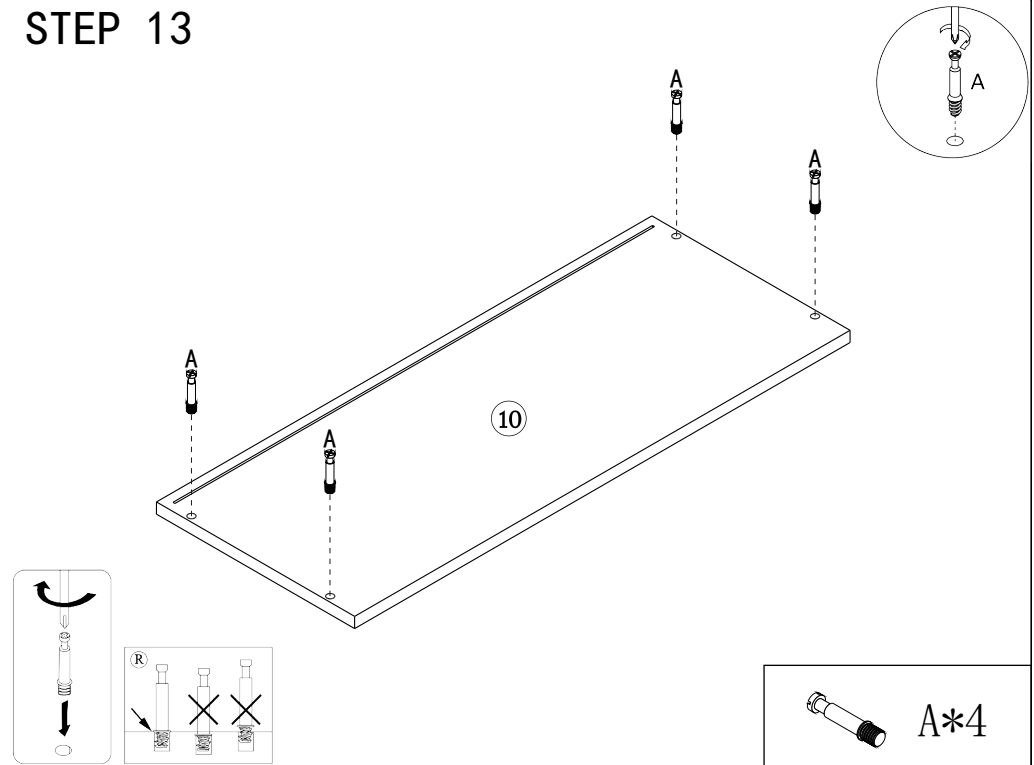
STEP 11



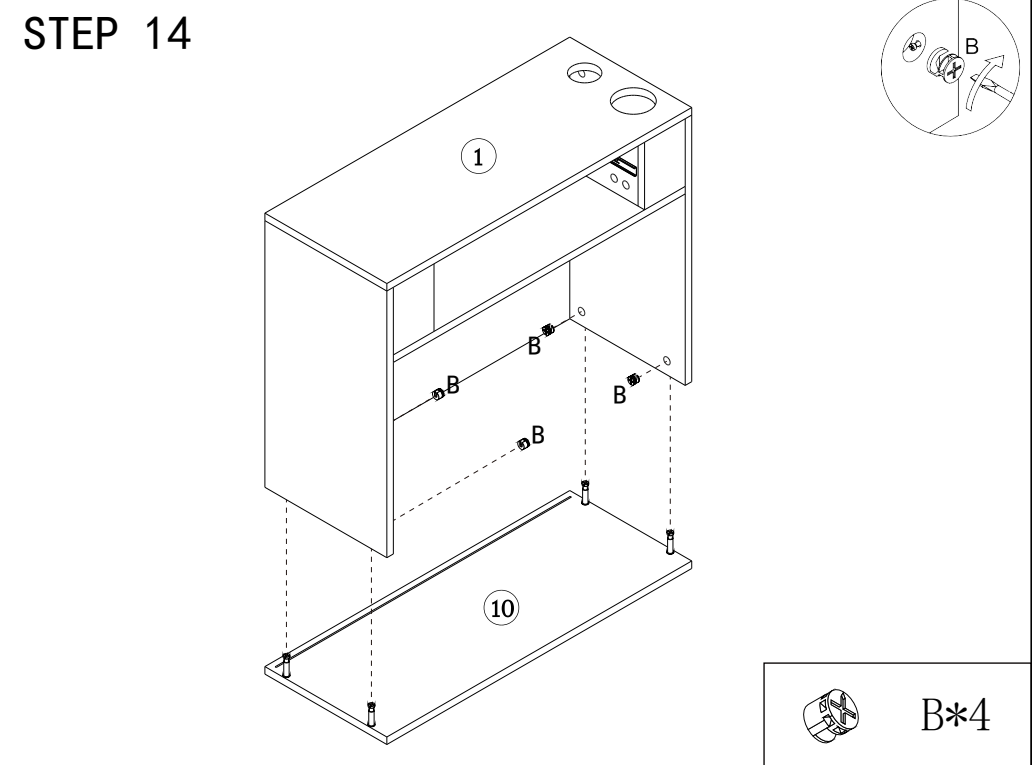
STEP 12



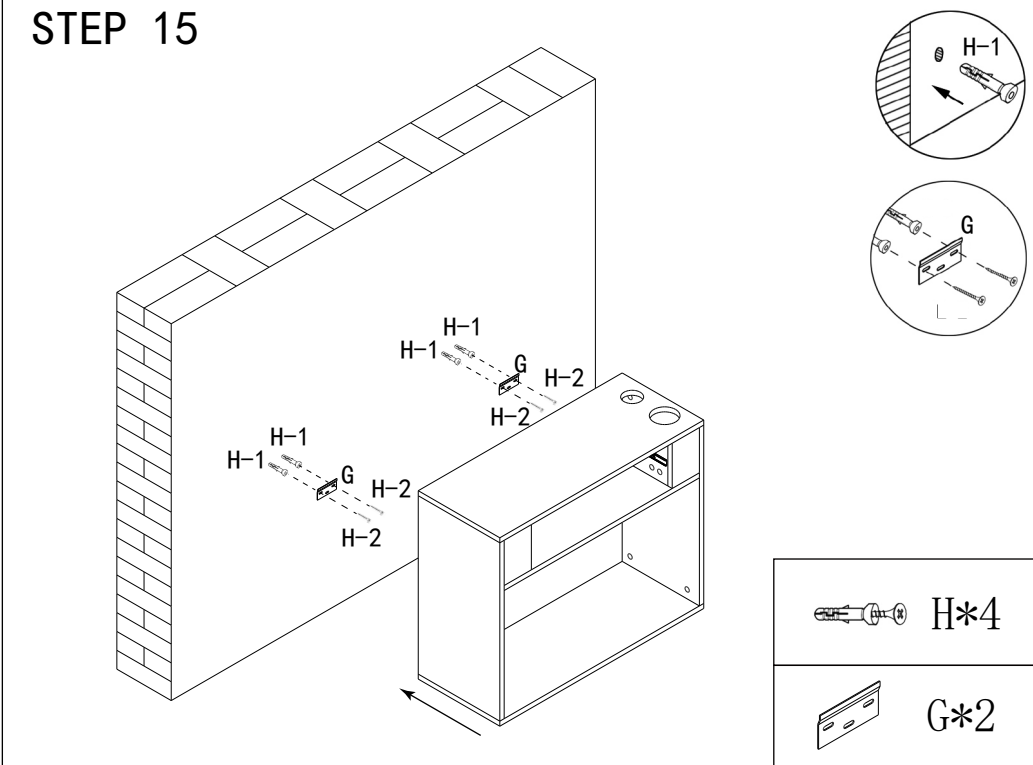
STEP 13



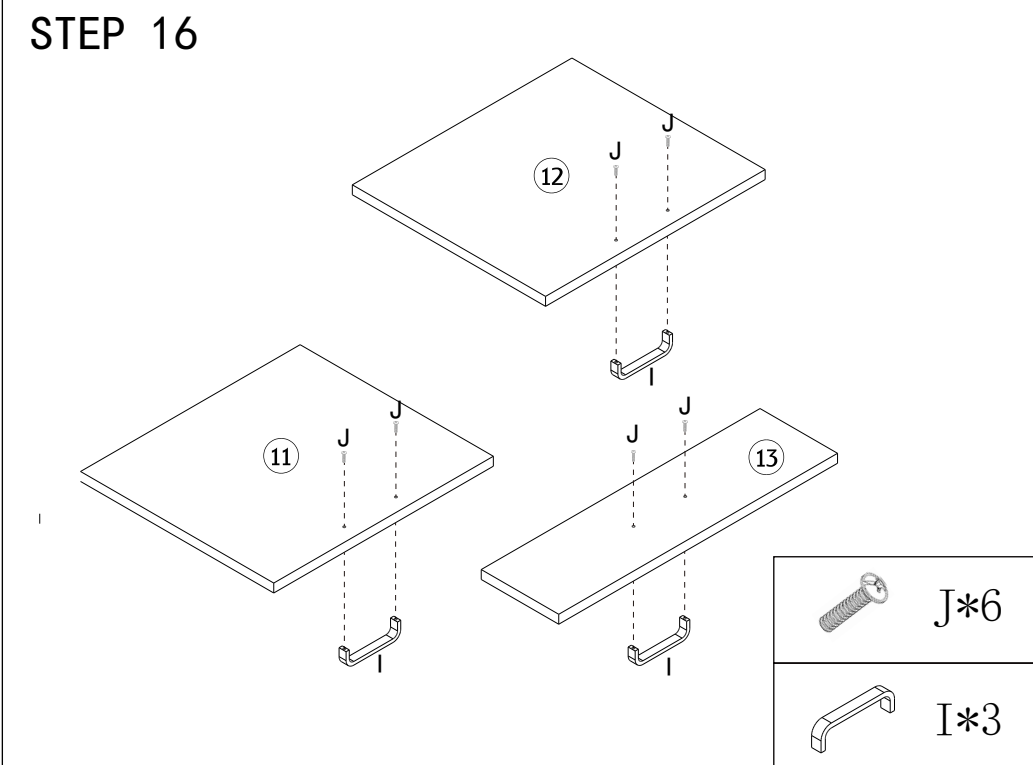
STEP 14



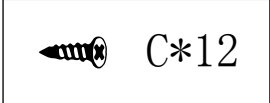
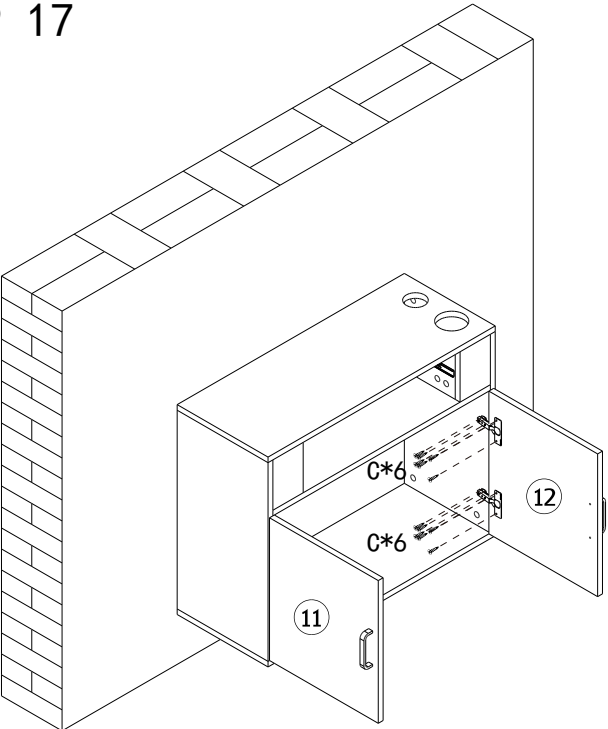
STEP 15



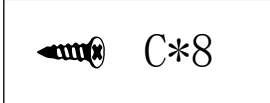
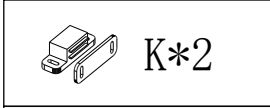
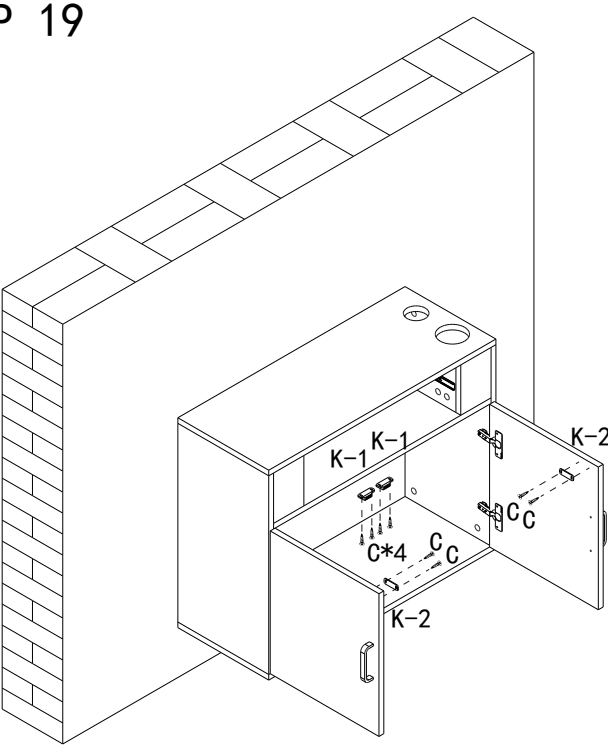
STEP 16



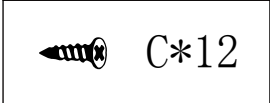
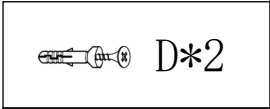
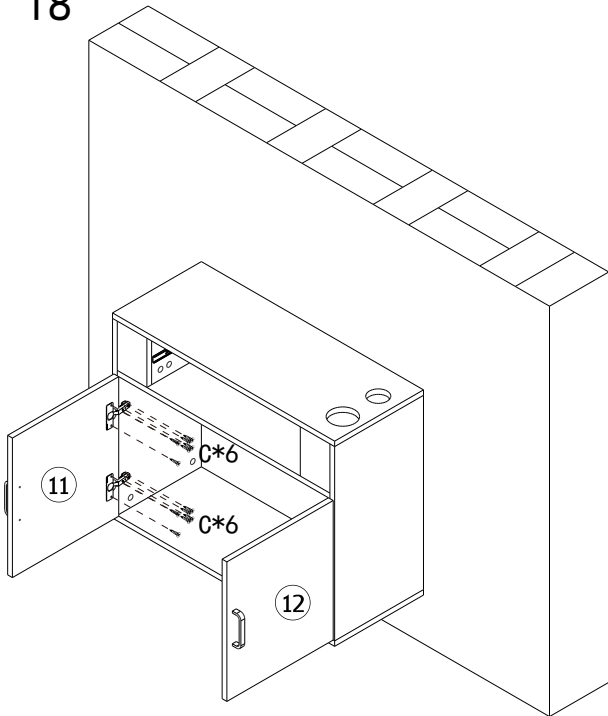
STEP 17



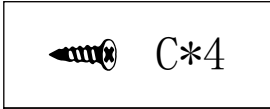
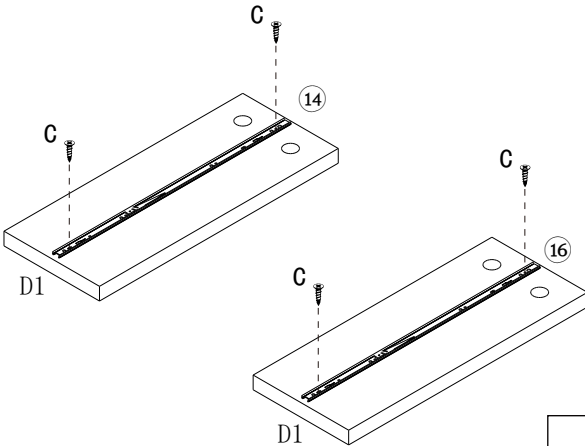
STEP 19



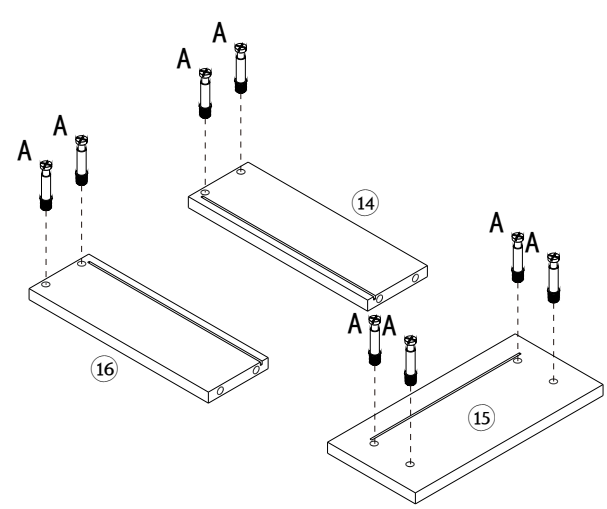
STEP 18

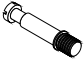


STEP 20

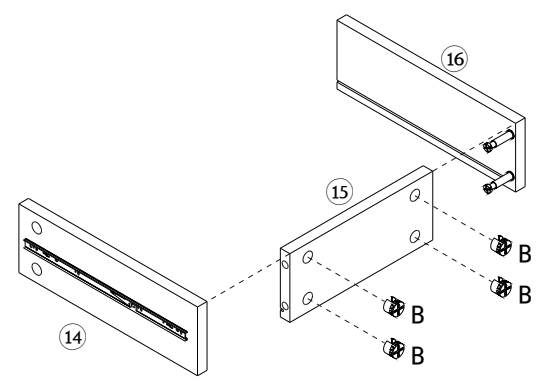


STEP 21



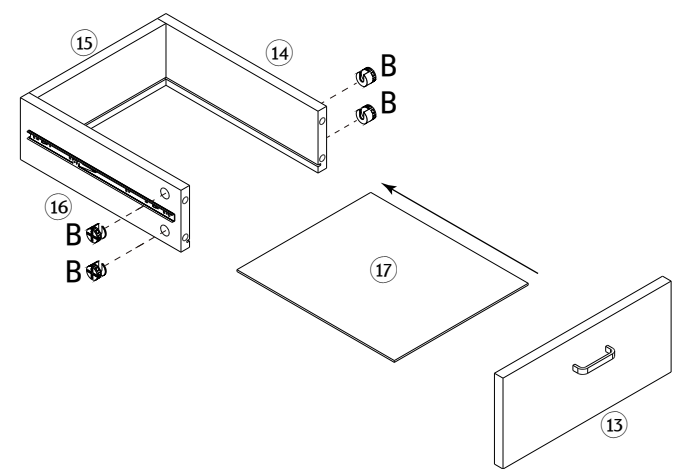
 A\*8

STEP 22



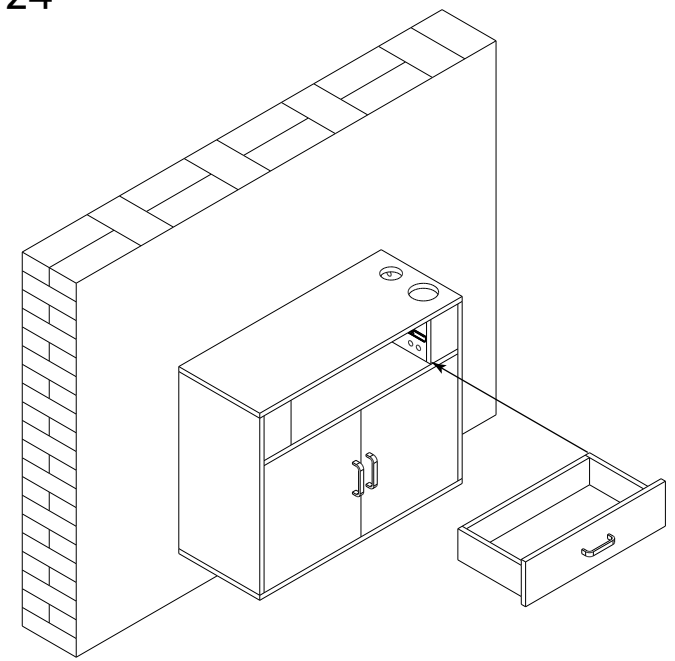
 B\*4

STEP 23

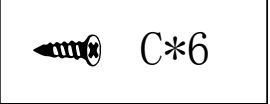
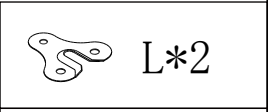
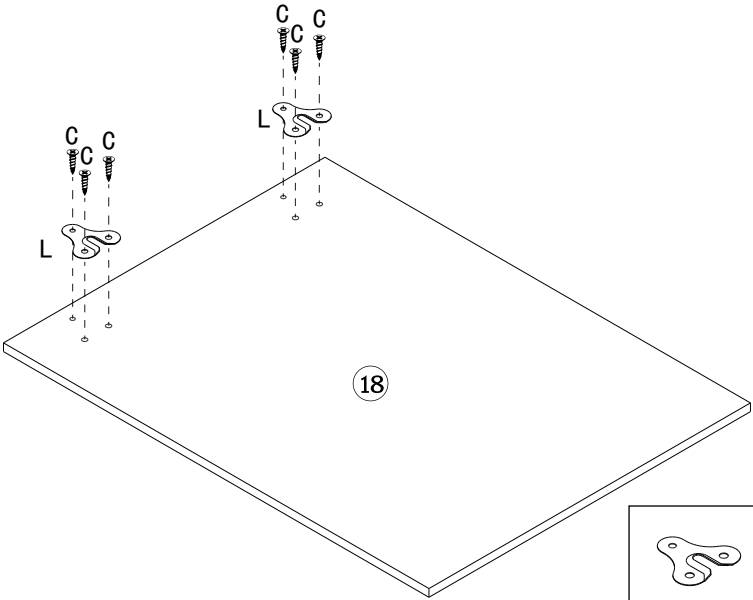


 B\*4

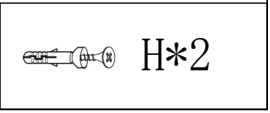
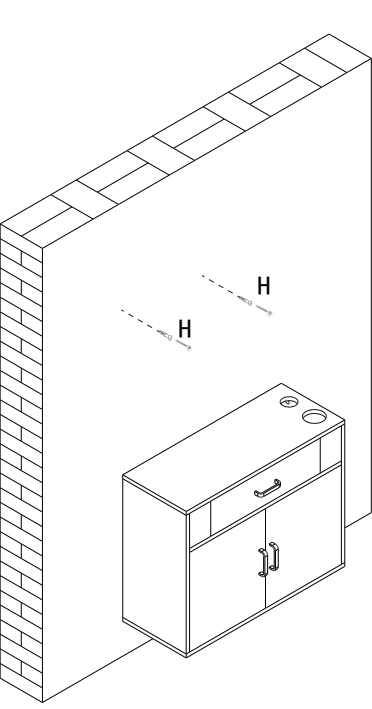
STEP 24



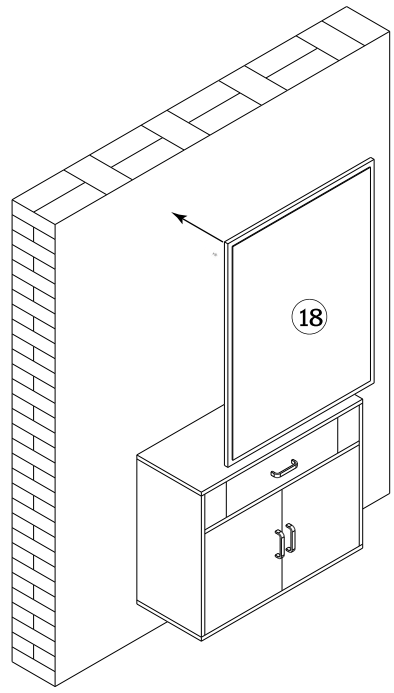
STEP 25



STEP 26



STEP 27



STEP 28

