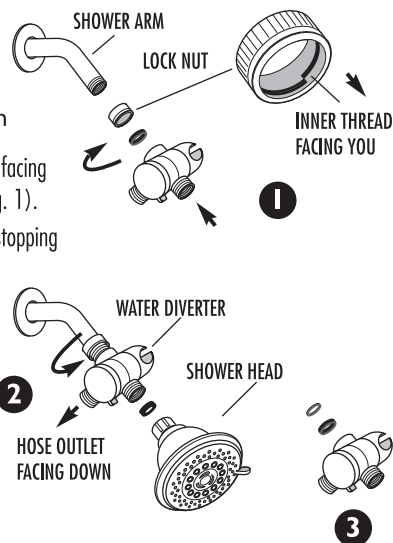


To Connect

HOTEL SPA®

3 WAY SHOWER COMBO with Pause Switch

1. Remove old shower head. Screw Lock Nut, with single Inner Thread facing YOU, onto shower arm to end of its thread, but DO NOT tighten (Fig. 1).
2. Screw Water Diverter with Thick Washer in place onto Shower Arm stopping at last possible position when Hose Outlet is facing DOWN (Fig. 2).
3. Counter-tighten Lock Nut in reverse direction, until it presses tightly against Diverter, thereby locking it in this position.
4. Remove protective cap off Shower Head Nut and make sure Washer rests flat over Water Flow Regulator located inside Nut (Fig. 7A). Then screw Shower Head onto Front Outlet (Fig. 2).
5. Turn ON water to test connection. If leakage occurs, disconnect Diverter and add Thin Washer (spare) to Thick Washer already inside its neck (Fig. 3), then reconnect and test again.



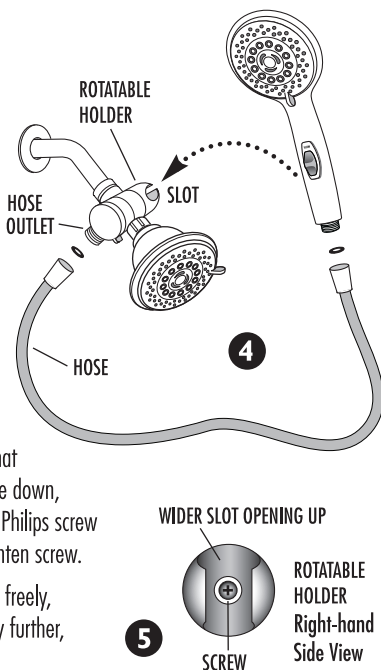
If Leakage Occurs Due to Short Shower Arm Threads, DO NOT Use Lock Nut

To stop leakage, your Shower Arm end must always reach Washer inside Diverter and press against it. If your Shower Arm with Lock Nut on it does not have enough threads to reach Thick Washer inside Diverter, remove Lock Nut and DO NOT use it. Add Thin Washer to Thick Washer, if needed, for better alignment (Thin Washer compensates for about 1/2 thread turn).

6. Screw Hose end nut with Hose Washer in place onto Hose Outlet (Fig. 4). Screw other Hose end nut with Hose Washer in place onto Hand Shower handle and place Hand Shower into Rotatable Holder.

If Hand Shower does not fit well into Holder Slot, check to make sure that wider side of Holder's Slot opening is on TOP (Fig. 5). If Holder is upside down, rotate it 180° into correct position. If it is too tight to rotate, loosen the Philips screw on the inner Slot wall, then rotate Holder into correct position and re-tighten screw.

If Hand Shower does not stay UP and falls down because Holder rotates freely, tighten the Philips screw on the inner Slot wall. If it does not tighten any further, call Customer Care to get free replacement sent to you within 24 hours.

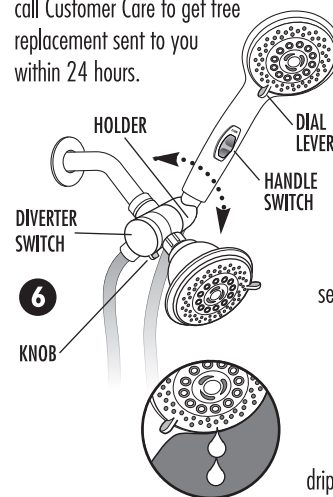


IMPORTANT: Hand tighten connections ONLY. DO NOT use wrench or pliers.

DO NOT overtighten - this may cause washer to bend and be pushed into shower arm. Use plumber's tape ONLY if needed on shower arm thread if washers fail to stop leakage. DO NOT use plumber's tape on any other connections.

NOTE: If your shower arm has a ball on the end instead of a thread, this old type of shower arm will not work with this and most other showers on the market today. Your existing shower arm can be easily replaced with a standard 1/2" thread shower arm available at most plumbing supply stores.

If it appears that you are missing Washer(s) or other part(s), or have a defective part, call Customer Care to get free replacement sent to you within 24 hours.



To Use 3 way Water Diverter

To change water flow, turn Diverter Switch 90° with Knob pointing in the shutoff direction (Fig. 6). Point Lever STRAIGHT to use Hand Shower, DOWN to use Shower Head or UP to use combination of both.

To Adjust Angle of Hand Shower

Rotate Holder in vertical directions to set desired Hand Shower angle.

To Use 6-function Shower Head and Hand Shower Dial

Turn Dial Lever to select desired water pattern for each shower. Choose from Rain, Massage, Mist, Eco Rain and 2 combination settings. Use Handle Switch for Pause setting. When turning Shower Head dial, we recommend that you hold Shower Head with free hand to prevent accidental loosening of Diverter connection.

To Save Water while Lathering or Shampooing

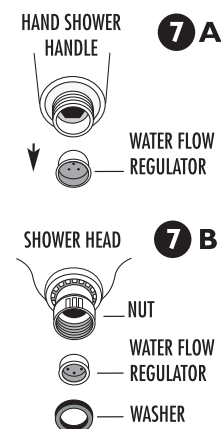
To save water, turn Dial Lever to ECO RAIN or push Handle Switch UP to Pause position. For your safety (to prevent pressure buildup), PAUSE mode has water dripping instead of complete shut-off. After use, DO NOT leave Dial set to Pause mode.

Low Water Pressure? You can remove Water Flow Regulator

As mandated by U.S. federal law, each shower is equipped with water flow regulator that limits maximum water flow to 2.5 gallons (9.5 liters) per minute at 80 psi water pressure. In areas with extremely low water pressure causing the shower water flow to be unsatisfactory, the flow regulator may be removed to improve the water flow in the shower head.

To Remove Water Flow Regulators

Hand Shower Water Flow Regulator is located inside Hand Shower Handle (Fig. 7A). Shower Head Water Flow Regulator is located inside Nut underneath the Washer (Fig. 7B). To remove Water Flow Regulator, use any long-nose tool like screwdriver or wire hook to pull it out, or call customer service for directions.



Cleaning Instructions

To maintain proper working condition, cleaning is required when mineral deposits appear on jet tips. Clean flexible nozzles by rubbing with a finger or soft bristled toothbrush, or soak in 50% white vinegar/50% water solution. DO NOT use harsh chemicals, heavy-duty cleaners or abrasives. This may damage parts or finish and may void warranty.

If you have installation problem, please DO NOT return this product before calling first.

For Questions on Installation or Part Replacement Call Toll Free Item 4391

1-888-869-4010

Monday - Friday 9:00 AM - 4:00 PM Eastern Time

Visit us at ipshowers.com for other products

Interlink Products International, Inc. 1315 E. Elizabeth Ave., Linden, NJ 07036

LIFETIME LIMITED WARRANTY

Interlink will repair or replace any of this product's parts that exhibit defects in workmanship or materials for above stated period from date of purchase. If malfunction occurs, send only defective part(s) with proof of purchase to Customer Service Department at the address listed below. Your warranty does not cover malfunction or damage due to accident, misuse, or failure to follow any written instructions accompanying this product.

2.5 GPM • Patent Pending • Made in China