

INSTALLATION INSTRUCTIONS

Pull Out Cabinet Organizer With Ball Bearing Slides

TOOLS REQUIRED



Hand Drill



Phillips Screwdriver

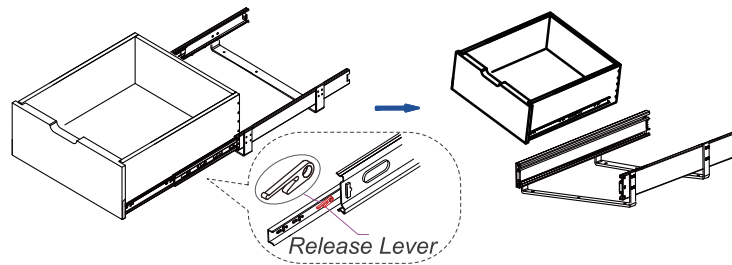
PRODUCT INFORMATION

● **Organizer Dimension:**
10.5"~22.5"W×8"H×21"D

● **Package Contents:**
Fully Assembled Pull Out Organizer×1
Screw×10 (+2 extra)
Mounting Template×1
Installation Instructions×1
After-Sales Service Card×1

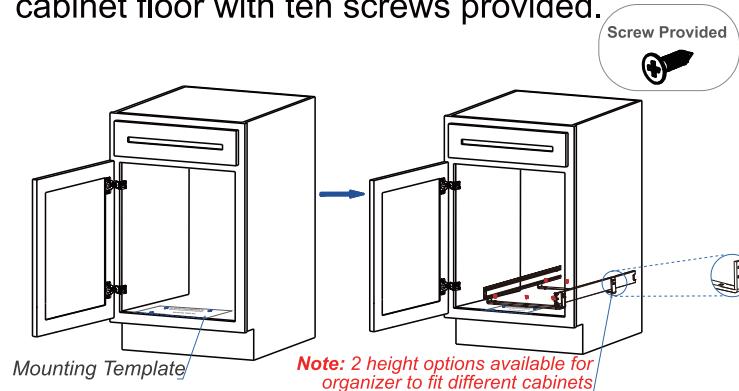
STEP 1

Pull out the organizer towards you and press the release lever on inner rail to remove the organizer from the Slide-Frame.



STEP 2

Determine the installation position of Slide-Frame according to the instructions on the Mounting Template provided, then attach Slide-Frame U-Shaped Support Brackets to the fixed shelf or cabinet floor with ten screws provided.



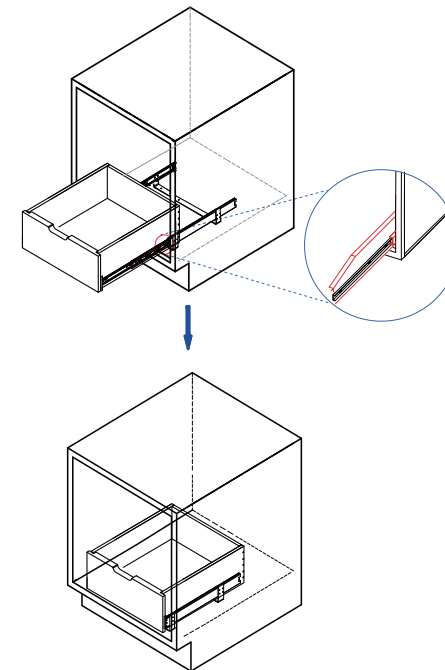
Mounting Template

Note: 2 height options available for organizer to fit different cabinets

STEP 3

Remove the template and place the organizer back into the frame structure slides.

- ① Slide the inner ball bearing carriage all the way forward to the stop for both frame structure slides.
- ② Insert the back end of the organizer rails into the frame structure slides and push the organizer into frame firmly.



The installation of this product is complete

THANK YOU

We appreciate the trust and confidence you have placed in HomLux through the purchase of this product.
We endeavor to continually create high quality products to enhance your home.