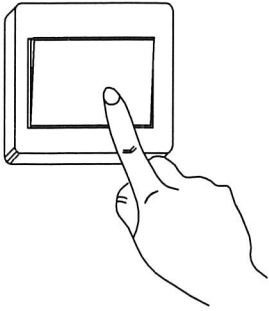


Installation Instruction

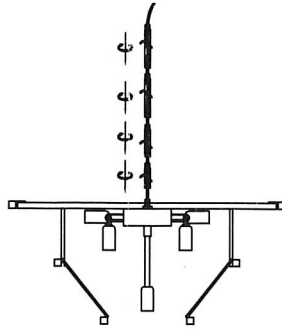
Item: LX54/D24"H19" L10"E12

1



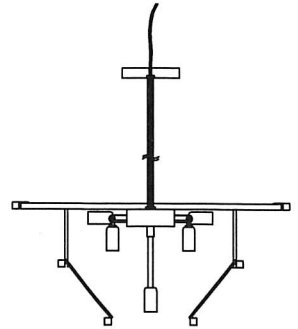
Turn off the power.

2



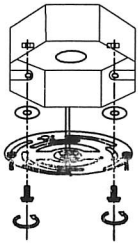
Screw the metal rods on the coupling.

3



Install canopy on the metal rods.

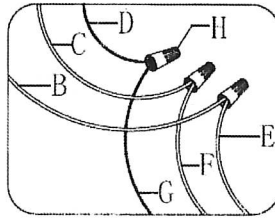
4



Install mounting bracket.

Connect suction top plate to lock

5

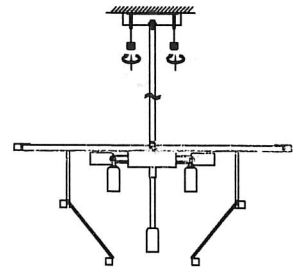


Wire connection

- B-Black wire (L) from junction box
- C-White wire (N) from junction box
- D-Green wire/bare copper (G) from junction box
- E-Black wire (L) from fixture
- F-White wire (N) from fixture
- G-Green wire/Bare copper from fixture
- H-wire connector x 3

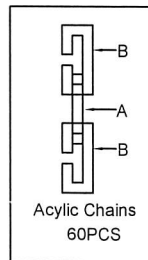
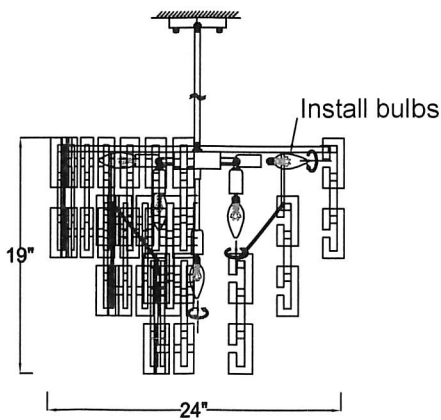
Conect wires

6



Attach the canopy to the mounting plate, Secure it with ball nuts.

7



Please test the power first to ensure that the light source works normally, then cut off the power, and then do the necessary installation works (such as hanging acylic chains).

Warning:

1. Please wear gloves during the installation.
2. Do not install on ceiling which is damp or with wet limewater.
3. Cut off the electricity before installation in case of being shocked.
4. Make sure the connected bolt is tightly locked before getting through the electricity.



5. Do not cut off the electricity before washing or repairing, and use the scour without causticity.
6. Please cut off the electricity and wait until the bulb gets cooling before replacing the bulb in case of being burned.