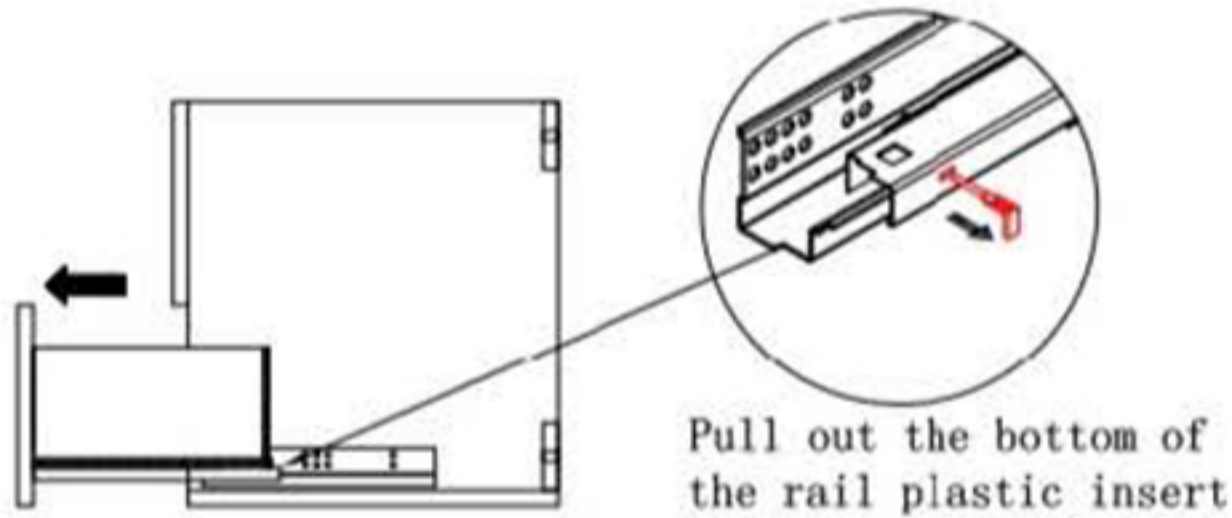


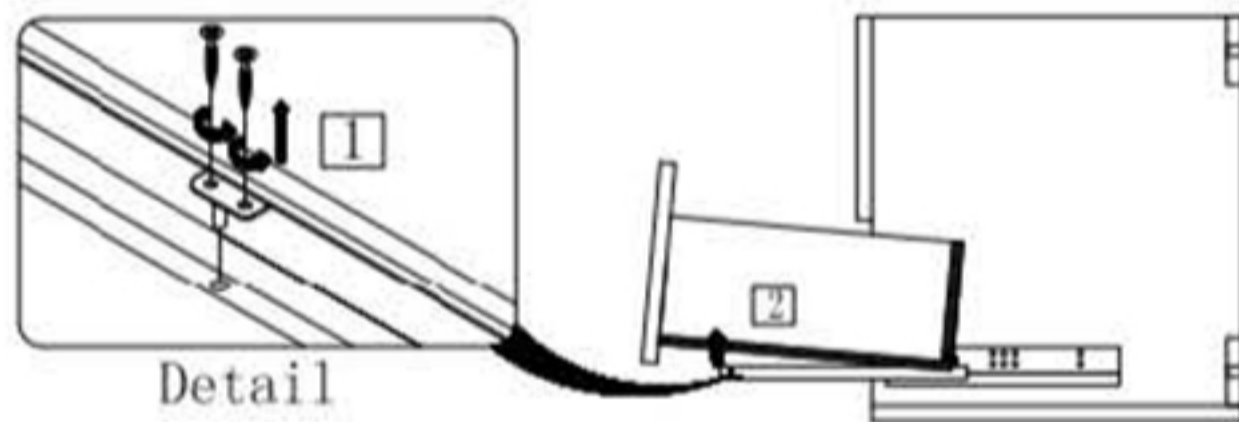
DRAWER REMOVAL & INSTALLATION

REMOVEL

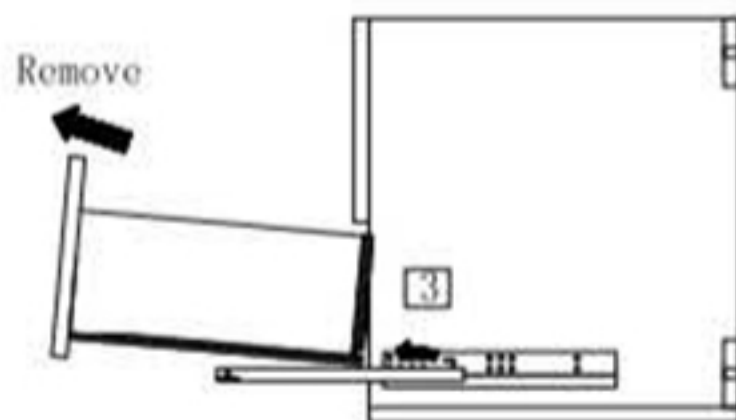
1. Full pull out the drawer.



2. Release the drawer bottom self work screw.

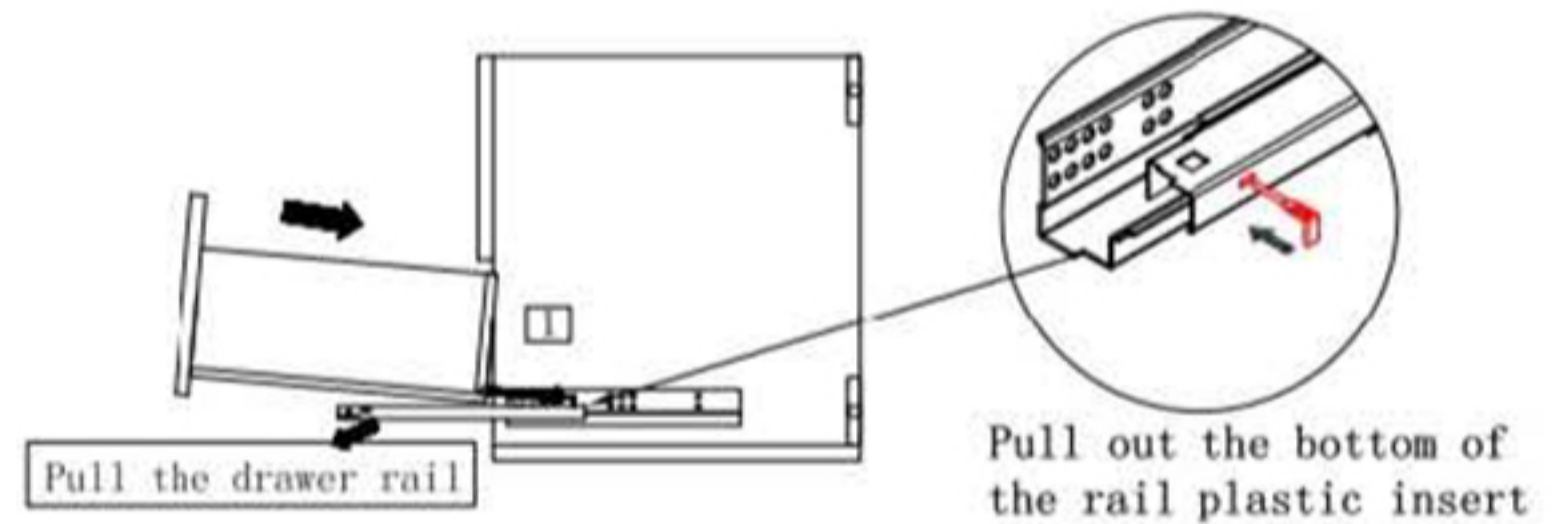


3. Finally pull out the drawer.

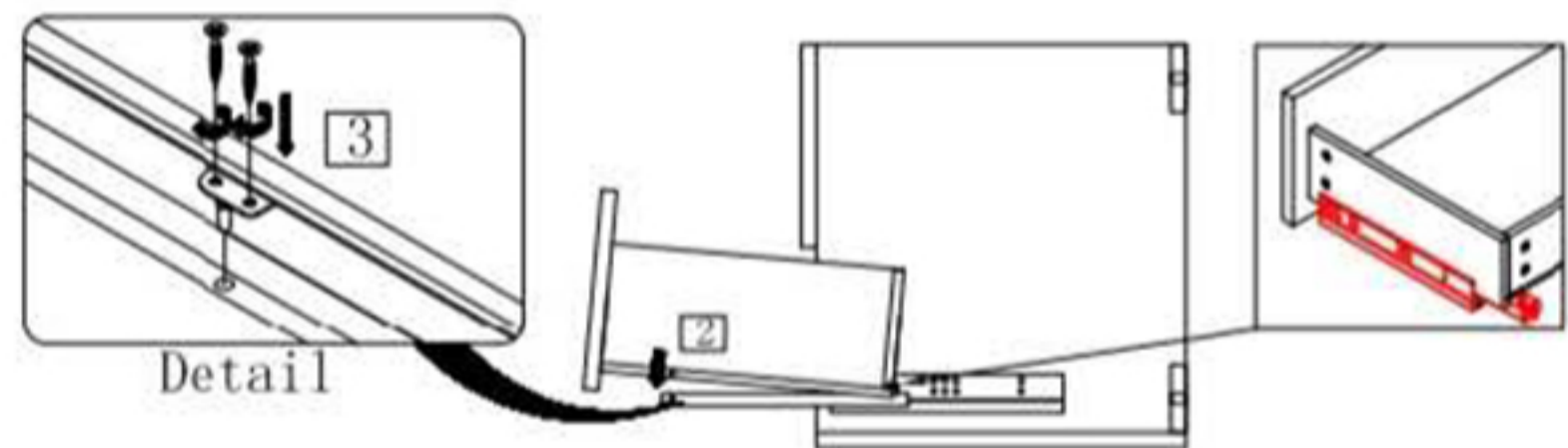


INSTALLTION

1. Pull the drawer rail, rail socket holes at the back of the drawer.



2. With tapping screw tightening the bottom drawer.



3. Push the drawer.

