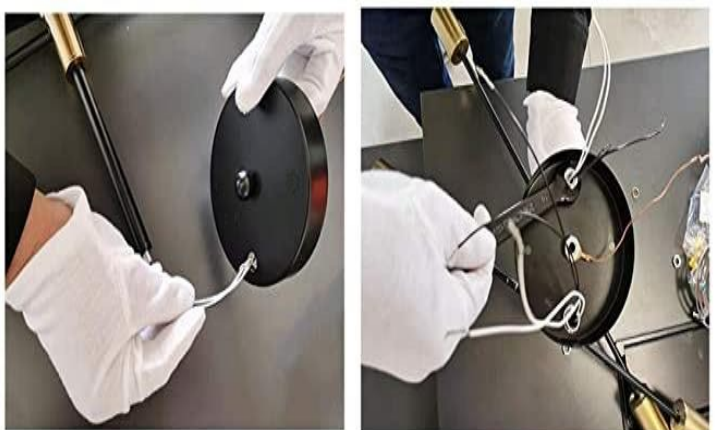
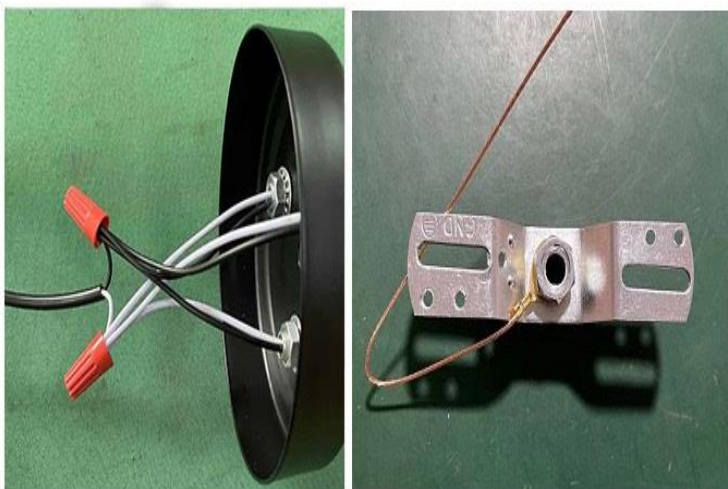




1. Lock the lamp arm to the chassis as shown in the figure. In order to ensure balance, the tooth bar will be tight.



2. Pass the assembled lamp holder wire into the ceiling plate and tighten it.



3. Connect the wires of the same color together, connect with the lamp wires you have reserved, clamp the cables with pliers and do not drop the wires (the terminals can be used or not, this will not affect the use of the light)

6-lights



E26/E27 bulb

Bulbs Not included

4. Remove the hanging board and fix it in position to be installed with gecko nail and expansion screw

*Notes

1. Check the bulb before installation
2. Please cut off the power when installing
3. Recommend professional installers to install
4. If you have any questions, please feel free to contact us