

# EDEN CORNER WALL-HUNG

Cat. No.  
4-1109



Faucet Not Included



Mounting hardware

Width: 17- $\frac{3}{4}$ "  
Depth: 18- $\frac{3}{4}$ "  
Height: 6- $\frac{1}{4}$ "

**\*Please do NOT drill hole without  
template or actual product.**

## Interior Dimensions:

Basin interior: 16- $\frac{1}{2}$ " X 9- $\frac{1}{4}$ "  
Basin depth: 4- $\frac{3}{8}$ "  
Back of basin to center of faucet: 6- $\frac{5}{8}$ "  
Back of basin to center of drain: 11- $\frac{1}{2}$ "  
Faucet hole diameter: 1 $\frac{3}{8}$ "

## Features:

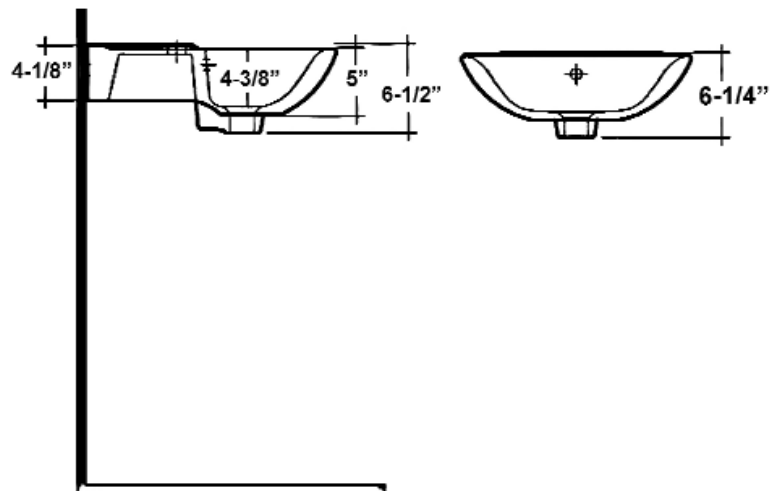
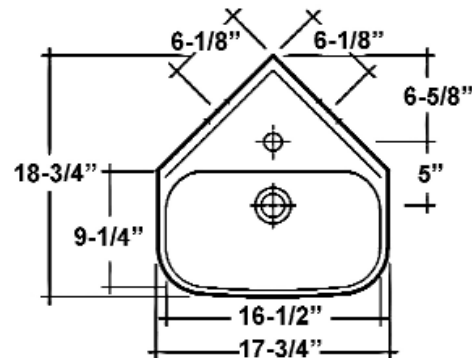
- ▶ Vitreous China
- ▶ Available for 1 faucet hole
- ▶ Pre-drilled overflow hole
- ▶ Perfect for corners
- ▶ Mounting hardware included

## Colors:

WH White

## Compliance Certification

Meets or exceeds the following  
specifications: ASME A112.19.2  
2013 and CSA B45.1-13 for  
plumbing fixtures.



Dimensions of fixture are nominal and may vary within the range of tolerances established by ANSI Standard A112.19.2. Dimensions and specifications subject to change without notice.