

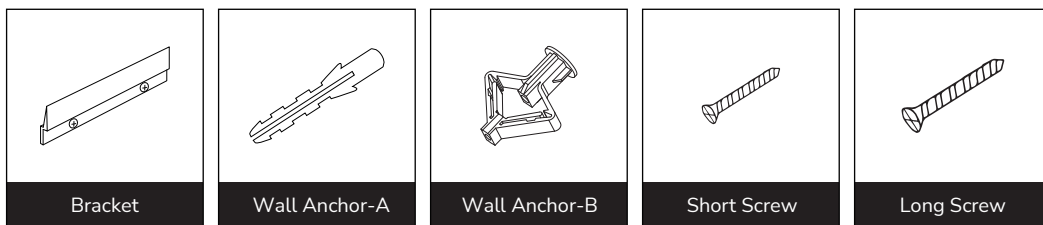
# INSTALLATION MANUAL

## LED BATHROOM MIRROR

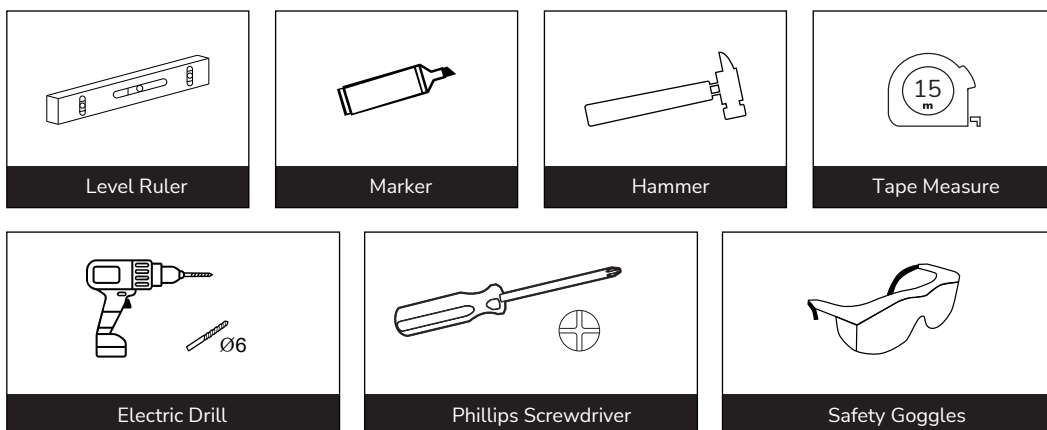
### ABOUT US

Thank you for shopping with us! We hope that our products have added a touch of brightness to your life. If you need any assistance, please don't hesitate to reach out. Our dedicated team is available 24/7 to ensure your satisfaction.

### ACCESSORIES LIST



### TOOLS REQUIRED



### BEFORE INSTALLATION

Thank you for choosing our products. To ensure the best possible experience, please read carefully and follow the instructions provided below before assembling and installing the product.

#### 1. Important Safety Instructions:

- Assemble the product by two or more adults to ensure proper installation.
- To connect the wires to electrical junction box, consultation with a qualified technician or electrician is highly recommended.
- Disconnect power before installing, adding, or changing any components.
- Make sure that the fixing location can support the weight of the entire fixture (e.g. solid stone or brick walls).
- To prevent injury, the mirror must be installed according to the instructions provided.

#### 2. Pre-assembly:

- The voltage for your product should be between 100V and 120V. If the voltage exceeds 120V, please use a transformer.
- Please do not remove the plastic corner guards and transparent film on the mirror until the installation is finished.

#### 3. Before Installation:

- Please check and make sure that the mirror is functioning properly.

#### • Power Check

After powering on, the backlight of two buttons will activate automatically.

#### • Anti-fog

The anti-fog function helps resist the troubling fog and keep a clear reflection image. To save energy, it will automatically turn off after one hour.

## • Touch Switch



### Mirror with 3 color temperatures

The button controls the light brightness and color temperature. Keep holding it and the brightness will change. You can adjust the color temperature as well: the first tap is white light, the second one is warm light, and the third one is natural light.

If no button is pressed within 15 seconds, the next tap will turn off the light immediately.

### Mirror with single color temperature

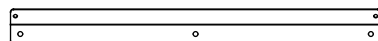
The button controls the light brightness. Keep holding it to adjust the brightness level.

## • Memory Function

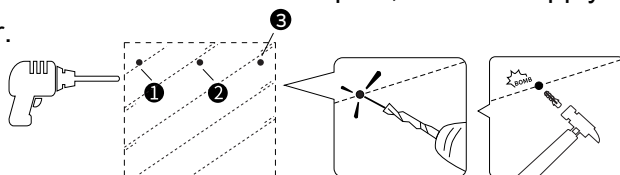
Your current settings will be saved, and it will resume in the same settings when you turn it on again.

# INSTRUCTIONS

1. Confirm the locations of three drill holes with a level and mark them on the wall.



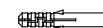
2. Use an electric drill to punch holes at the marked spots, and then apply wall anchors with a hammer.



## Thickness of Wall

## Recommended Drill Bit

> 16mm



1/4" (6mm) drill bit, drilling depth in 1 31/32" (50mm)

8 ~ 16mm



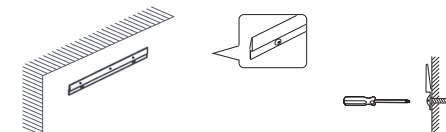
25/64" (10mm) drill bit

< 8mm

Unapplicable

Note: Please wear goggles and pay attention to safety.

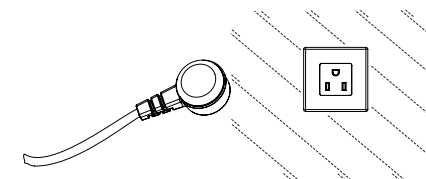
3. Screw the bracket to the wall.



4. Connect the power by plugging into an outlet or hardwired to a standard circuit panel.

### • Option 1: Plug-in

After hanging the mirror securely, plug the power cable to a standard socket.



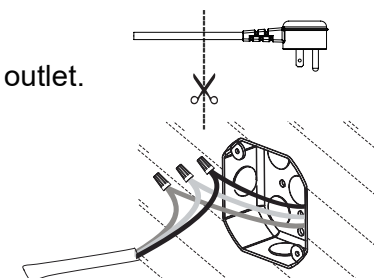
### • Option 2: Hardwired

Cut the head off the plug and hardwire it into an outlet.

Black wire --- power supply L (LIVE)

White wire --- power supply N (NEUTRAL)

Green wire --- power supply E (EARTH)



WARNING: This mirror must be earthed.



REMINDER: Please make sure the power is cut off before installation.

5. Place the mirror against the wall, align the hook with the mounted bracket, slowly lower the mirror down, and make sure that it slots into the right position and hangs securely.

