

ASSEMBLY INSTRUCTION

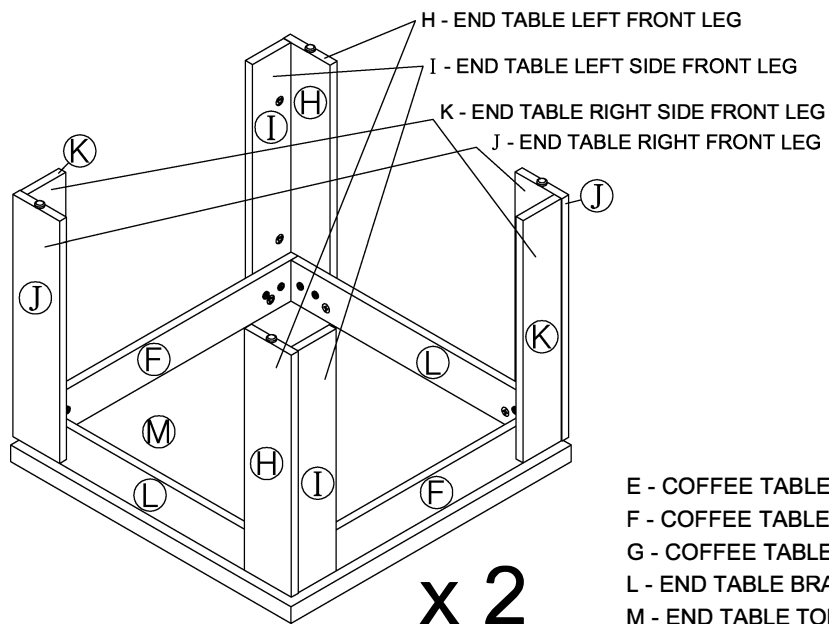
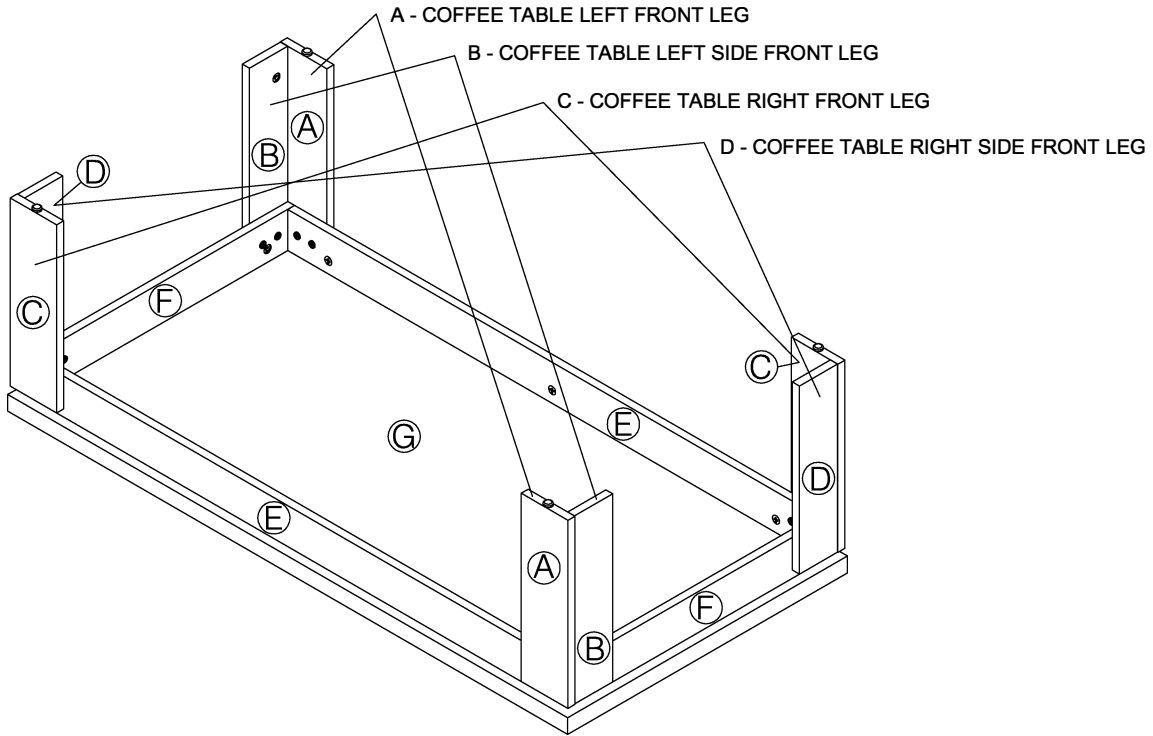
ASSEMBLY TIPS :

- 1.Remove hardware from box and sort by size.
- 2.Please check to see that all hardware and parts are present prior to start of assembly.
- 3.Please follow attached instructions in the same sequence as numbered to assure fast & easy assembly.

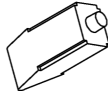

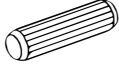

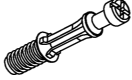
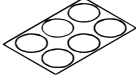



Warning !

- 1.Don't attempt to repair or modify parts that are broken or defective.Please contact the store immediately.
- 2.This product is for home use only and not intended for commercial establishment.

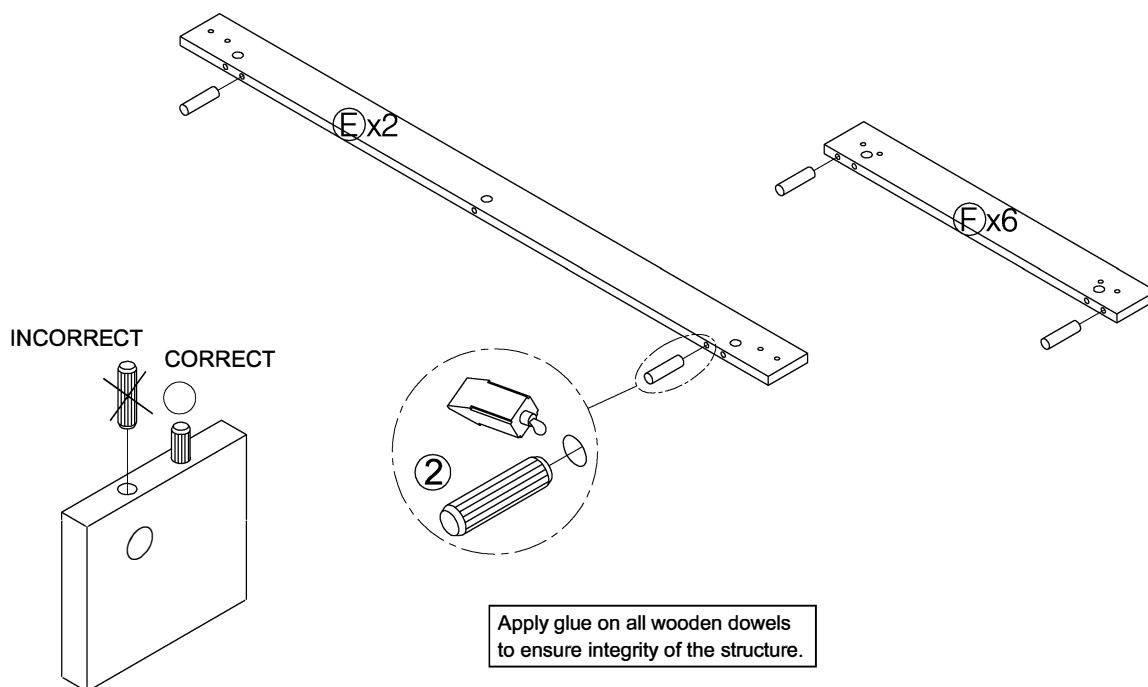
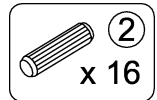


- E - COFFEE TABLE LONG BRACE
F - COFFEE TABLE SHORT BRACE
G - COFFEE TABLE TOP
L - END TABLE BRACE
M - END TABLE TOP

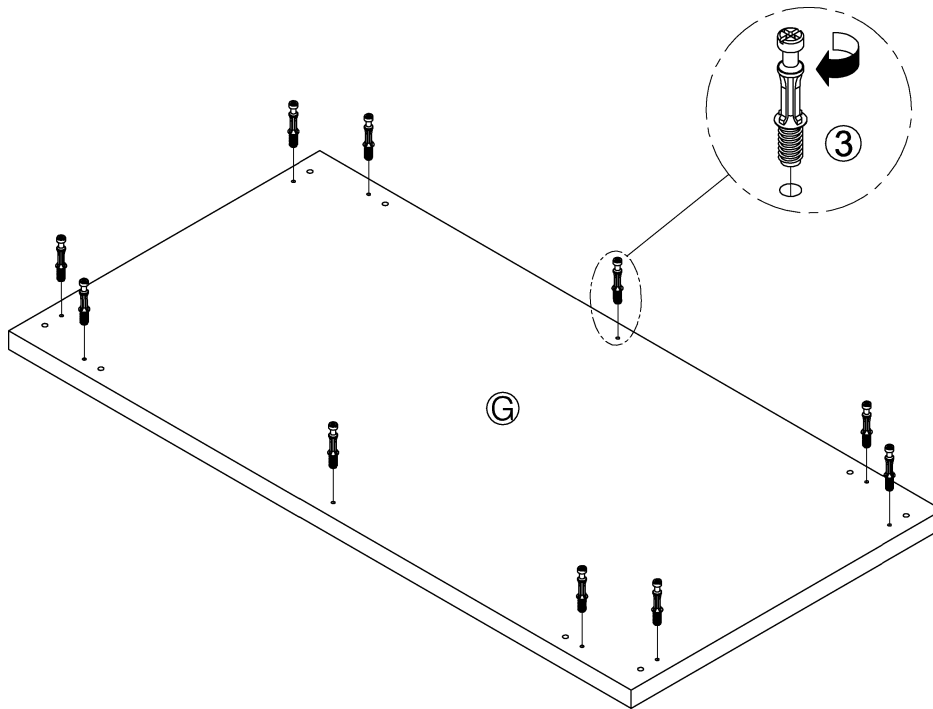
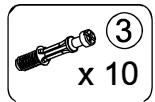
| HARDWARE PACKAGE | | | | | | | |
|------------------|--------------------------|---|-------|----|---------------------|---|-------|
| NO | DESCRIPTION | FIGURE | Q'TY | NO | DESCRIPTION | FIGURE | Q'TY |
| 1 | GLUE 40g |  | 1PC | 5 | BOLT M6 x 27.5mm |  | 48PCS |
| 2 | WOODEN DOWEL ϕ 8x30mm |  | 48PCS | 6 | PLASTIC FEET ϕ 15mm |  | 12PCS |
| 3 | CAM BOLT ϕ 7x35.5mm |  | 50PCS | 7 | STICKER ϕ 20mm |  | 9PCS |
| 4 | CAM LOCK ϕ 15x12mm |  | 50PCS | | | | |

It needs two persons and takes about forty minutes to assemble the item.

STEP 1 : Insert Wooden dowel (2) into the holes on the three sides of Coffee table long brace (E).
 Insert Wooden dowel (2) into the holes on the one side of Coffee table short brace (F).



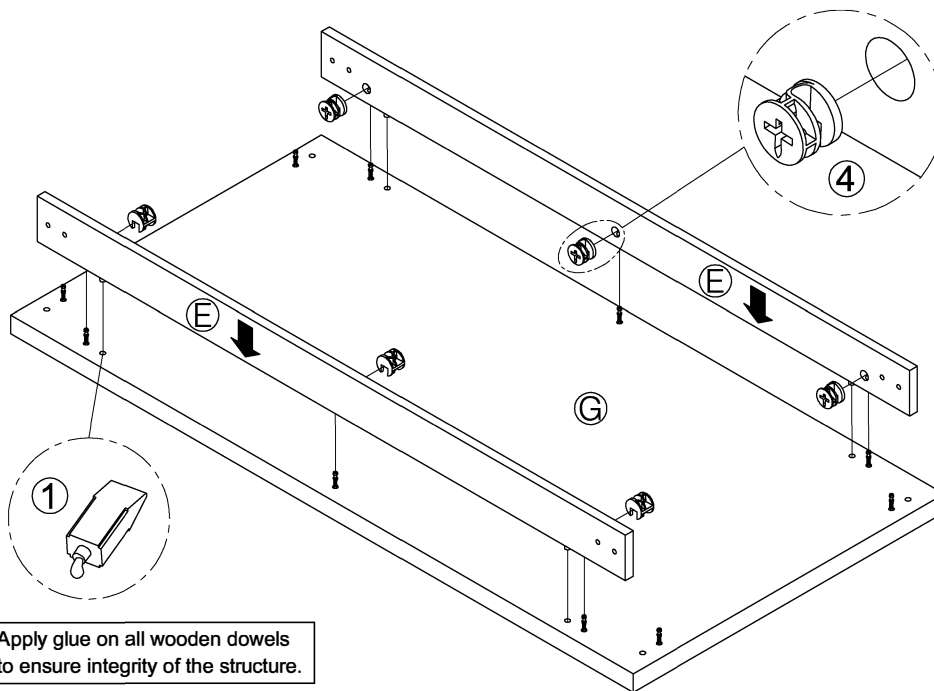
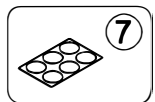
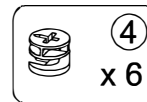
STEP 2 : Insert and screw Cam bolts (3) into the holes on the Coffee table top (G).



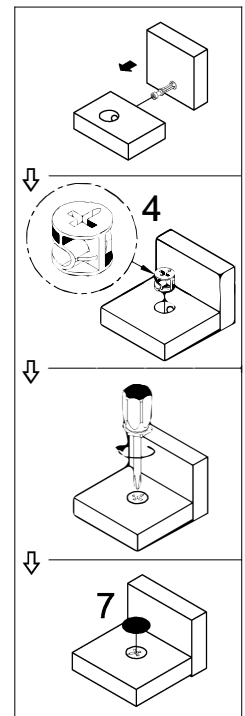
STEP 3 : Connect Coffee table long brace (E) with Coffee table top (G).

Insert Cam locks (4) to the Coffee table long brace (E) to attach the Cam bolts, and tighten with the screw driver (NOT INCLUDED).

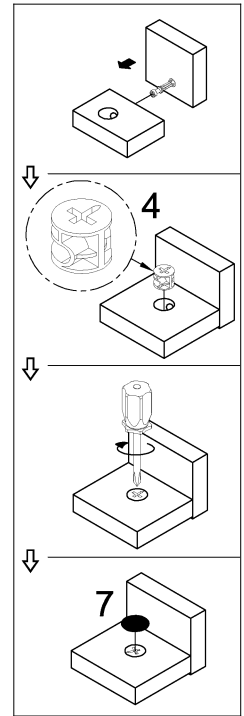
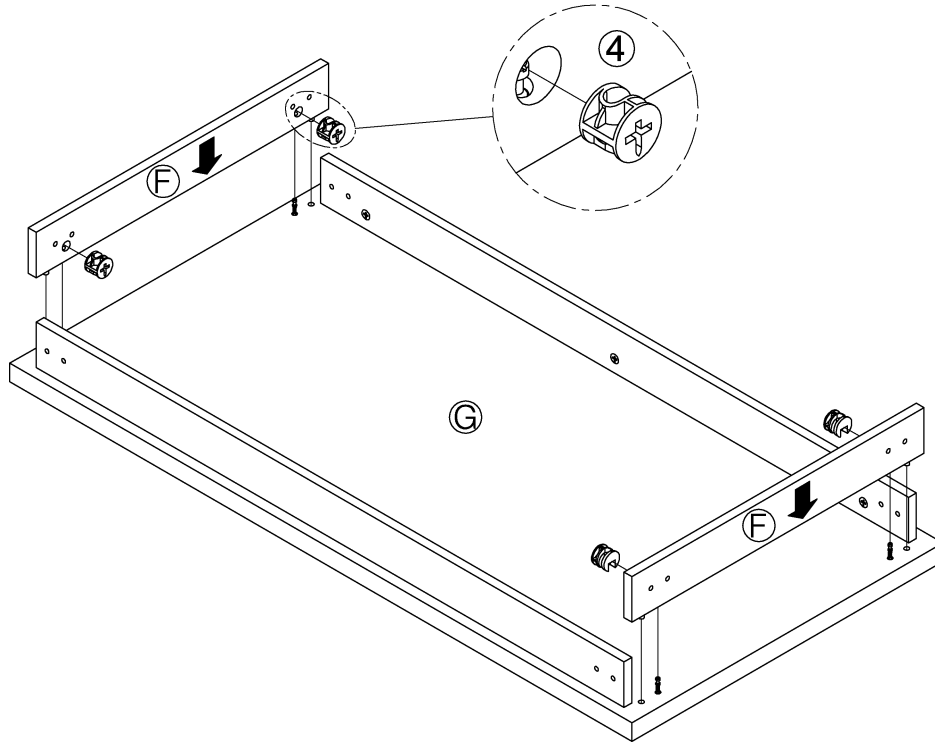
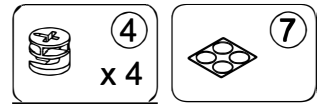
Then place the wood colored stickers (7) on top of the Cam Locks.



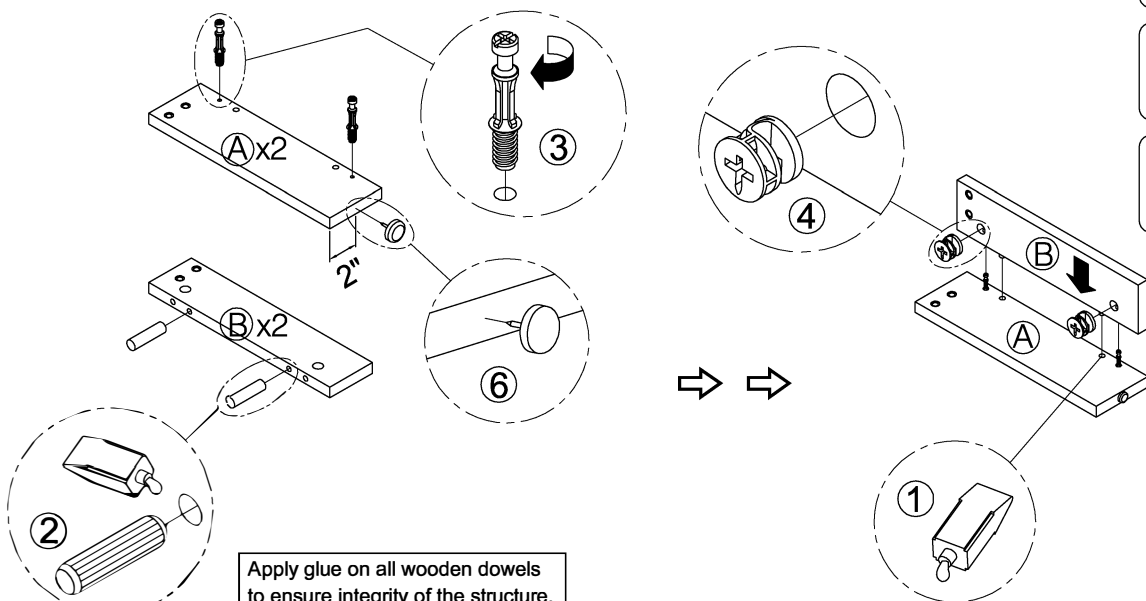
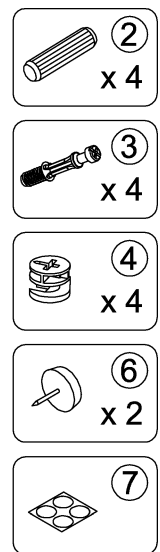
Apply glue on all wooden dowels to ensure integrity of the structure.



STEP 4 : Connect Coffee table short brace (F) to assemble piece (from STEP3).
 Insert Cam locks (4) to the Coffee table short brace (F) to attach the
 Cam bolts and tighten with the screw driver (NOT INCLUDED).
 Then place the wood colored stickers (7) on top of the Cam Locks.



STEP 5 : Insert Wooden dowel (2) into the holes on the one side of Coffee table
 left side front leg (B).
 Insert and screw Cam bolts (3) into the holes on the Coffee table left front leg (A).
 Push in Plastic feet (6) on the bottom of the Coffee table left front leg (A).
 Insert Cam locks (4) to the Coffee table left side front leg (B) to attach to
 the Cam bolts, tighten with the screw driver (NOT INCLUDED).
 Then place the wood colored stickers (7) on top of the Cam Locks.



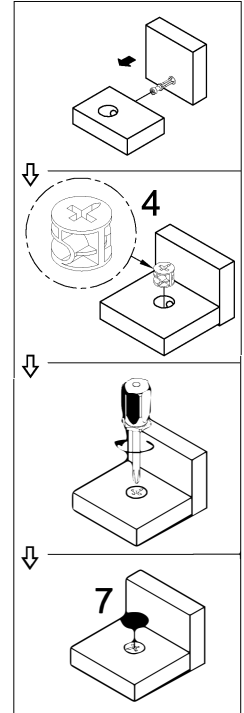
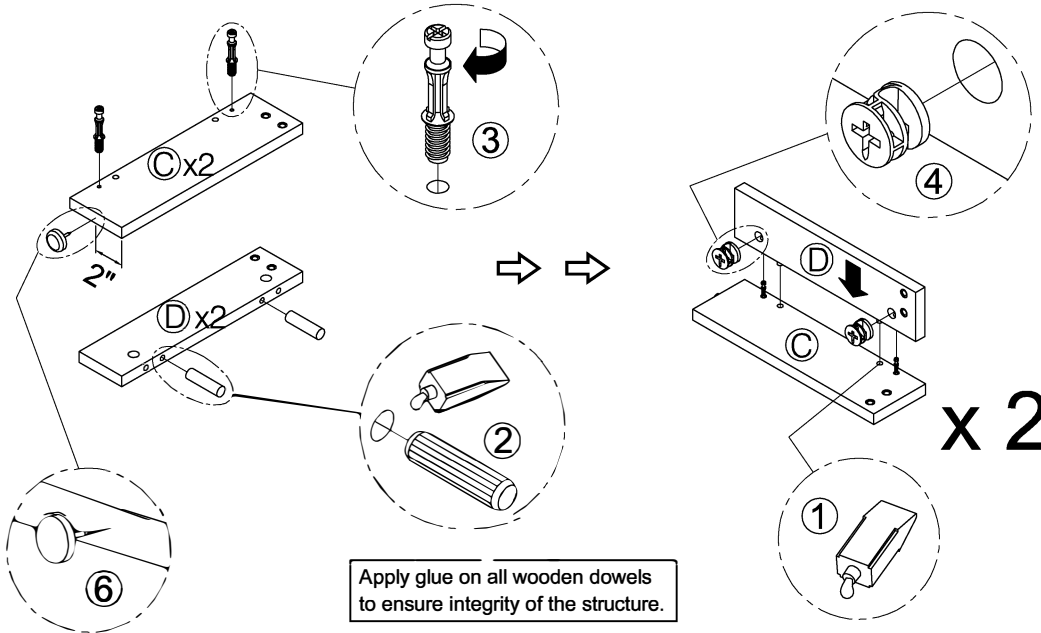
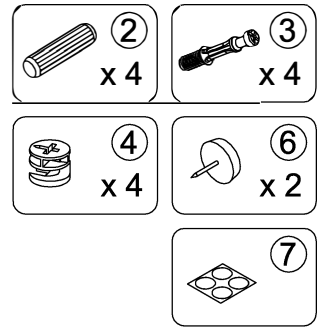
Apply glue on all wooden dowels
 to ensure integrity of the structure.

STEP 6 : Insert Wooden dowel (2) into the holes on the one side of Coffee table right side front leg (D).

Insert and screw Cam bolts (4) into the holes on the Coffee table right front leg (C).

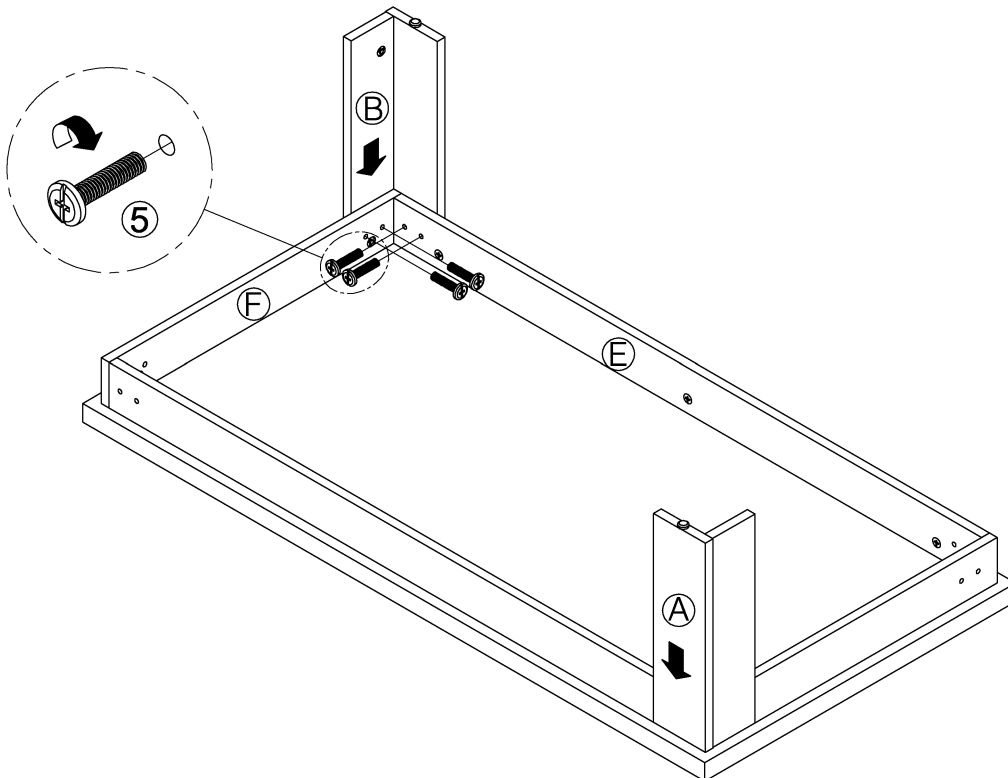
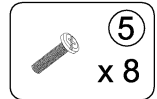
Push in Plastic feet (6) on the bottom of the Coffee table right front leg (C). Insert Cam locks (4) to Coffee table right side front leg (D) to attach to the Cam bolts, tighten with the screw driver (NOT INCLUDED).

Then place the wood colored stickers (7) on top of the Cam Locks.

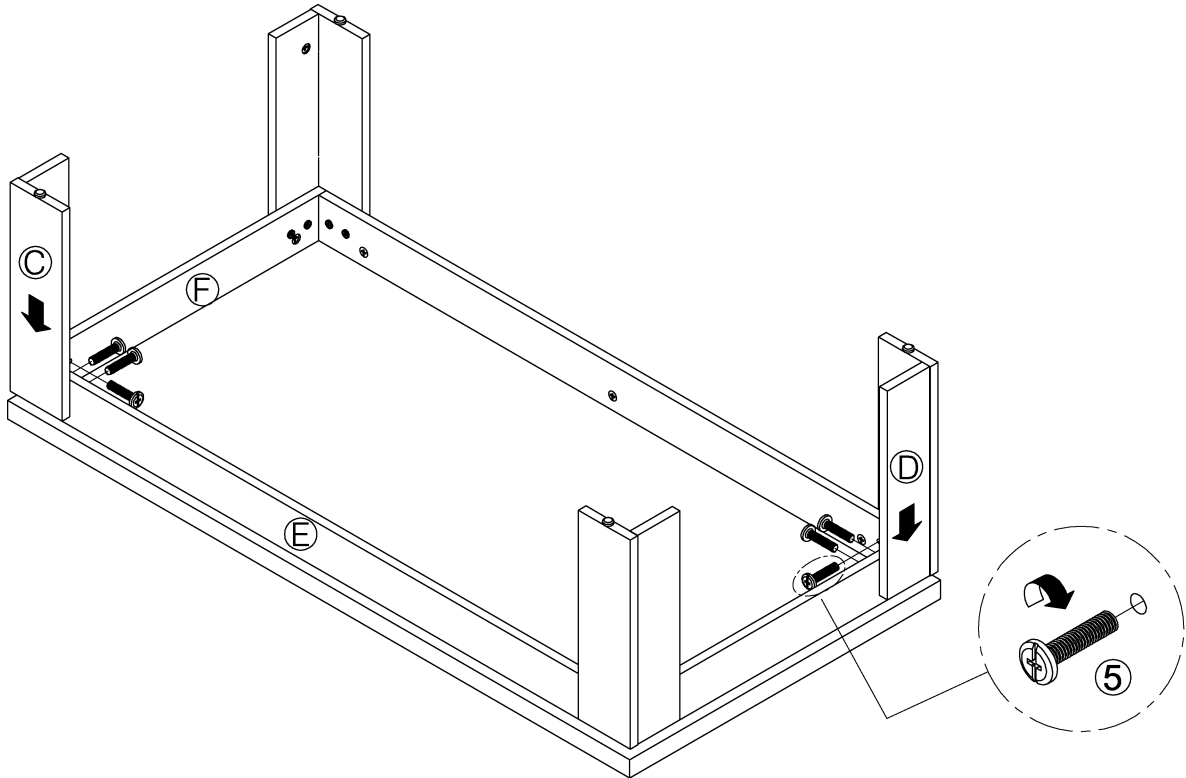
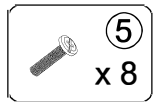


STEP 7 : Connect Coffee table left side front leg (B) and Coffee table left front leg (A) with Coffee table long brace (E) and Coffee table short brace (F).

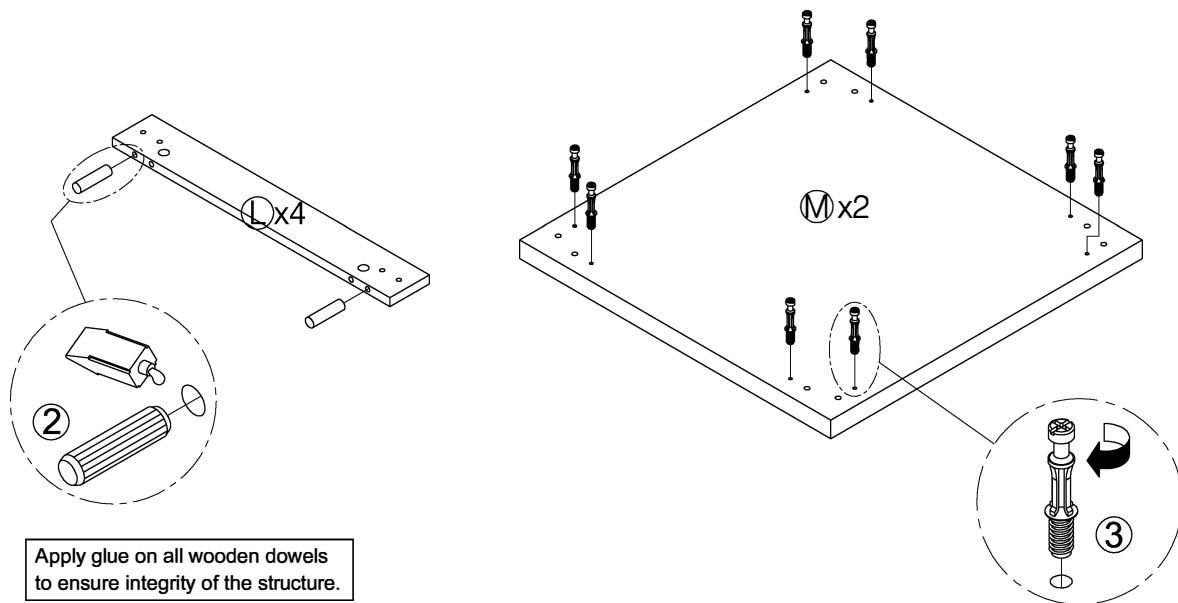
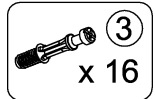
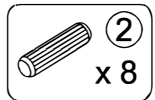
Insert and screw Bolts (5) into the holes on Coffee table long brace (E) and Coffee table short brace (F).



STEP 8 : Connect Coffee table right front leg (C) and Coffee table right side front leg (D) with Coffee table long brace (E) and Coffee table short brace (F). Insert and screw Bolts (5) into the holes on Coffee table long brace (E) and Coffee table short brace (F).



STEP 9 : Insert Wooden dowel (2) into the holes on one side of End table brace (L). Insert and screw Cam bolts (3) into the holes on the End table top (M).

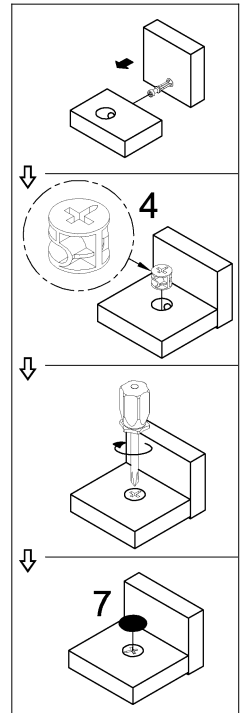
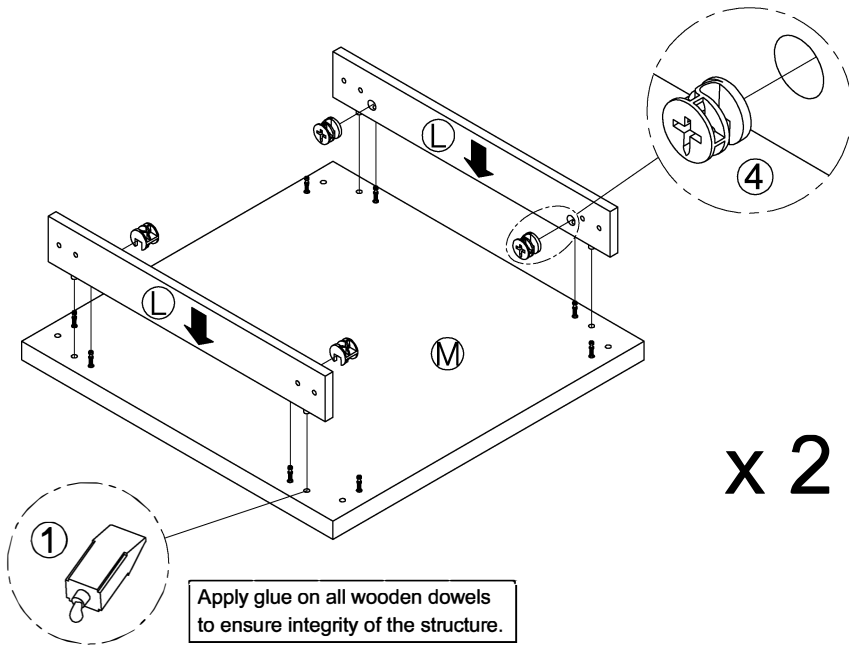
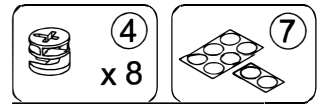


Apply glue on all wooden dowels to ensure integrity of the structure.

STEP 10 : Connect End table brace (L) with End table top (M).

Insert Cam locks (4) to the End table brace (L) to attach the Cam bolts and tighten with the screw driver (NOT INCLUDED).

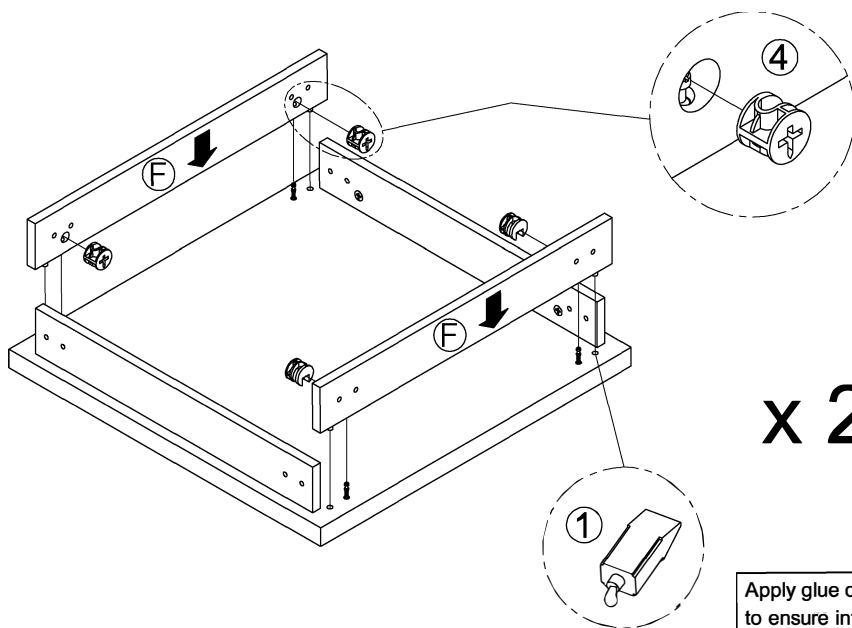
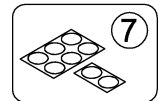
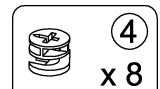
Then place the wood colored stickers (7) on top of the Cam Locks.



STEP 11 : Connect Coffee table short brace (F) with the assemble piece from (STEP 10).

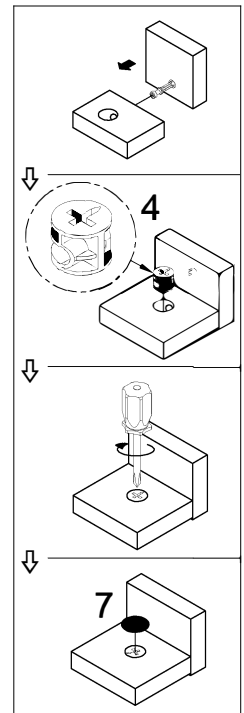
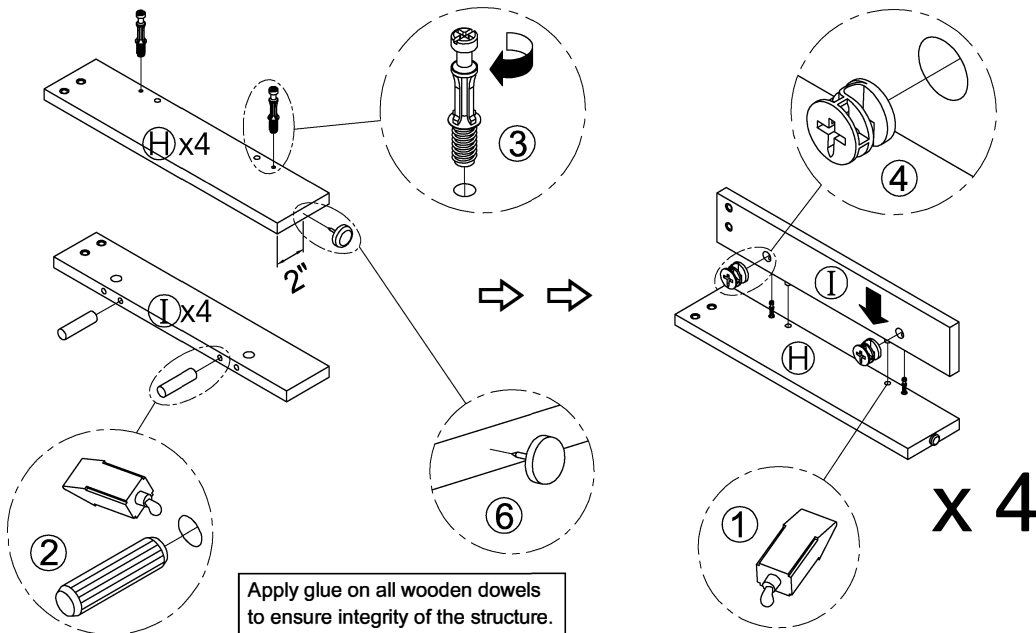
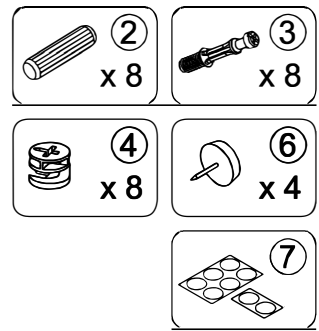
Insert Cam locks (4) to the Coffee table short brace (F) to attach the Cam bolts, and tighten with the screw driver (NOT INCLUDED).

Then place the wood colored stickers (7) on top of the Cam Locks.

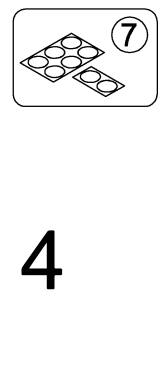
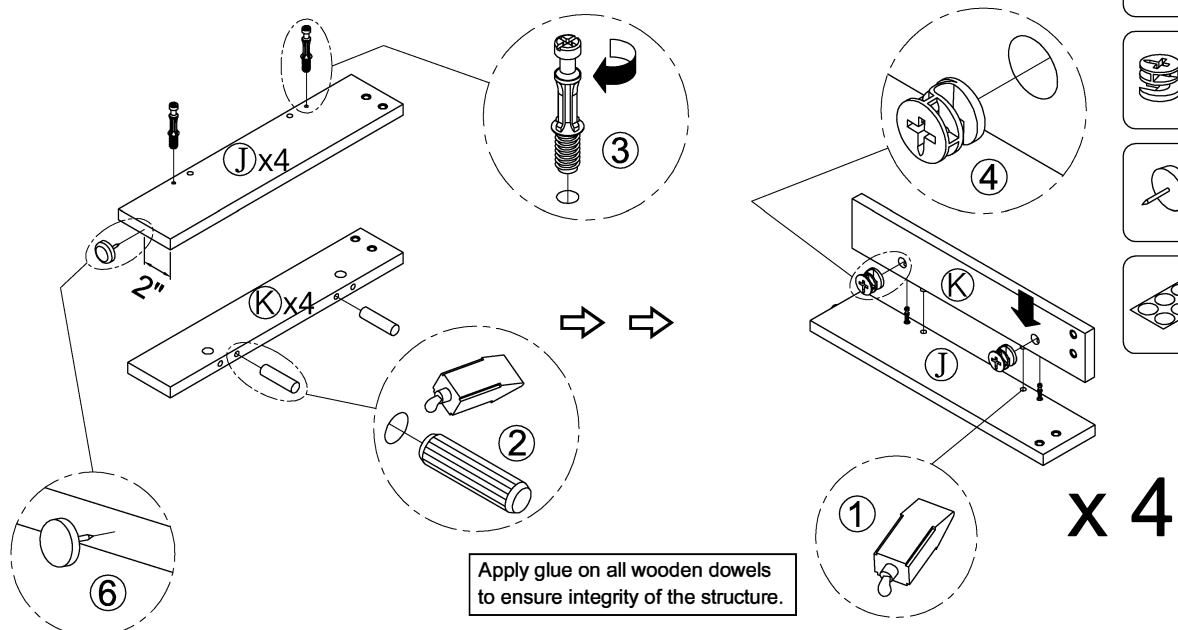
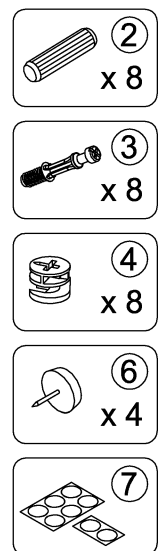


Apply glue on all wooden dowels to ensure integrity of the structure.

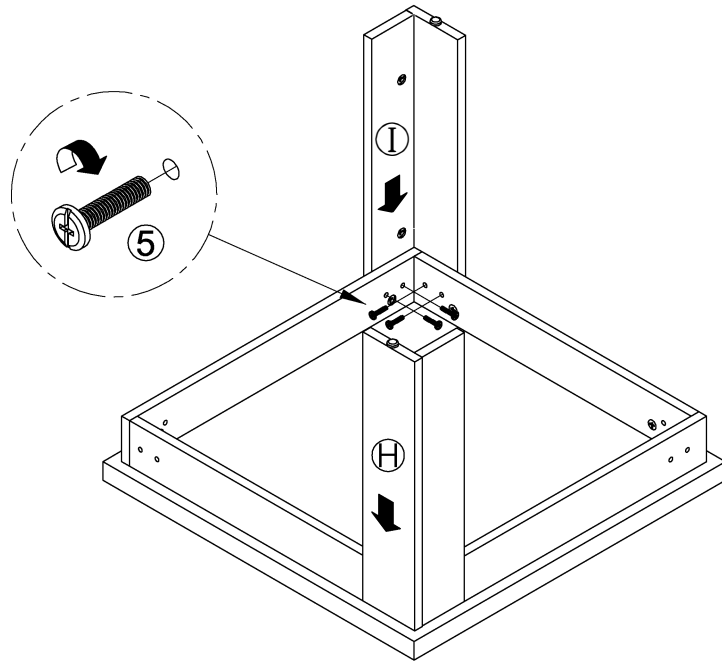
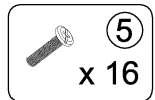
STEP 12 : Insert Wooden dowel (2) into the holes on the one side of End table left side front leg (I).
 Insert and screw Cam bolts (4) into the holes on End table left front leg (H).
 Push in Plastic feet (6) on the bottom of the End table left front leg (H).
 Insert Cam locks (4) to the End table left side front leg (I) to attach to the Cam bolts, tighten with the screw driver (NOT INCLUDED).
 Then place the wood colored stickers (7) on top of the Cam Locks.



STEP 13 : Insert Wooden dowel (2) into the holes on the one side of End table right side front leg (K).
 Insert and screw Cam bolts (3) into the holes on End table right front leg (J).
 Push in Plastic feet (6) on the bottom of End table right front leg (J).
 Insert Cam locks (4) to the End table right side front leg (K) to attach to the Cam bolts, tighten with the screw driver (NOT INCLUDED).
 Then place the wood colored stickers (7) on top of the Cam Locks.

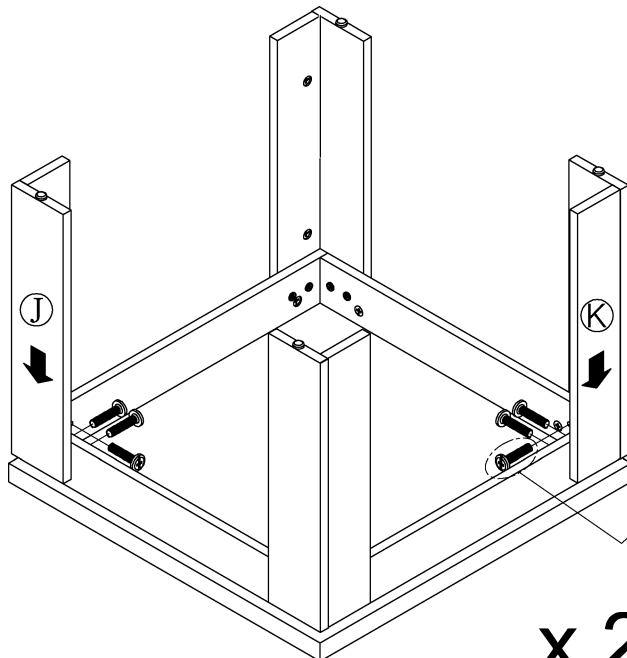
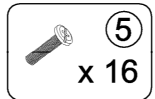


STEP 14 : Connect End table left side front leg (I) and End table left front leg (H) with assemble piece from (STEP 11).
Insert and screw Bolts (5) into the holes of assemble piece from (STEP 11).



x 2

STEP 15 : Connect End table right front leg (J) and End table right side front leg (K) with assemble piece from (STEP 11).
Insert and screw Bolts (5) into the holes of assemble piece from (STEP 11).



x 2

FINISH

