

CARE AND USE INSTRUCTIONS

Tools Required

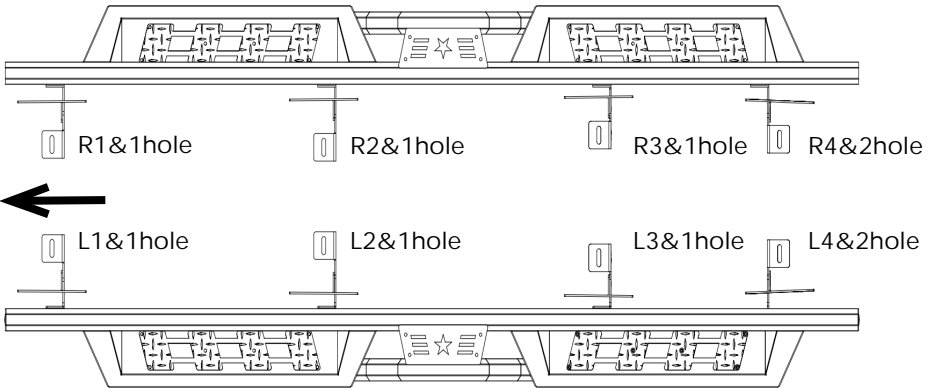
13mm/10mm Socket

Ratchet

Torque Wrench

TB240020

Passenger Right Side



Driver Left Side

Notes

Read this instruction carefully before starting installation.

Proper tools will improve the quality of installation and reduce the time required.

If missing parts or any damage found, please take a picture and contact us.

CARE AND USE INSTRUCTIONS

Step 1:

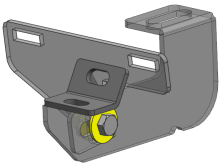
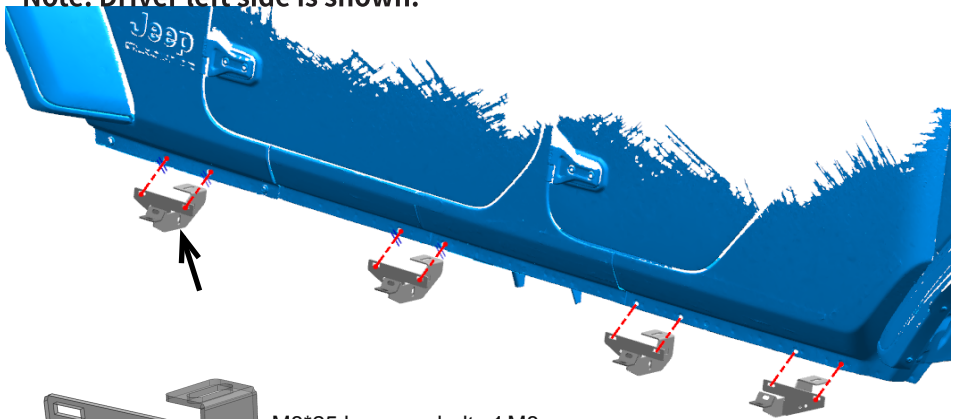
1. Remove factory rock rails if equipped. Three mounting positions each side.
2. Remove (6) M6 hex nuts on rocker panel and (3) M8 hex bolts on body frame.

Note: The step bar and factory rock rail cannot coexist.

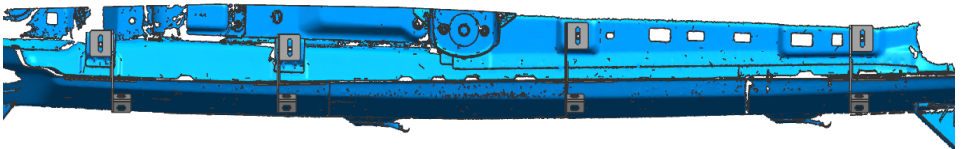
Step 2:

1. Attach the bracket to the joystick panel
2. Pair the square hole in the stand with the masked face on the joystick panel

Note: Driver left side is shown.



M8*25 hexagon bolt x1 M8
flat washer x2
M8 lock washer x1
M8 hex nut x1
A total of four positions



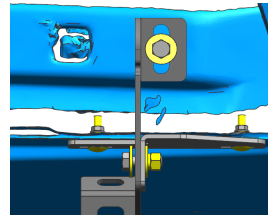
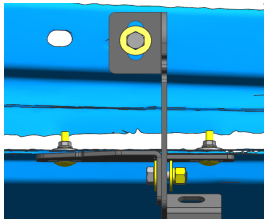
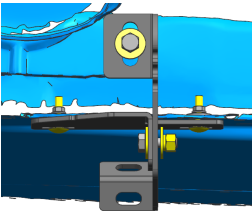
Front

Pay attention to the bracket orientation

CARE AND USE INSTRUCTIONS

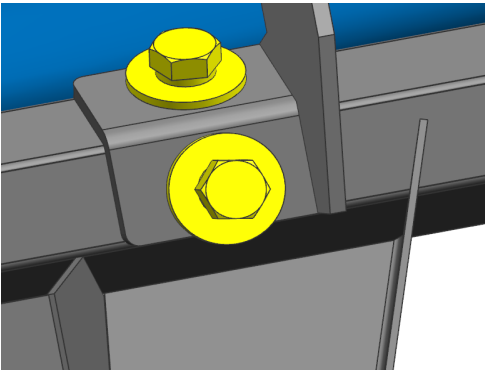
Step 3:

1. Secure the step bar on body frame with (3) M8 hex bolts, (3) M8 flat washers, (3) M8 lock washers.
2. Secure the step bar on rocker panel with (6) M6 carriage bolts, (6) M6 flat washers, (6) M6 lock washers, (6) M6 hex nuts.



Step 4:

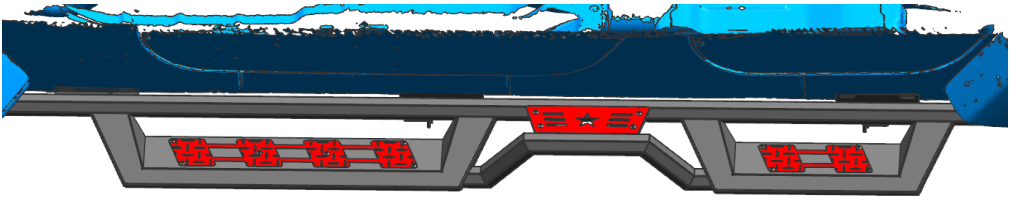
1. Secure the step bar on body frame with (3) M8 hex bolts, (3) M8 flat washers, (3) M8 lock washers.



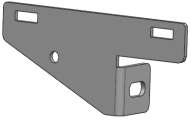
Step 4:

1. Tighten M8 hex bolts with 15 ft. lbs. torque.
2. Tighten M6 hex nuts with 7 ft. lbs. torque.
3. After the step bar installed, periodic check to ensure all mounting hardware remains secure

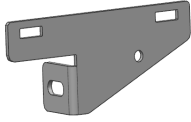
CARE AND USE INSTRUCTIONS



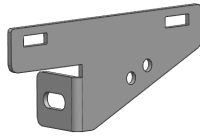
Part List:



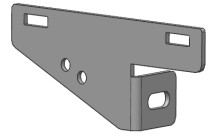
Driving side
bracket 1 x3pcs



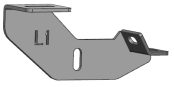
Passenger side
bracket 1 x3pcs



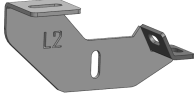
Driving side
bracket 2 x1pcs



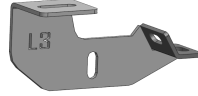
Passenger side
bracket 2 x1pcs



L1-1pcs



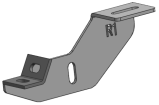
L2-1pcs



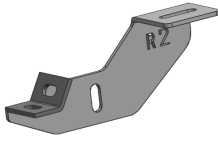
L3-1pcs



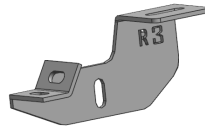
L4-1pcs



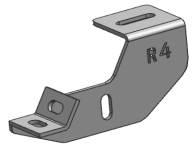
R1-1pcs



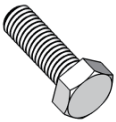
R2-1pcs



R3-1pcs



R4-1pcs



M8x25 Hexagon Bolt

×32



M6 Carriage Bolt

×16



M8 Flat Washer

×40



M6 Hexagon Nut

×16



M8 Lock Washer

×32



M6 Flat Washer

×16



M6 Lock Washer

×16



M8 Hexagon Nut

×8