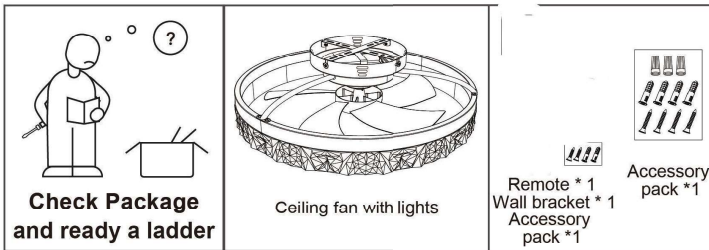


# USER MANUAL

Please read and understand this manual before any assembly or installation, compare the details with the product display presentation, and ensure that all parts are in place.

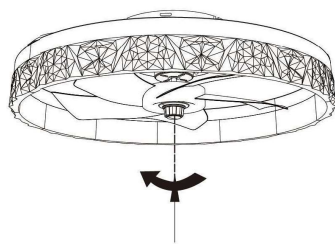
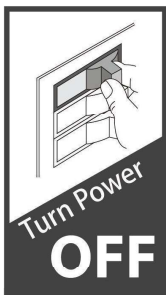
※Any questions, don't hesitate to contact us through Amazon.※

## Package contents



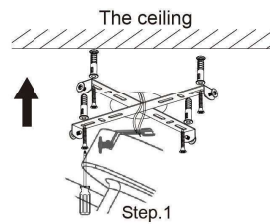
## Before installation

Do this first!

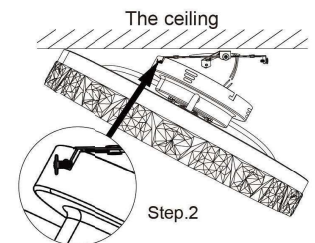


Twist the bottom of the fan blade counter clockwise and lock it into place to make it firm and safe.

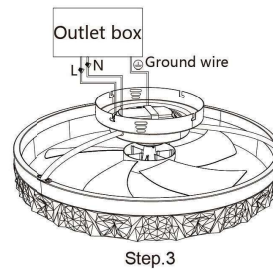
## Installation



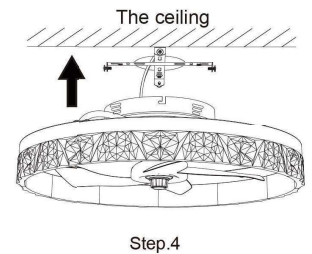
Disassemble the ceiling bracket and 4 screws from canopy, and attach them to the ceiling.



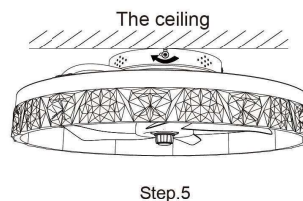
Hanging 7-shaped hole on screw of ceiling bracket.



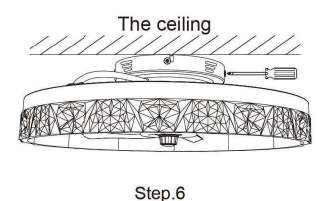
Connect the canopy and the outlet box electrical wire according to the mark.



Remove the S-hook, snap the 7-shaped hole of the fan light holder onto the ceiling bracket.



Rotate the ceiling fan and snap the 4 screws into the 7-shaped holes.



Tighten the 4 screws to complete the installation.

# 2.4G DC Fan Lamp Controller Specifications

## Product Introduction:

This product uses 2.4G wireless digital remote control technology, remote control one-to-one control, simple and convenient operation, strong anti-interference ability.

## Technical Parameters:

Model: 2.4G AC fanlight controller

Wall switch sequence:

full light/white light/yellow light

Input voltage:

AC100V-130V 50/60Hz

Output voltage:DC70-110V

LED output power: 25-36W

Motorrted power:<25W

ed:1-6 gears

hour/2 hours

Recewving method:RF2.4G

Remote control distance: 8-20 meters

Remote control battery:No.7 1.5VX2

## Remote control matching code:

Turn on the power and Press and hold the light pairing key within 5 seconds of the light on,When you hear a beep or a light flashes,the code match is successful.If you need to match the code a second time,you need to wait 30 seconds before turning on the power and repeat the above operation.

## CAUTION:

The electronic switch is not an isolated product and needs to be operated by professional personnel during

## installation

The dlectronic switch is triggered by the remote control,and the wireless frequency of the remote control transmitter is

**2.4GHz.**

