

MULTI-STYLE LAMBREQUIN VALANCE KIT

EASY TRACEABLE NO-SEW VALANCE

Select fabric to match your decor. Use by-the-yard fabric or any cotton household fabric item (pillowcases, tablecloth, curtain panel etc.) Use 100% cotton lining.

**Fabric not included*

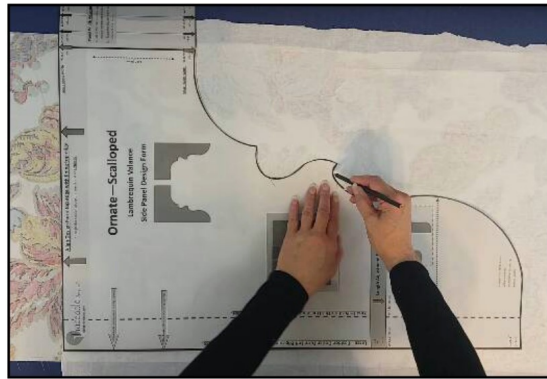


VISIT [YOUTUBE.COM/TRACEABLEDESIGNER](https://www.youtube.com/traceabledesigner) FOR STEP-BY-STEP VIDEO TUTORIALS



Use the included fusible fabric backing to add lining to your fabric section.

**This process will create a fully lined stiff fabric section.*



Position the Design Form over the lined fabric section and trace around the edges. Then follow the traced line to cut out the valance side panel.

**Use the same process to create side and center valance panels.*

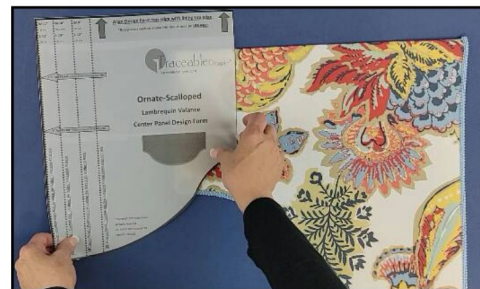


Add no-sew trim to panel edges.

**Use iron-on trim, tube glue, or a glue gun.*



Use a 1" curtain rod



Hang valance side and center panels using no-sew rod pockets. Use the center panel design form to make center panels or panel connectors. Use the included Velcro to make fasteners to hang panel connectors. Secure panel connectors between side and center panels. Adjust panels on the rod for a custom fit.

** Make any number of center panels and connector panels to fit your window size.*