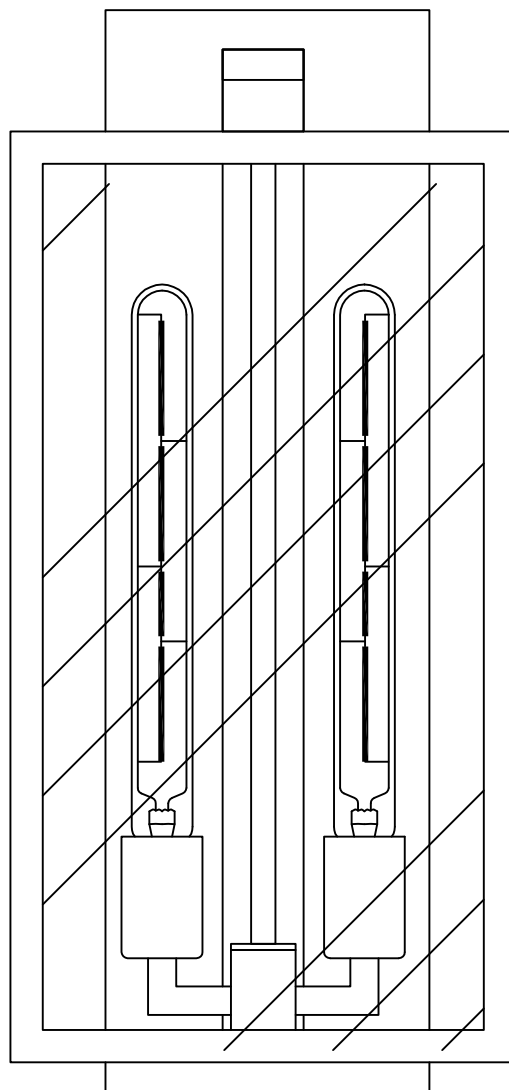


Installation Instructions



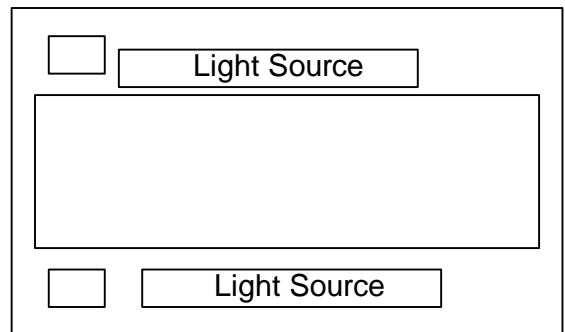
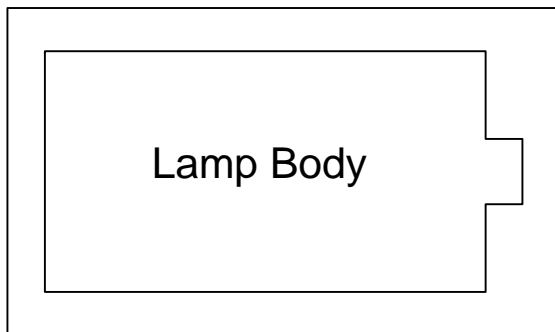
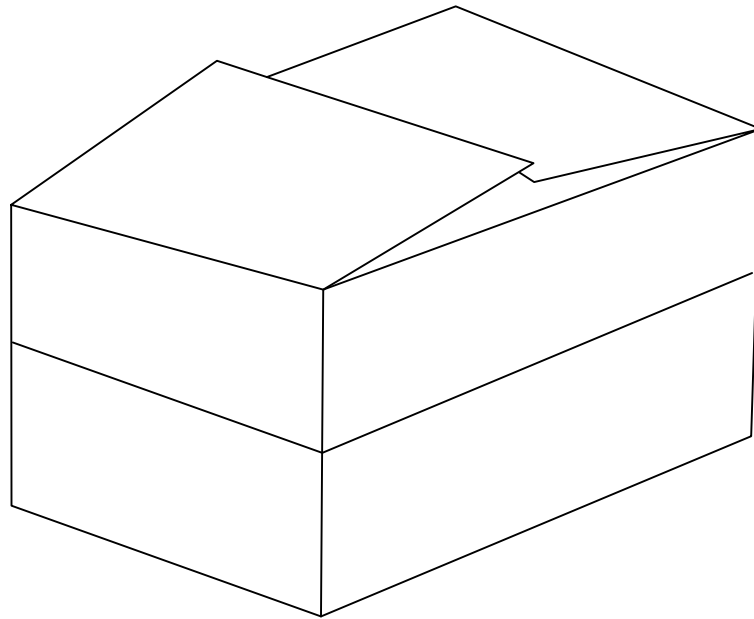
Chandelier Installation and Safety Standards

The installation of a chandelier is a crucial step in ensuring its safety. Chandelier safety standards dictate the process of installation, including the tools and equipment that can be used, the methods of securing the chandelier, and the location of the chandelier.

Securing the chandelier is a crucial step in the installation process. Chandelier safety standards dictate that the chandelier must be securely attached to a suitable support, such as a ceiling joist, to prevent it from falling. This includes ensuring that the support is strong enough to bear the weight of the chandelier, and that the chandelier is properly balanced to prevent it from tipping or swaying.

Furthermore, the chandelier must be secured using suitable hardware, such as screws or bolts, that are strong enough to bear its weight. The hardware must be properly installed and tightened to ensure that the chandelier is securely attached. Regular inspections of the hardware are also necessary to detect and repair any damage or wear promptly.

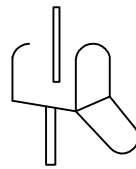
Packaging Diagram



Internal Packing List:

1. Lamp body + glass cover + light source + accessories package
2. Light source + accessories package

Before assembly:

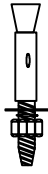


- ★ Please read all the instructions carefully
- ★ Keep the instruction manual for future reference.
- ★ Separate and inventory all parts and hardware
- ★ Read each step carefully and follow the correct installation sequence
- ★ To avoid losing any parts during assembly, we recommend not moving the lamp before completing the assembly. Always place the product on a flat, firm, and stable surface
- ★ Keep all small parts and packaging materials of this product away from babies and children, as they may cause serious injury

★Product Parameters: :

light: G4*36pcs Watt: 3W (single) color temperature: 3000K

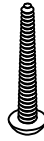
Accessories List



2pcs



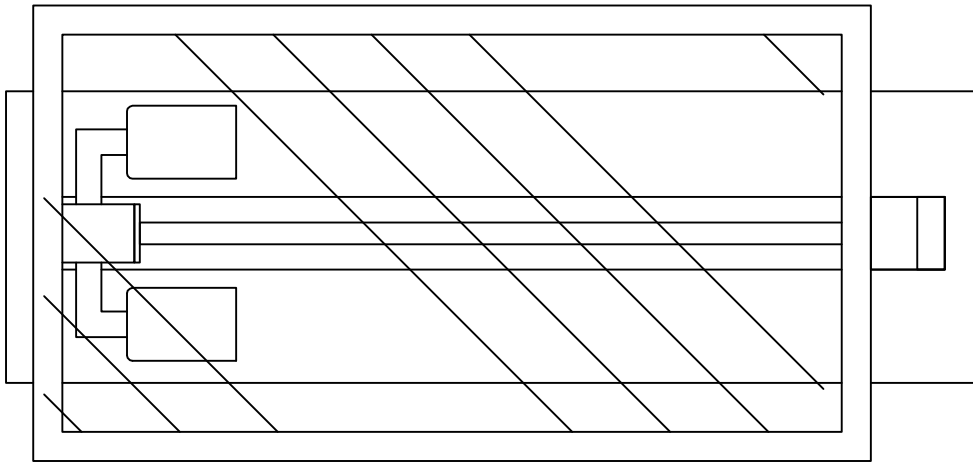
2pcs



2pcs



2pcs



A.Lamp Body-1pcs

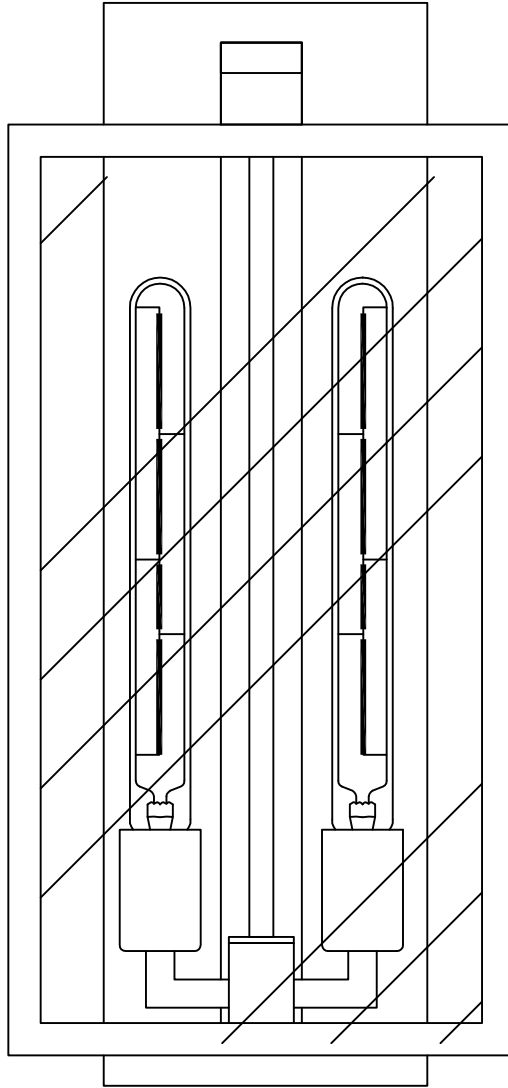


B.Light Source-2pcs

① Lamp body assembly:

(1) Find the lamp body from the list.

(2) Take out the light source and screw two E26 bulbs into the lamp holder. (As shown in the figure below)



②Lamp body assembly:

- (1) Remove the hanging board and connect it to the wall.
- (2) Connect the main power line to the main line of the lamp body and lock the ceiling plate.

