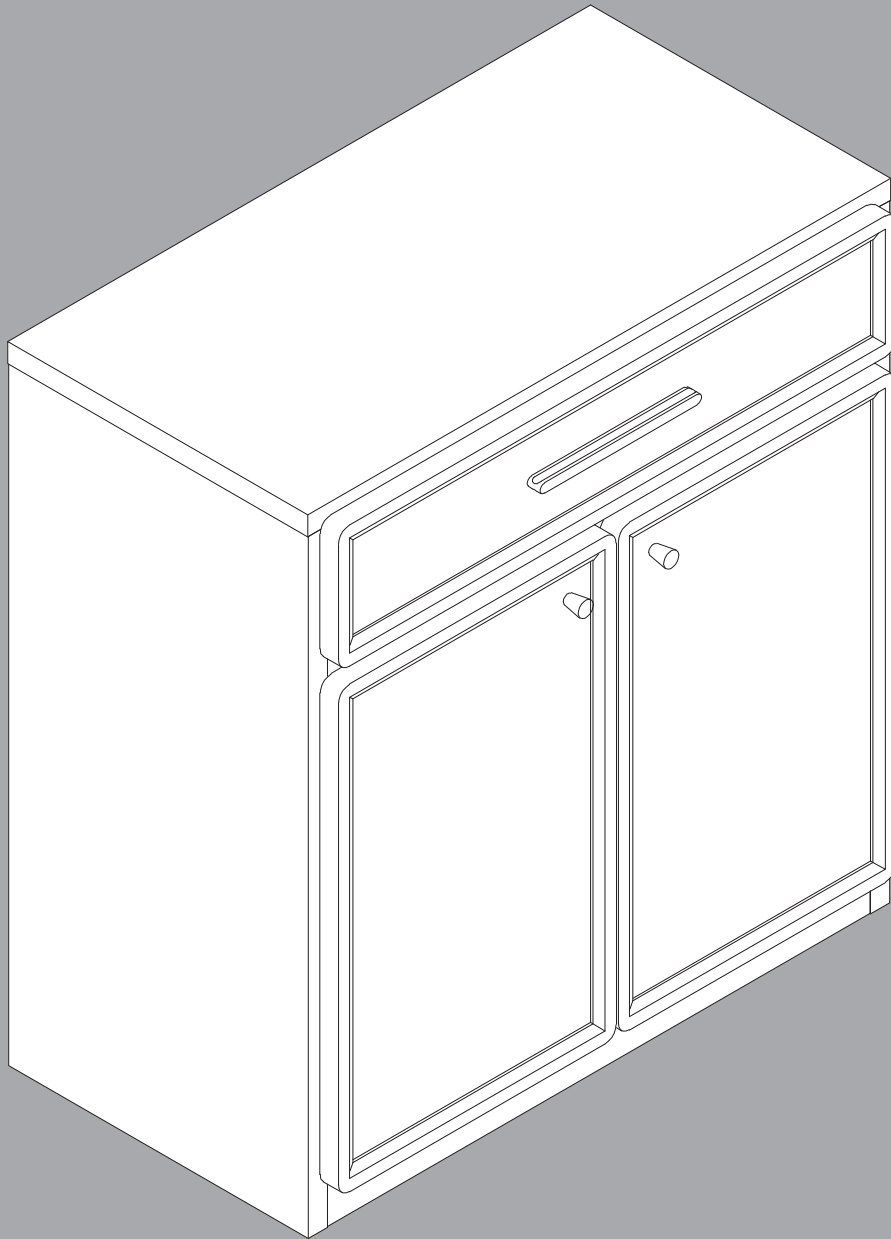


SICOTAS

SC122A1XLTY1176 | SC122A1XBNY1512 | SC122A1XDKY1513



Crescent Collection

Assembly Instructions

Before beginning the assembly process, please read and save these instructions for reference. Following these guidelines will ensure a smooth and successful assembly of your product.

1. Part Identification:

Carefully separate and identify all the parts included in your package. Confirm that you have all the components listed in the instruction manual. This step will help you avoid any missing or misplaced parts during assembly.

2. Work Surface:

To prevent any scratches or damage to the product, assemble it on a soft mat or a similar protective surface. This will provide a cushioned area for the components and protect the surfaces from unwanted marks.

3. Step-by-Step Assembly:

Follow the assembly instructions provided, proceeding one step at a time. Take care to understand each step properly before proceeding to the next one. This sequential approach ensures that the assembly is done correctly and minimizes the chance of errors.

4. Proper Screw Seating:

When attaching screws and nuts, it is essential not to fully tighten them until all screws are correctly seated. By partially tightening each screw and nut initially, you can ensure that they are aligned properly and fit securely before final tightening.

5. Avoid Over-Tightening:

While each screw and nut should be tightened correctly, it is crucial not to over-tighten them. Over-tightening can cause damage to the product or compromise its structural integrity. Use the appropriate amount of force to secure the components without excessive tightening.

SICOTAS customer help center:

If you encounter any questions or problems during the assembly process, please do not hesitate to contact us.

We strive to provide excellent customer support and will respond to your inquiries within 24 hours. Our team will offer you a suitable solution to address any concerns you may have.



Email:
service@sicotas.com



Website:
www.sicotas.com



Phone:
(833) 742-6827



Official Website:



WhatsApp:



YouTube:



Instagram:

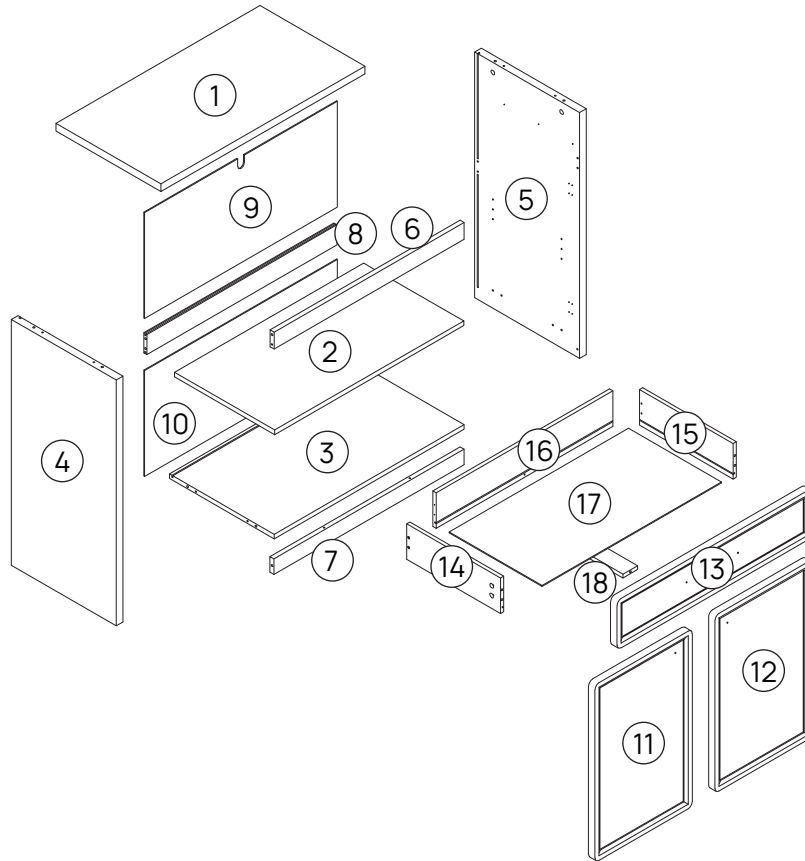


Facebook:

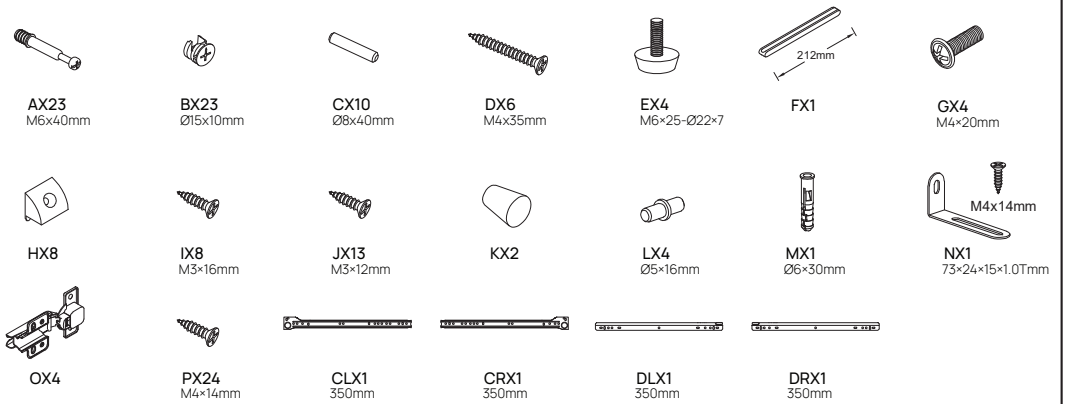


TikTok:

Parts List

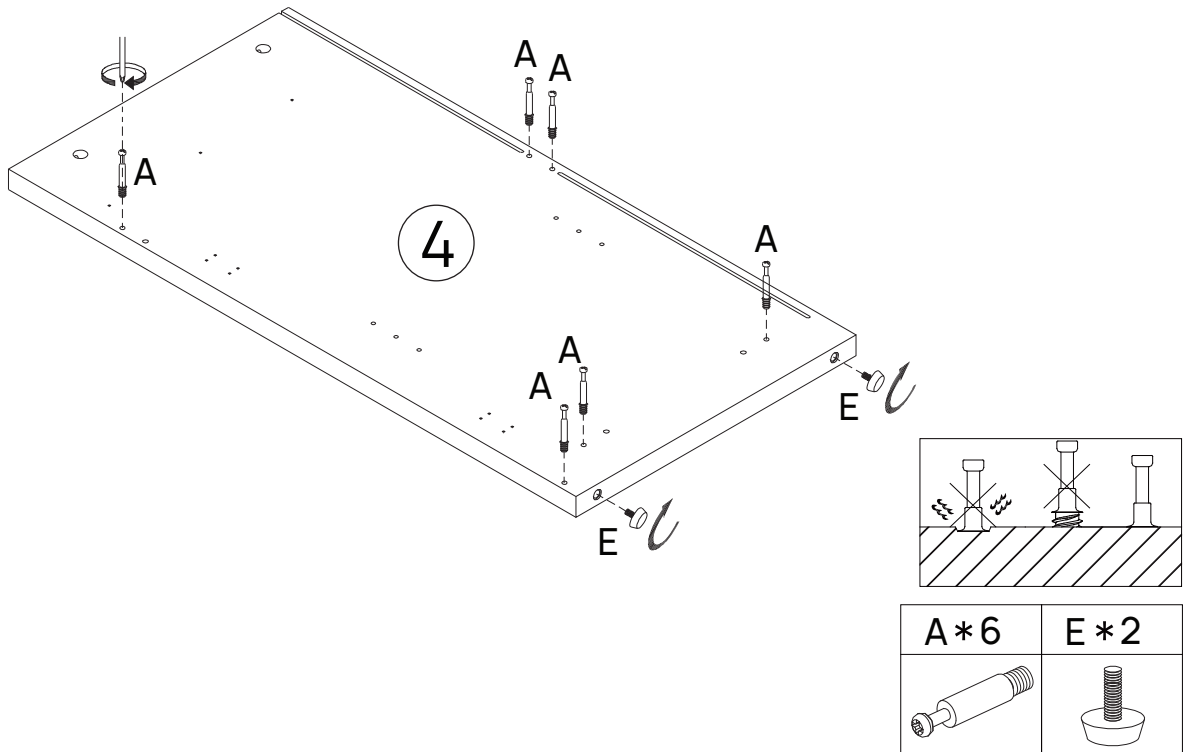


Hardware List

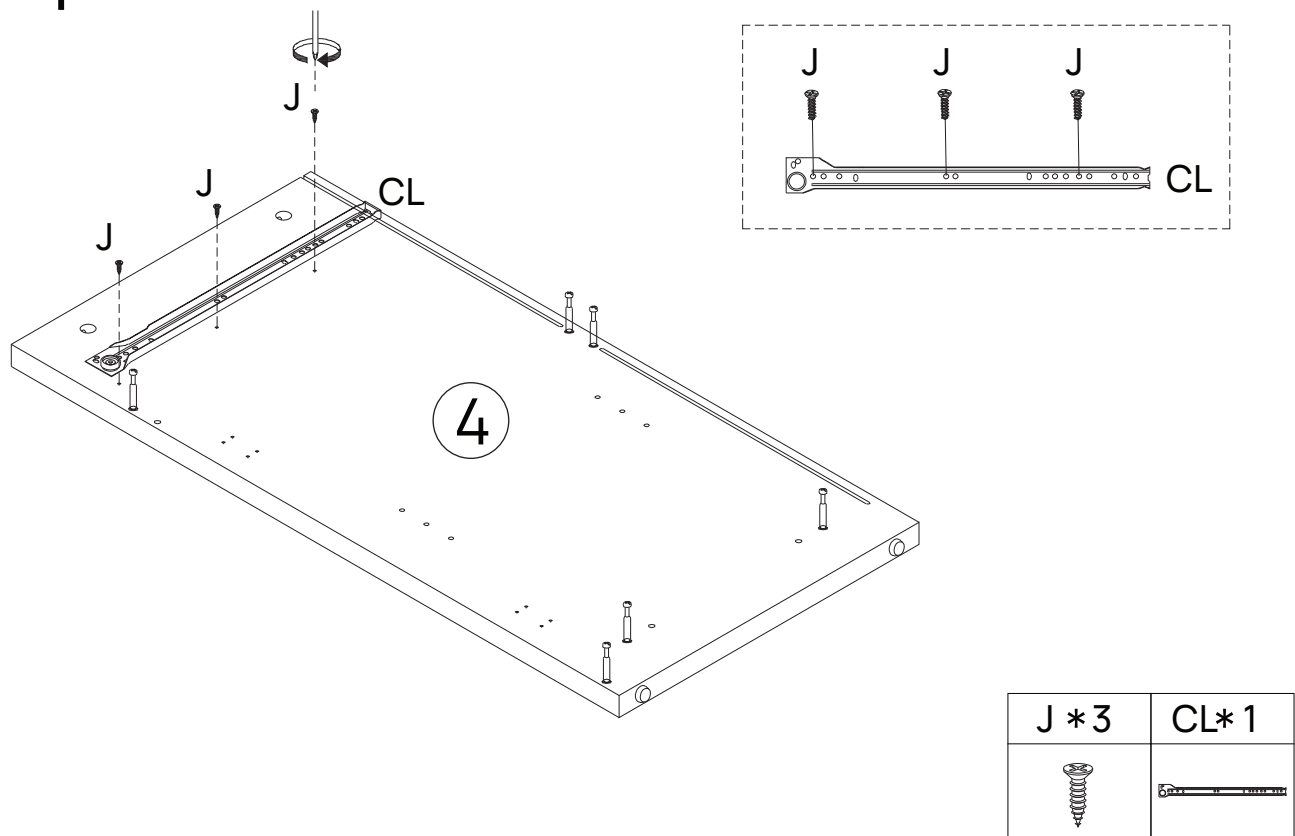


Code	Description	Quantity	Code	Description	Quantity
A	M6x40mm Cam bolt	23+2	K	Handle	2
B	Ø15x10mm Cam lock	23+2	L	Ø5x16mm Shelf support pin	4+1
C	Ø8x40mm Wood dowel	10+1	M	Ø6x30mm Plastic expansion screw	1
D	M4x35mm Screw	6+1	N	73x24x15x1.0Tmm Lock wall accessories	1
E	M6x25-Ø22x7 Adjustable foot	4+1	O	Hinges	4
F	212mm Handle	1	P	M4x14mm Screw	24+2
G	M4x20mm Handle screw	4+1	CL	350mm Drawer runner set	1
H	Backboard clip	8+1	CR	350mm Drawer runner set	1
I	M3x16mm Screw	8+1	DL	350mm Drawer runner set	1
J	M3x12mm Screw	13+1	DR	350mm Drawer runner set	1

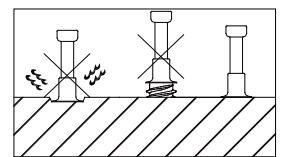
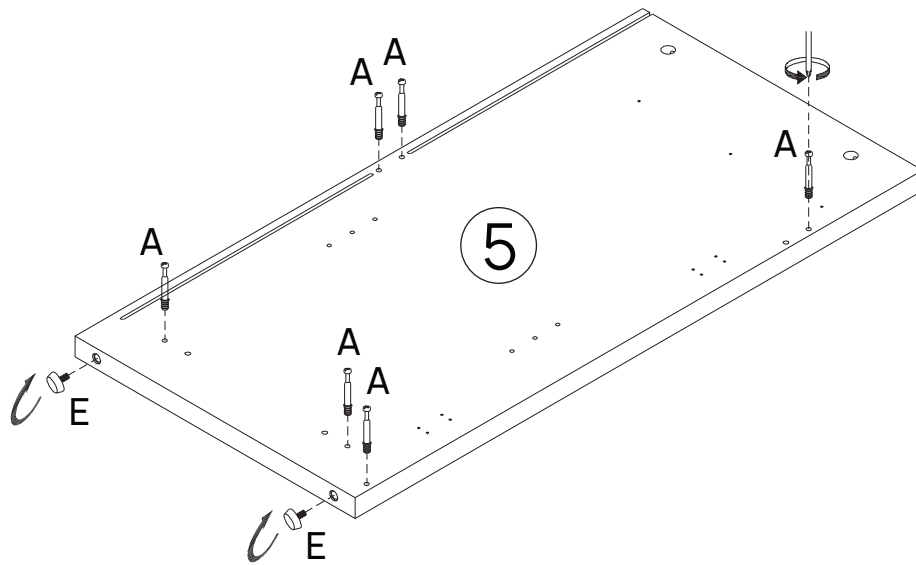
Step 1

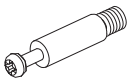



Step 2

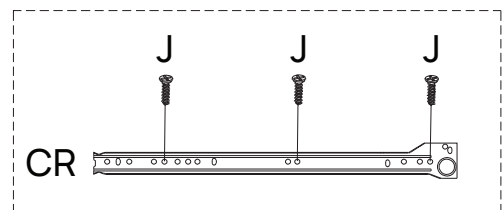
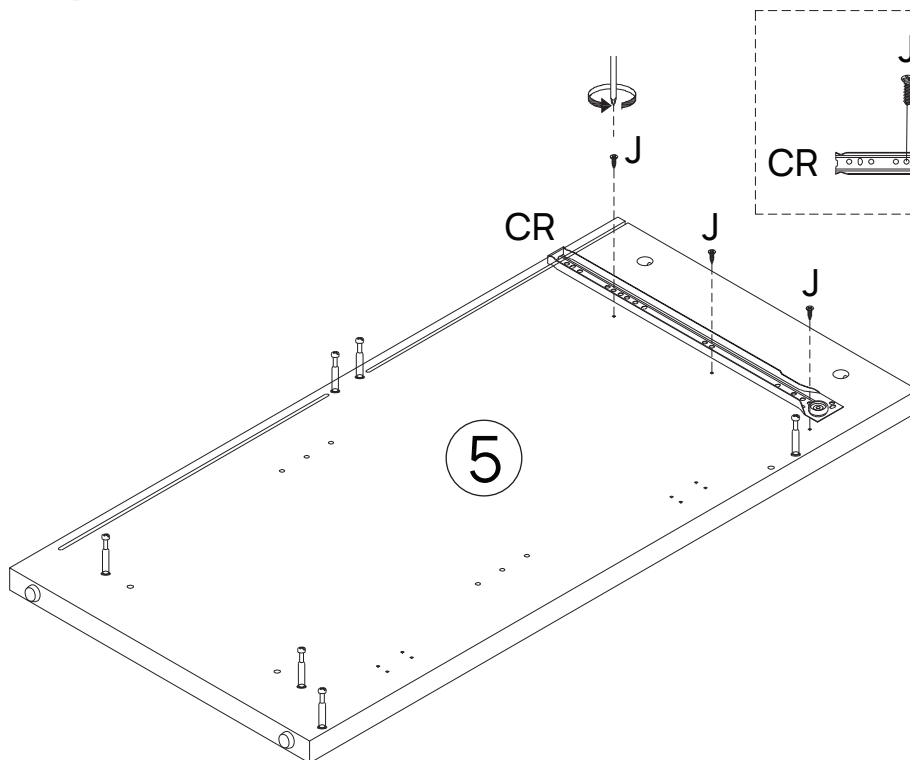




Step 3



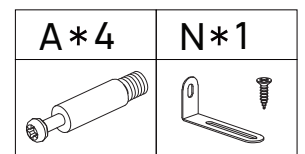
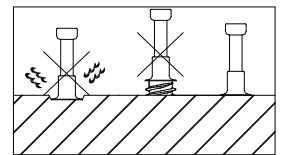
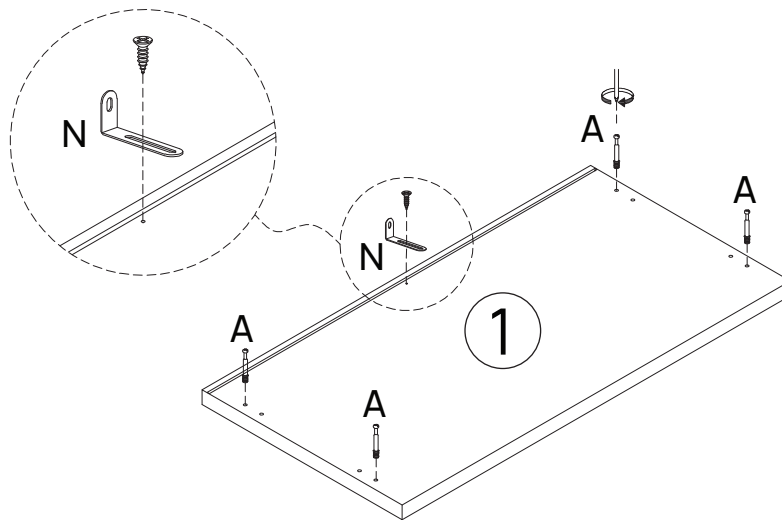
A*6	E*2
	

Step 4

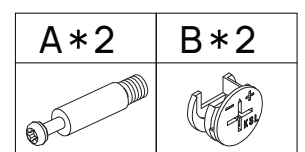
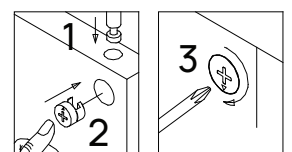
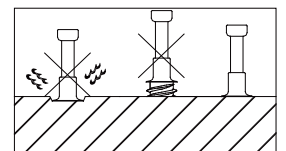
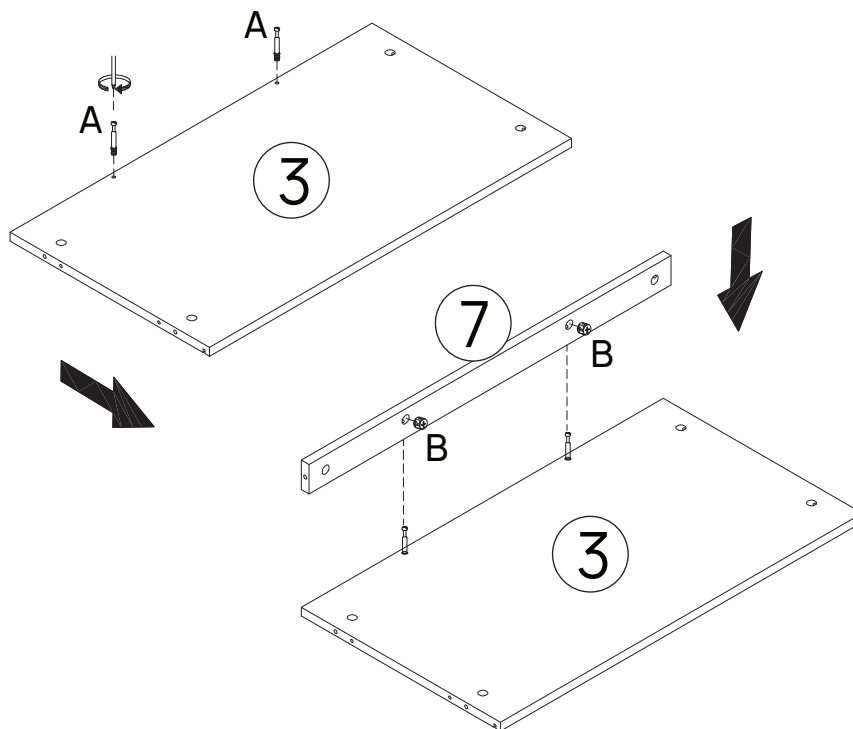


J*3	CR*1
	

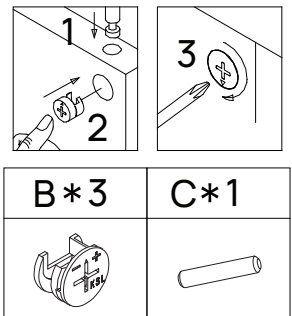
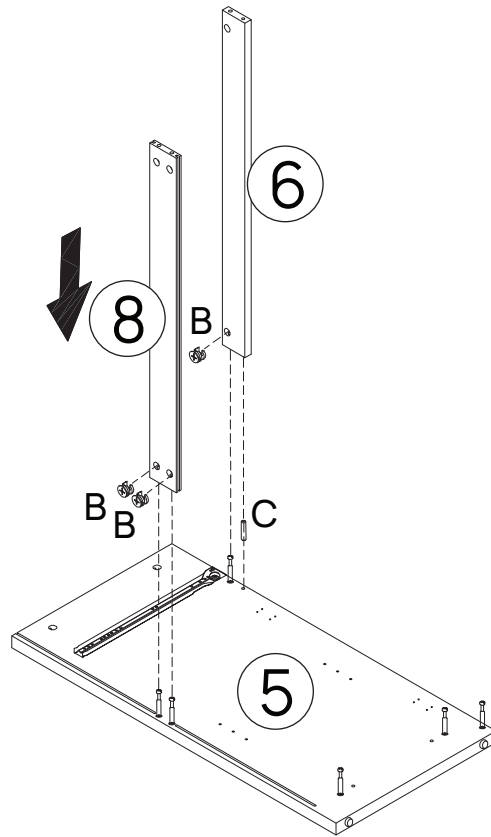
Step 5



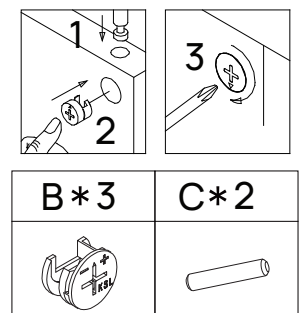
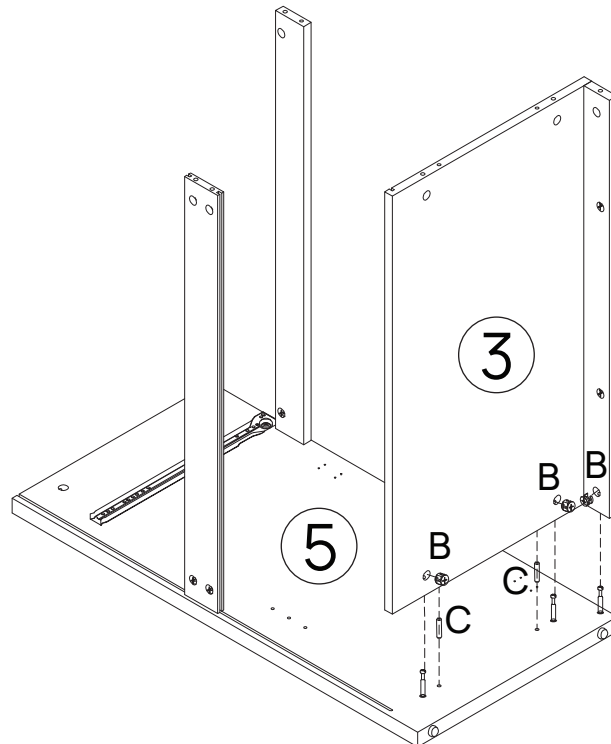
Step 6



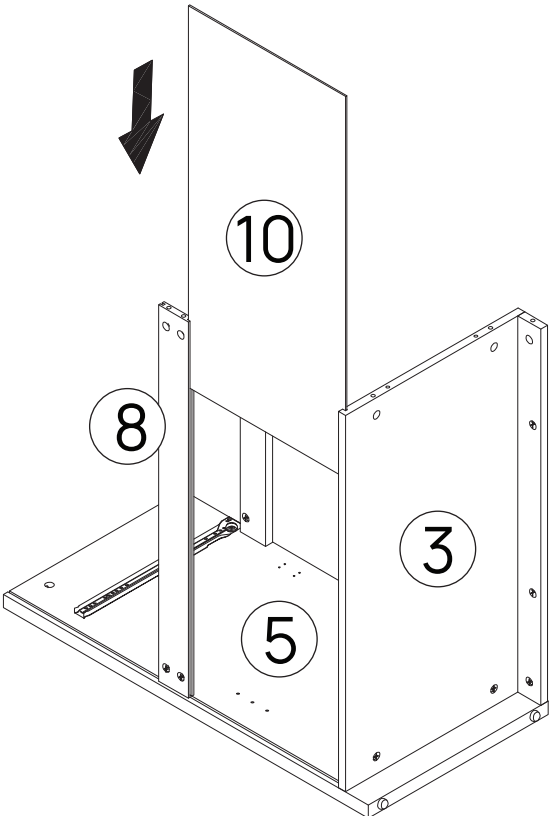
Step 7



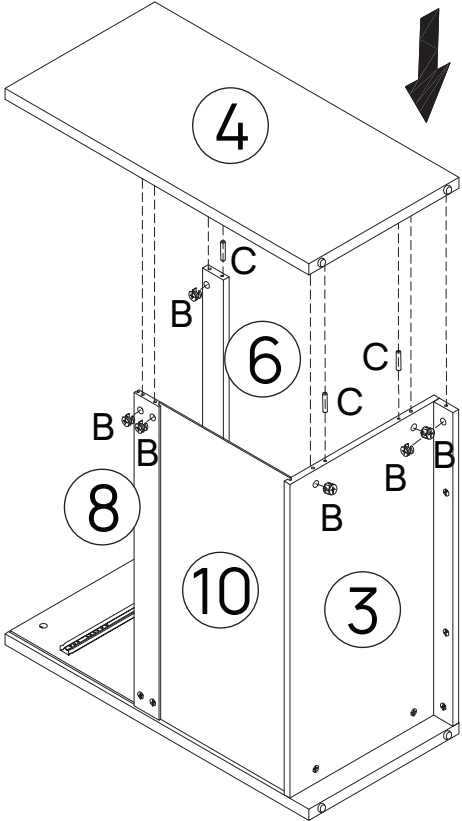
Step 8

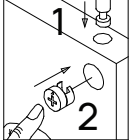
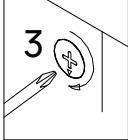




Step 9

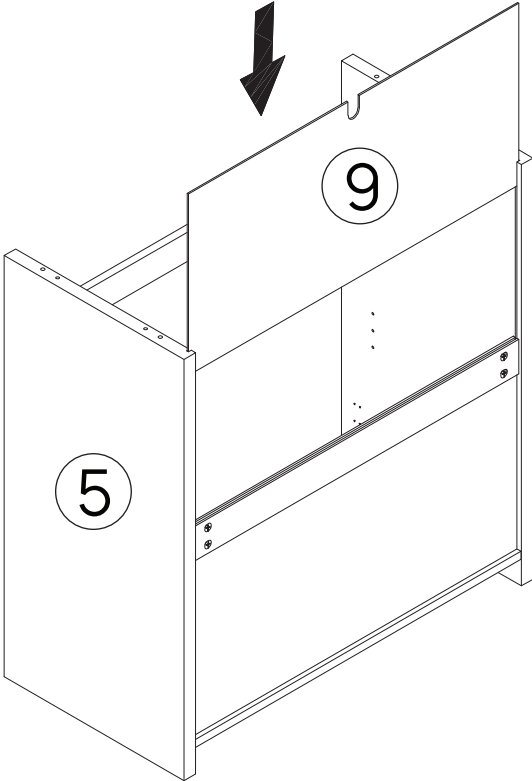


Step 10

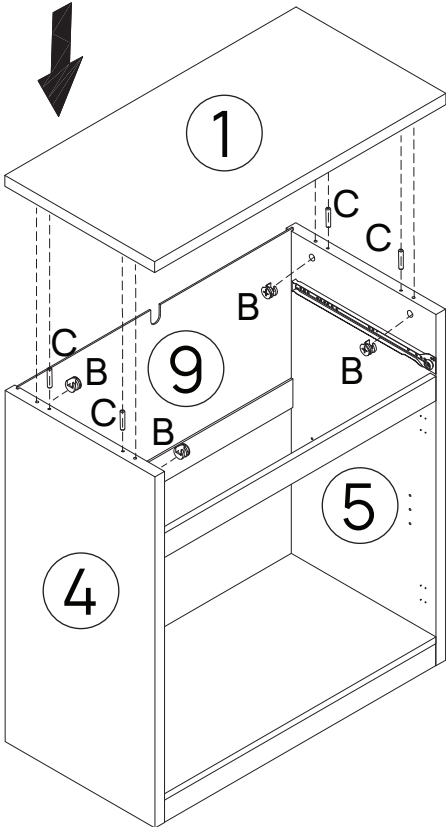


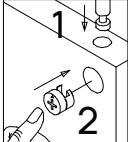
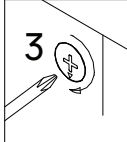
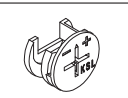
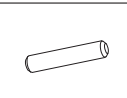
	
B*6	C*3
	

Step 11

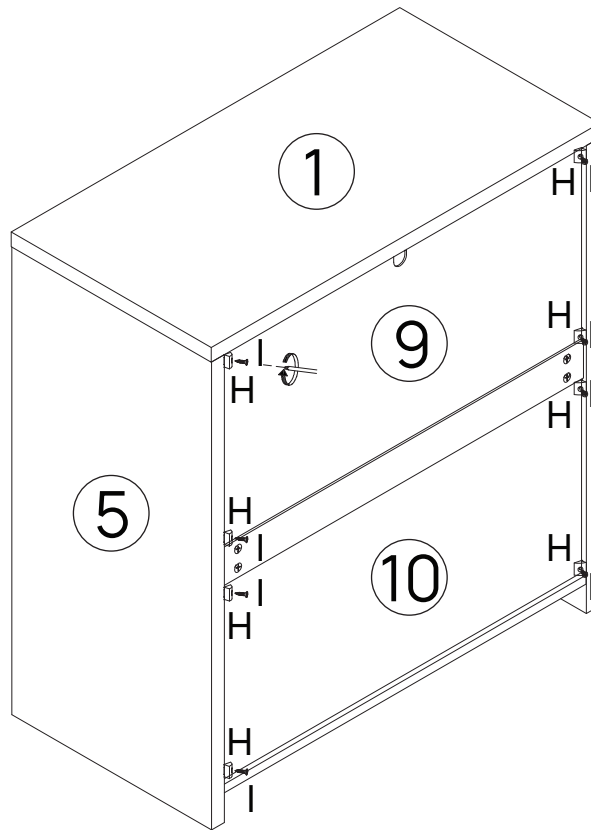


Step 12



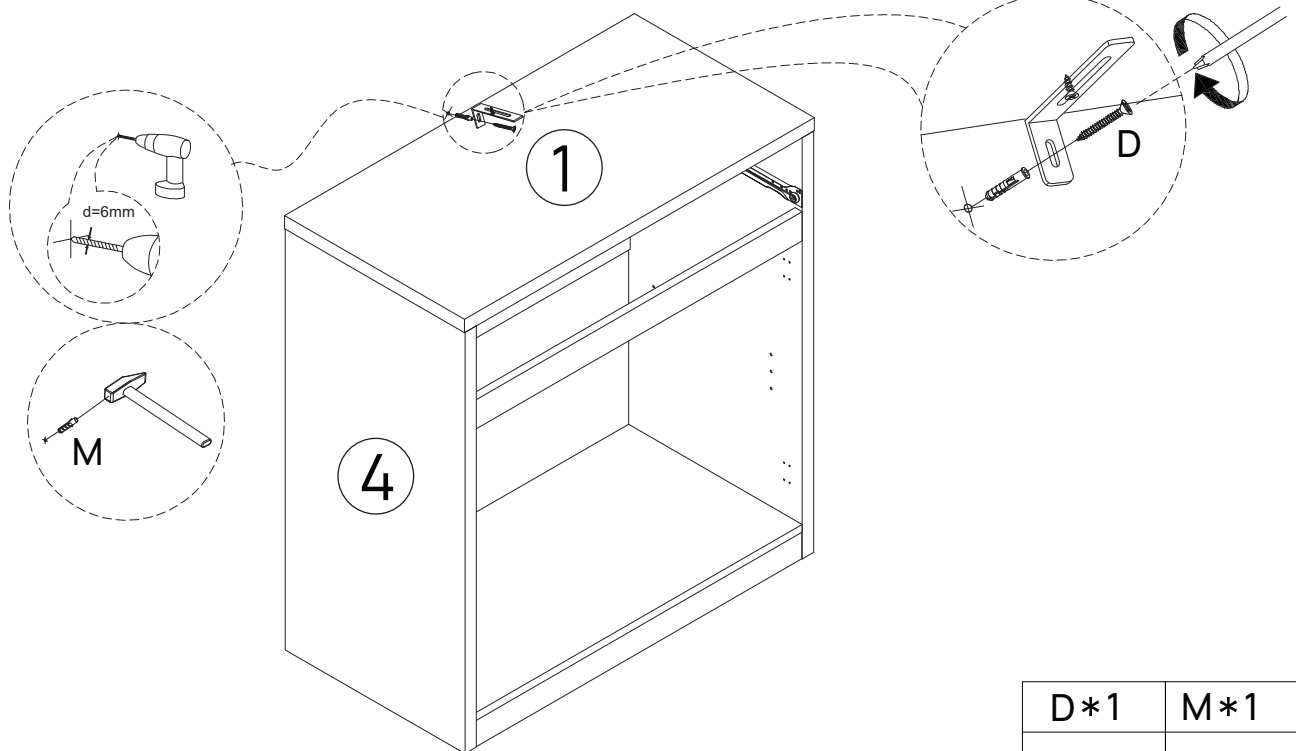
	
B*4	C*4
	

Step 13



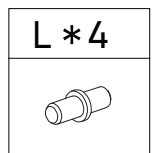
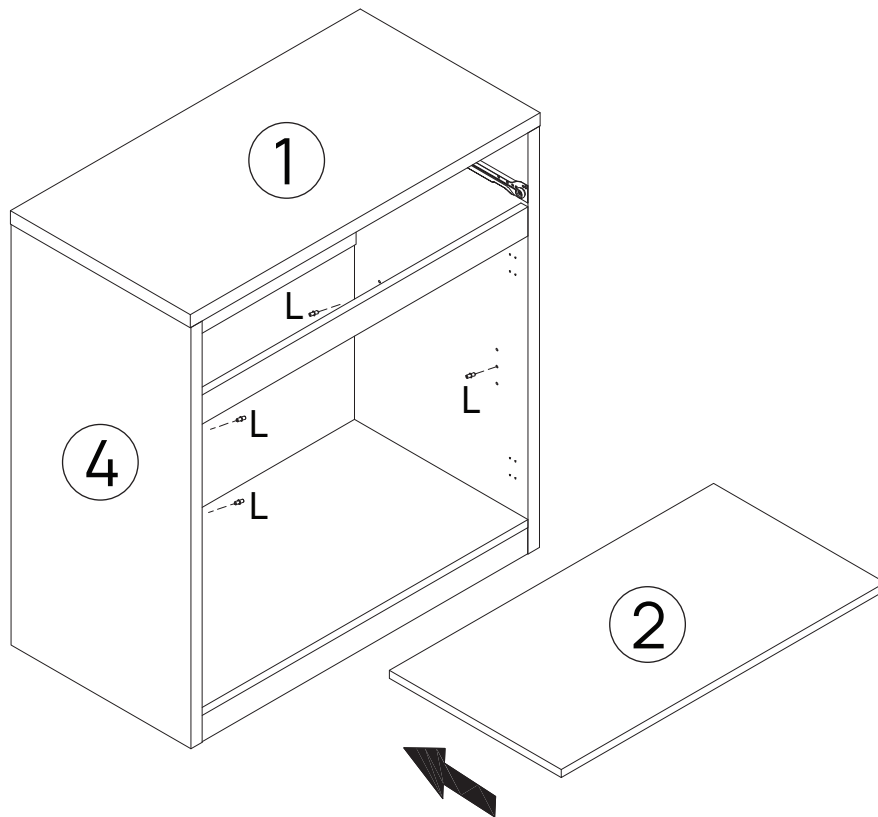
H*8	I*8

Step 14

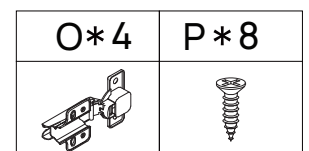
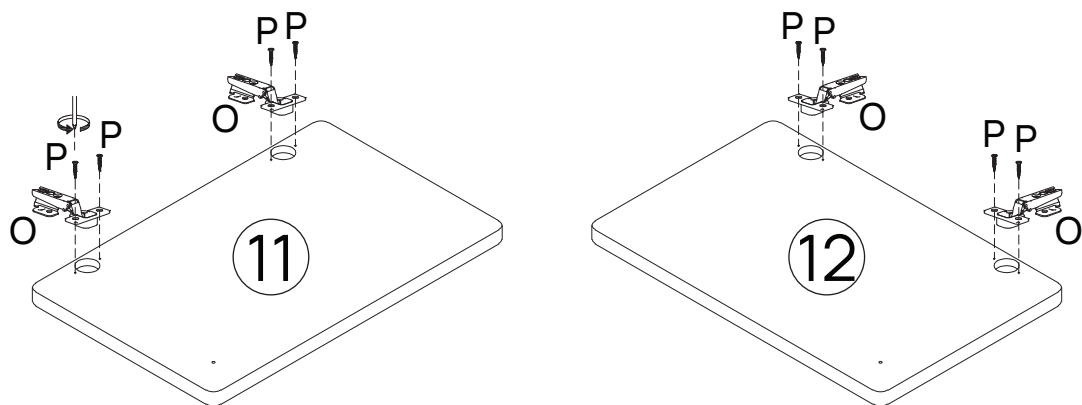


D*1	M*1

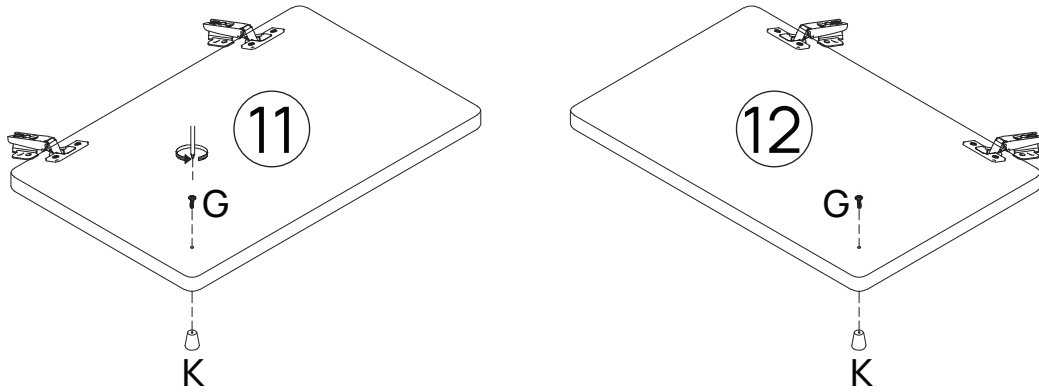
Step 15





Step 16

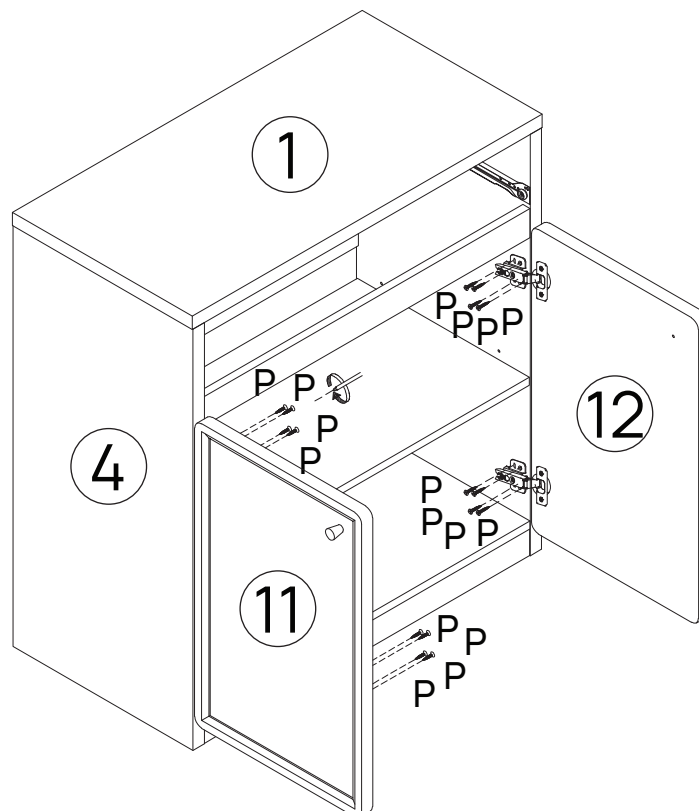



Step 17



G*2	K*2
	

Step 18

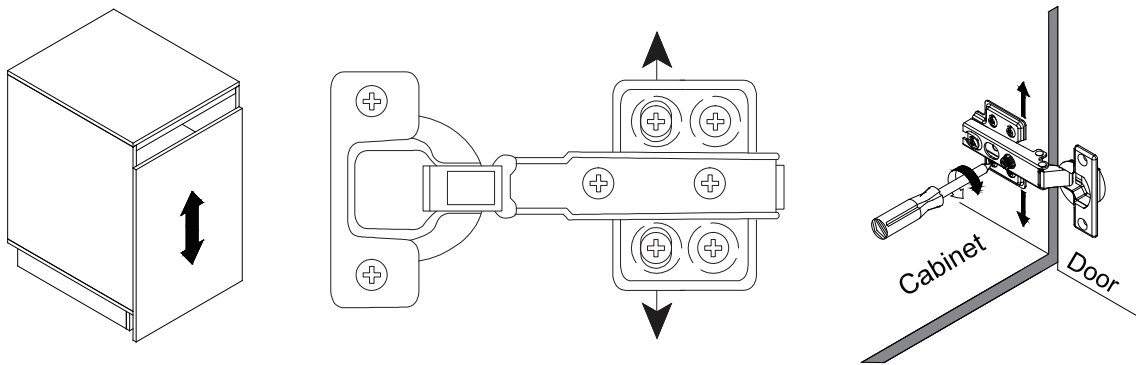


P*16


Cabinet Door Adjustment Instructions

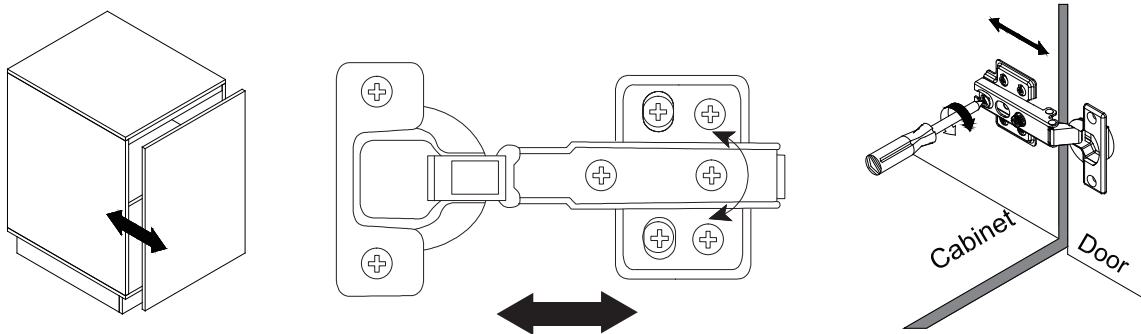
Height adjustment:

- Locate the height adjustment screws on the hinge.
- Use the Phillips screwdriver to either tighten or loosen the screws to raise or lower the cabinet door as desired.

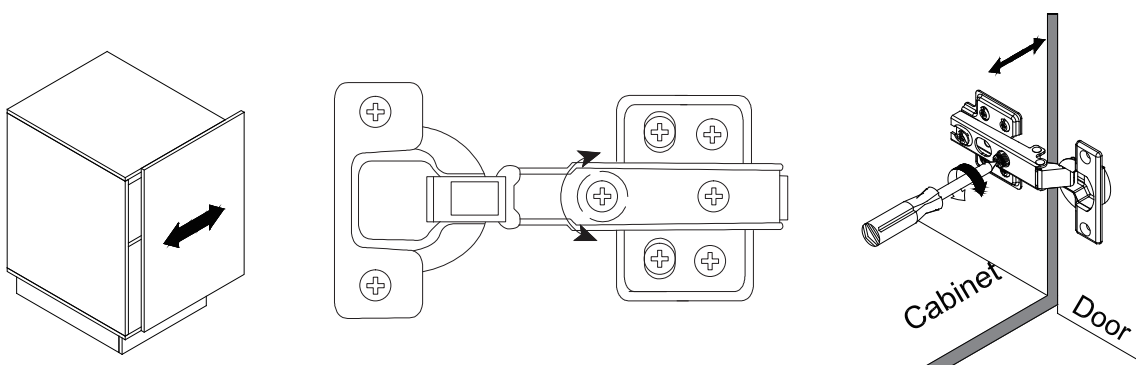


Side-to-side adjustment:

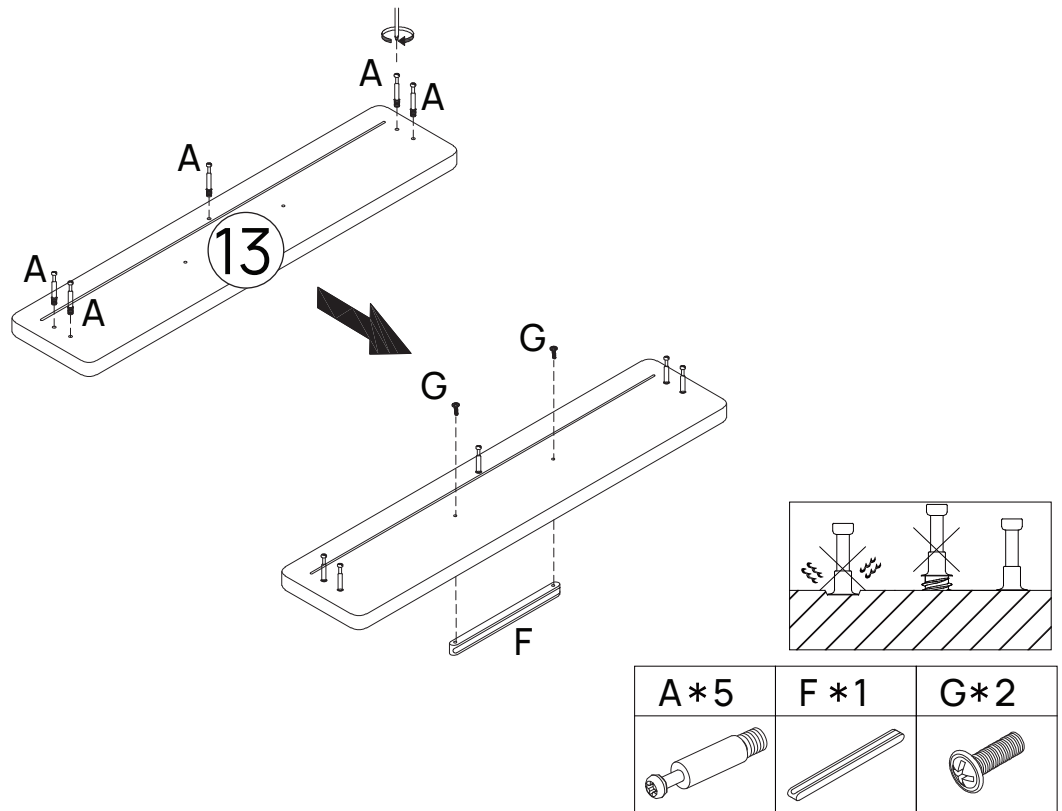
- If the cabinet door needs to be moved closer to or away from the cabinet frame, locate the side-to-side adjustment screws on the hinge.
- Use the Phillips screwdriver to adjust these screws and gradually move the door in the desired direction.



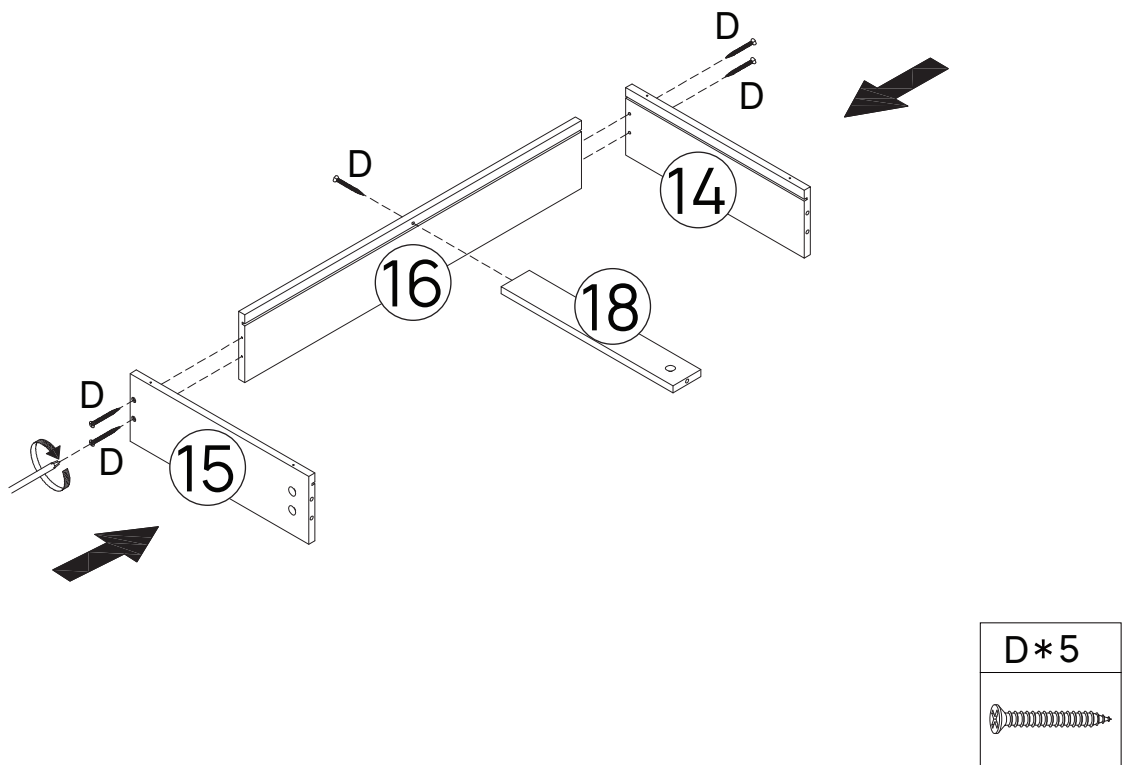
Depth adjustment (if applicable):



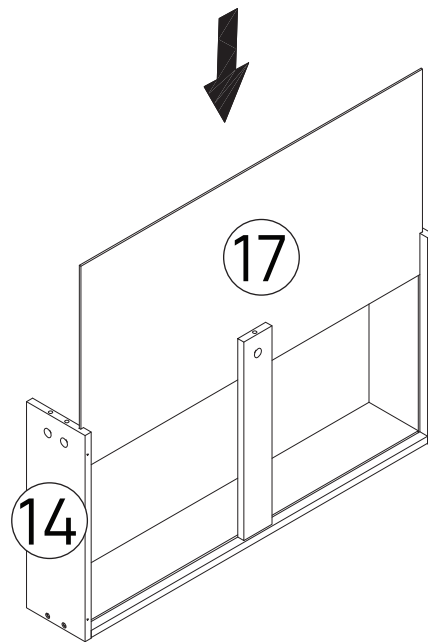
Step 19



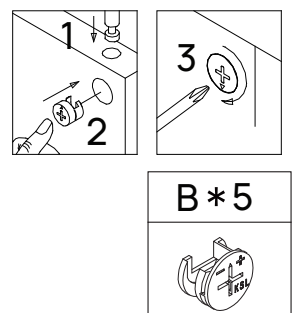
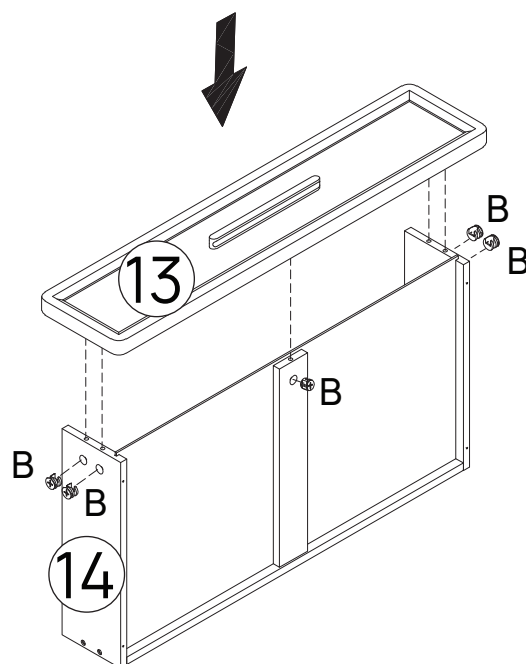
Step 20



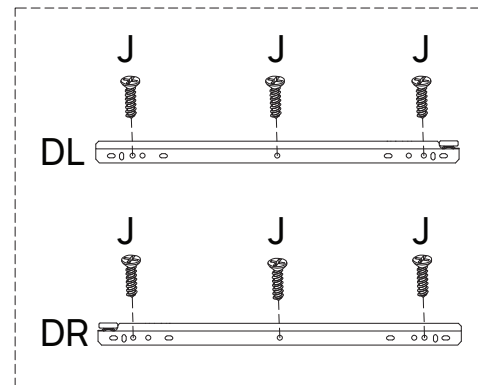
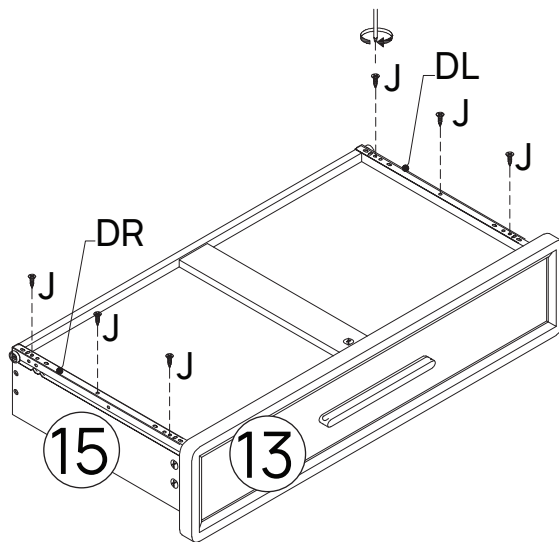
Step 21






Step 22



Step 23



J * 6	DL * 1	DR * 1
		

Step 24

Please note that the drawers must be installed as indicated by the arrows.

