

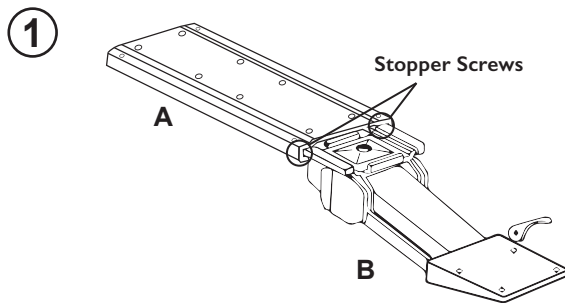
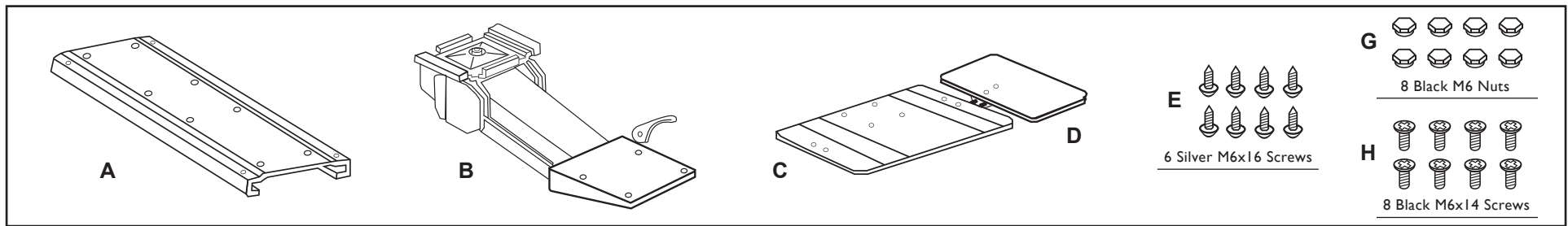
■ ASSEMBLY & OPERATING INSTRUCTIONS:

IMPORTANT: Before using your KT2:

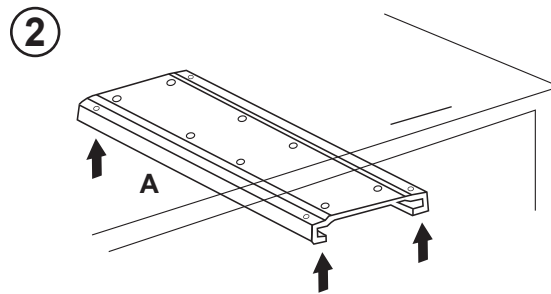
- 1** Read and clearly understand the contents of this manual
- 2** Understand how to adjust KT2 correctly
- 3** Practice adjusting KT2 with nothing on it.

KT2 allows you to easily adjust the height & angle of your keyboard to optimize your typing posture.

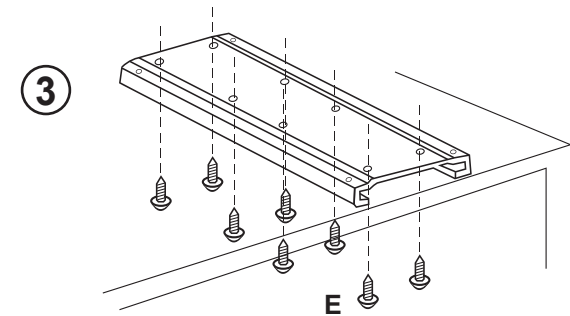
IMPORTANT: BEFORE using KT2 or placing a keyboard & mouse on KT2, practice adjusting KT2's height & angle.



- 1** Remove the **ARM (B)** from the **Rail (A)**.
 - A. Remove two **Stopper Screws** from the front edge of the **Rail (A)**.
 - B. Slide the **ARM (B)** off of the **Rail (A)**.
 - C. Re-install the two **Stopper Screws** after completing the installation.

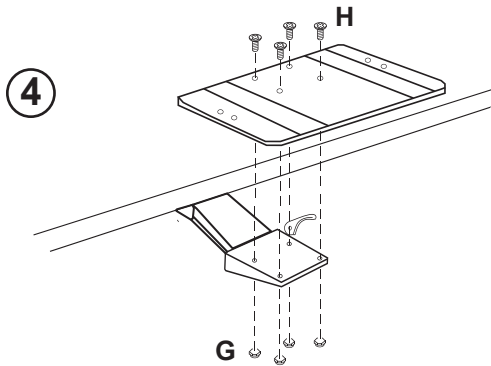


- 2** Align the **Rail (A)** with the edge of your desk

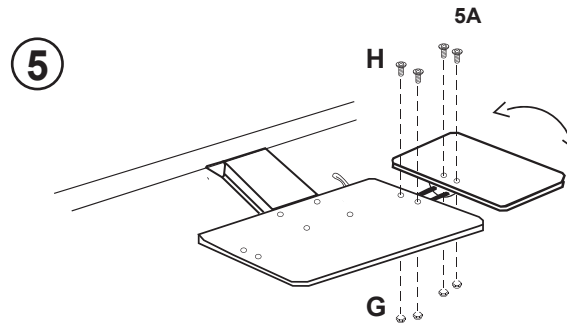


- 3** Use **8 E** screws to connect the **Rail (A)** to the bottom of your desk.

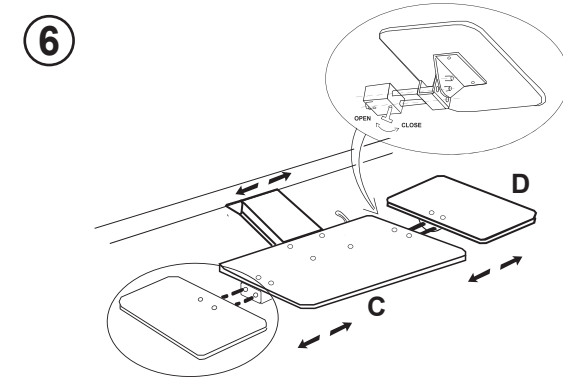
■ ASSEMBLY & OPERATING INSTRUCTIONS:



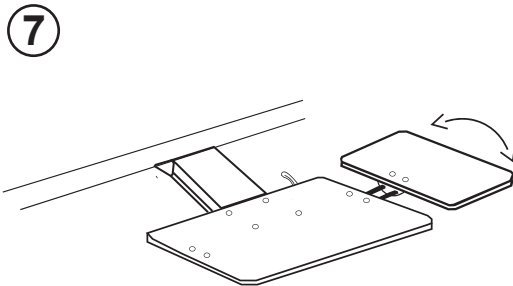
4. Attach the **Keyboard Panel (C)** to the mounting panel with **4 H Screws & 4 G nuts**.



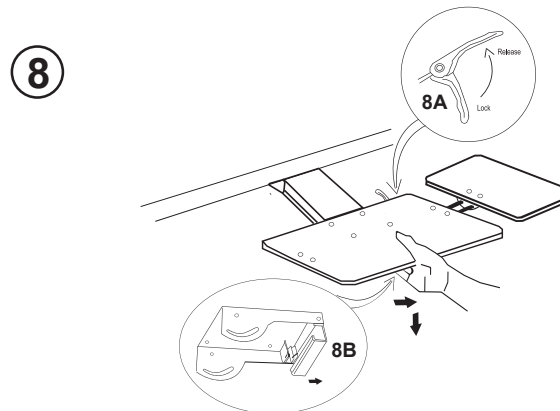
5. Connect the metal **Mouse Pad Bracket** to the keyboard tray using **2 H Screws & 2 G Nuts**.
5A. Connect the **Mouse Pad** to the **Mouse Pad Bracket** using **2 H Screws & 2 G Nuts**.



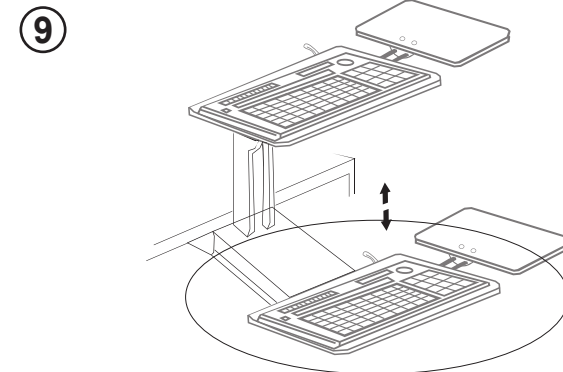
6. The **Mouse Pad (D)** attaches to the right or left side of the **Keyboard Tray (C)**. Release the thumb screw on the attachment to move the Mouse Pad closer to or farther away from the Keyboard tray.



7. Press down to tilt the **Mouse Pad** and adjust its' angle. If the mouse pad is too loose, tighten the **2 screws** on the mouse pad mounting bracket.



8. The **Keyboard Tray** slides in/out by pushing/pulling.
8A. To adjust the **Keyboard Tray's** angle, release the lever under the keyboard tray.
8B. To raise/lower the **Keyboard tray**, squeeze the handle under the front of the keyboard tray. Release it to lock the keyboard tray in place.



9. **KT2** is adjustable from below your desk to above your desk. For fast adjusting: remove your mouse, release the lever (8A) & squeeze the handle (8B). When you've reached the perfect height, release the handle and then tighten the lever.