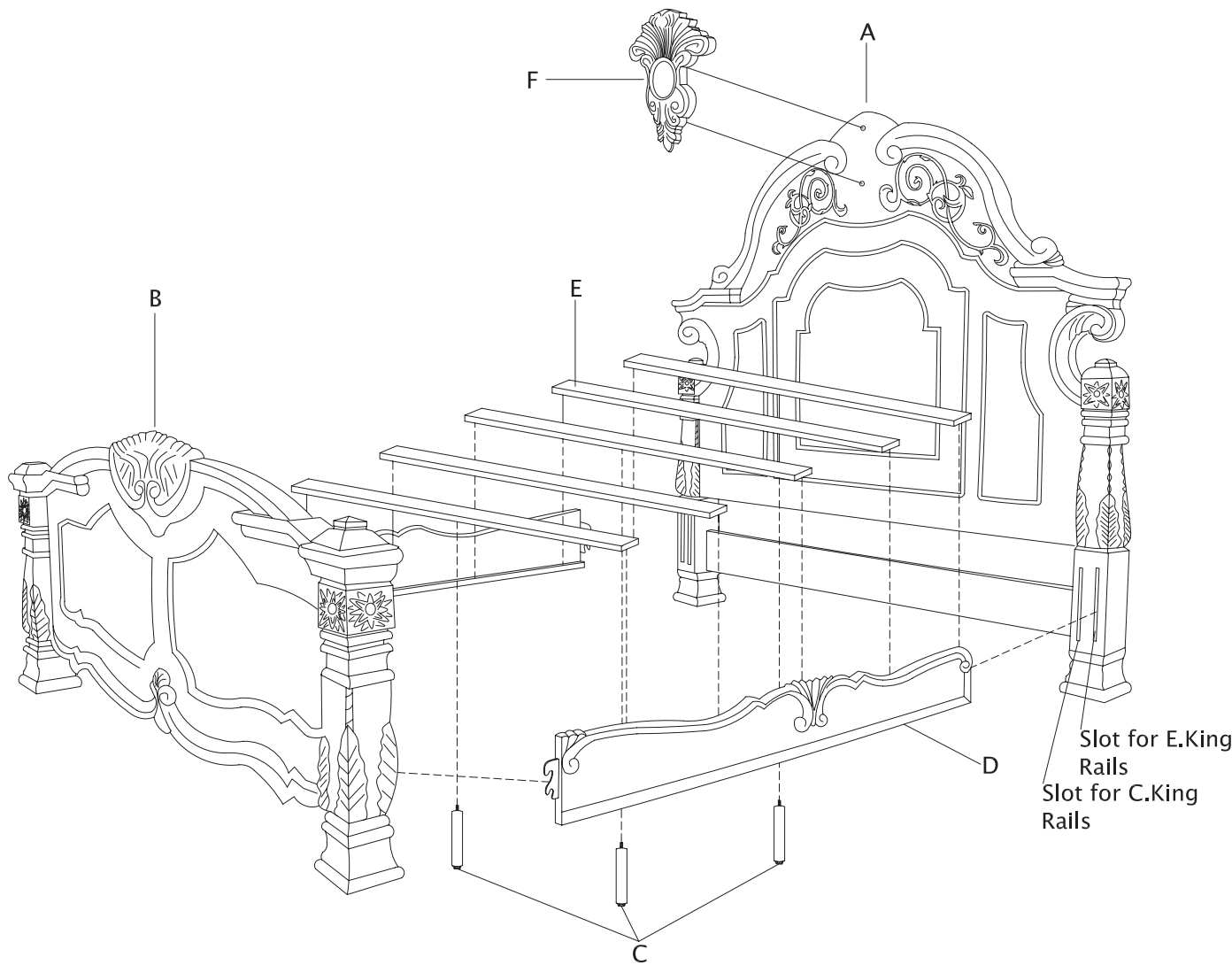
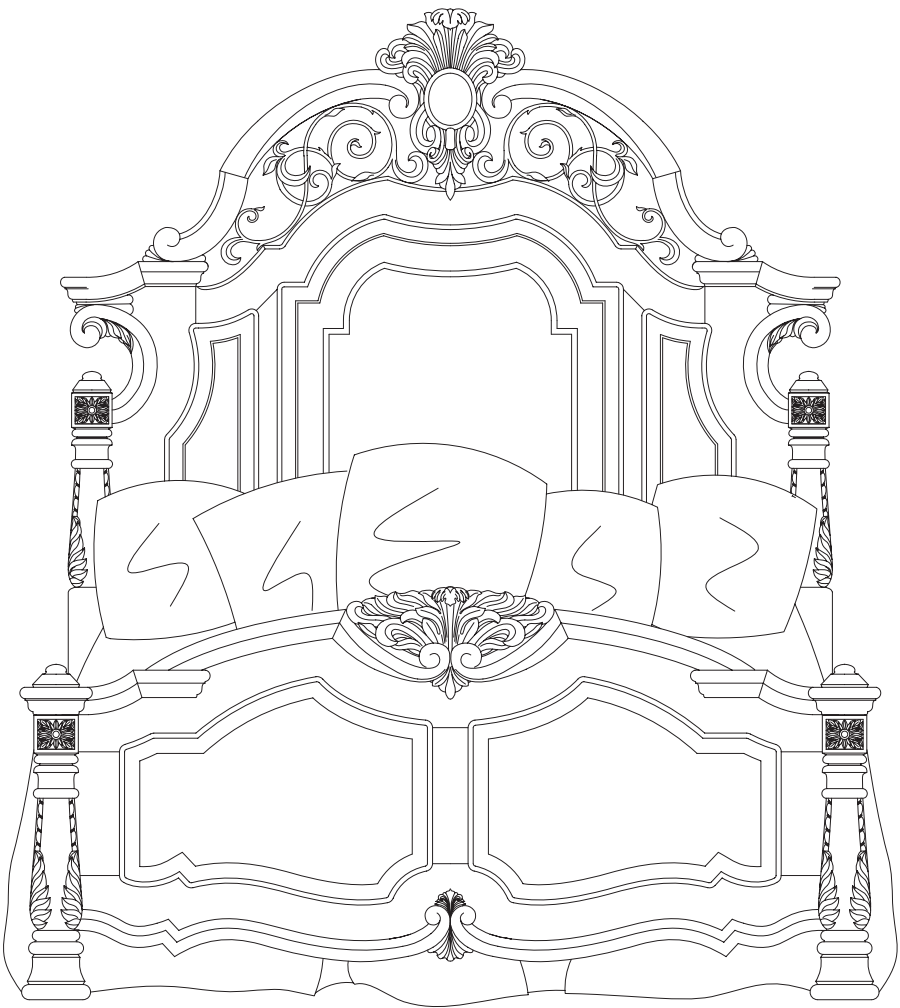


East King Bed Assembly Instructions
70014, 70024, 70037 Windsor Court



East King Bed Parts			
A	East King Headboard	70014-54	1
B	East King Footboard	70024-54	1
C	Support for Slats w/Leveler		3
D	Rail Only	70037-54	2
E	Bed Slats Only(5 pcs set)		5
F	Crown		1

NOTE: Inspect all packing material for small parts, which may have come loose during shipment. Identify and compare all parts against the parts list.



Congratulations on your purchase.

Rest assured only the finest materials, skilled artisans and modern engineering were used to carefully construct this exquisite piece.

Step 1

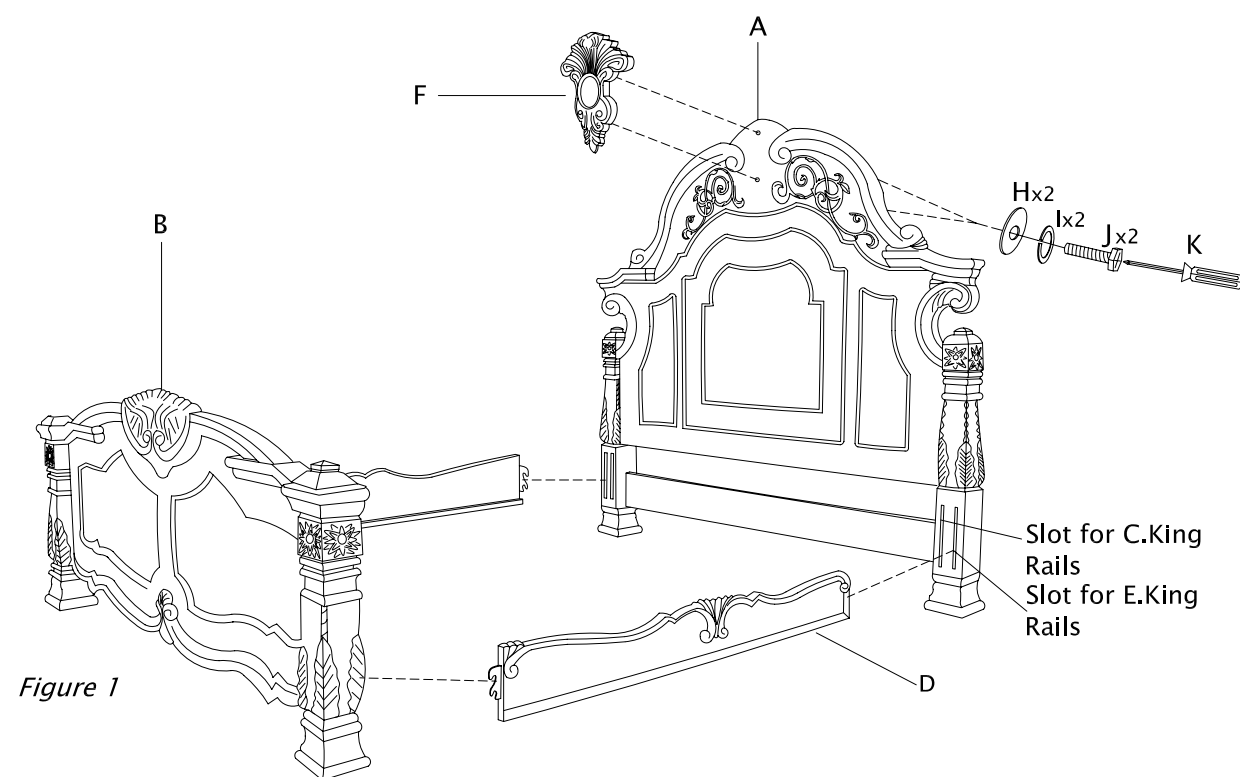


Figure 1

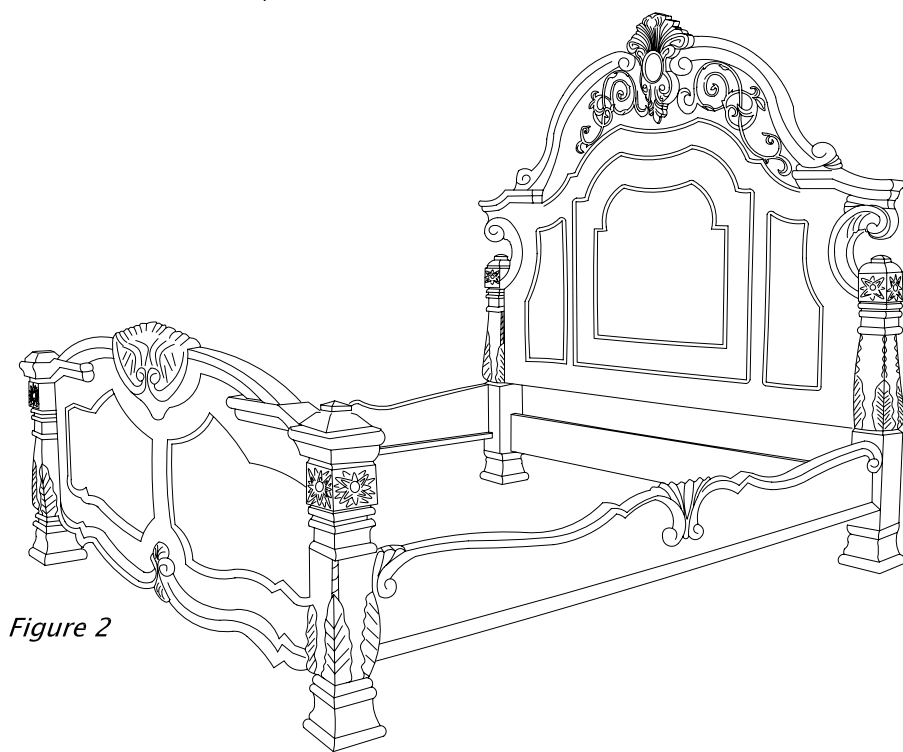


Figure 2

Instructions:
Figure 1

1. Secure F(Crown) onto A(Headboard) by inserting J (Screw Bolt) + I (Spring Washer) + H (Flat Washer) through holes and tighten with K (Screw Driver)
2. Slip D (Rail Only) hooks into B (Footboard) slot and press down firmly
3. Repeat #2 for the other D (Rail Only)

Figure 2

1. Assembled bed frame

Step 2

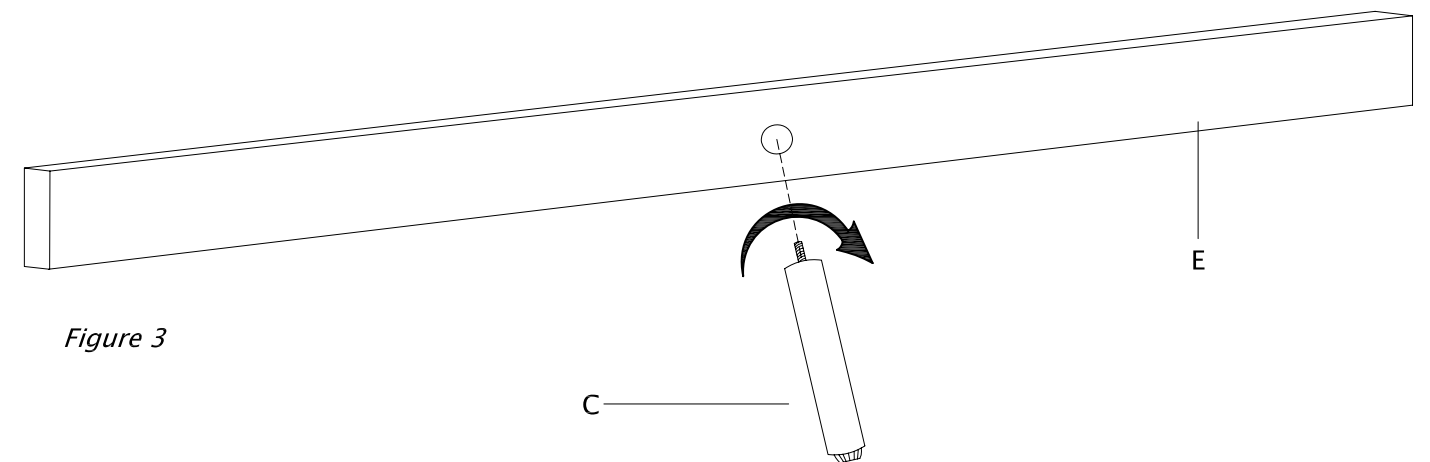


Figure 3

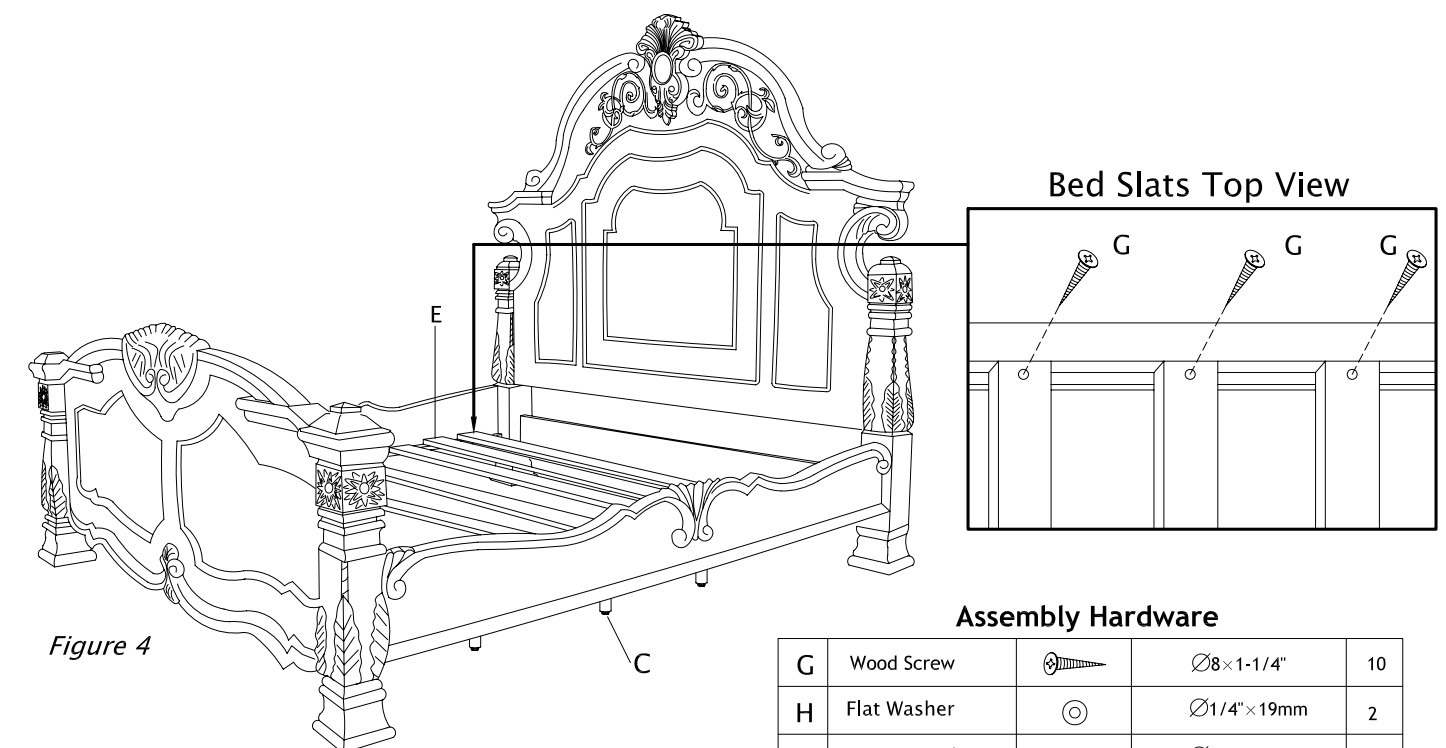


Figure 4

Instructions:

Figure 3

1. Hand screw tightly each C (Support for Slats w/Leveler) onto the bottom of a E (Bed Slats Only)
2. Repeat # 1 for each C (support for Slats w/Leveler)
3. Adjust leveler to desired height

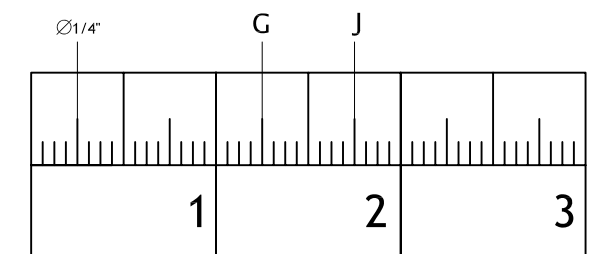
Figure 4

1. Place a E (Bed Slats Only) + C (Support for Slats w/Leveler) across the bed so it leans on the inside edge of the right and left D (Rails Only)
2. Next place a E (Bed Slats Only) across the bed so it leans on the inside edge of the right and left D (Rails Only)
3. Repeat #1 and #2 until all bed slats are installed
4. Secure each side of E (Bed Slats Only) by screwing one G (Wood Screw) into each E (Bed Slats Only) and D (Rail Only)

Assembly Hardware

G	Wood Screw		Ø8×1-1/4"	10
H	Flat Washer		Ø1/4"×19mm	2
I	Spring Washer		Ø1/4"×11mm	2
J	Bolt		Ø1/4"×1-3/4"	2
K	Screw Driver			1

Ø = diameter



Small Parts Ruler