



Russell Hobbs

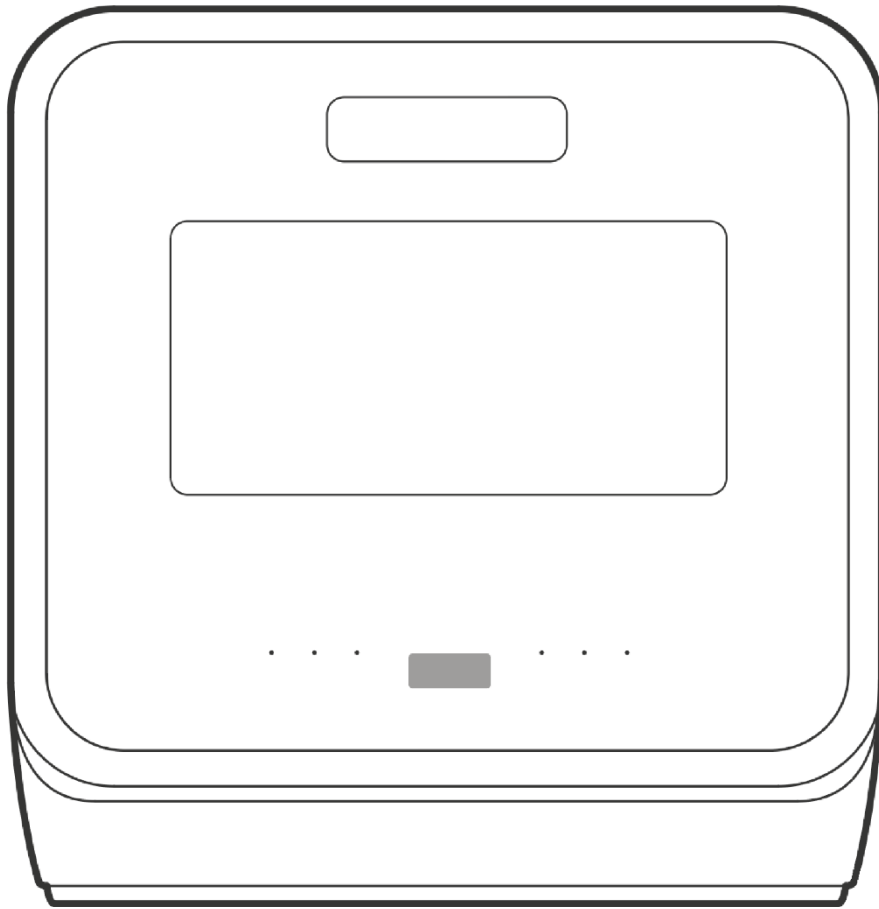
A BRITISH ICON SINCE 1952

DISHWASHER

RH2TTDW101

Operating Manual

TABLE TOP DISHWASHER



CLEAN

Clean the filters and the inside of the appliance every cycle

1
CYCLE

**REGISTER
YOUR
PRODUCT
TODAY**

GUARANTEE

At Russell Hobbs, we take all our customer feedback seriously.

Feel free to contact our Product Care Team, on **0345 208 8750** who will be more than happy to assist you.

This product is guaranteed for 12 months from the date of the original purchase. If any defect arises due to faulty materials or workmanship, the faulty product must be returned to the place of purchase.

Refund or replacement is at the discretion of the retailer.

The following conditions apply:

- The product must be returned to the retailer with the original proof of purchase.
- The product must be installed and used in accordance with the instructions contained in this instruction guide and any other instructions for use which are supplied.
- It must be used for domestic purposes only and for its intended use.
- This guarantee does not cover wear and tear, damage, misuse or consumable parts.
- This does not affect your statutory rights.

RUSSELL HOBBS CONTACT DETAILS

Website: mda.russellhobbs.com

Telephone: 0345 208 8750

Address: Product Care Customer Service, Green Bank Business Park, Hindley Green, Wigan, WN2 4AY

Note your serial number below for future reference.



Image for illustration purposes only

REGISTER ONLINE

Visit our website to register your full parts and labour guarantee online.

mda.russellhobbs.com

REGISTER BY PHONE

Call our friendly Product Care team.

0345 208 8750

CONTENTS

Page	Section
2	Guarantee
4	Helpful Information
5	Saving Water & Energy
6	Important Safety Instructions
8	Electrical Safety Instructions
9	Water Safety Instructions
10	Product Overview
11	Control Panel
12	Installation Guidance
15	First Time Use
16	Salt & Water Hardness
17	Loading the Appliance
19	Detergent
20	Programs
21	Usage Instructions
22	Cleaning Instructions
23	Error Codes
24	Problem Solving
26	Technical Specification

HELPFUL INFORMATION

- The ECO programme is suitable to clean normally soiled tableware, it is the most efficient programme in terms of its combined energy and water consumption, and that it is used to assess compliance with the EU ecodesign legislation
- Loading the dishwasher up to the capacity indicated by the manufacturer (2 Place Settings) will contribute to energy and water savings and information on correct loading of tableware and main consequences of incorrect loading will result in lower efficiency
- Pre-rinsing of tableware items leads to increased water and energy consumption and is not recommended
- Washing tableware in a household dishwasher usually consumes less energy and water in the use phase than hand dishwashing when the household dishwasher is used according to the manufacturer's instructions

SAVING WATER & ENERGY

- Only start a wash cycle when the dishwasher is full.
- While waiting for the dishwasher to be filled, prevent unpleasant odours with the Rapid Wash.
- Select a wash cycle that is suited to the type of dishes/crockery and to the soil level of the dishes/crockery using (see the washing program section): - for dishes with a normal soil level, use the Eco wash cycle, which guarantees low energy and water consumption levels.
- If your electricity supply contract gives details of electricity saving time bands, run wash cycles during the periods when a lower tariff is applied.
- use the Time Delay start function to help you organise the wash cycles accordingly.
- We strongly recommend that you use detergents that do not contain phosphates or chlorine, as these products are harmful to the environment. We recommend Phosphate-free and chlorine-free detergents containing enzymes.
- Enzymes provide a particularly effective action at temperatures around 50°C, and as a result detergents containing enzymes can be used in conjunction with low-temperature wash cycles in order to achieve the same results as a normal 65°C wash cycle.
- To avoid wasting detergent, use the product in appropriate quantities based on the manufacturer's recommendations, the hardness of the water and the soil level and quantity of the crockery. Even if they are biodegradable, detergents contain substances that may alter the balance of nature.
- Recycling & Disposal Information: As part of our continued commitment to helping the environment, we reserve the right to use quality recycled components to keep down customer costs and minimise material wastage.
- Please dispose of packaging and old appliances carefully.

IMPORTANT SAFETY INSTRUCTIONS

- It is hazardous for anyone other than a competent person to carry out any service or repair operation that involves the removal of a cover which gives protection against exposure to electrical parts.
- If the supply cord is damaged, it must be replaced by the manufacturer, its service agent or similarly qualified persons in order to avoid a hazard. DO NOT use with damaged cord or plug.
- **DO NOT** use with an extension cable.
- This product is intended for household use only. DO NOT use outdoors.
- This appliance can be used by children aged from 8 years and above and persons with reduced physical, sensory or mental capabilities or lack of experience and knowledge if they have been given supervision or instruction concerning use of the appliance in a safe way and understand the hazards involved. Children should not play with the appliance. Cleaning and user maintenance should not be made by children without supervision.
- **DO NOT** install on carpet or any surface that would prevent adequate ventilation of the appliance.
- **ALWAYS** turn off the mains supply tap and drain the appliance before moving, or cleaning and maintaining the appliance.
- **DO NOT** operate the appliance unless all panels are in place.
- **WARNING** steam may escape when the door is opened.

IMPORTANT SAFETY INSTRUCTIONS

- Use only parts and accessories supplied with the appliance, or sourced directly from the manufacturer. The use of accessory attachments not recommended by the manufacturer may cause fire, electric shock or injury.
- Keep the appliance and plug away from water.
- **DO NOT** use appliance if it has been dropped, damaged, left outdoors or dropped into water. Do not operate this appliance for anything other than its intended use.
- If unit is wet, do not plug unit into wall socket or turn unit on. Do not immerse in water or other liquids for cleaning.
- **DO NOT** handle the appliance with wet hands.
- **DO NOT** pull by the cord, close door on cord, pull cord around sharp corners or edges, or expose cord to heated surfaces.
- Ensure that sharp points and blades are pointed down.
- Ensure there is no risk of damage to door seals.
- Only use the appliance when fully assembled.
- Never place your fingers or other objects into any part of the appliance.
- Be aware that loose clothing or hair may become trapped if improperly used.
- Do not cover the body or the top of the appliance
- Fix down the accessories in the appliance during transportation to prevent damage to them.

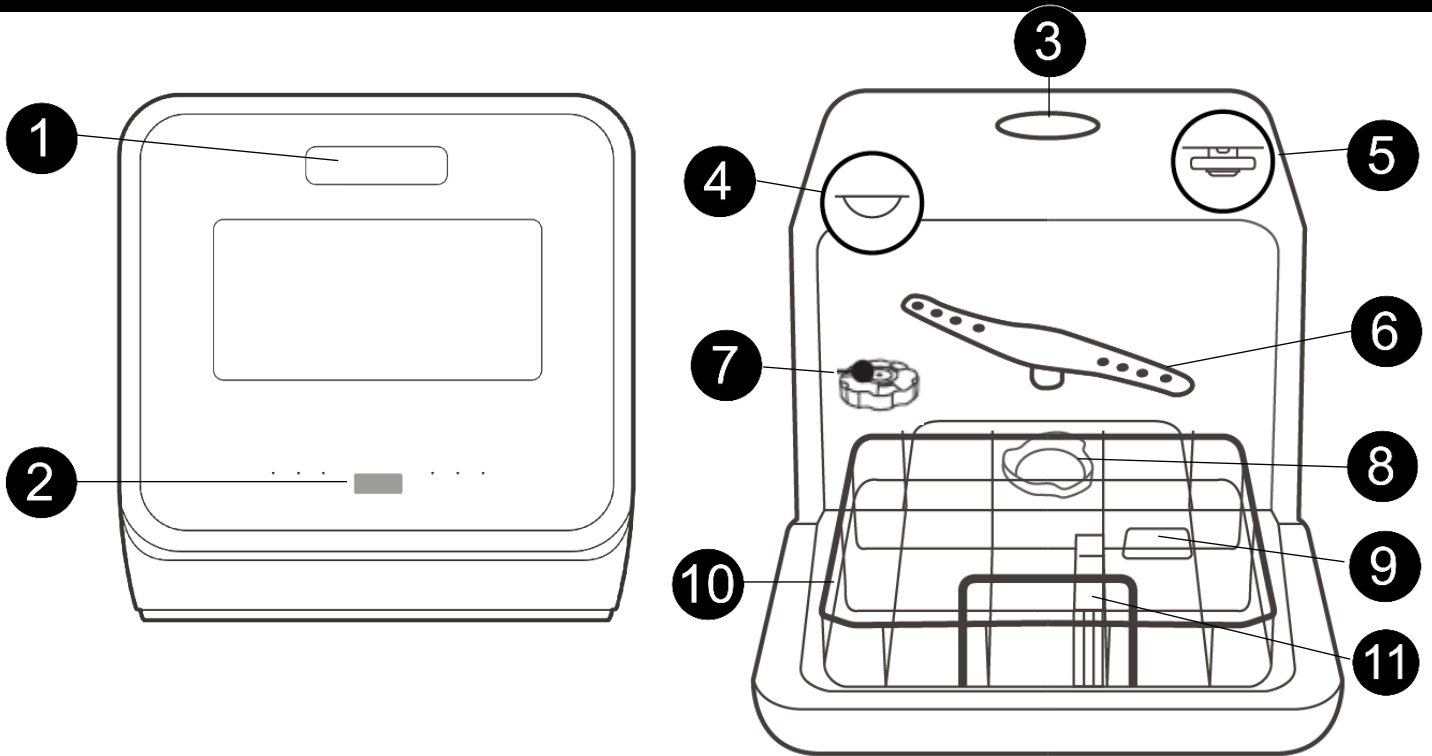
ELECTRICAL SAFETY INSTRUCTIONS

- This appliance must be plugged into an earthed socket.
- Before switching on, ensure the voltage of your electricity supply is the same as that indicated on the rating plate. This product is designed to operate on AC220–240V; 50Hz. Connection to any other power source may damage the unit.
- This product may be fitted with a non-rewireable plug. If it is necessary to change the fuse in the plug, the fuse cover must be refitted. If the fuse cover becomes lost or damaged, the plug must not be used until a suitable replacement is obtained.
- Changing the plug should only be carried out by a qualified electrician. The plug removed must be disposed of safely, as insertion into a 13 Amp socket is likely to cause an electrical hazard.

WATER SAFETY INSTRUCTIONS

- The dishwasher should not be placed on top of the water hoses or the electricity supply cable.
- If the inlet hose is not long enough, contact a specialist store or an authorised technician
- The hose should not be bent or compressed.
- The appliance must be connected to the water supply network using new hoses. Do not use old hoses.
- Ensure that the new hose supplied is connected and the old hose is disposed of safely.
- **DO NOT** overtighten the hose connector, hand tight is sufficient.
- Ensure the fill hose is not kinked.
- Tap connections: A range of adaptors are available to suit your tap.
- **DO NOT** connect the dishwasher to a single outlet instantaneous water heater or an electric heater.
- **DO NOT** be connected to a surface water drain.
- The maximum permissible inlet water pressure is 1Mpa.
- The minimum permissible inlet water pressure is 0.04Mpa.
- Do not abuse, sit on, or stand on the door or dish rack of the dishwasher.
- Do not obstruct any ventilation openings.

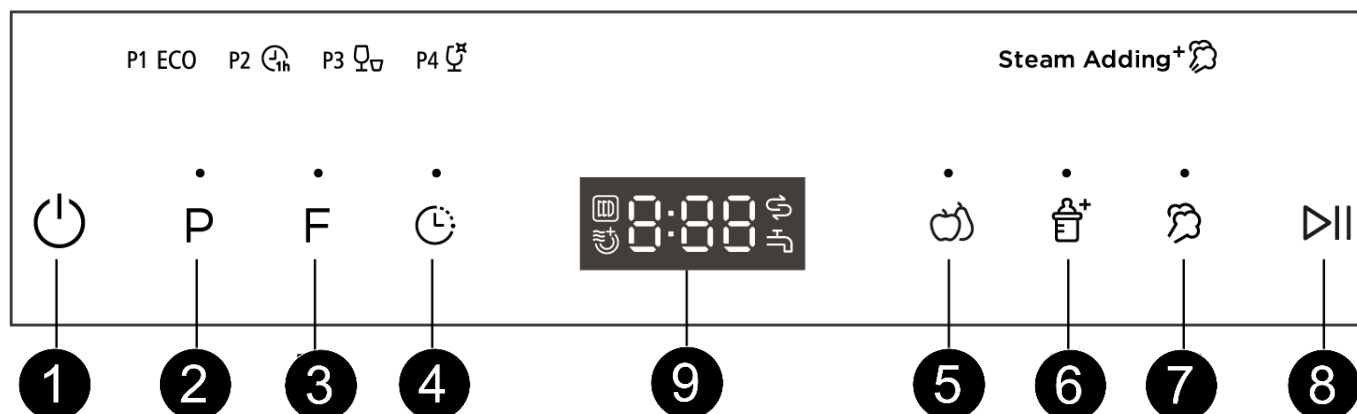
PRODUCT OVERVIEW



1. Door Handle
2. Control Panel
3. Water Fill Tank
4. Internal LED Light
5. Upper Spray Arm
6. Lower Spray Arm

7. Salt Container
8. Filter
9. Detergent Location
10. Basket
11. Cutlery Tray

CONTROL PANEL



- | | |
|-------------------|----------------|
| 1. On/Off | 4. Delay 1-24 |
| 2. Program Select | 5. Fruit Wash |
| a. P1 Eco | 6. Baby Care |
| b. P2 1 Hour | 7. Steam+ |
| c. P3 Rapid Wash | 8. Start/Pause |
| d. P4 Glass | 9. Display |
| 3. Function | |
| a. Storage | |
| b. Extra Dry | |

WARNING – Residual water may be present after a cycle. This must be drained before moving.

To force a drain cycle, in standby mode press and hold the 'Baby Care' [6] and the 'Steam+' [7] buttons for 3 seconds.

INSTALLATION GUIDANCE

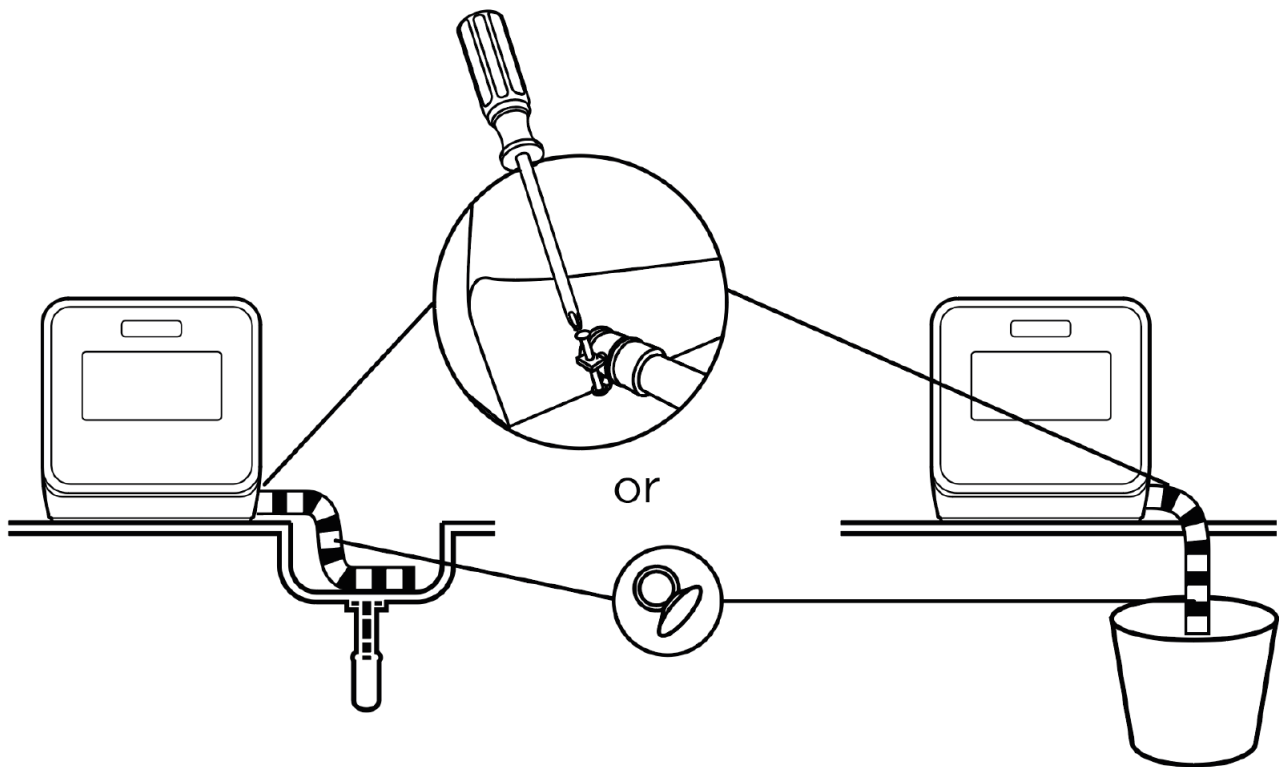
CAUTION This is heavy. Ensure care is used when moving the appliance.

Water Intake: This appliance can either be plumbed in using the supplied water connection, or filled with water using the internal water tank.

Waste Water: This appliance can be drained directly into a sink or waste water outlet, or into a bucket or other container of a minimum capacity of 10 Litres.

- Place your appliance in an area that is not exposed to direct sunlight.
- Do not place anything on top of your appliance and install the unit in a suitable place so that there is at least 5cm clearance around the appliance.
- The rear of the appliance should be at least 6cm away from the back wall.
- The appliance must be used in the vertical position and on a flat surface.
- **DO NOT** place your appliance on a carpeted surface as this will prevent adequate ventilation.
- This appliance should only be placed on a flat, firm surface.
- The appliance should be positioned so that the plug is easily accessible.

INSTALLATION – WASTE PIPE

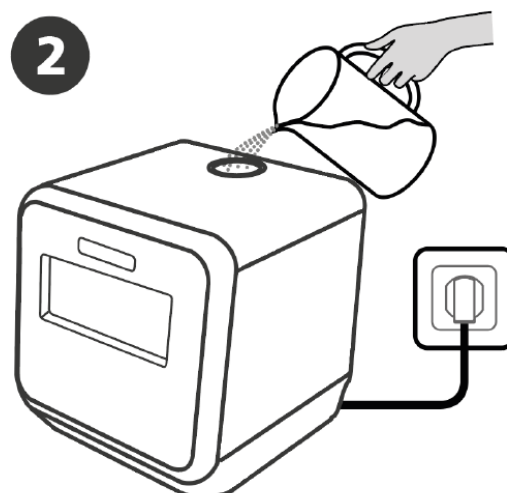
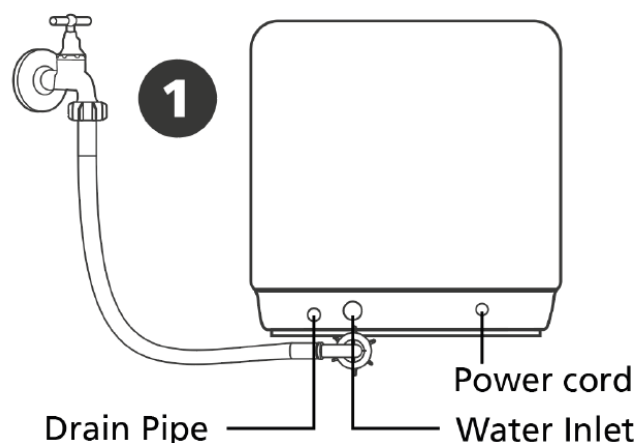


The waste water drainage pipe may already be attached to the machine. If it is not, or has come loose, it can be refitted using a screwdriver and tightening the clamp on the pipe.

Run the drainage pipe into a sink, bucket or waste water discharge pipe, ensuring that it is always lower than where it comes out of the appliance.

You may use suction cups to ensure there is no movement in the drainage pipe.


INSTALLATION – WATER INLET



Your appliance can be filled either through a plumbed water intake, or manually filled.

Plumbed Water

The supplied water inlet pipe is attached to the inlet at the rear of the appliance by removing the White cap and screwing on the inlet pipe. The other side of the inlet pipe is connected to a $\frac{3}{4}$ inch threaded tap. Adapters (not supplied) can be used to fit to alternative water sources.

IMPORTANT – If the  symbol is displayed, there is not enough water pressure to operate.

Manually Filled

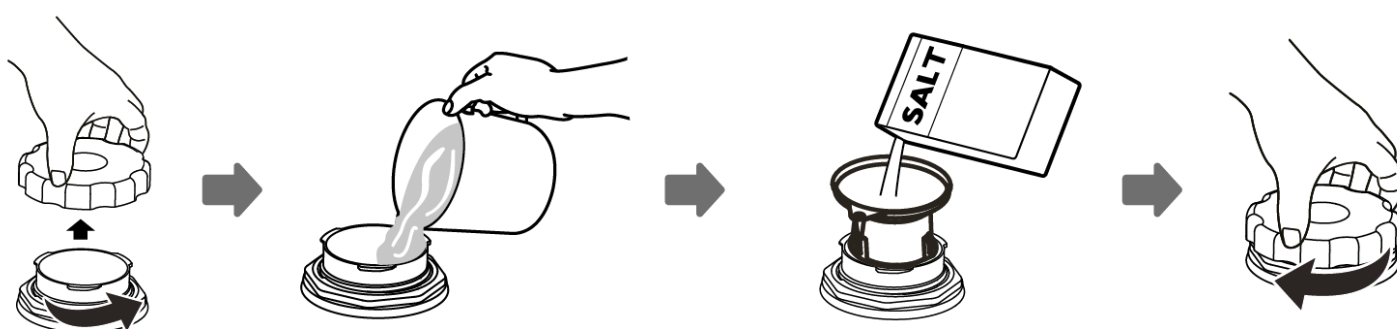
Ensuring the inlet cap is in place, unscrew the cap on top of the appliance and fill with water until the appliance beeps.

IMPORTANT – Your appliance must be switched on when manually filling with water.

FIRST TIME USE

Before first use, the appliance must be loaded with dishwasher salt.

- Remove the basket from the bottom of the appliance
- Unscrew the cap from the salt container
- Add 1 Litre of water to the salt container.
- Using a funnel (not supplied) add 130g of dishwasher salt to the container.
- Once filled, replace the salt container cap and the basket.



NOTE – The Salt Warning light may remain illuminated for 2-6 days even when filled.

WARNING – Do not use any salt other than dishwasher specific salt. The use of table or other salts will invalidate your guarantee.

Place a detergent tab into the machine and run an ECO cycle to remove any odours and prepare the machine for regular use.

DO NOT put any cutlery or dishes in the appliance during first use.

ADJUSTING SALT FOR WATER HARDNESS

The water hardness/salt level must be set according to the water condition in your local area. The water softener is designed to remove minerals and salts from the water, which would have a detrimental or adverse effect on the operation of the appliance. The higher the content of these minerals and salts, the harder your water is. Your local Water Authority can advise you on the hardness of the water in your area.

Setting the Hardness Level

1. Close the door and within 60 seconds after pressing the power button, press 'Program' and hold for 5 seconds.
2. Press the 'Program' button to cycle through the hardness settings, indicated as H1-H6 (default is H3).
3. After no input for 5 seconds, the selected hardness level will be set.

WATER HARDNESS		Setting on the water softener	Digital display stalls	Regeneration occurs every X programme sequence ⁴⁾
°dH ¹⁾	Mmol/l ²⁾			
0 - 5	0 - 0.94	1	H1	No regeneration
6 - 11	1.0 - 2.0	2	H2	10
12 - 17	2.1 - 3.0	3	H3 ³⁾	5
18 - 22	3.1 - 4.0	4	H4	3
23 - 34	4.1 - 6.0	5	H5	2
35 - 55	6.1 - 9.8	6	H6	1

1) German degree of measurement for the water hardness

2) millimol, international unit for water hardness

3) factory setting

4) Regeneration of water softener. The water softener (dishwasher salt) must be replenished regularly to maintain the softening function. During regeneration, an additional 0.2 litres of water is required, energy consumption is increased by 0.01kWh and the programme is extended by 4 minutes.

LOADING THE APPLIANCE

NOTE – Ensure all dishes and cutlery are dishwasher proof, or they may become damaged. Items such as wooden utensils, bone china, copper, or synthetic materials are not suitable. Always check with the manufacturer.

WARNING – Never use washing up liquid, or any other detergent not specifically designed for dishwasher use.

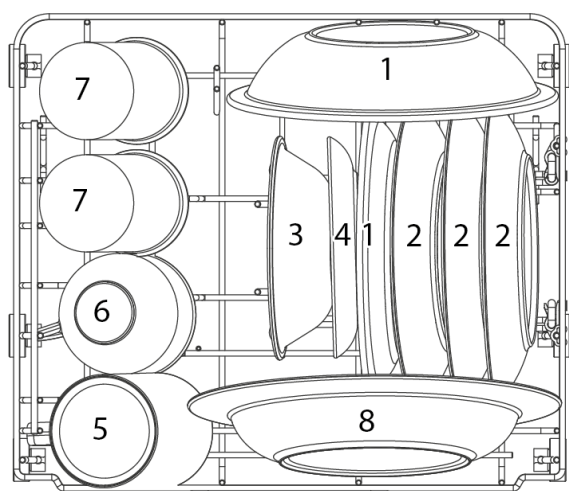
NOTE – This appliance is designed for a maximum of 2 Place Settings.

NOTE – Always scrape off residual food off plates and cutlery to maximise performance.

WARNING – Take care when loading items such as knives.

We recommend specific loading to ensure maximum performance*.

- Cutlery must be placed on the provided cutlery tray.
- Hollow items such as cups and bowls must be face down or angled.



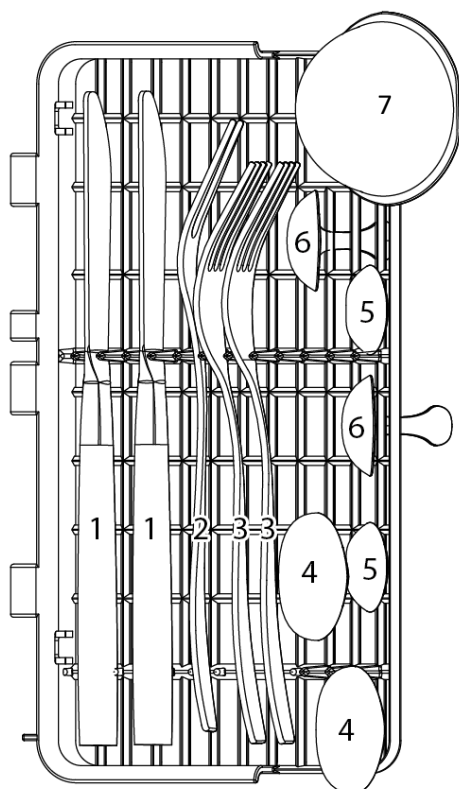
1	Large Dessert plate
2	Standard plate
3	Dessert bowl
4	Saucer
5	Mug
6	Cup
7	Glass
8	Soup bowl

*in accordance with EN60436:2020/A11:2020

LOADING THE APPLIANCE

We recommend specific loading to ensure maximum performance*.

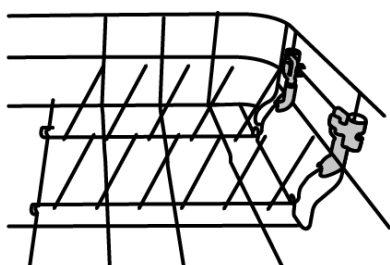
- Cutlery must be placed on the provided cutlery tray.



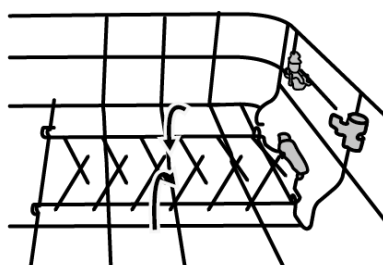
1	Knife
2	Serving fork
3	Fork
4	Soup spoon
5	Teaspoon
6	Dessert spoon
8	Ladle

The bottom basket rack can be laid flat for larger items.

raise upwards



fold backwards

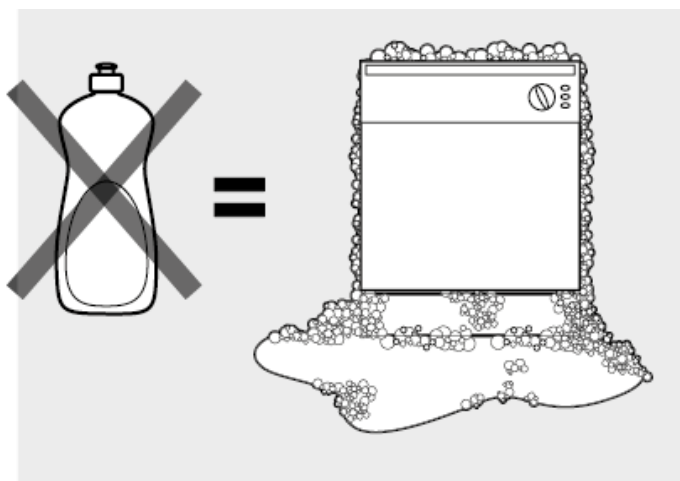
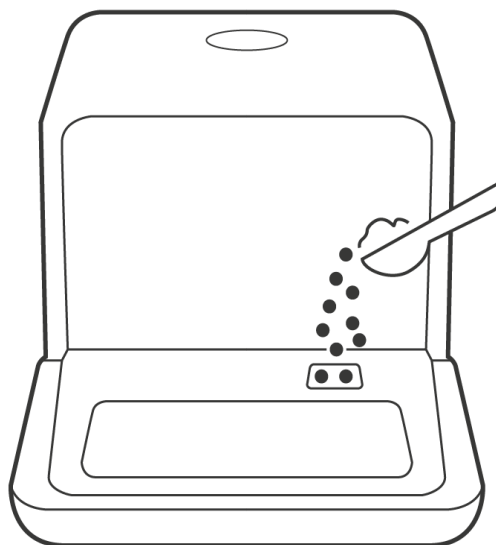


*in accordance with EN60436:2020/A11:2020

DETERGENT

Detergent should be used on every cycle. This appliance uses less detergent than a conventional dishwasher, so must be adjusted accordingly. Shorter programs will not dissolve full tablets, or more than 1 tablespoon of detergent.








Detergent should be added to the appropriate location inside the appliance.



Only use detergent designed for use in dishwashers in the appliance. Improper detergents can lead to excess foaming, flooding, and damage to the appliance and surrounding areas.

PROGRAMS

Select the most appropriate cycle by pressing the 'P' button to cycle through the programs.

Program	Information	Description	Det. Amt.	Time (min)	Energy (kWh)	Water (L)
ECO	Standard programme, Suitable for normally soiled tableware and the most efficient program in of combined energy and water consumption for normal usage	Wash (50°C) Rinse Rinse (72°C) Drying	10g	160	0.396	5
 1 Hour	For lightly soiled loads that do not need intense drying	Wash(50°C) Rinse Rinse(65°C) Drying	10g	60	0.400	5
 Rapid	Shorter wash for lightly soiled loads	Wash (50°C) Rinse Rinse (60°C)	10g	29	0.350	5
 Fruit wash (Hot)	Suitable for washing fruit surfaces with a tough skin such as apples, & grape, Not suitable for fruits with a delicate skin.	Wash (36°C) Rinse	N/A	12	0.150	5
 Fruit wash (Cold)	Suitable for fruits with a delicate surface, such as berries	Rinse	N/A	6	0.010	5
 Baby care	Suitable for washing baby bottles	Wash(69°C) Rinse Rinse(70°C) Drying	10g	115	0.500	5
 Glass	For lightly soiled loads, such as glasses, crystal and fine china	Wash(50°C) Rinse Rinse(65°C) Drying	10g	85	0.400	5
	When the wash cycle ends, the machine will add steam to sanitise.	Not used during Fruit Wash (cold)	N/A	N/A	N/A	N/A

*time, energy consumption and water consumption above not including Eco are indicative only

USAGE INSTRUCTIONS

Load the appliance in an appropriate manner as outlined in this manual, add the required detergent, and close the door.

Once the door is closed, turn the appliance on and follow the water fill instructions in this manual.

Select the desired program by pressing the 'P' button. Once the program is selected, press the 'Start/Pause' button to begin operation.

When the end of the program is reached, the appliance will beep for 8 seconds. Turn off the appliance pressing the 'On/Off' button.

NOTE – we recommend opening the door to assist in drying for 30 minutes after a cycle has finished.

CHANGING THE PROGRAM

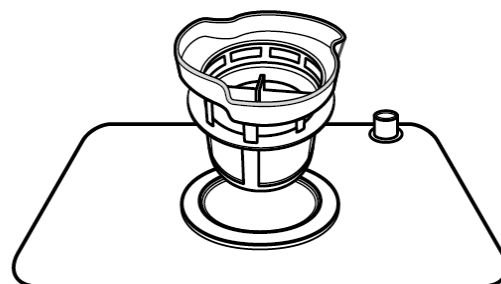
You can modify the wash program within the first few minutes of a cycle.

- Press the 'Start/Pause' button
- Hold the 'P' button for 3 seconds, and then you can select the required program.
- Once the desired program is selected, press the 'Start/Pause' button to resume.

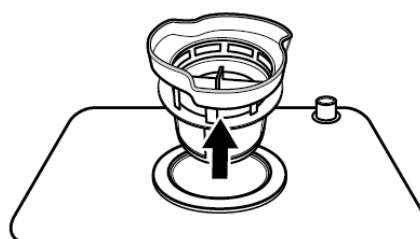
CLEANING INSTRUCTIONS

WARNING – Never operate this appliance without the filters installed.

WARNING – before cleaning or maintenance, make sure the appliance is switched off at the mains, and any residual water is drained, with the tap switched off.



Remove the filter by twisting in an anti-clockwise direction and lifting.

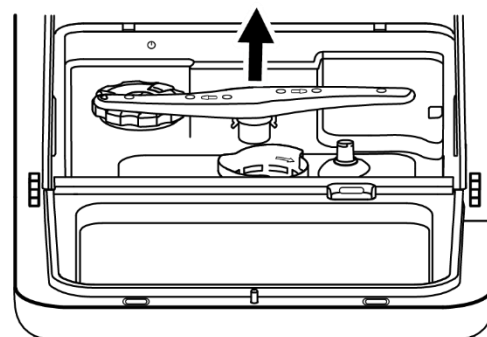


The filters should be cleaned using warm running water and a soft brush.

We recommend cleaning the filters after every cycle for optimal performance.

We recommend cleaning the inside surfaces and the door every cycle to prevent a build up of grime. Using warm water and a damp cloth, gently wipe down all surfaces to clean.

The spray arms can be removed by grasping them in the centre and pulling gently. Wash using running water, then replace ensuring they spin freely.



ERROR CODES

E1	Longer than expected inlet time	<ul style="list-style-type: none"> • Flow meter failure • Drain valve failure • Pump failure • Only a qualified technician can repair
E3	Not reaching the required temperature	<ul style="list-style-type: none"> • Heating tube anomaly • Thermostat anomaly • Only a qualified technician can repair
E4	Overflow	<ul style="list-style-type: none"> • A leak has been detected • Follow the steps highlighted in 'Problem Solving' • If not resolved, contact customer services
Ed	Communication problem	<ul style="list-style-type: none"> • Only a qualified technician can repair

PROBLEM SOLVING

Appliance does not turn on	<ul style="list-style-type: none"> • Check it is plugged in • Check the plug socket operates correctly using another appliance • Check the fuse
Water not removed from appliance at the end of the cycle	<ul style="list-style-type: none"> • Check the drain hoses are not twisted or trapped • Check the filter is not clogged • Check the waste pipe, sink or bucket is not blocked
Excess bubbles	<ul style="list-style-type: none"> • Incorrect type of detergent used • Open the door for 20-30 minutes to allow the bubbles to dissipate. • Add 1.5L of water inside the machine and run a drain cycle
White residue on the dishes/appliance	<ul style="list-style-type: none"> • Water hardness • Clean the appliance, and check the salt levels and hardness setting
Dishes not clean	<ul style="list-style-type: none"> • Dishes not loaded properly • Follow the loading guidelines in this manual
Appliance is leaking	<ul style="list-style-type: none"> • Immediately switch off at the mains and turn off the water inlet tap • Check all installation points for leaks • Remove water manually, and restart the appliance • If leak continues, switch off and contact customer services
Knocking noise during cycle	<ul style="list-style-type: none"> • Loose cutlery/dishes • Spray arm may be coming into contact with dishes • Loose spray arm, check in correct position
Cloudiness on glassware	<ul style="list-style-type: none"> • Use less detergent and run a short quick cycle to clean

If you are still experiencing difficulties with the appliance, please contact us **BEFORE** returning the appliance to the retailer it was purchased from:

Website: mda.russellhobbs.com

Telephone: 0345 208 8750

Address: Product Care Customer Service, Green Bank Business Park, Hindley Green, Wigan, WN2 4AY

TECHNICAL SPECIFICATION

Product fiche created in pursuant to Commission Regulation (EU) 2019/2022 of 1 October 2019

Supplier's name or Trade Mark:	Russell Hobbs								
Supplier's Address:	Unit 1, Green Bank Business Park, Wigan, WN2 4AY / PCT (NI) Ltd, Belfast, BT5 5AD.								
Model Identifier:	RH2TTDW101 W/B								
Product Type	Freestanding								
	Value		Value						
Standard Place Settings	2	Dimensions (cm)	<table border="1"> <tr> <td>Height</td> <td>43.5</td> </tr> <tr> <td>Width</td> <td>42</td> </tr> <tr> <td>Depth</td> <td>43.5</td> </tr> </table>	Height	43.5	Width	42	Depth	43.5
Height	43.5								
Width	42								
Depth	43.5								
Energy Efficiency Index (EEI)	62.9	Energy Efficiency Rating	G						
Annual energy consumption (kWh) [Eco]	0.396								
<i>Energy consumption "X" kWh per year, based on consumption of the low-power modes. Actual energy consumption per cycle will depend on how the appliance is used.</i>									
Programme duration of Standard mode (h:min)	Full Load	02:40	Water Consumption (L) [Eco]						
			5						
Power Consumption in Off mode (W)	N/A		Power Consumption in Standby mode (W)						
			N/A						
Airborne acoustical noise emissions (dB)	58		Airborne acoustical noise emission class						
			D						
			Standby Duration:						
			N/A						
Minimum duration of the guarantee offered by the supplier:		1							
Weblink to the manufacturer's website, where the information in point 4(a) Annex of Commission Regulation (EU) 2019/2019 (1) (b) is found:		mda.russellhobbs.com							

IMPORTANT!

CLEAN

Wash the filters and inside with warm water every cycle.

1

CYCLE



This product is guaranteed for 12 months from the date of the original purchase. If any defect arises due to faulty materials or workmanship, the faulty product must be returned to the place of purchase.

REGISTER ONLINE

Visit our website to register your full parts and labour guarantee online.

mda.russellhobbs.com

REGISTER BY PHONE

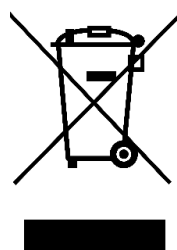
Call our friendly Product Care team.

0345 208 8750



Made by Product Care Trading Limited under license from Spectrum Brands (UK) Limited. Product Care Trading Limited, Wigan, WN2 4AY/ PCT (NI) Ltd, Belfast, BT5 5AD. Russell Hobbs is the registered trademark of Spectrum Brands (UK) Ltd.

Russell Hobbs Support: call 0345 208 8750 or visit mda.russellhobbs.com



The 'wheellie bin' symbol is known as the 'Crossed-out wheellie bin Symbol'. When this symbol is marked on a product/batteries, it means that the product/batteries should not be disposed of with your general household waste. Only discard electrical/electronic/battery items in separate collection schemes, which cater for the recovery and recycling of materials contained within. Your co-operation is vital to ensure the success of these schemes and for the protection of the environment. For your nearest disposal facility, visit www.recycle-more.co.uk or ask in store for details.

SEDEX – Connecting businesses and their global suppliers to share ethical data and enabling improvement in ethical performance. Visit www.sedex.org.uk for further information.

We reserve the right, due to possible changes to design, to alter the instruction manual without prior notice.