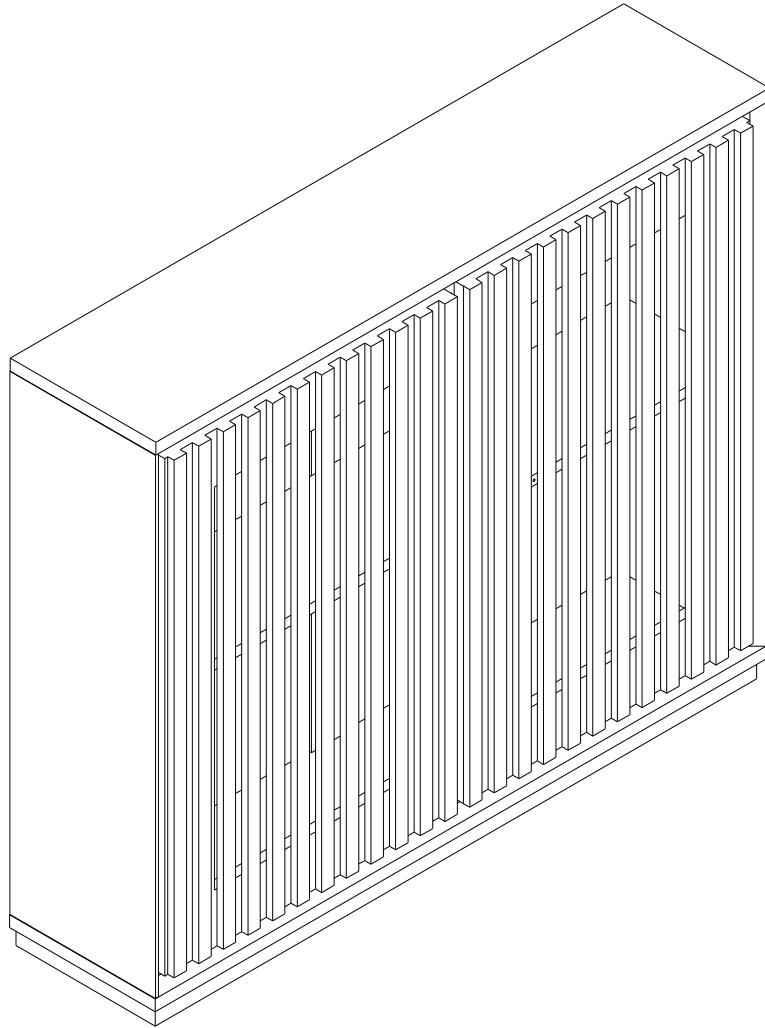
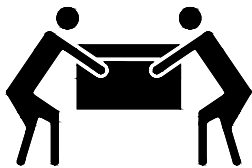


ASSEMBLY INSTRUCTIONS

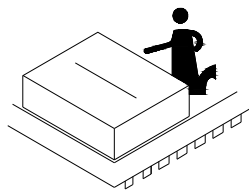


Notice:

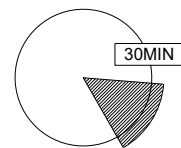
1. Follow the installation instructions. Please confirm all accessories are preset before installation.
2. Do not fully tighten the screws during initial assembly. Fully tighten screws only once all pieces which are correctly assembled.
3. If you encounter any problems during installation, please contact our customer service.
4. Please unbox the item from the side with an open-label and put a carpet on the floor to avoid scratching it.



Recommended installers:2



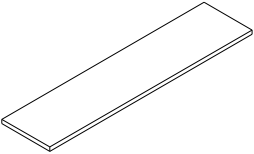
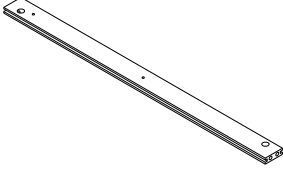
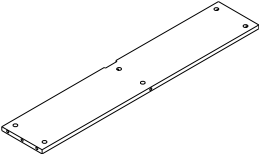
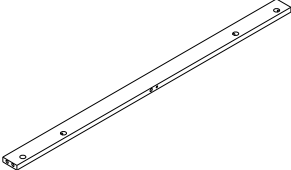
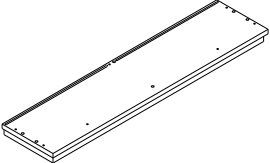
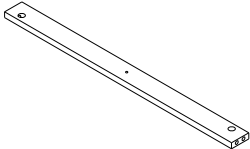
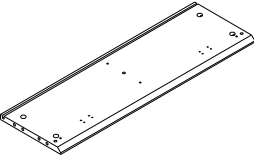
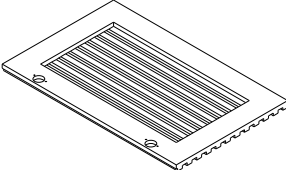
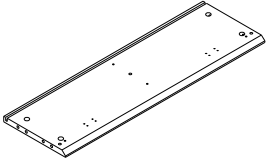
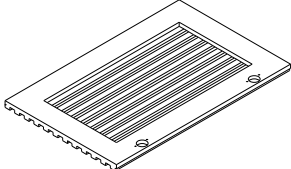
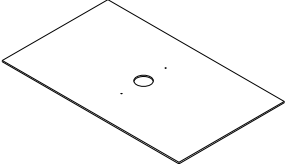
Put a carpet on the floor
before unpacking



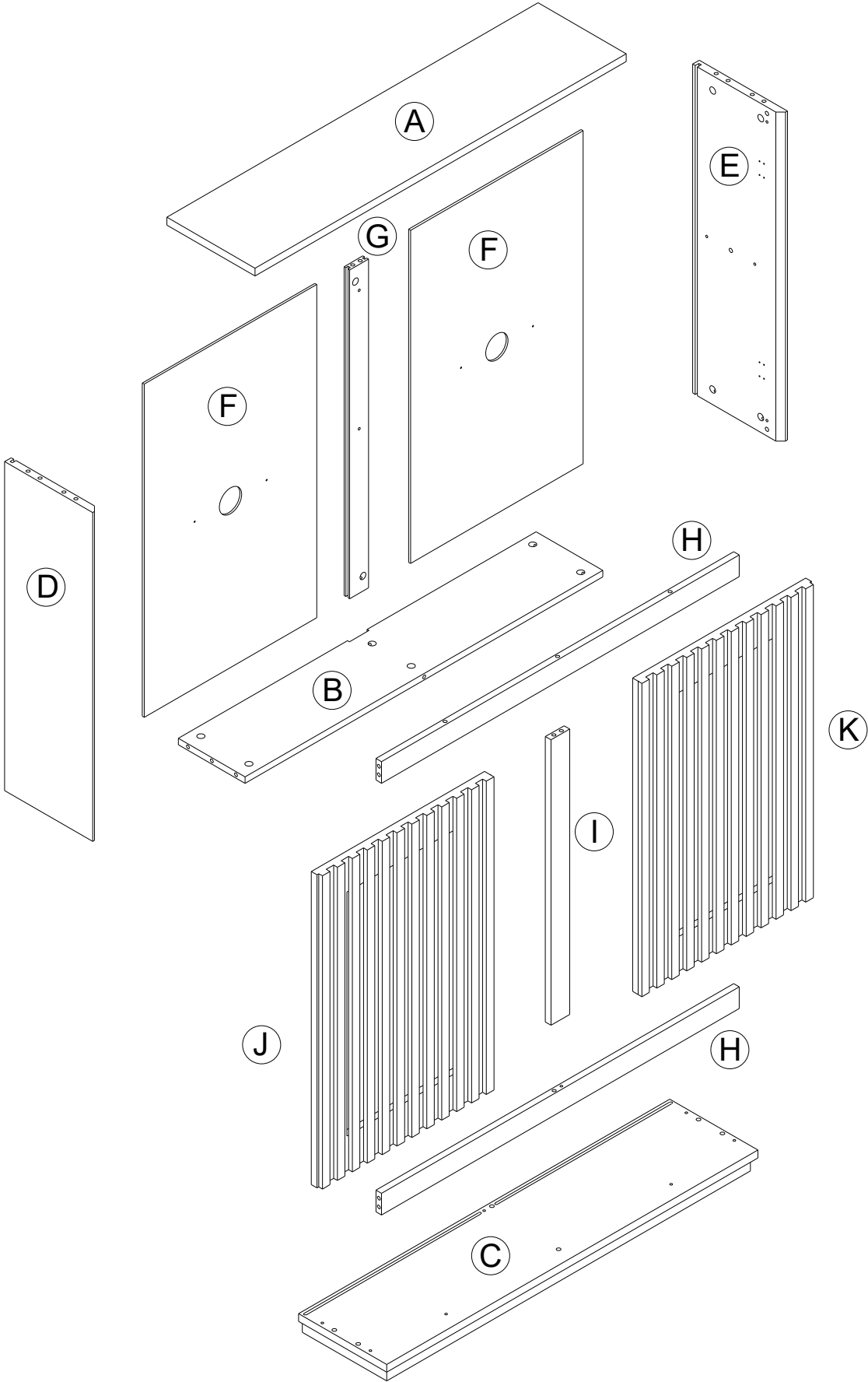
Estimate installation time:
30minutes

ASSEMBLY INSTRUCTIONS

PART LIST

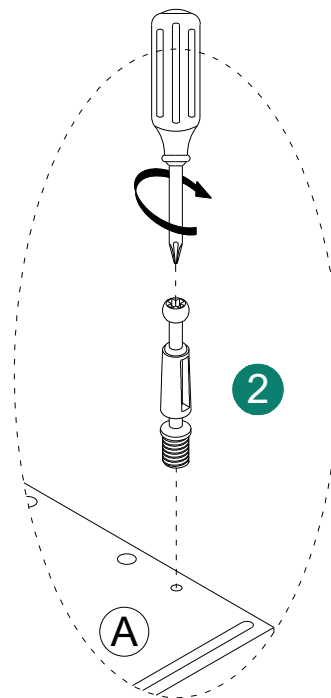
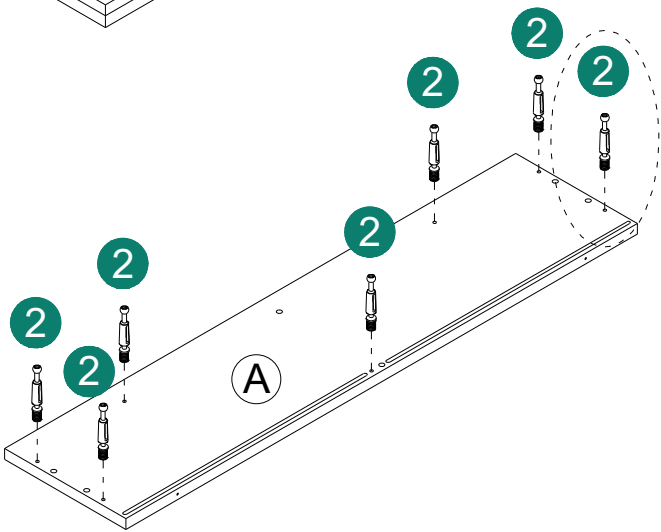
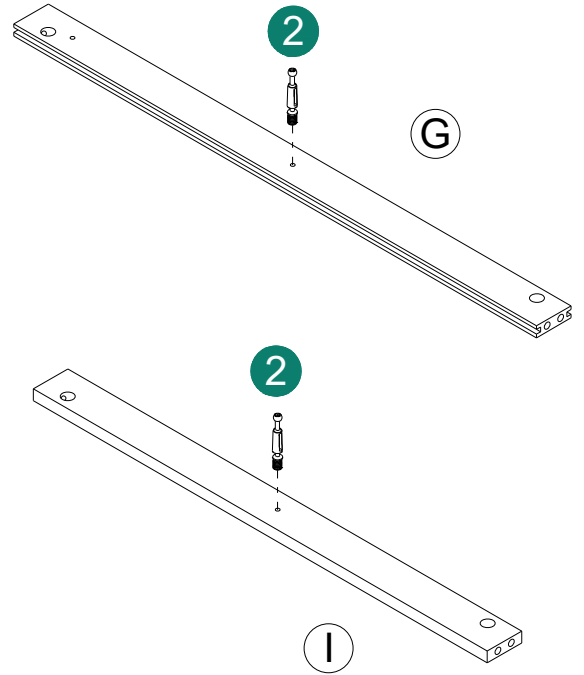
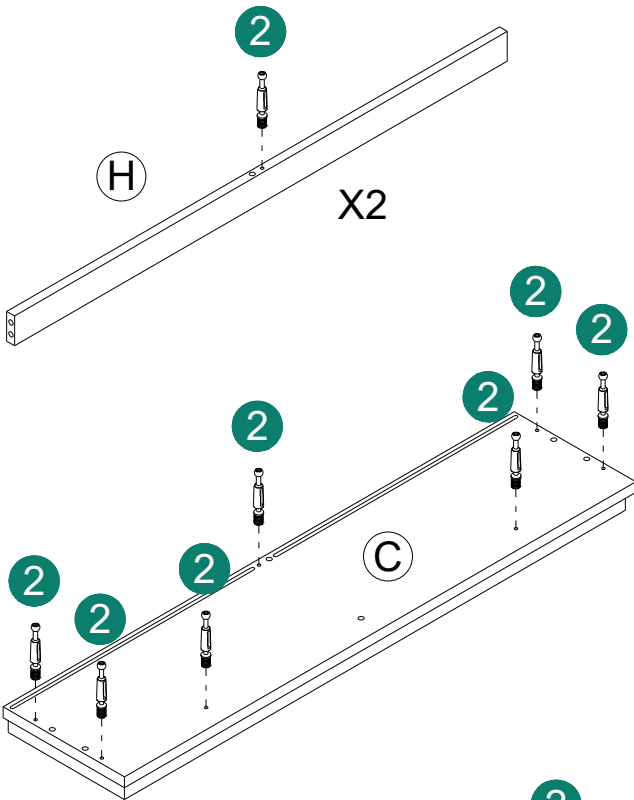
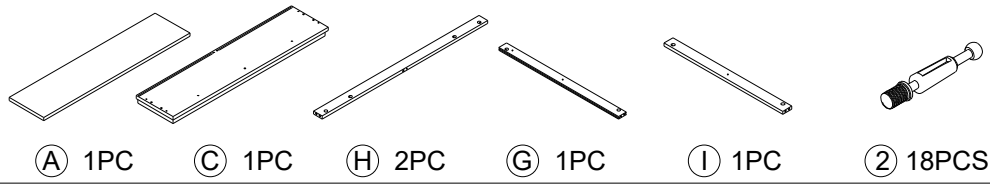
Item no.	Reference Image	Qty	Item no.	Reference Image	Qty
A		X1	G		X1
B		X1	H		X2
C		X1	I		X1
D		X1	J		X1
E		X1	K		X1
F		X2			

ASSEMBLY INSTRUCTIONS



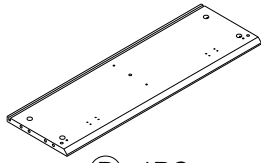
ASSEMBLY INSTRUCTIONS

1

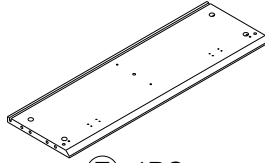


ASSEMBLY INSTRUCTIONS

2



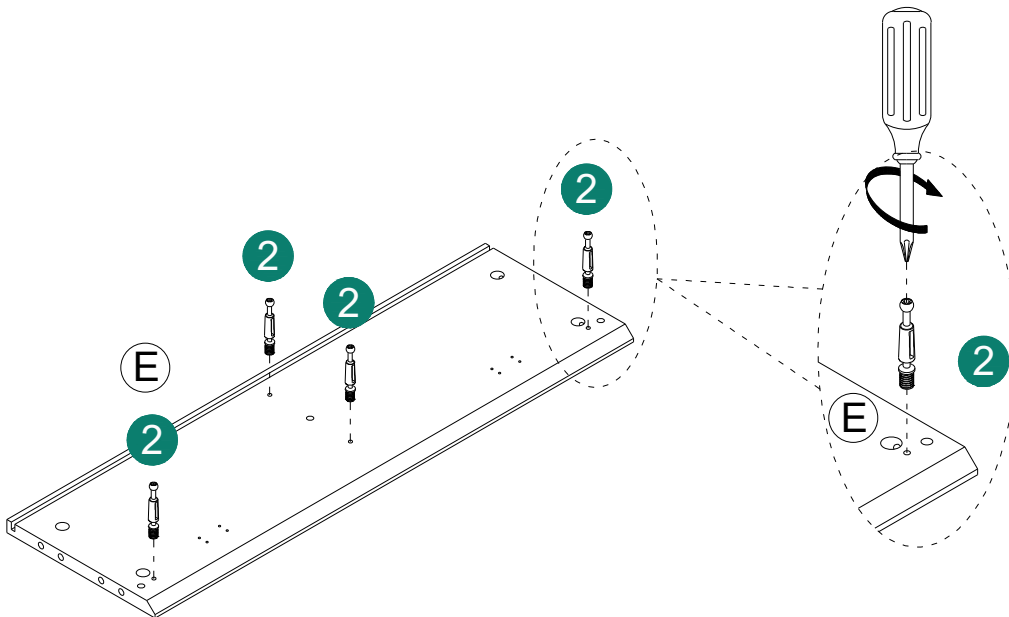
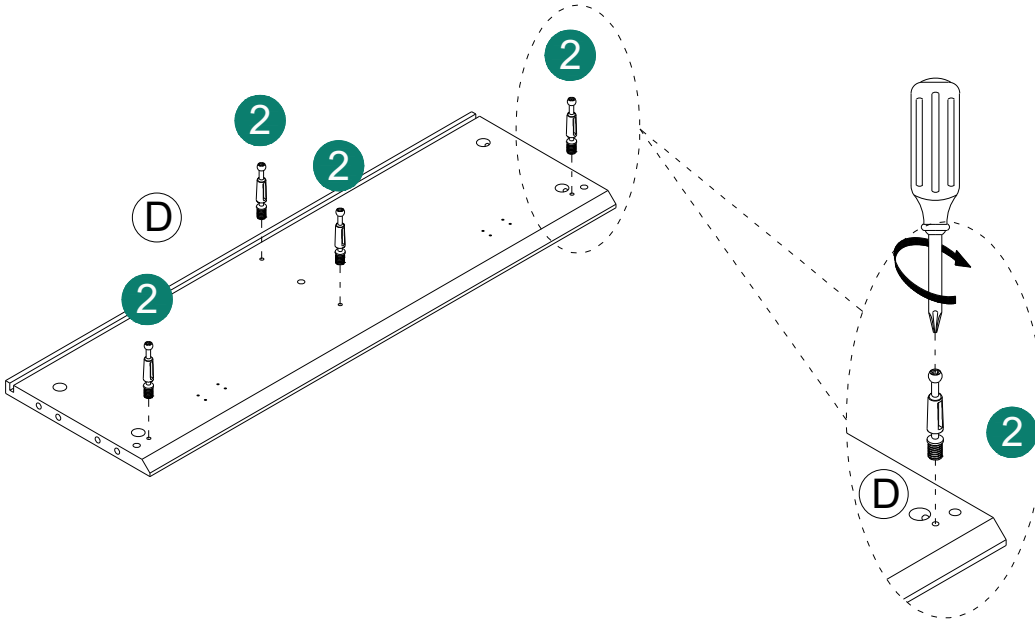
D 1PC



E 1PC

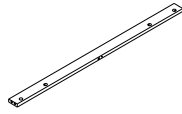


2 8PCS



ASSEMBLY INSTRUCTIONS

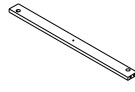
3



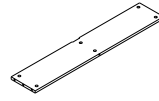
(H) 2PC



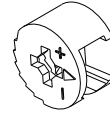
(G) 1PC



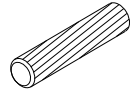
(I) 1PC



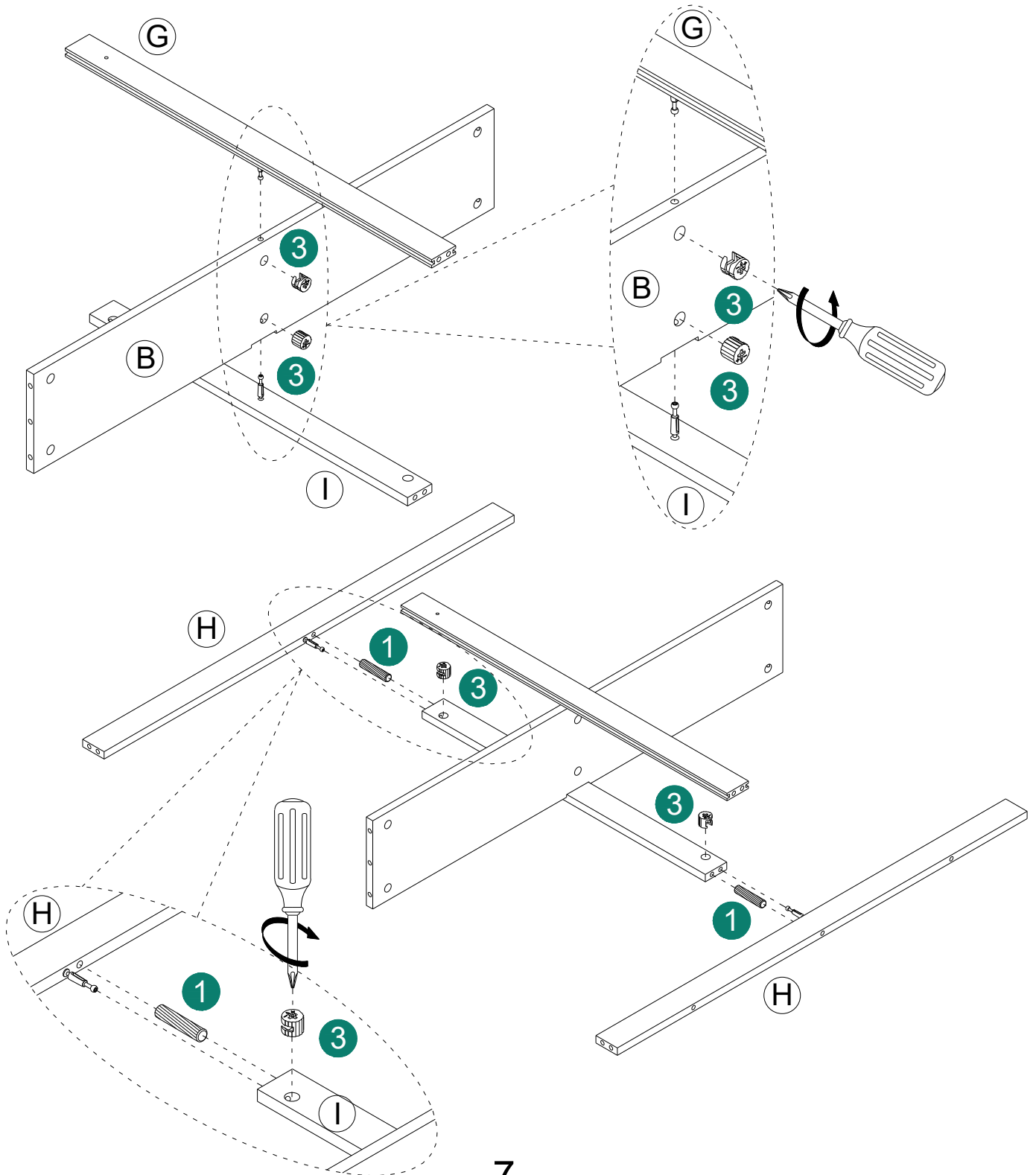
(B) 1PC



(3) 4PCS

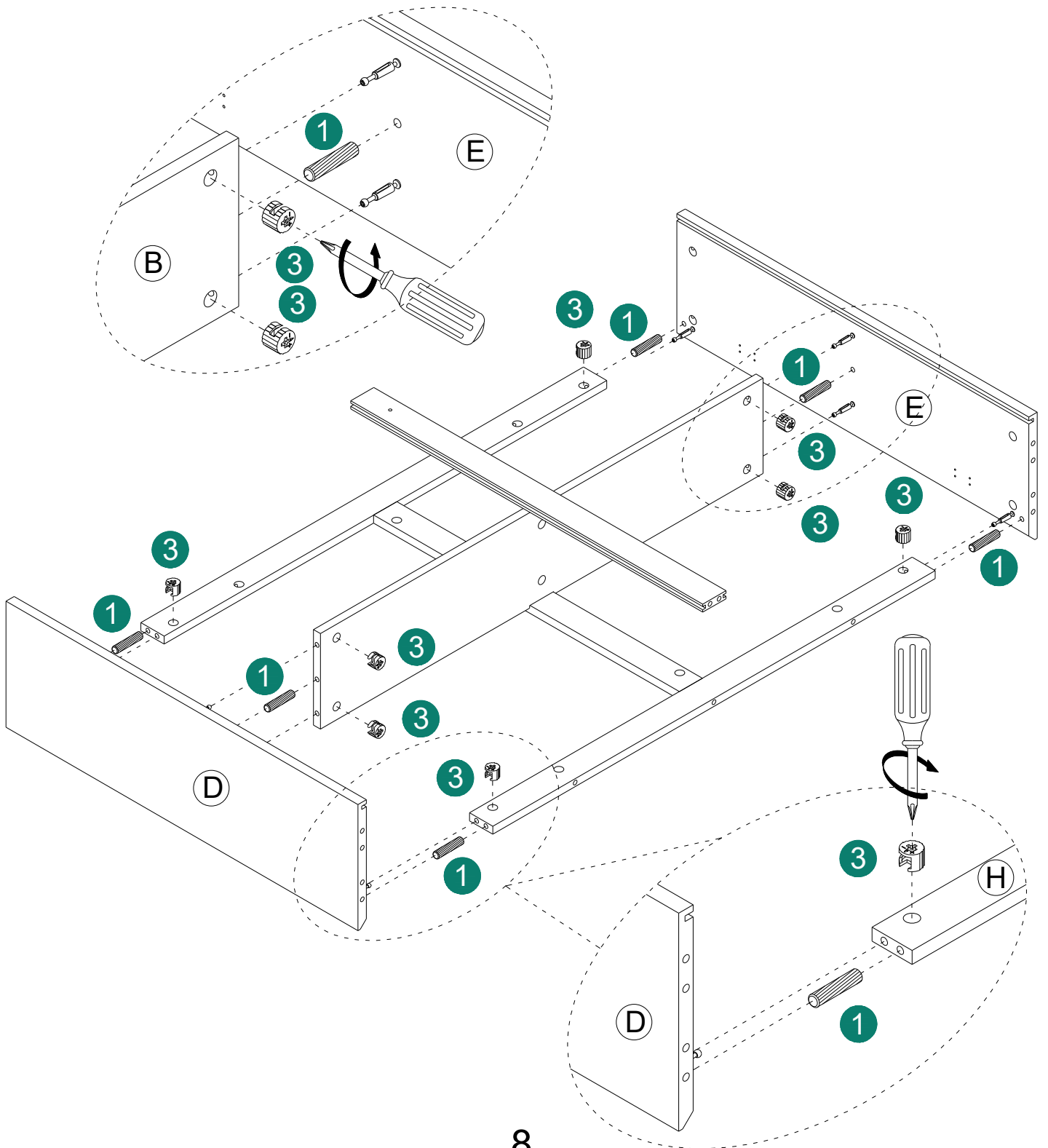
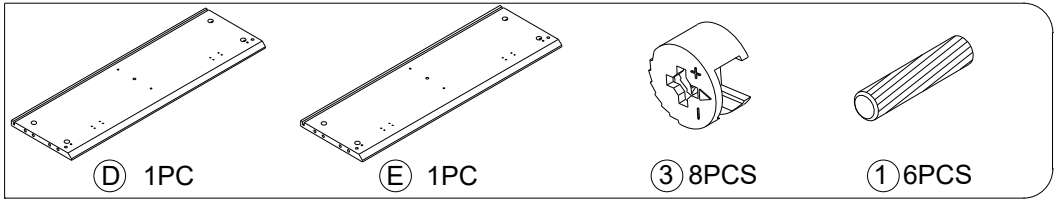


(1) 2PCS



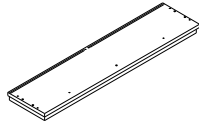
ASSEMBLY INSTRUCTIONS

4

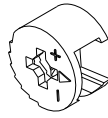


ASSEMBLY INSTRUCTIONS

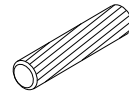
5



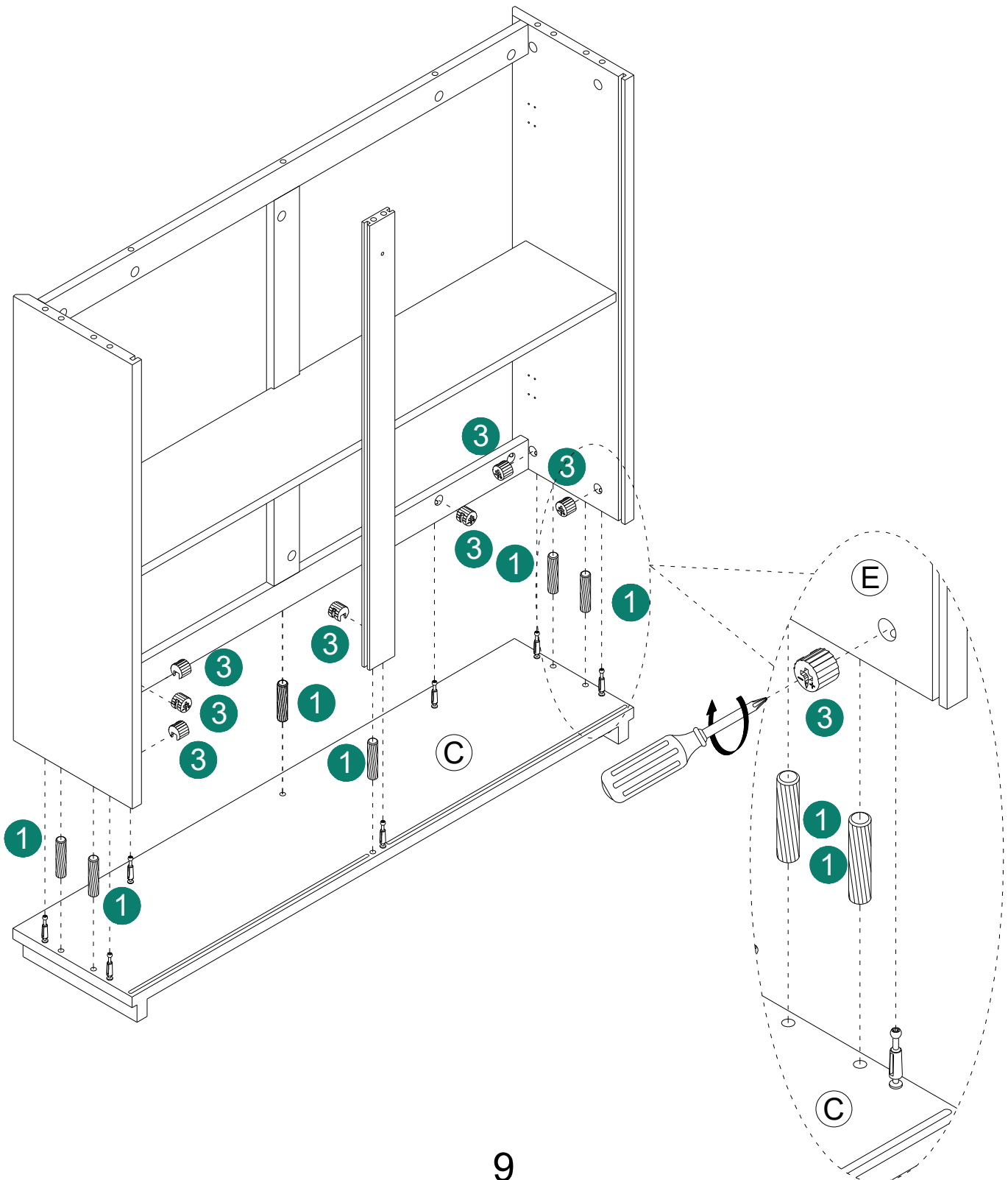
(C) 1PC



(3) 7PCS

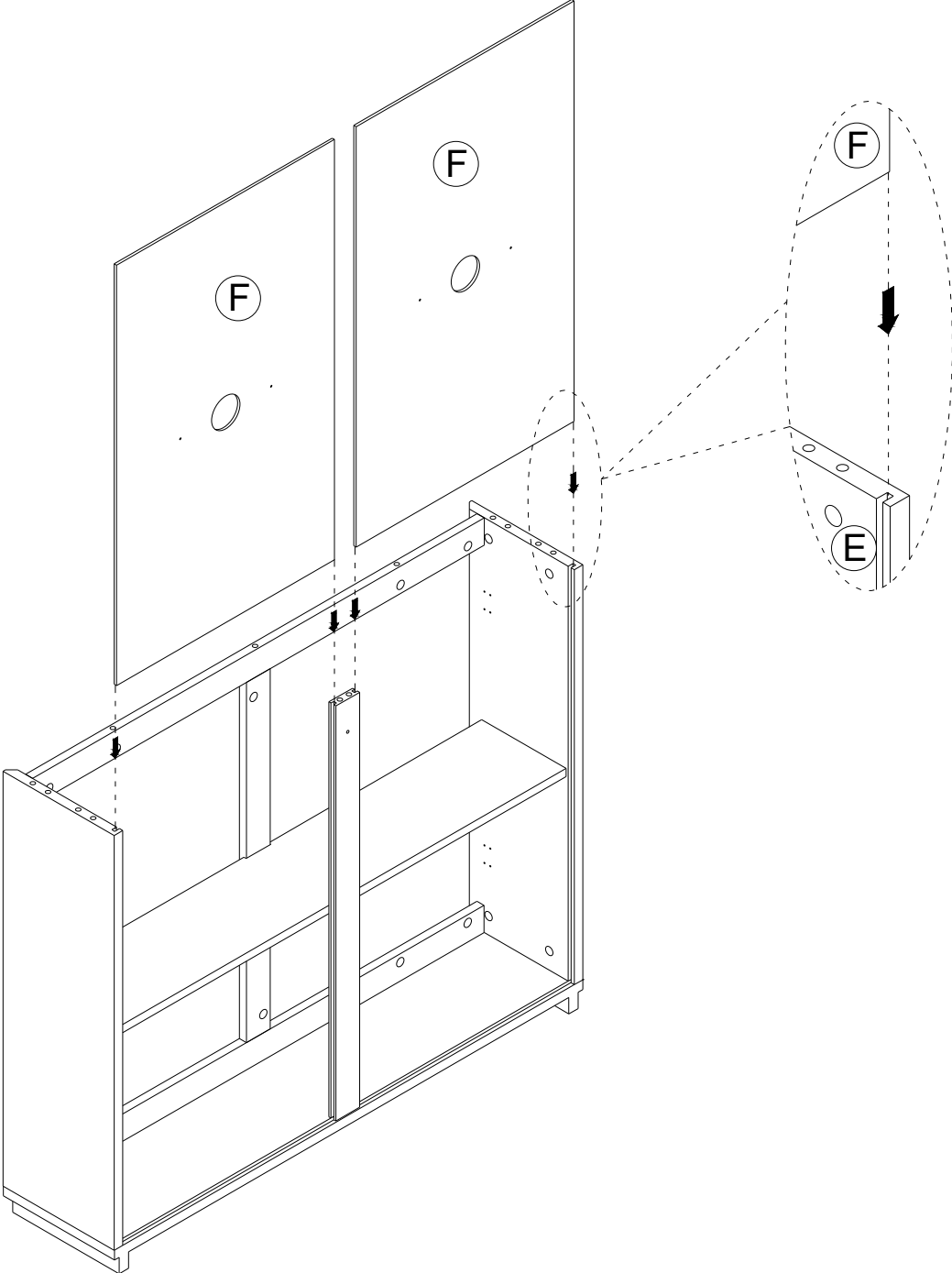
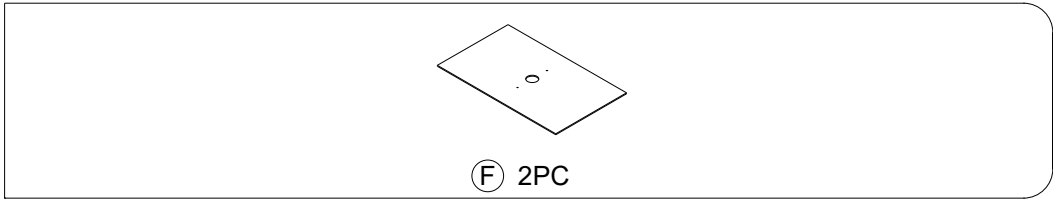


(1) 6PCS



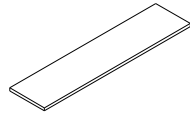
ASSEMBLY INSTRUCTIONS

6

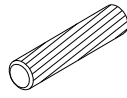


ASSEMBLY INSTRUCTIONS

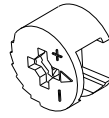
7



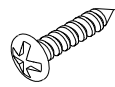
(A) 1PC



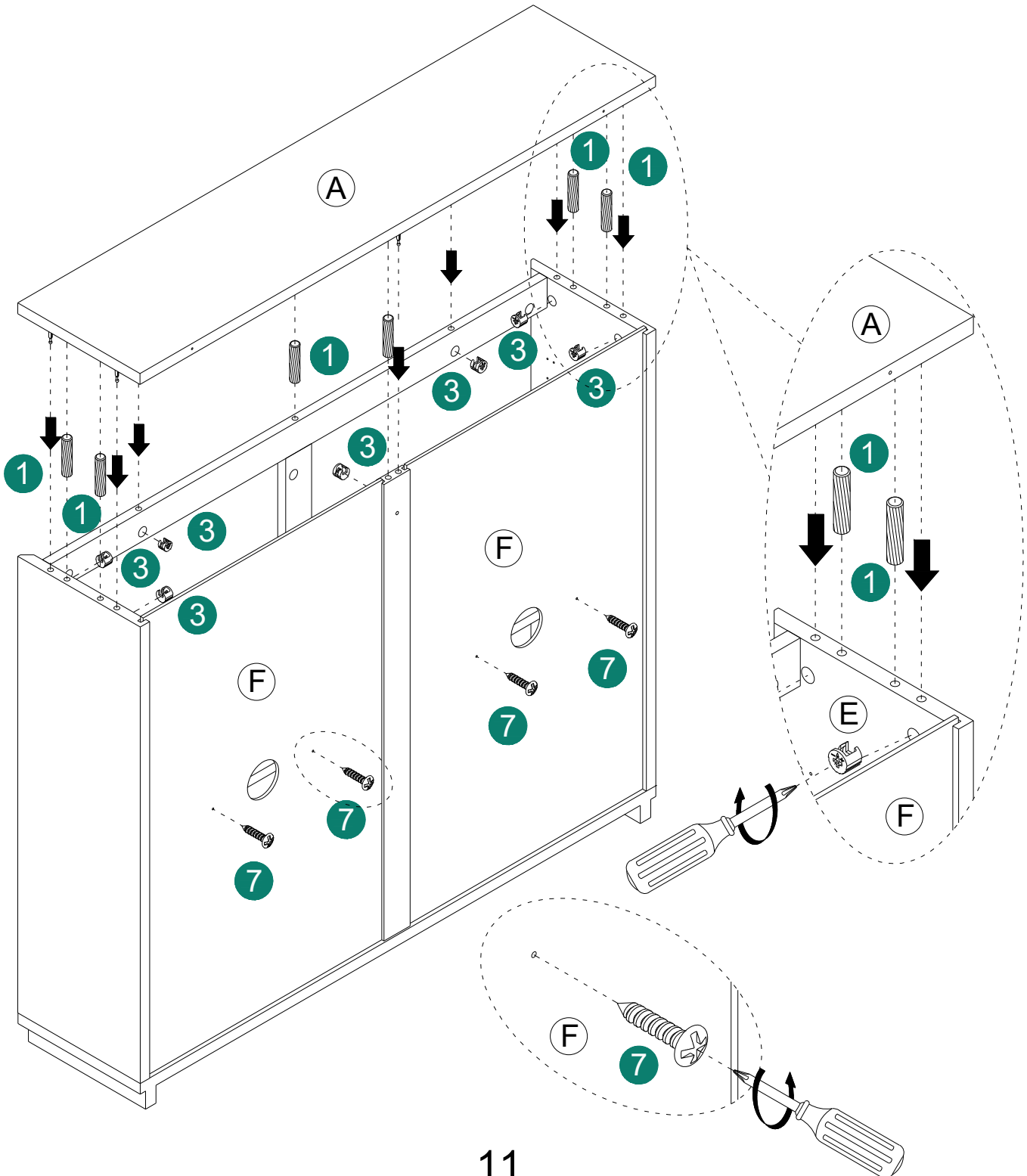
(1) 6PCS



(3) 7PCS

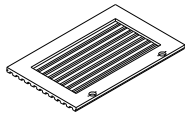


(7) 4PCS

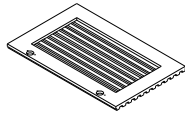


ASSEMBLY INSTRUCTIONS

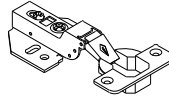
8



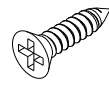
ⓐ 1PC



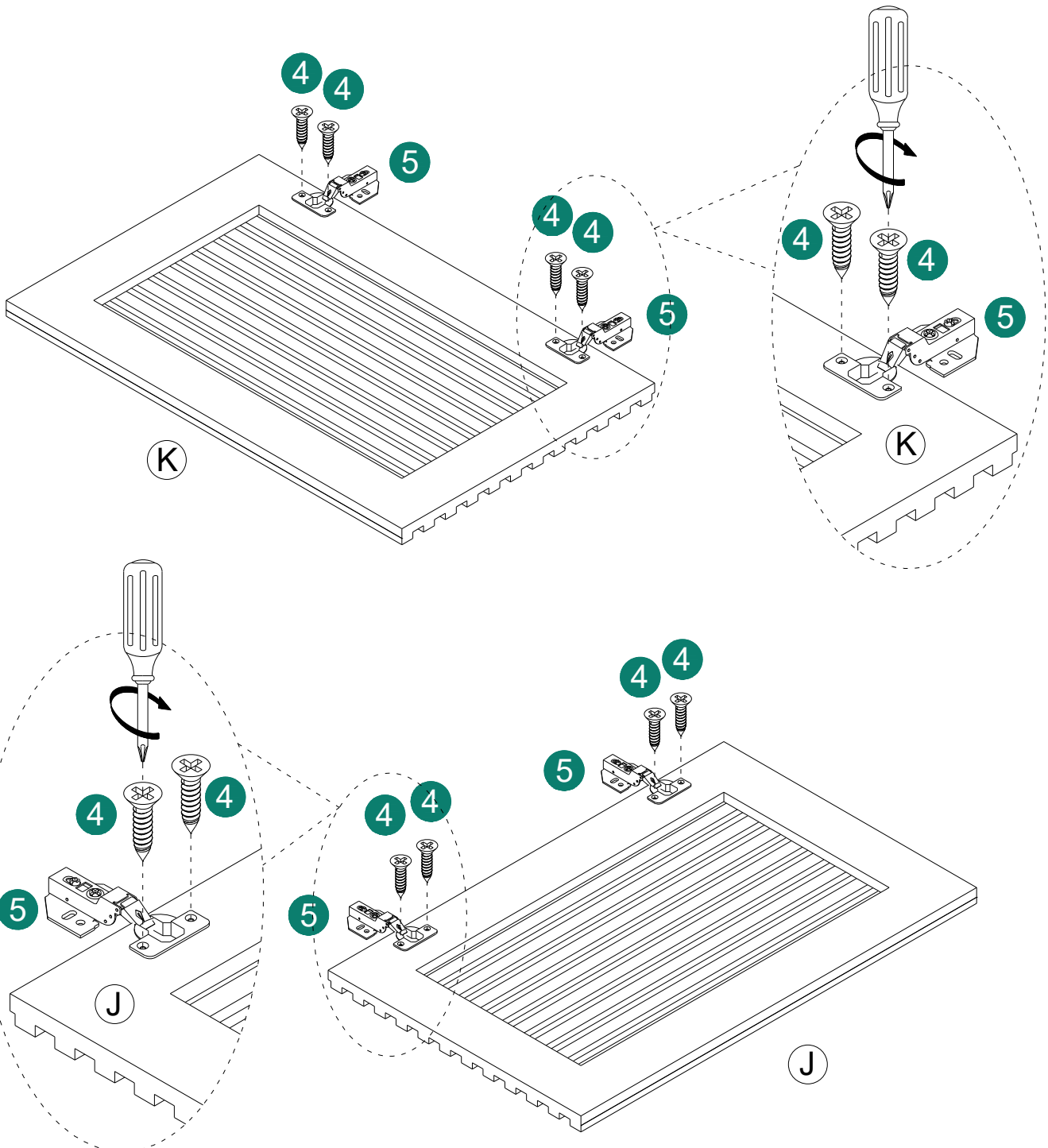
ⓑ 1PC



ⓓ 4PCS

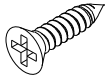


ⓔ 8PCS

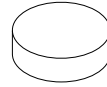


ASSEMBLY INSTRUCTIONS

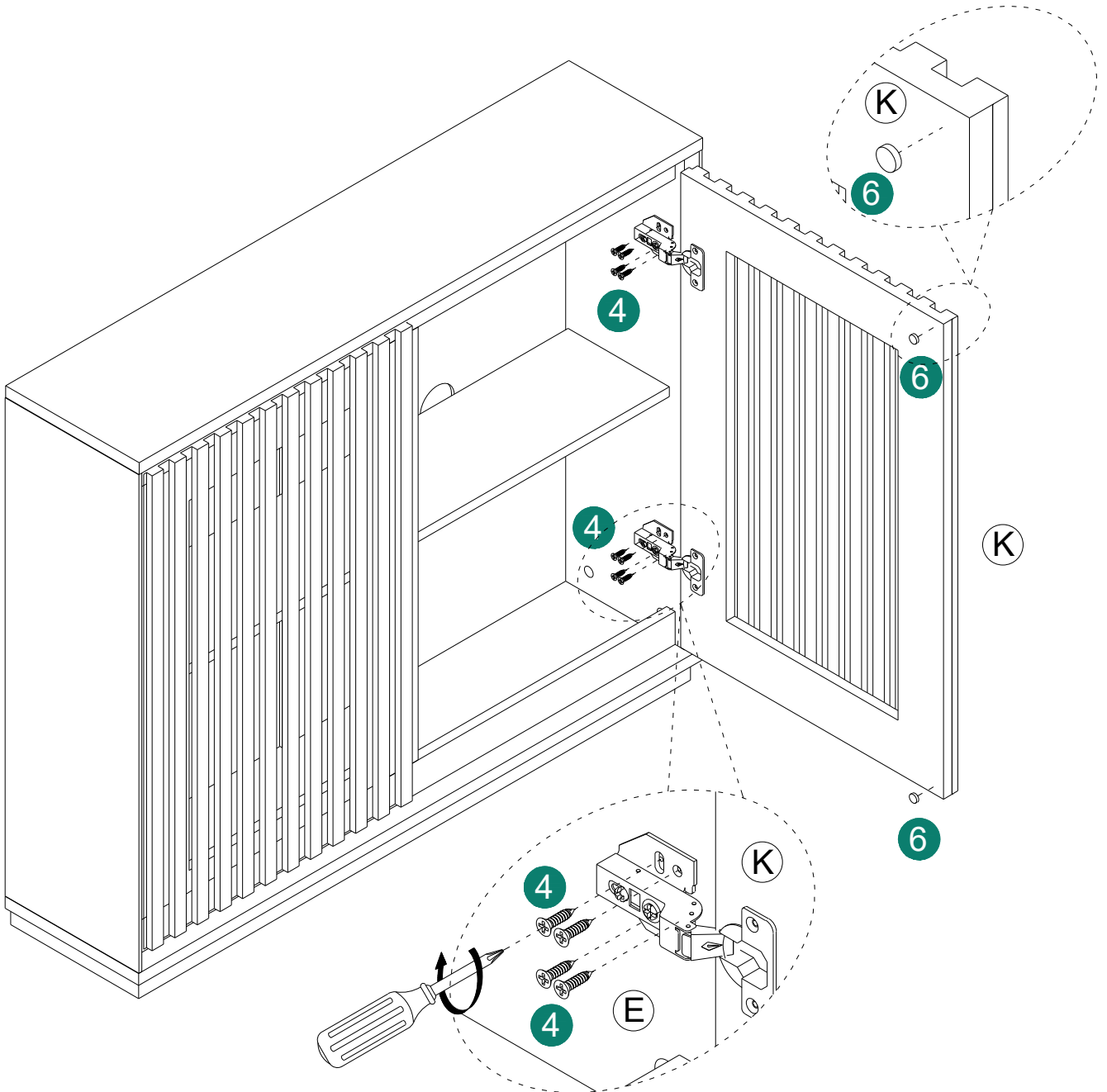
9



④ 16PCS

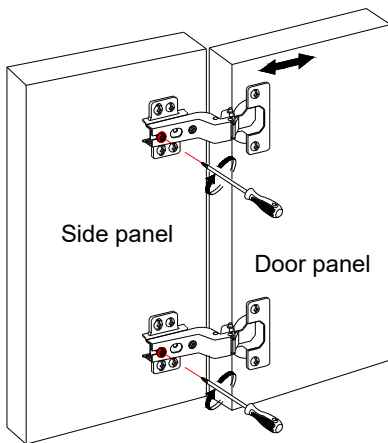


⑥ 4PCS



ASSEMBLY INSTRUCTIONS

10

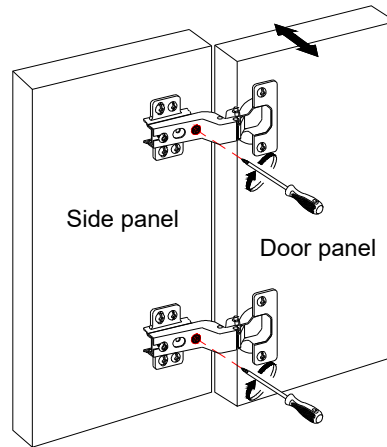


1

Front-to-Back Direction Adjustment:

Rotate the screws on the door hinges shown in the image. The door panel can be moved front-back.

Adjustment range: 4mm

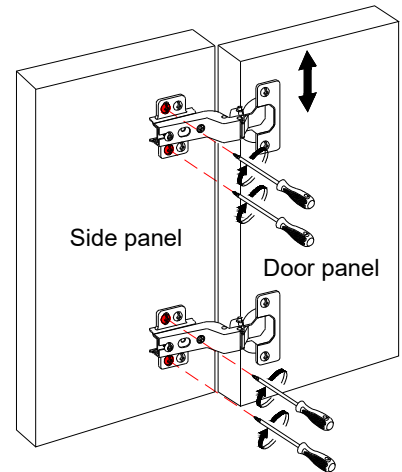


2

Left-Right Direction Adjustment:

Rotate the screws on the door hinges shown in the image. The door panel can be moved left-right.

Adjustment range: 3mm



3

Up-Down Direction Adjustment:

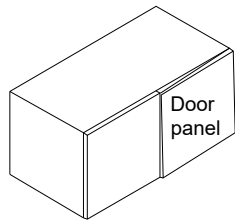
Rotate the screws on the door hinges shown in the image. The door panel can be moved up-down.

Adjustment range: 4mm

ASSEMBLY INSTRUCTIONS

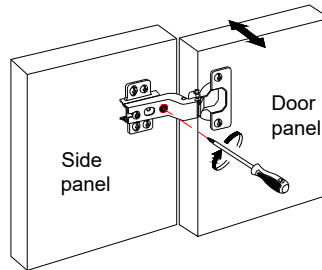
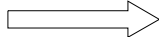
11

Common Door Panel Issues:

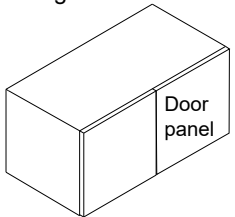
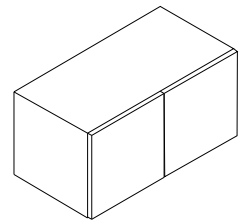
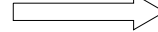


Door panel is not straight

Adjust the door hinges

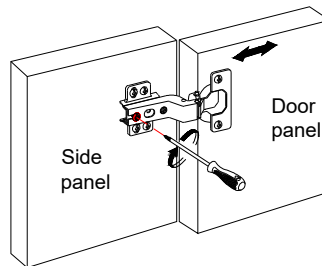
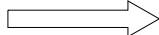


Finished

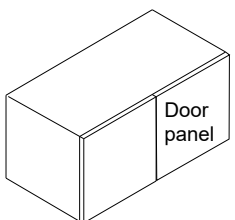
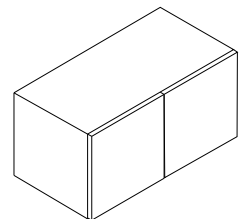
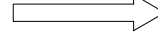


The gap between door panels is too large

Adjust the door hinges

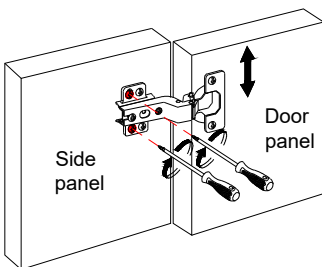
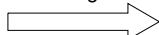


Finished

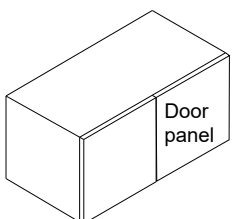
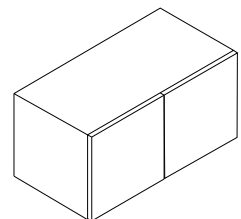
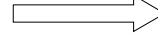


The door panels are not coplanar

Adjust the door hinges

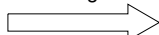


Finished



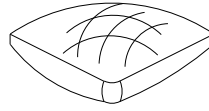
The two door panels are not at the same height

Adjust the door hinges



ASSEMBLY INSTRUCTIONS

12



8 2set

A	B	C	D	E	F
3pcs	5pcs	Ø8*3/4" 2pcs	Ø8*1-1/2" 2pcs	2pcs	Ø8*2" 1pcs

