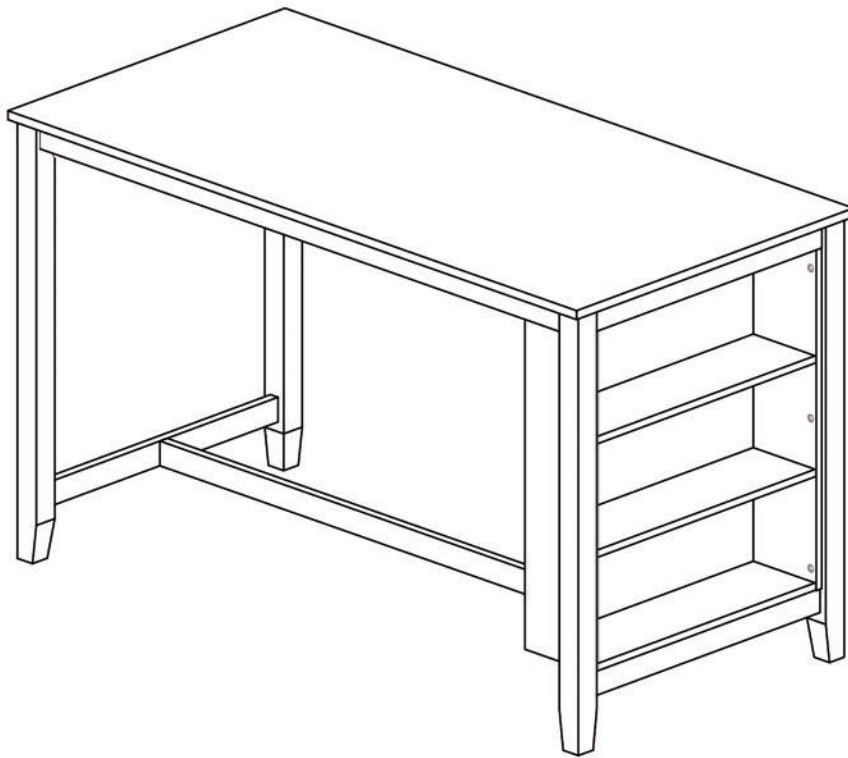


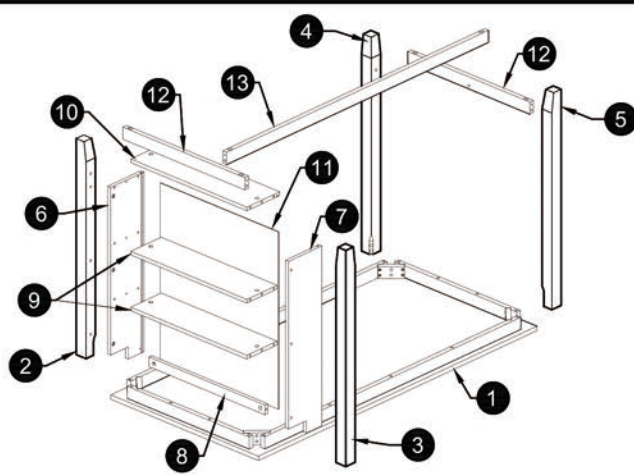
# ASSEMBLY INSTRUCTIONS

## DINING TABLE

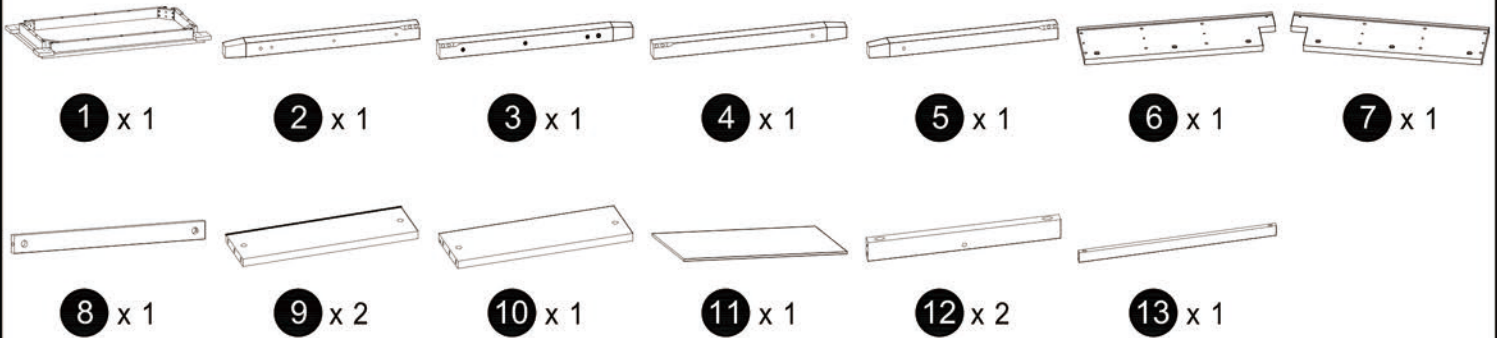


### IMPORTANT NOTE:

- PLACE ALL PARTS ON A CLEAN AND SMOOTH SURFACE SUCH AS A RUG OR CARPET TO AVOID THE PARTS FROM BEING SCRATCHED.
- BEFORE YOU BEGIN, KINDLY FOLLOW THE ASSEMBLY INSTRUCTIONS STEP BY STEP.
- DO NOT TIGHTEN ALL SCREWS AND BOLTS UNTIL THE TABLE IS FULLY SET-UP.



**CARTON CONTENT:**



**TABLE PART LISTS**

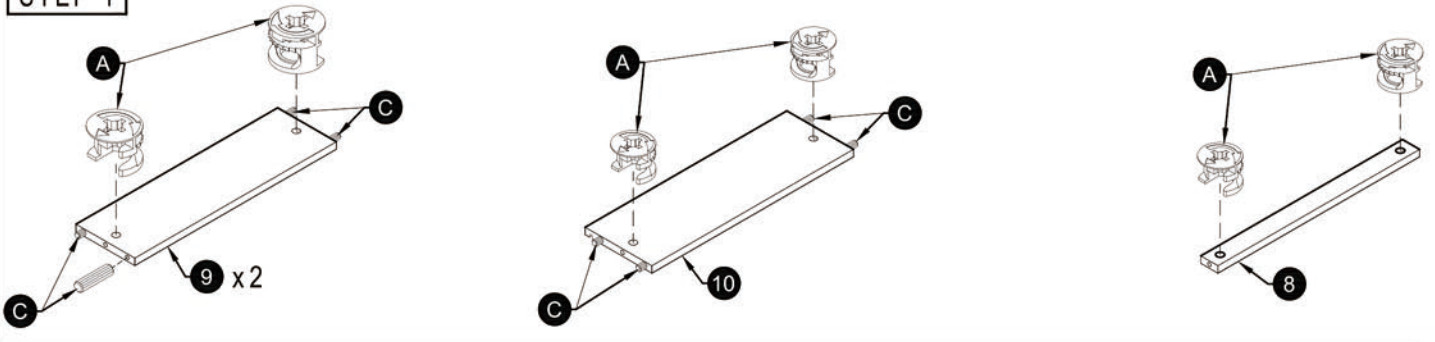
NO.	DESCRIPTION	SKETCH	QTY
1	TABLE TOP		1 PC
2	TABLE LEG (R) (RACK SHELF)		1 PC
3	TABLE LEG (L) (RACK SHELF)		1 PC
4	TABLE LEG (R)		1 PC
5	TABLE LEG (L)		1 PC
6	RACK SIDE PANEL (R)		1 PC
7	RACK SIDE PANEL (L)		1 PC
8	RACK SUPPORT		1 PC
9	RACK SHELF MID		2 PCS
10	RACK SHELF BOTTOM		1 PC
11	RACK BACK PANEL		1 PC
12	SIDE BAR		2 PCS
13	MIDDLE BAR		1 PC

**TABLE HARDWARE LISTS**

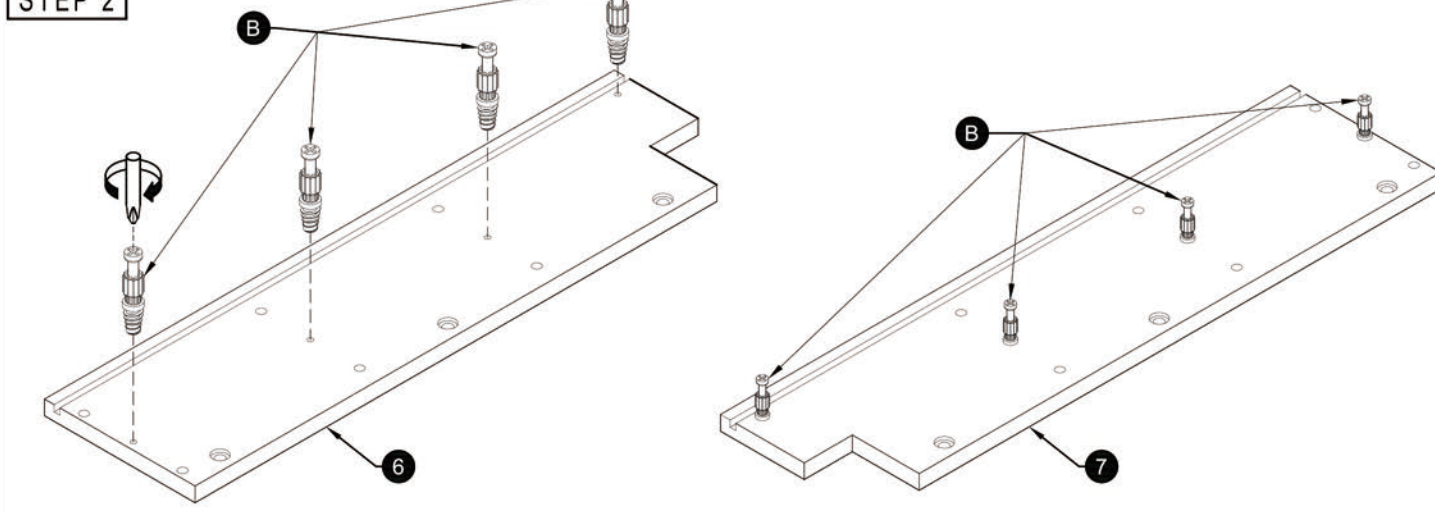
NO.	DESCRIPTION	SKETCH	QTY
A	CAM LOCK		8 PCS
B	CAM BOLT		8 PCS
C	WOOD DOWEL M8 x 30mm		12 PCS
D	HEX COMB 5/16 x 2 1/2"		8 PCS
E	JCBC BOLT M6 x 35mm		6 PCS
F	SPRING WASHER 1/4"		6 PCS
G	SPANNER 12.8		1 PC
H	WOOD DOWEL M10 x 30mm		6 PCS
I	ALLEN KEY M4		1 PC
J	C/B SCREW M4 x 38mm		2 PCS
K	C/B SCREW M4 x 45mm		4 PCS
L	C/B SCREW M3.5 x 16mm		3 PCS
M	SPRING WASHER 5/16"		8 PCS
N	FLAT WASHER 5/16"		8 PCS

NOT INCLUDED

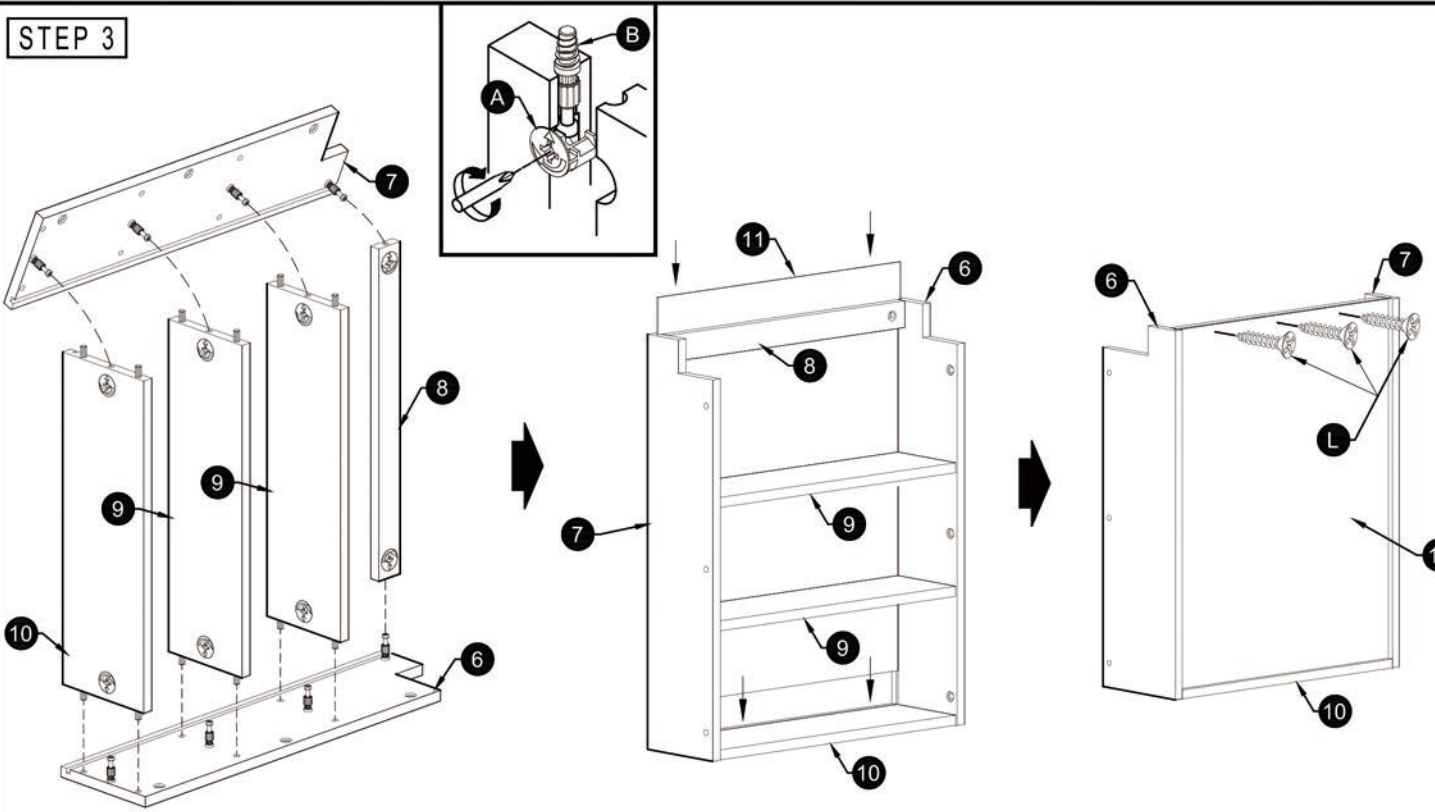
STEP 1



STEP 2



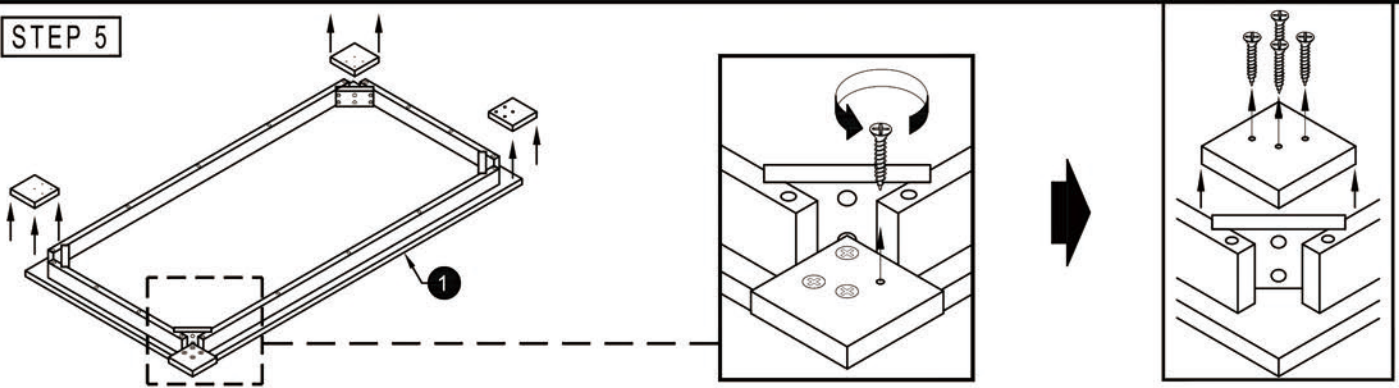
STEP 3



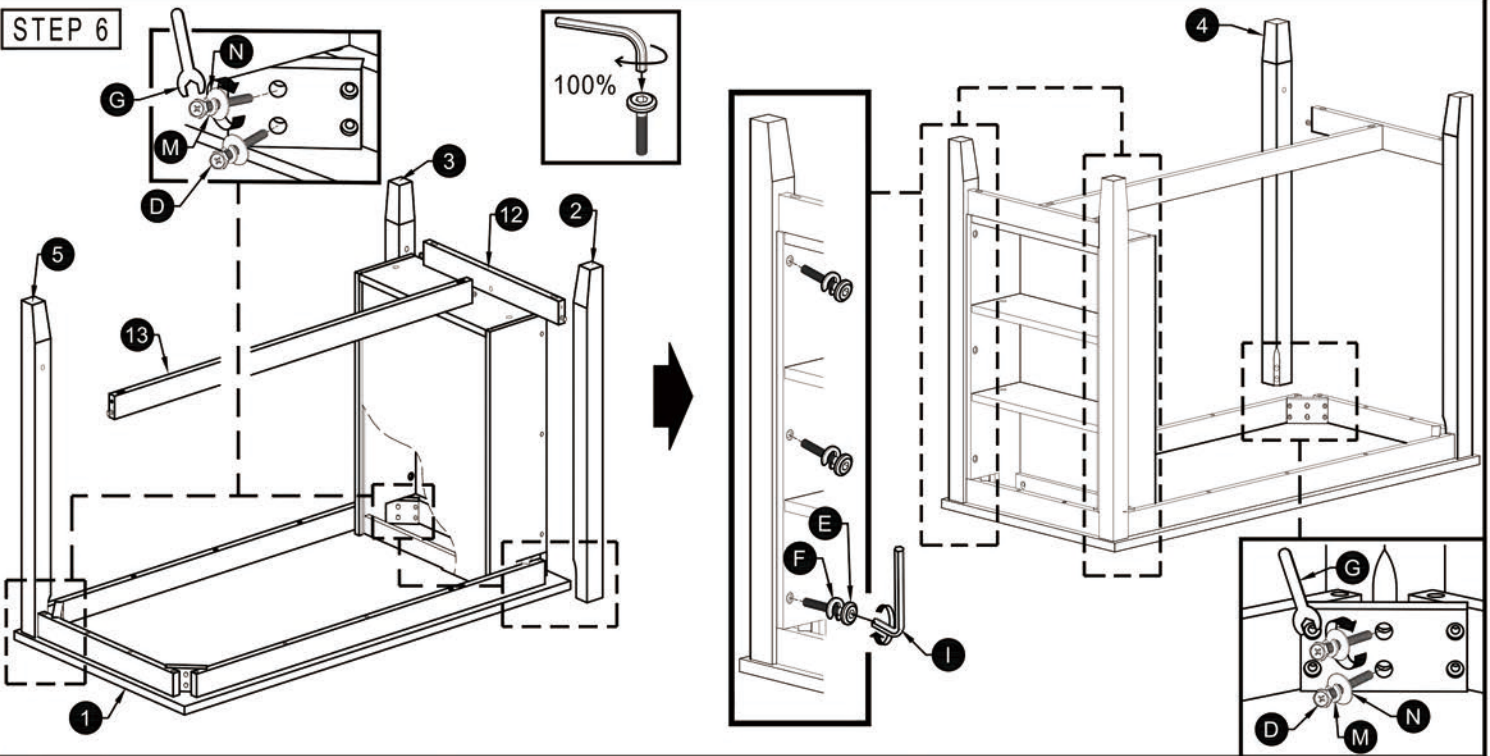
STEP 4



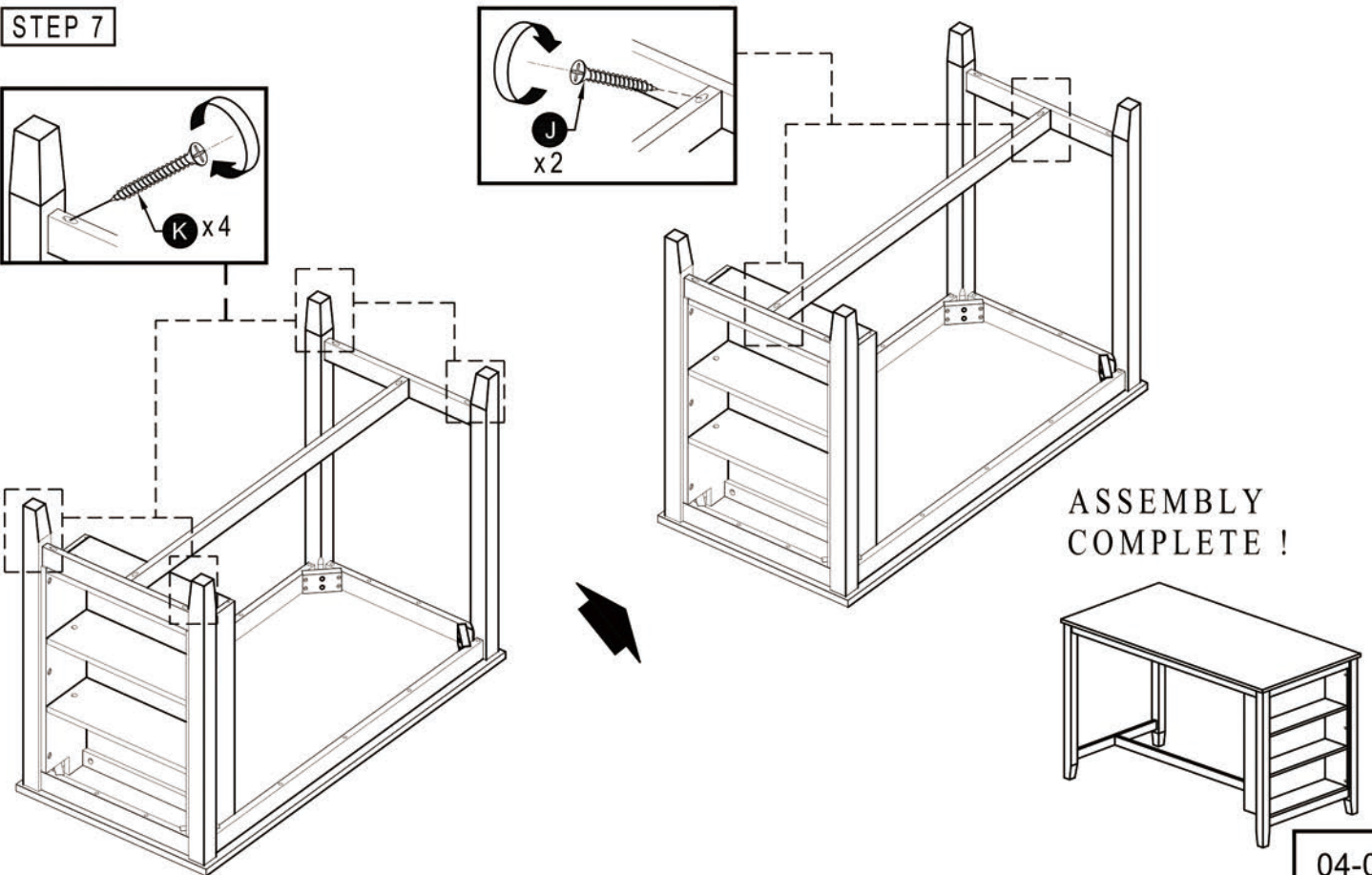
STEP 5



STEP 6

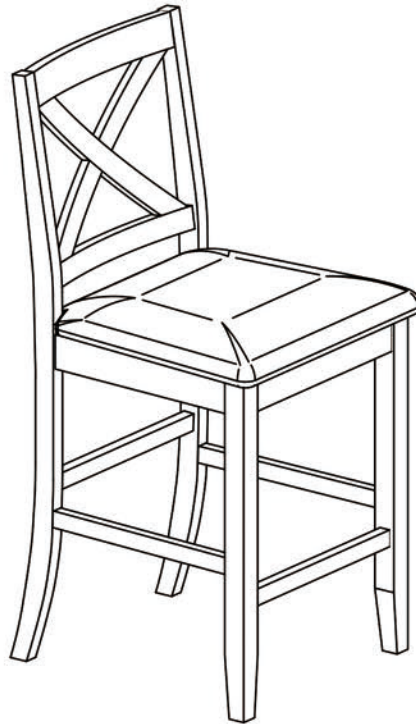


STEP 7



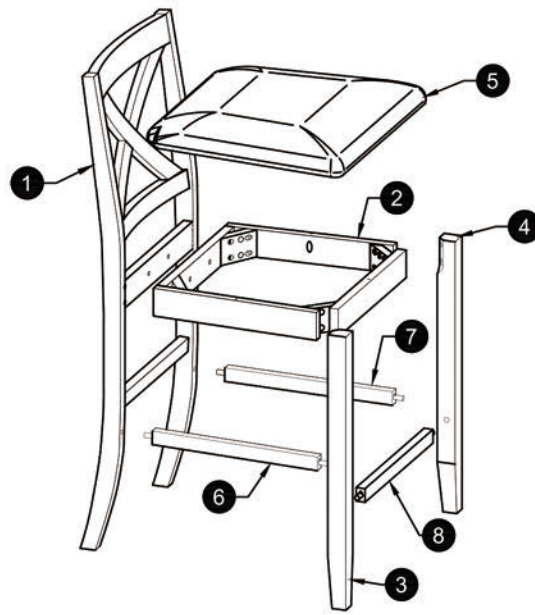
# ASSEMBLY INSTRUCTIONS

## DINING CHAIR

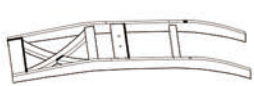


### IMPORTANT NOTE:

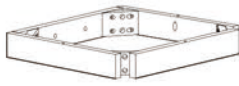
- PLACE ALL PARTS ON A CLEAN AND SMOOTH SURFACE SUCH AS A RUG OR CARPET TO AVOID THE PARTS FROM BEING SCRATCHED.
- BEFORE YOU BEGIN, KINDLY FOLLOW THE ASSEMBLY INSTRUCTIONS STEP BY STEP.
- DO NOT TIGHTEN ALL SCREWS AND BOLTS UNTIL THE CHAIR IS FULLY SET-UP.



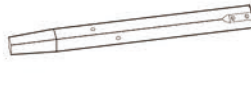
### CARTON CONTENT:



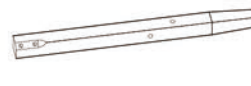
1 x 4



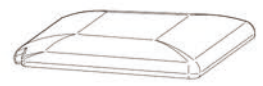
2 x 4



3 x 4



4 x 4



5 x 4



6 x 4



7 x 4



8 x 4

### CHAIR PART LISTS

### CHAIR HARDWARE LISTS

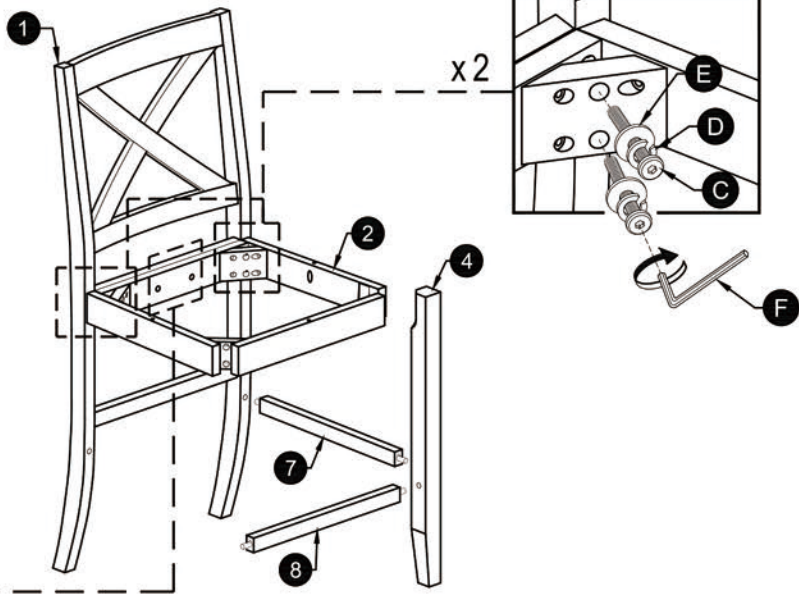
NO.	DESCRIPTION	SKETCH	QTY
1	BACK LEG		4 PCS
2	BOX SEAT		4 PCS
3	FRONT LEG ( L )		4 PCS
4	FRONT LEG ( R )		4 PCS
5	SEAT		4 PCS
6	STRETCHER ( L )		4 PCS
7	STRETCHER ( R )		4 PCS
8	STRETCHER ( F )		4 PCS

NO.	DESCRIPTION	SKETCH	QTY
A	JCBC BOLT M6 x 35mm		8 PCS
B	JCBC BOLT M6 x 60mm		16 PCS
C	JCBC BOLT M6 x 80mm		16 PCS
D	SPRING WASHER 1/4"		40 PCS
E	FLAT WASHER 1/4"		40 PCS
F	ALLEN KEY M4		1 PC
G	C/B SCREW M4 x 30mm		12 PCS
H	C/B SCREW M4 x 45mm		24 PCS

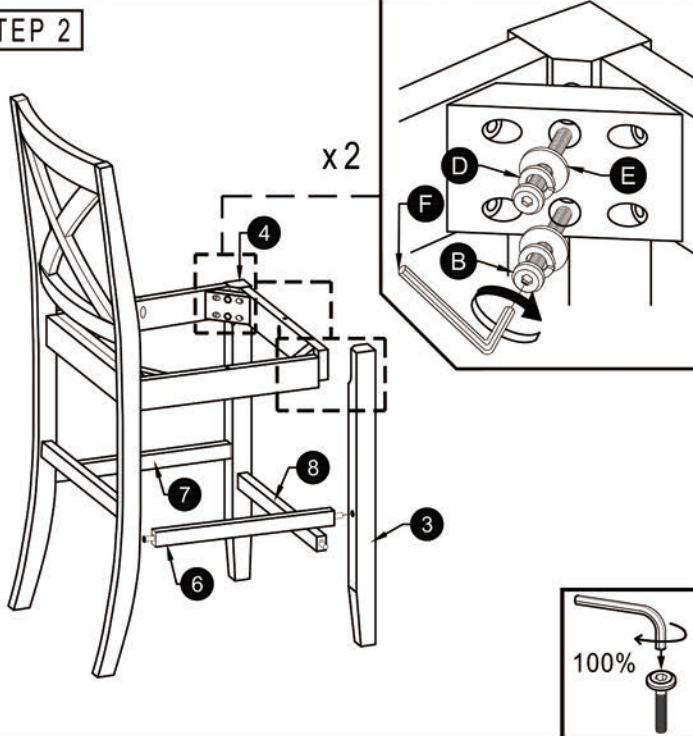
NOT INCLUDED



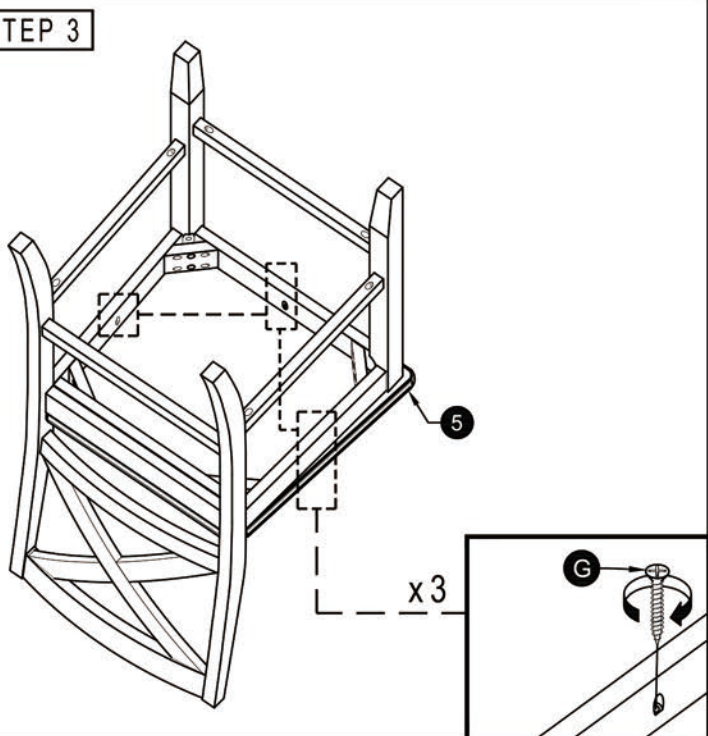
STEP 1



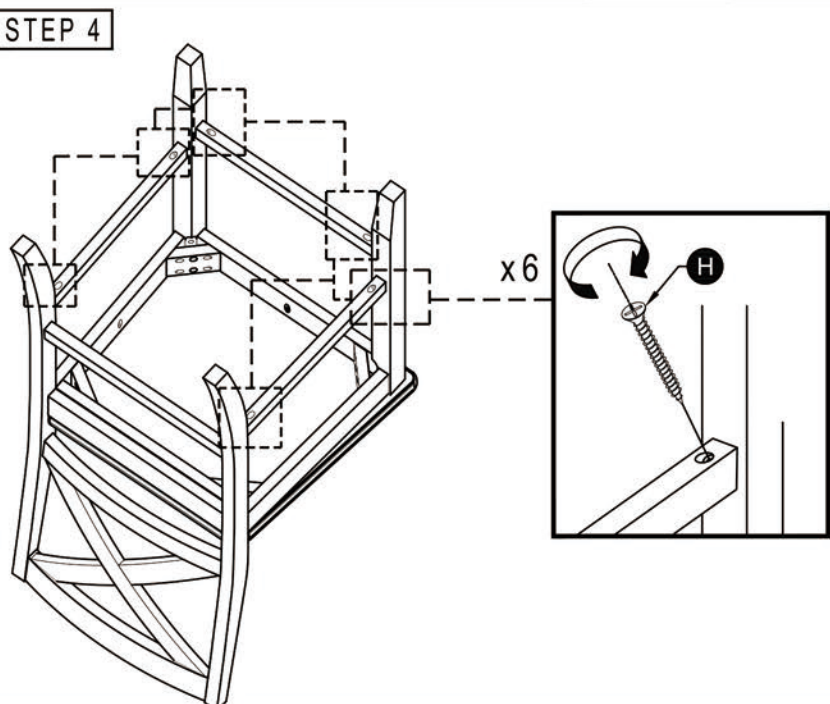
STEP 2



STEP 3



STEP 4



ASSEMBLY COMPLETE !

