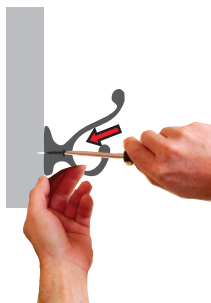
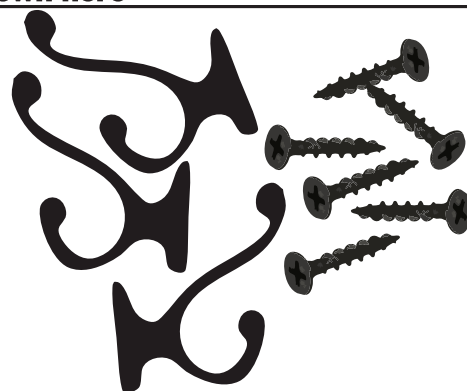


Your mirror depending on the size and orientation ordered, will have pre-drilled pilot holes for attaching your hooks as shown here

**You will have hooks and mounting screws in your package.
It's a good idea to mount the hooks prior to hanging your mirror.**



You will line up the hook with the pre-drilled pilot hole on your frame and insert the screw through the front into the frame like shown here. A good snug fit is satisfactory, you don't want the hook to be able to move once tightened.

Once you have installed all hooks, you may hang your mirror in your desired location.

