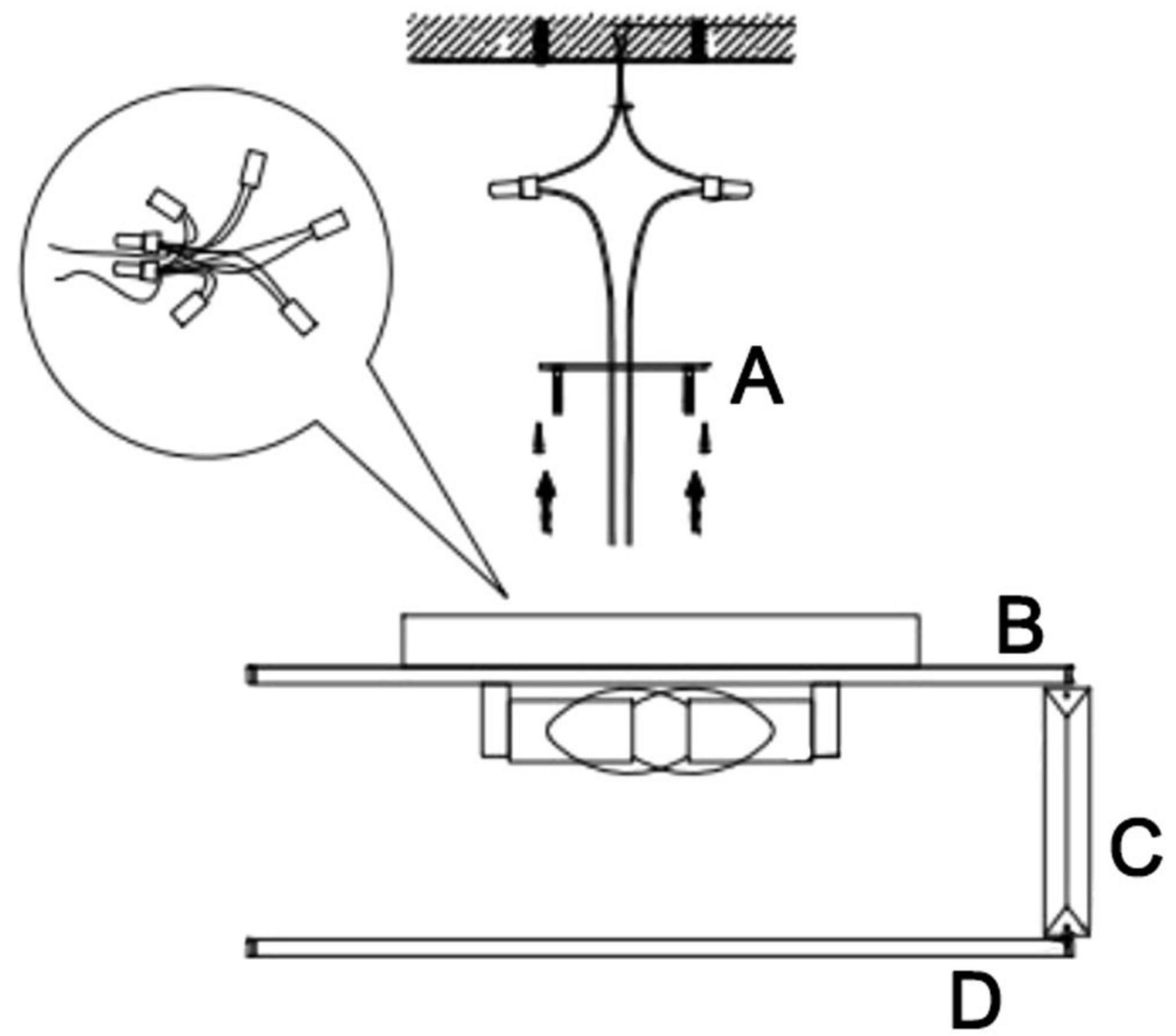


Assembly Instruction Sheet for Model HL503390

Package Contents

Part	Description	Quantity
A	Mounting Bracket	1 pc.
B	Fixture Body	1 pc.
C	Crystal Rod	multi pcs.
D	Acrylic Diffuser	1 pc.



STEP 1

Mark the drilling position on ceiling with the help of the Mounting Bracket(A).
Drill holes on the marks and stick the expansion anchors into the holes.
Fix the Mounting Bracket(A) to the expansion anchors with self-tapping screws.

STEP 2

Hold the fixture close to the ceiling.
Connect live line to wire color Black/Red from the Fixture Body(B).
Connect neutral line to wire color White/Blue from the Fixture Body(B).

STEP 3

Attach the Fixture Body(B) to the Mounting Bracket(A).

STEP 4

Insert your bulb to the bulb base.

STEP 5

Hang the Crystal Rod(C) on the Fixture Body(B) with the help of clip.

STEP 6

Slide one side of the Acrylic Diffuser(D) into the Fixture Body(B)
and then gently bend the other side for it to lock in place.

Your fixture is now assembled and ready to use.