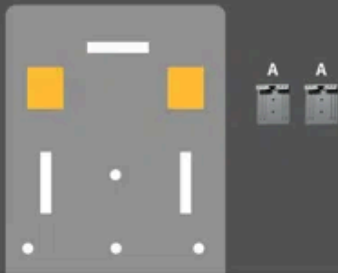
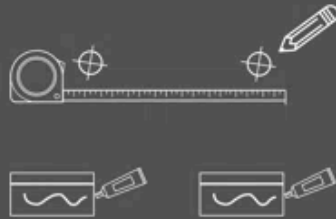


Drill-free Wall Mount

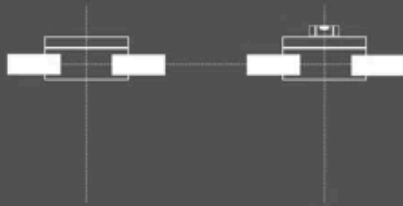
Complimentary Accessories



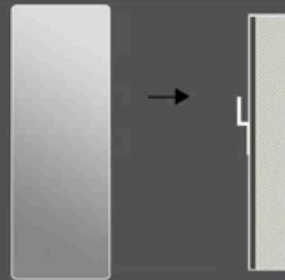
1. Fix the hanging piece A on the position just covered with glue. Measure the hole distance between the hanging plate A.



2. Mark out the determined locations of drilling on the wall surface. Apply glue to the back of hangers



3. Glue hangers to the marked locations of wall. Make adjustment with a gradient before pressing hangers hard. Stick auxiliary stickers to both sides of a hanger.



4. Mount the mirror onto the wall when glue is completely dry