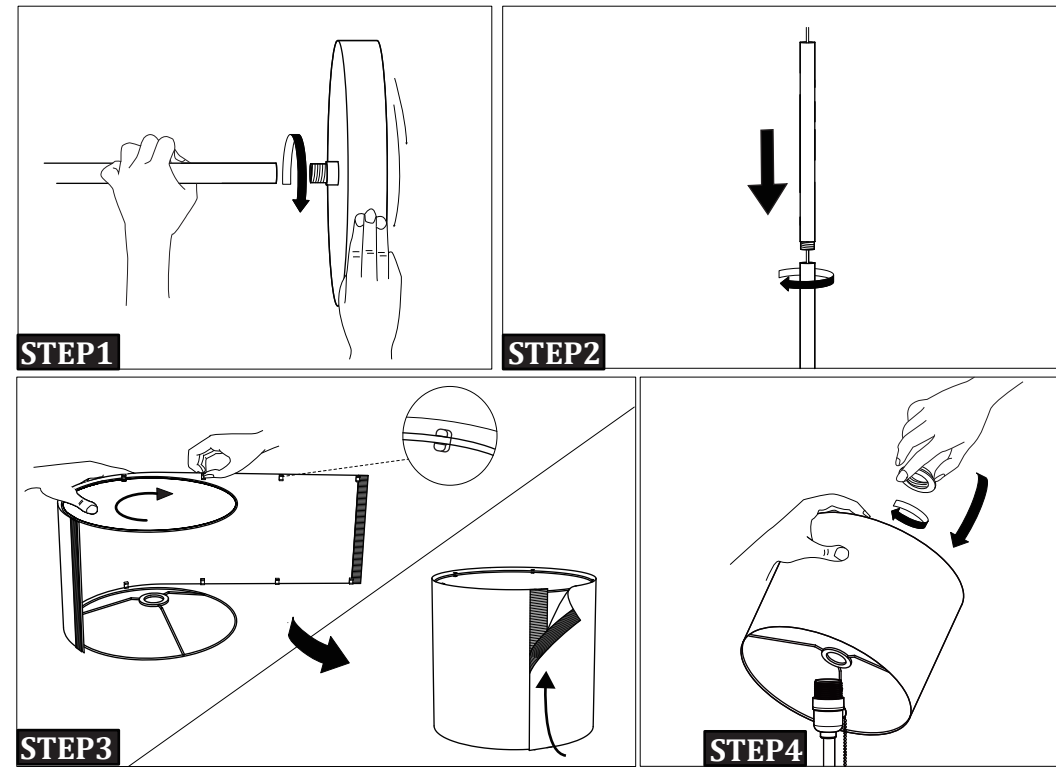


AA:Lampshade **BB:**Shade Frames **CC:**Socket Ring **DD:**Lamp Pole **EE:**Lamp Base



INSTALLATION GUIDE

First of all,make sure that all parts are present.

STEP1 Screw **DD** and **EE** tight by spinning **EE**.

STEP2 Install each part of **DD**.

STEP3 Fit the **BB** part in the **AA** part, Attach one edge of the velcro to another.

STEP4 Install **CC**.

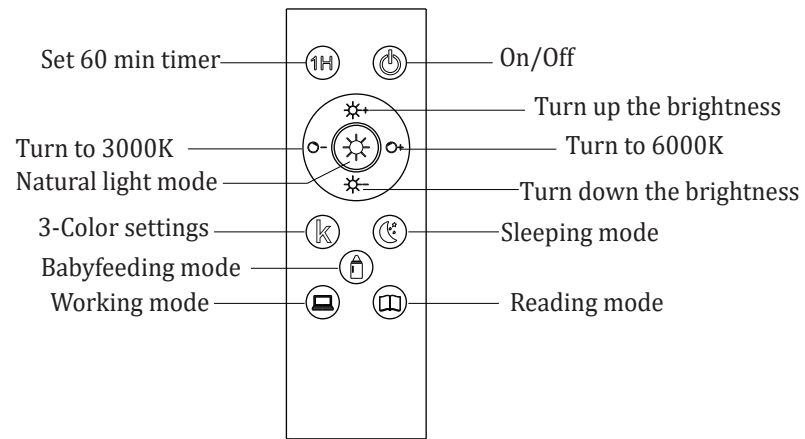
TROUBLE SHOOTING

1.After power on the Lamp doesn't light up→Re-tighten the bulb and try to press the switch again.

2.Lampshade Unstable→Tighten the **CC** on the lampholder

3.The lamp is shaking or lean Recheck the STEP2 & STEP3 whether have been tighten

REMOTE CONTROL FUNCTION



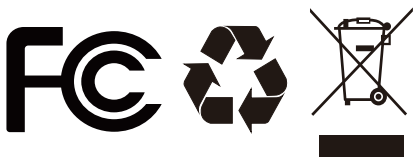
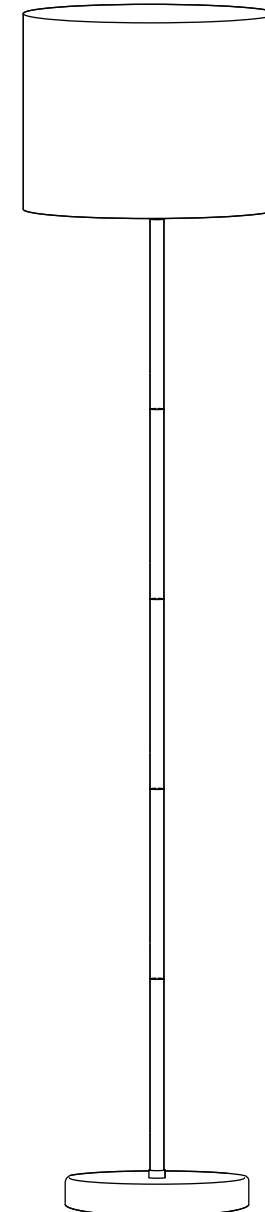
TROUBLE SHOOTING

1.If your lamp does not work,please make sure that plug is ☒irmly in and 2 batteries were installed in the remote, then press the foot switch and on/off button of the remote to turn on.

2.If the remote can not control the bulb, please try to reconnect remote to the bulb as following step:

After the bulb turn on,long press the remote's on/off button within 3 seconds until the bulb ☒lashes

USER GUIDE



This device complies with Part 15 of the FCC Rules. Operation is subject to the following two conditions: (1) this device may not cause harmful interference, and (2) this device must accept any interference received, including interference that may cause undesired operation.