



Smart Wireless Water Fountain

PHP-WF-001 V2.0 EN

Contents

Safety Precautions	1
Product Overview	3
Power The Fountain	5
Smart Sense Mode	5
How To Install	7
Power On	10
Power Off	10
Indicators And Buttons	11
Indicators	11
Buttons	11
How To Connect App	12
App Download And Installation	12
Pet Fountain Configuration	13
Meet Your Smart Fountain	14
How To Disassemble	17
Change The Filter And Foam	18
Troubleshooting	19
Cleaning Instructions	20
Specifications	20
Battery Pack	21
FCC Statement	22
Warranty	22

Safety Precautions

Warning

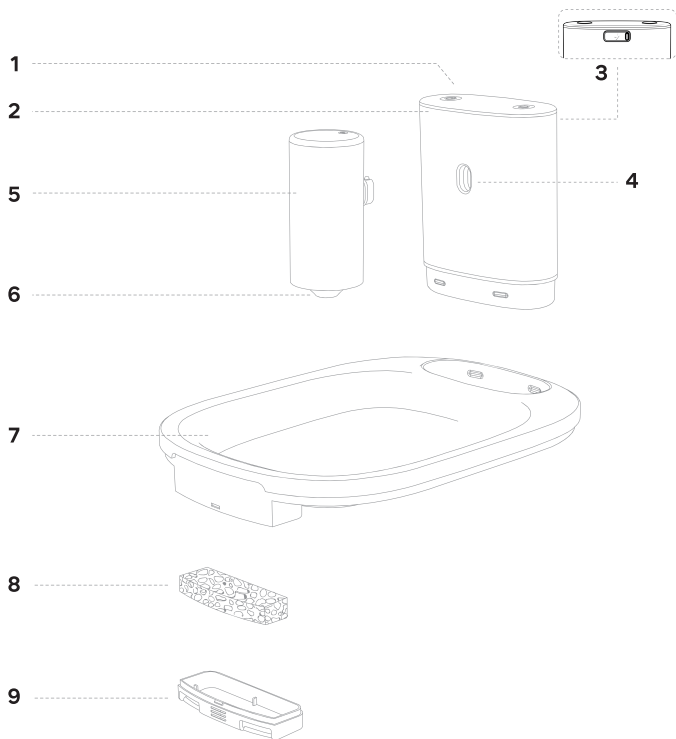
- Dispose of all packaging materials properly. Keep the polybags away from children and pets as these bags could cause suffocation.
- Do NOT allow children to play with, in or around the pet water fountain.
- To avoid injury, please keep close supervision when the appliance is used near children.
- Do NOT use the water fountain with pets not able to reach the water tray or with any physical disability.
- Do NOT place any foreign object in the water tank.
- Do NOT disassemble the pet fountain other than components as instructed in this User Manual.
- Do NOT use the pet fountain for anything other than its intended use.
- Only use attachments recommended or sold by the manufacturer. The use of attachments not recommended or sold by the manufacturer may cause an unsafe condition. Do NOT modify the pet fountain.
- Do NOT operate any appliance if the unit is malfunctioning or has been damaged. Do not attempt repairs on the device yourself. Contact our customer service immediately for further instructions.
- Be sure to disconnect the power supply for safety when the appliance is not in use.
- Please disconnect the power supply before maintaining and cleaning the machine.
- Always unplug the appliance when not in use, or before putting on or taking off parts and before cleaning.
- The power adapter and wire plug must not be flooded during cleaning.
- This product is for indoor use only.

- This product is not allowed to run without water.
- If the plug of this device gets wet, turn off the electricity of that wall outlet. Do NOT attempt to unplug.
- Check the device after installation. Do NOT plug in if there is water on the contact points or plug.
- To avoid tripping, always position the power cord out of the way of foot traffic.
- Do not use the appliance in the bathroom.
- Replace the filter at least once every month or when the flow rate has noticeably reduced. For two or more cats, you may need to replace the filters more regularly if it becomes blocked.
- For sparkling clean results, the stainless steel parts of your machine is the ONLY dishwasher-safe part! To ensure the long life of your appliance, please wash other components by hand with warm, soapy water.

Caution

- Do NOT allow pets to chew on or swallow any parts. If you are concerned about the power cord, purchase a cord conduit (a hard-plastic protector) at any hardware store to protect the power cord.
- If an extension cord is necessary, one unit with a proper rating should be used.
- Do NOT install or store the pet water fountain where it will be exposed to weather or temperatures below 0° C / 40°F.
Radiation Exposure Statement
- To maintain compliance with FCC's RF Exposure guide-lines, This equipment should be installed and operated with minimum distance of 20cm from your body.

Product Overview



1. Control Panel

2. Main Unit

3. Charging Port

4. Port for UF Filter

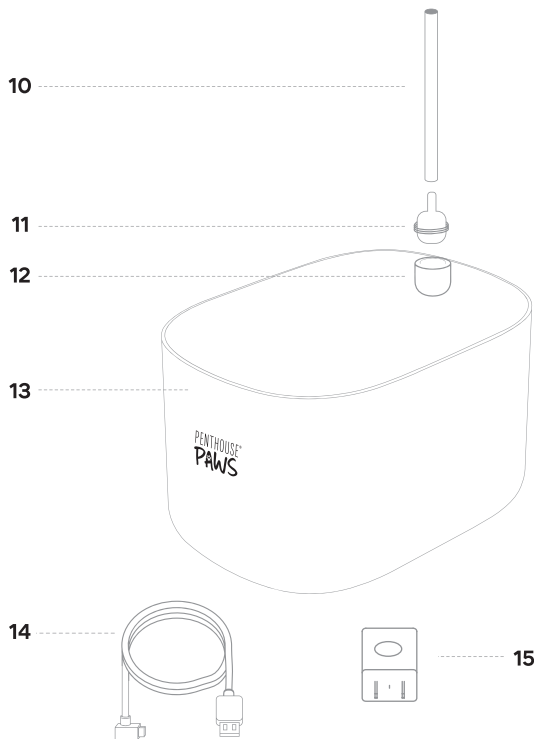
5. Ultrafiltration Filter

6. Water Outlet

7. Water Tray

8. Foam Filter

9. Foam Filter Box



10. Water Pipe
11. Water Inlet

12. Round Filter
13. Water Tank

14. Type-C Cable
15. Adapter

Power The Fountain

The fountain is powered by an built-in rechargeable lithium battery pack.

Attention

1. The lithium battery pack is non-removable, do not attempt to disassemble it.



2. Before first use, please charge it for 2.5 hours.

3. When the low battery indicator lights up, use the included power adapter and cable to charge the device for about 5 hours.

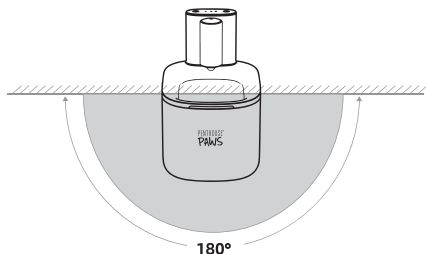
4. The fountain can work during charging.

Smart Sense Mode

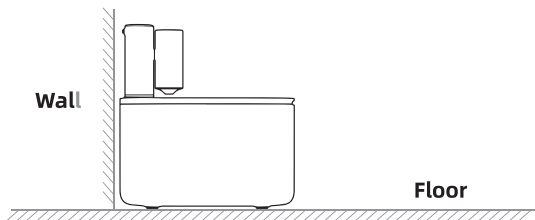
This innovative feature automatically detects your pet's presence and dispenses fresh, flowing water for 30-45 seconds.

Notes:

1. This fountain has a motion sensor that covers a wide area. It can detect movement up to about 2 feet (60 centimeters) in front of it, The sensing angle is 180°.



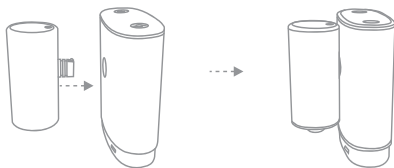
2. It's recommended to position the fountain with its back against a wall. This way, the sensor can focus on movement happening in front of the fountain.



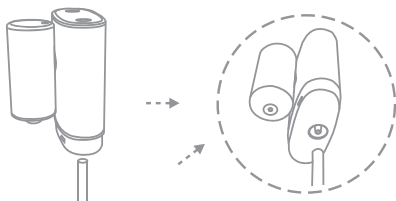
3. To attract pets to drink, the fountain automatically dispenses water once every 2 hours.

How To Install

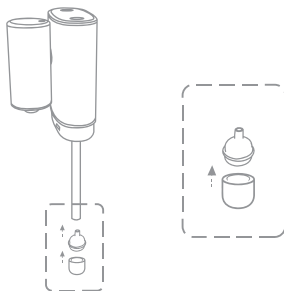
1. Mounting the filter box to Fountain Hub.



2. Attach water line to Fountain Hub underneath.

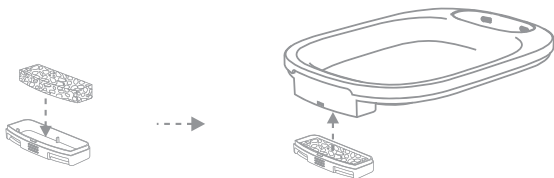


3. Insert the weight (sinking bead) into the water line hose (soft pipe).

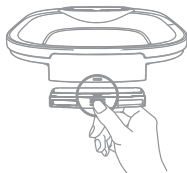


4. Add the Foam Filter to the Filter Tray:

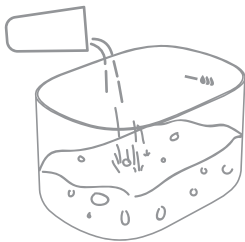
- Locate the filter tray, positioned under the stainless steel tray.
- Place the foam filter inside the filter tray. (You might need to press it down slightly to fit.)



How to Disassemble
Press and pull it down



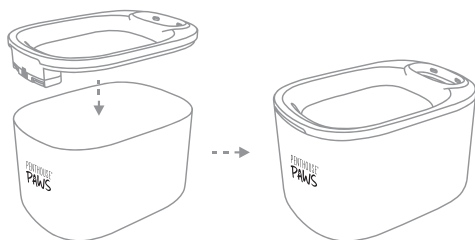
5. Add water inside the tank to the fill line.



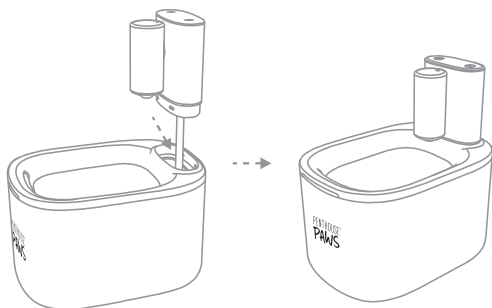
Notes:

Do not exceed the maximum water level.

6. Install the water tray (including foam filter) to Tank.



7. Install the Fountain Hub to Water Tray.

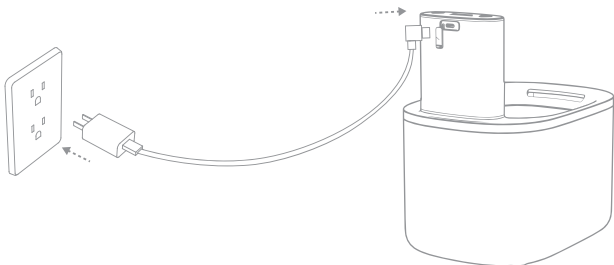


Power On

Add water to the tank, and then press the power button to power on the device.

Notes:

1. To extend the lifespan of the water pump, preventing it from sucking in air which can cause slow water output and bubbles, please make sure the tank has enough water before powering it on.
2. If the battery level is low, use the included power cable and adapter to charge the device.



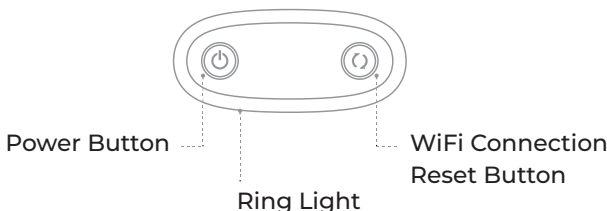
Power Off

Press the power button to power off the device.

Notes:

For long-time storage, please fully charge the device before powering it off.

Indicators And Buttons



Indicators

Indicator	Color	Refer to	Indicator Status	Fountain Status
Ring Blue	Blue		Flashing	Charging
			Steady On	Fully Charged
			Flashing	Fountain is dispensing water due to movement.

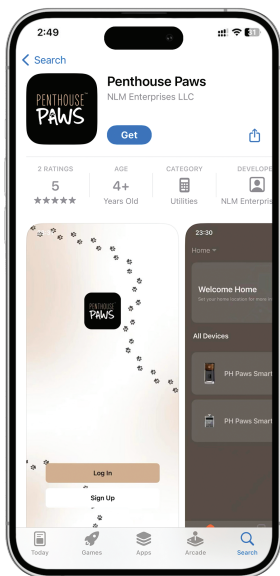
Buttons

Button	Icon	Function	Method	Description
Power Button		Power On	Press Once	Power On the fountain.
		Power Off	Press Once	Power Off the fountain.
WiFi Reset Button		Automatically Dispense Water Once	Press Once	Dispense Water Once.
		WiFi connection reset	Press And Hold for 3 seconds	WiFi Connection Reset Button

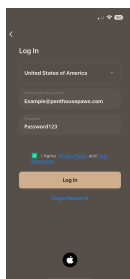
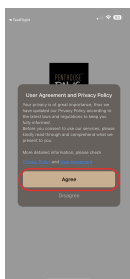
How To Connect App

App Download And Installation

1. Search the App Store or scan the QR code below to download and install Penthouse Paws App.

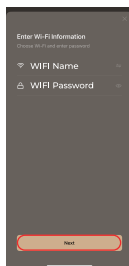
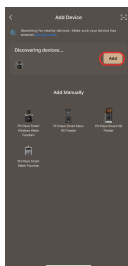


2. Launch the App, register a new account or login to a registered account. When you register, please choose the correct country.

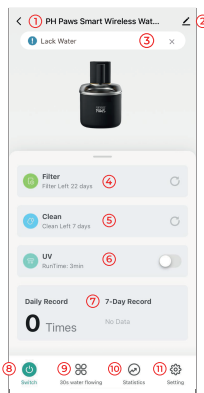


Pet Fountain Configuration

1. Click Add Device or + , after "Discovering Devices"
2. Enter WIFI Password
3. Connecting...
4. Device added successfully



Meet Your Smart Fountain



Main Screen

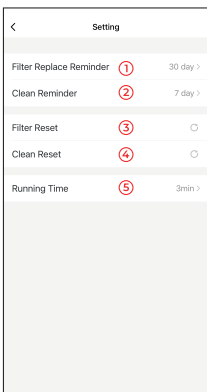
1. Customizable Device Name: Give your fountain a fun nickname!
2. Real-Time Fountain Info: See water level, battery life, and filter status.
3. Low Water & Battery Alerts: Never worry about running out! Get notified when refills are needed.
4. Filter Replacement Reminders: Get notified when it's time to replace the filter for optimal water quality.
5. Cleaning Reminders: Keep your fountain fresh with timely cleaning prompts.

Sterilization Options

6. Ultrafiltration: Enjoy up to 99% bacteria removal during normal operation.

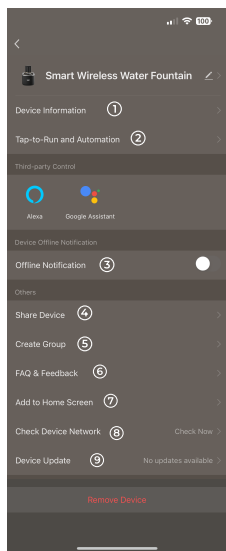
Additional Features

7. Drinking Water History: Track your pet's water consumption.
8. Power On/Off: Easily control your fountain with the tap of a button.
9. Smart & Normal Modes: Choose the mode that suits you.
 - Choose 30-45 Second dispensing times
10. Detailed Statistics: Dive deeper into your pet's drinking habits.
11. Settings: Adjust various preferences



1. Filter Replacement Reminder: Let the app know how often you want to replace the filter (e.g., every month). It will then send you a notification when it's time.
2. Cleaning Reminder: Similar to the filter, set a reminder for how often you want to clean the pump and water tank (e.g., every two weeks). The app will send you a notification when it's cleaning time.
3. Filter reset: Once you've changed the filter, click "Filter reset" to restart the filter replacement reminder timer. This ensures you receive a notification when it's time to change the filter again.
4. Clean reset: Once you have cleaned the water tank, pump, and parts, please click "Clean reset" to restart the cleaning reminder timer. This will ensure you receive a notification when it is time to clean the fountain again.
5. Running Time: You can initiate a special cleaning cycle to eliminate bacteria in the water tank. This cycle uses UV light and runs for 3 minutes (or a different duration you can set).

1. View the device ID, IP address, MAC, zone time, signal.
 2. Tap-to-Run and Automation.
 3. If the device is offline, the APP will send a message after 30 minutes.
 4. It can share to other mobile numbers.
 5. Create Group.
 6. FAQ & Feedback.
 7. Add to Home Screen.
 8. Check Device Network.
 9. Device Update.
 10. Remove device will delete the Wifi information from the device.
- Then use a new account to connect.



How To Disassemble

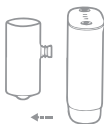
1. Power Down for Safety, Hold the top unit, Pour fresh water directly into the water tank (located in the base) & Once finished, gently lift the top unit off the water tray.



2. Pull off the water line, bead weight and round filter.



3. Pull off the ultrafiltration filter.



4. Press and pull down to remove the foam filter box. Change the foam filter regularly.

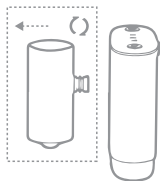


Notes:

Press and pull it down

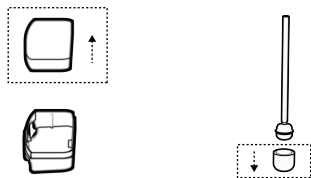
Change The Filter And Foam

1. To avoid blockage inside the filter cartridge, change the ultrafiltration filter at least once a month. When the filter change indicator lights up, change the filter immediately.



2. Filter Replacement Duration

- Cleaning frequency: **Weekly**
- Replacement frequency: **Every two weeks** (bi-weekly)
- Optional **increase in frequency**: For heavy use or warm environments



3. To avoid any potential risks caused by using filters from other brands, please use the ultrafiltration filter and foam filter we provided. **To re-order please visit penthousepaws.com**

Troubleshooting

Problem	Solution
The fountain doesn't dispense water or dispense water slowly with a lot of bubbles.	<ol style="list-style-type: none">1. Please make sure the tank has enough water.2. Then reboot the device to see if it works normally.3. Please reinstall the ultrafiltration filter.
The water tank is dirty . The foam filter is dirty . The interior of the water tank/water tray is sticky .	<p>Clean the device and change the filter regularly.</p> <ol style="list-style-type: none">1. Change the ultrafiltration filter at least once a month.2. Change the foam filter at least once every two weeks.3. Clean the device thoroughly at least once a week.4. If the room temperature is high or if you have more than one pet using the water fountain, please do clean and change more frequently. Refer to the part CLEAN AND CARE for details.
The device won't charge. Battery life is not as expected. The device won't power on.	<ol style="list-style-type: none">1. Don't place the water fountain in areas with high activity to reduce frequent motion detection and power consumption.2. Please use the included power cable and adapter for charging.3. To avoid potential safety hazards, do not disassemble the device.

Clean Other Parts

1. It's recommended to clean the whole device thoroughly once a week.
2. Use the cleaning brush to clean the water tray and the interior of the tank. Dish detergent can be used to help clean, rinse it before use.
3. Don't forget to clean the foam filter and water line.
4. Use the cleaning brush to clean the narrow space, such as water line, water outlet, etc.

Notes:

Do not wash or rinse the main unit. Plastic parts and the main unit cannot be cleaned in a dishwasher.



Specifications

Model	PHP-WF-001
Power Adapter	Input: AC 100-240 50/60Hz Output: 5V Dc
Effective Capacity	3.5L/118oz
Battery Capacity	5200mAh
Battery Type	Li-ion Battery Pack
Dimensions	238x172x151 mm

Battery Pack

The water dispenser has a built-in rechargeable battery, please pay attention to the following items in daily use:

- The built-in battery cannot be disassembled. Please do not disassemble it by yourself to avoid a decline in battery performance or damage to the battery. In serious cases, electrical safety hazards overheating, fire or injury may occur.
- If the product has not been used for a long time, please charge the product at least once every six months to avoid affecting the service life of the battery.
- When low power is prompted, please charge the battery as soon as possible to avoid affecting the service life of the battery.
- Avoid using it at low temperature, otherwise, the battery power will decrease, which is a normal phenomenon.
- Please use the power adapter in the package to charge the water fountain.
- DO NOT expose the battery to any direct heat source, including fire or direct sunlight.
- The battery must be removed from the water fountain before it is scrapped.
- DO NOT dispose of the water fountain or the Battery Pack in fire, water or other liquids. This is to avoid any explosion hazards.
- DO NOT dispose of the Li-ion battery in your household waste. Dispose of it by following your local environmental laws and regulations. **Contact <https://www.epa.gov/hw/lithium-ion-battery-recycling>**
- Do not heat above 140° F [60° C] or incinerate the battery pack. Keep the battery pack away from children.

FCC Statement

This device complies with Part 15 of the FCC Rules.

Operation is subject to the following two conditions:

- (1) this device may not cause harmful interference and
- (2) this device must accept any interference received, including interference that may cause undesired operation.

Changes or modifications to this unit not expressly approved by the party responsible for compliance could void the user's authority to operate the equipment.

Note:

This equipment has been tested and found to comply with the limits for a Class B digital device, pursuant to Part 15 of the FCC Rules. These limits are designed to provide reasonable protection against harmful interference in a residential installation. This equipment generates, uses and can radiate radio frequency energy and, if not installed and used in accordance with the instructions, may cause harmful interference to radio communications. However, there is no guarantee that interference will not occur in a particular installation. If this equipment does cause harmful interference to radio or television reception, which can be determined by turning the equipment off and on.

Warranty

- 12 month warranty
- Life-time support

Please contact help@penthousepaws.com for warranty issues or questions.