

1

Please check whether the accessories are complete



1 2 3 4 5 6 7



2

Place the chair legs crossed



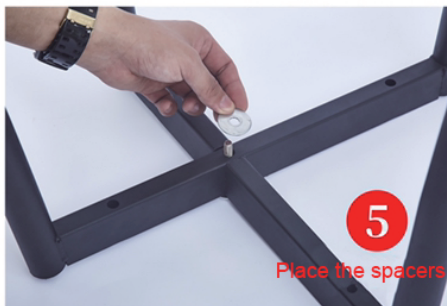
3

Put the screws through the spacer



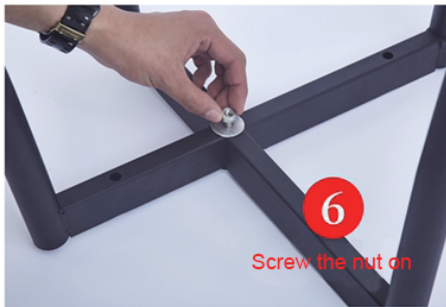
4

Put the screws through the shelf



5

Place the spacers



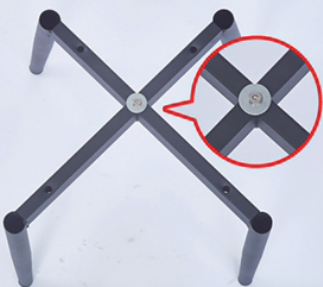
6

Screw the nut on



7

Tighten with tools



8

(Screw cap facing up, nut facing down, do not install the reverse) Chair legs after installation is complete, please try the four legs on the ground Flat or not, if not flat, please contact customer service



9

Align the chair legs with the four holes on the seat surface



10

Fix a screw (do not tighten)



11

Fixed four screws (do not tighten) all aligned, screwed in a little



12

Use the tool to tighten all four screws



13

Installation is complete