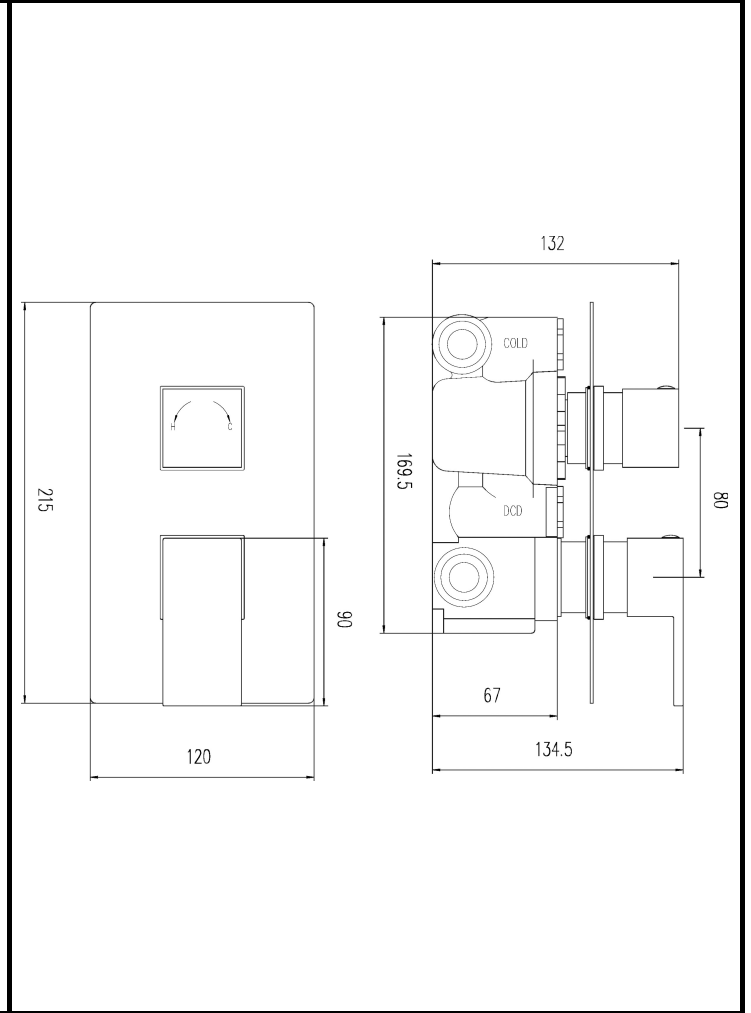


CUSTOMER DATA SHEET - SHOWERS

DESCRIPTION: Art Twin Valve W/Built In Div Rec Plate



PRODUCT DIMENSIONS				
Length(mm)	Width (mm)	Height (mm)	Depth (mm)	Nett Wgt Kg
	120	215	135	2.59

PACKAGING DIMENSIONS				
Length (mm)	Width (mm)	Depth (mm)	Gross Wgt Kg	
250	240	130	3.12	

PACKAGING DATA			
Box Colour	White Cardboard Box		
Box Qty	1	Label Colour	White Label
Label Size	100 x 50	Label Qty	2

OUTER BOX DIMENSIONS (If Applicable)				
Length (mm)	Width (mm)	Height (mm)	Depth (mm)	Gross Wgt Kg
				19

PRODUCT DETAILS	
Country of Origin	United Kingdom
Fitting Instruction	Yes
Product Material	Brass/ABS
Mount Type	Wall, Recessed
Outlet Elbow Supplied	No
Easy Clean	Not Applicable
Head Included	No
Handset Included	No
Body Jets Included	No
No of Body Jets	Not Applicable
Operating Pressure (bar)	0.5
Valve/Cartridge Type	1/4 Turn Ceramic Disc

Flow Rates (L/min)	0.1 bar	N/A	0.5 bar	13	1 bar	17	2 bar	24	3 bar	27
TMV2 Approved	No		Approval No.	N/A						
TMV3 Approved	No		Approval No.	N/A						
WRAS Approved	No		Approval No.	N/A						
Head Function	Not Applicable									
Handset Function	Not Applicable									
Body Jet Info	Not Applicable									
Pipe Size	15 mm & 22 mm									
Pipe Centres	N/A									
Colour/Finish	Chrome									
Hose Included	Not Applicable									