

RVB6750

FREESTANDING BATH TUB

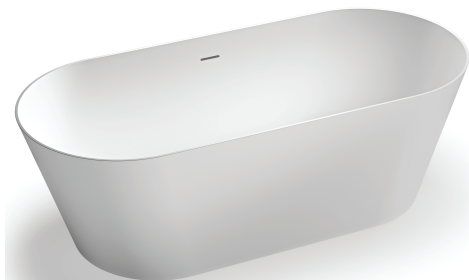
RUVATI[®]
SPECIFICATION SHEET

MATERIAL

- **EPISTONE:** High-quality innovative composite material that produces a hard surface and requires little maintenance.

FEATURES

- **SATIN MATTE POWDER FINISH:** Natural beauty similar to stone and silky to the touch.
- **OVAL SHAPE:** For maximum comfort and easy cleaning.



COLOR OPTIONS

WH: White

BK: Black

IN THE BOX



Popup Drain
[RVA6104WH/BK]

NOMINAL DIMENSIONS

Exterior: 67" x 30-1/4" x 21-5/8"

Interior: 66" x 28-1/2" x 19-5/8"

Drain Hole Size: 2-1/4"

Installation Type:

Freestanding

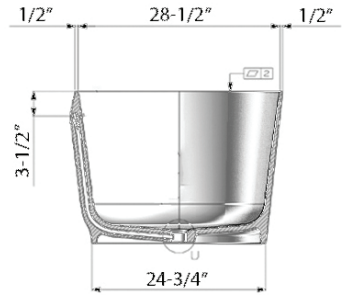
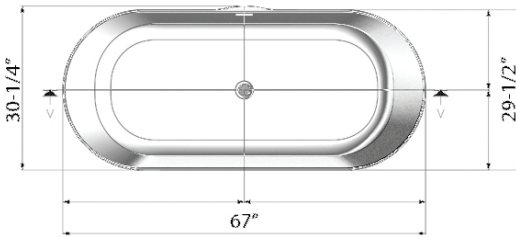
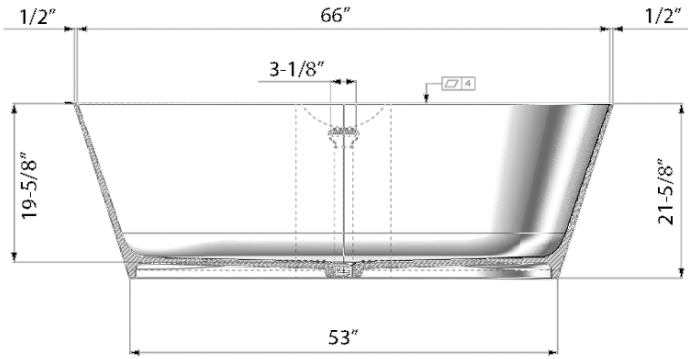
Drain Location:

Center

RUVATI USA
www.ruvati.com

Phone: 1.855.478.8284
Email: support@ruvati.com

DIMENSIONS



SCAN TO REGISTER YOUR WARRANTY

or visit
www.ruvati.com/register

RUVATI USA
www.ruvati.com

Phone: 1.855.478.8284
Email: support@ruvati.com