

Motif II™ rediscovers the ebb and flow of decorative patterns found in visual art. A delicate lace overlay defines this glazed ceramic subway tile collection. With a selection of neutrals, the collection's understated texture and glossy finish combine to create a unique aesthetic.

# MOTIF II™

*Glazed Ceramic*

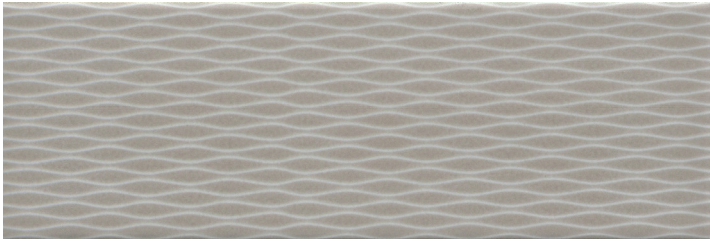




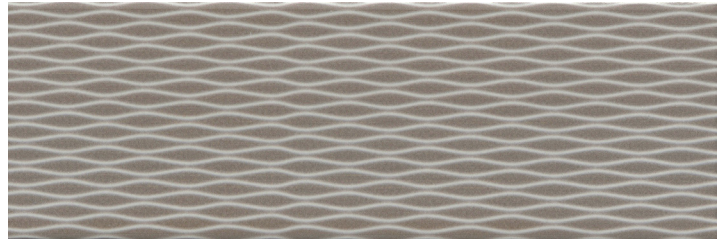
White



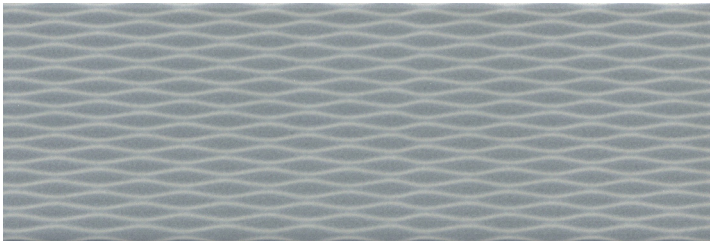
Bone



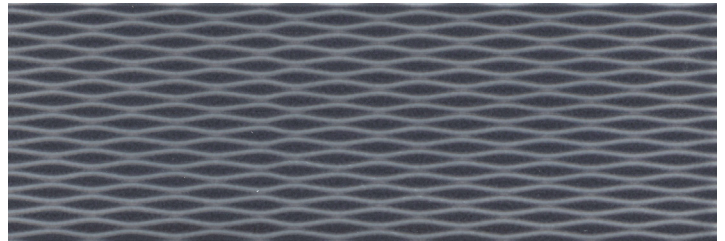
Taupe



Mocha

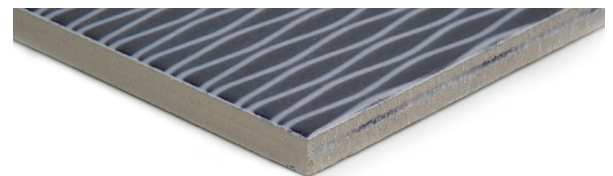


Sky



Charcoal

|                            |                            |                             |                          |                          |                           |
|----------------------------|----------------------------|-----------------------------|--------------------------|--------------------------|---------------------------|
| Sizes                      |                            |                             |                          |                          |                           |
|                            | 4" x 12"<br>3.82" x 11.69" |                             |                          |                          |                           |
|                            | Thickness                  |                             |                          |                          |                           |
| Thickness                  | 9mm                        |                             |                          |                          |                           |
| Grout Joint Recommendation | 3/16"                      |                             |                          |                          |                           |
| Testing                    | Breaking Strength<br>C648  | Chemical Resistance<br>C650 | Water Absorption<br>C373 | Scratch Hardness<br>MOHS | Shade Variation<br>Rating |
| Results*                   | IV                         | Resistant                   | <10%                     | 4                        | V2                        |



- Sustainability Attributes**
- Health Product Declaration (HPD) provided upon request
  - Product Packaging is 100% recyclable
  - VOC Free

\*For more information visit [www.emser.com](http://www.emser.com). Always consult a professional for proper usage and installation.