

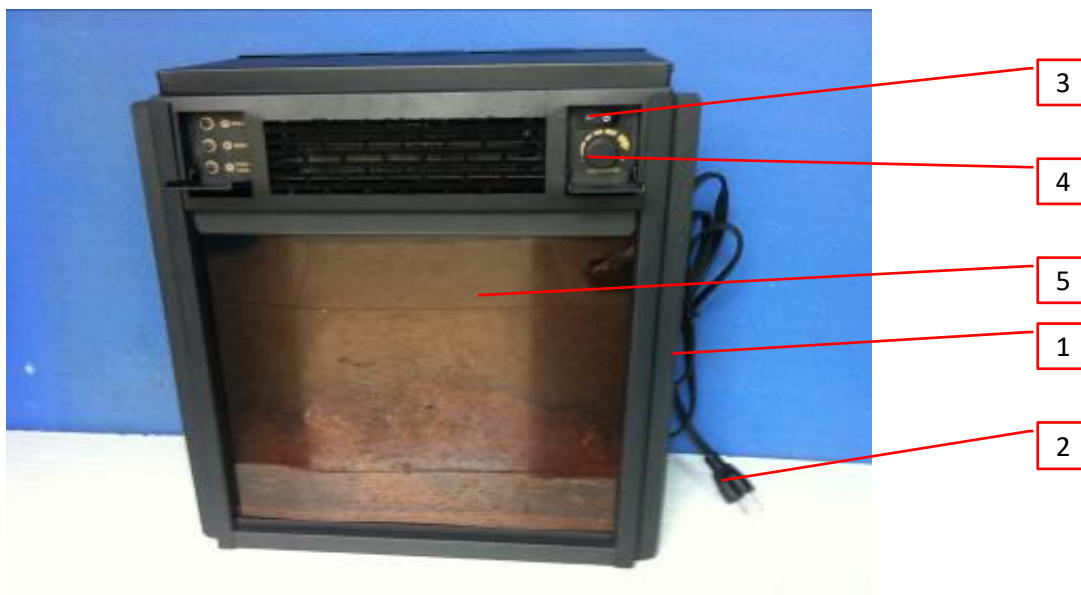
1.0 Reference and Address			
Report Number	190402458SHA-001	Original Issued: 23-May-2019	Revised: 9-May-2023
Standard(s)	Fixed And Location-Dedicated Electric Room Heaters [UL 2021:2015 Ed.4+R:14Dec2016] Electric Air-Heaters (R2018) [CSA C22.2#46:2013 Ed.9]		
Entirely Replaces Report Number	GZ11100246-1, 180100414HZH-001		
Applicant	NINGBO GENGMEI ELECTRIC APPLIANCE TECH CO., LTD.	Manufacturer	NINGBO GENGMEI ELECTRIC APPLIANCE TECH CO., LTD.
Address	Guangxi Industrial Estate, Yinjiang Town, Haishu District, Ningbo	Address	Guangxi Industrial Estate, Yinjiang Town, Haishu District, Ningbo
Country	China	Country	China
Contact	Mr. Yuan Jun Jiang	Contact	Mr. Yuan Jun Jiang
Phone	86-574-88030010	Phone	86-574-88030010
FAX	86-574-88030010	FAX	86-574-88030010
Email	<a href="mailto:jmartin1621@163.com">jmartin1621@163.com</a>	Email	<a href="mailto:jmartin1621@163.com">jmartin1621@163.com</a>

2.0 Product Description	
Product	Electric Fireplace
Brand name	NA
Description	The products covered by this report are household and indoor use electric fireplace, provided with permanently attached flexible power supply cord which is terminated in a grounding plug. The products can be embedded mounted or fixed to wall by screws.
Models	EF-11A, EF-11B, EF-11C, EF-11D, EF-12A, EF-12B, EF-12C, EF-12D, EF-14A, EF-14B, EF-15A, EF-15B, EF-15C, EF-15D, EF-30A, EF-30B, EF-30C, EF-30D, EF-30BF, EF-36, EF-48, EF-30BFGPLED, WF-1336, WF-1340, WF-1350, WF-1360, WF1436, WF-1370, WF-1395, WF-48S, WF-36S, WF-32S, WF-40S, WF-26SGPLED, WF-36SGPLED, WF-36SLGLED, 86271, 86272, 80001, 80002, 80008, 80026, WF-48SLGGPLED WF-40SGPLED, WF-48SGPLED, ZCR 3824, ZCR 3830, ZCR 3840, IF-36FSB, IF-40FSB, IF-50FSB, IF-60FSB, IF-70FSB, IF-1336TCL, IF-1340TCL, IF-1350TCL, IF-1360TCL, IF-1370TCL, EF-18, EF-23, EF-26, EF-28, EF-34, IF-1330TCL, IF-1380TCL, IF-1390TCL, IF-13100TCL, IF-1370, IF-1380, IF-1390, IF-13100, IF-1336, IF-1340, IF-1350, IF-1360, 86273, WLGN8740, 80004, 86274, 80047, 80048, 80013, 80019, IF-36, IF-40, IF-42, IF-50, IF-60, IF-70, IF-72, IF-74, IF-80, IF-90, IF-100

2.0 Product Description	
Model Similarity	<p>Group 1: EF-11A, EF-11B, EF-11C, EF-11D, EF-12A, EF-12B, EF-12C, EF-12D, EF-14A, EF-14B, EF-15A, EF-15B, EF-15C, EF-15D, EF-30A, EF-30B, EF-30C, EF-30D, EF-30BF, EF-36, EF-48, EF-30BFGPLED, WF-1336, WF-1340, WF-1350, WF-1360, WF1436, WF-1370, WF-1395, WF-48S, WF-36S, WF-32S, WF-40S, WF-26SGPLED, WF-36SGPLED, WF-36SLGLED, WF-40SGPLED, WF-48SGPLED, ZCR 3824, ZCR 3830, ZCR 3840, 86271, 86272, 80001, 80002, 80008, 80026, WF-48SLGGPLED</p> <p>All the models have the same electric components, electric circuit, and most constructions. Difference between them are size, shape, the air outlet, and so on.</p> <p>Models with -12 are identical except the model number;</p> <p>Models with -15 are identical except the model number;</p> <p>Models with -11, -12 and -15 employ with front glass panel;</p> <p>Model EF-30A, EF-30B, EF-30BF are similar to each other except the appearance and different body size.</p> <p>Model WF1436 is same as EF-30B except appearance shape, the air inlet and method of installation. Installation method of WF1436 is wall-mounted and installation method of EF-30B is recessed.</p> <p>ZCR 3824, ZCR 3830, ZCR 3840, WF-1336, WF-1340, WF-1350, WF-1360, WF-1370, WF-1395 are similar to above models except the different body size and PCB location.</p> <p>Adjustable thermostat is only available on EF-30D, ZCR 3824, ZCR 3830 and ZCR 3840.</p> <p>EF-48 and EF-36 are similar to WF1436, but the air outlet grille locate on the bottom of the appliance.</p> <p>Model WF-48S, WF-40S, WF-36S, WF-32S are similar to each other, except the appearance and different body size.</p> <p>Model EF-14A, EF-14B are similar to each other, except the appearance and different body size.</p> <p>EF-30BF is same as EF-30BFGPLED except for model number, so as WF-36S with WF-36SGPLED, WF-36SLGLED and WF-26SGPLED, WF-40S with WF-40SGPLED, WF-48S with WF-48SGPLED.</p> <p>Models 86271, 86272, 80001, 80002, 80008, 80026 are identical with model WF-1350, except the model name.</p> <p>Model WF-48SLGGPLED is identical with model WF-48S, except the model name.</p>
	<p>Group 2: IF-36FSB, IF-40FSB, IF-50FSB, IF-60FSB, IF-70FSB, IF-1336TCL, IF-1340TCL, IF-1350TCL, IF-1360TCL, IF-1370TCL, IF-1380TCL, IF-1390TCL, IF-13100TCL, IF-1370, IF-1380, IF-1390, IF-13100, IF-1336, IF-1340, IF-1350, IF-1360, 86273, WLGN8740, 80004, 86274, 80047, 80048, 80013, 80019, IF-36, IF-40, IF-42, IF-50, IF-60, IF-70, IF-72, IF-74, IF-80, IF-90, IF-100</p> <p>All models have similar constructions and use the same wiring diagram except the appearance and size.</p> <p>IF-36FSB is same as IF-1336TCL except the model number, so as IF-40FSB with IF-1340TCL, IF-50FSB with IF-1350TCL, IF-60FSB with IF-1360TCL, IF-70FSB with IF-1370TCL.</p> <p>Two kinds of main PCB were used on all models.</p> <p>Models EF-18, EF-23, EF-26, EF-28 and EF-34 are totally identical with model EF-30B except for different model name;</p> <p>Model IF-1330TCL is totally identical with IF-1336TCL except for different model name.</p> <p>IF-1380TCL, IF-1390TCL, IF-13100TCL, IF-1370, IF-1380, IF-1390, IF-13100 are identical with model IF-1370TCL, except the model name.</p> <p>IF-1336, IF-1340, IF-1350, IF-1360 are respectively identical with model IF-1336TCL, IF-1340TCL, IF-1350TCL, IF-1360TCL, except the model name.</p> <p>Models 86273, WLGN8740, 80004 are identical with model IF-1350TCL, except the model name.</p> <p>Model 86274 is identical with model IF-1360TCL, except the model name.</p> <p>Model 80047 is identical with model IF-60FSB, except the model name.</p> <p>Model 80048 is identical with model IF-40FSB, except the model name.</p> <p>Model 80013 is identical with model IF-50FSB, except the model name.</p> <p>Model 80019 is identical with model IF-1370TCL, except the model name.</p> <p>Model IF-36, IF-40, IF-42, IF-50, IF-60, IF-70, IF-72, IF-74, IF-80, IF-90, IF-100 are identical with model IF-50FSB, except the model name.</p>
Ratings	120V, 60Hz, 1500W
Other Ratings	NA

### 3.0 Product Photographs

**Photo 1-** Front View for EF-30D



**Photo 2-** Rear View for EF-30D



### 3.0 Product Photographs

**Photo 3-** Bottom View for EF-30D

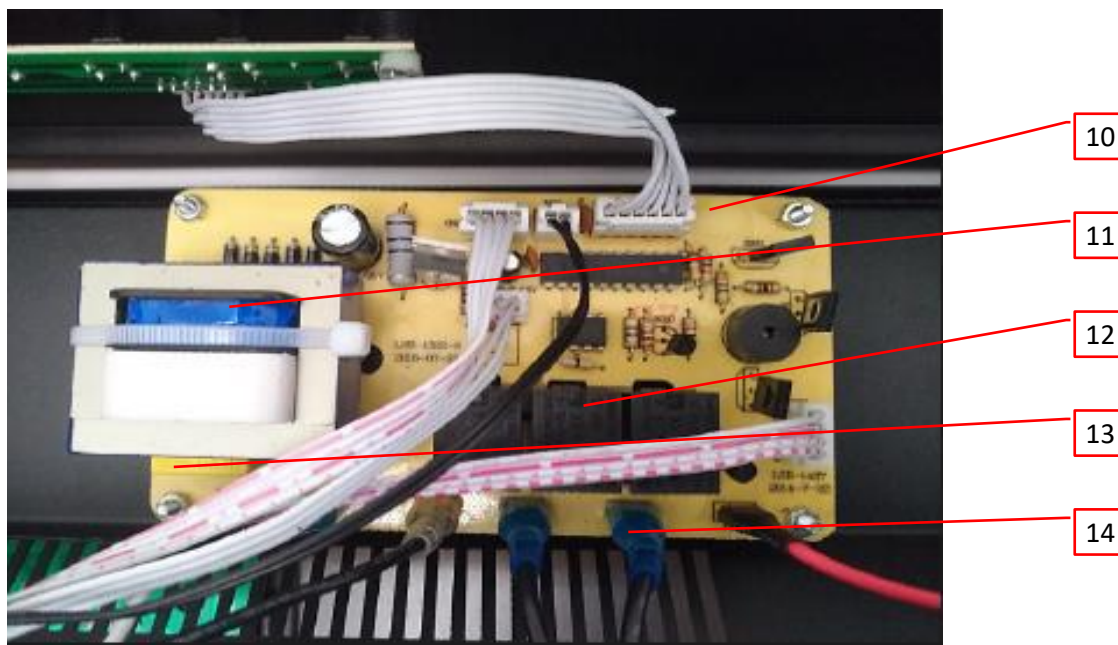


**Photo 4-** Internal View for EF-30D



### 3.0 Product Photographs

**Photo 5-** A Main PCB View for all models



**Photo 6-** Front View for EF-11C and EF-11D (without glass panel)





### 3.0 Product Photographs

**Photo 7-** Rear View for EF-11C and EF-11D



**Photo 8-** Internal View for EF-11C and EF-11D



### 3.0 Product Photographs

**Photo 9-** Front View for EF-11A and EF-11B



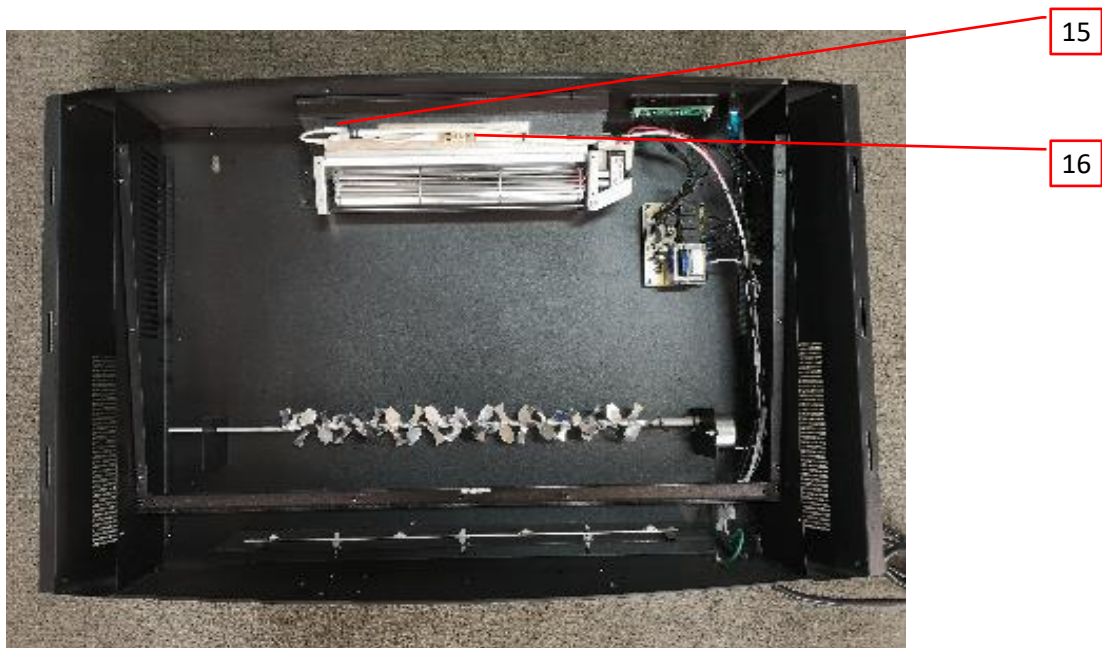
**Photo 10-** Rear View for EF-11A and EF-11B





### 3.0 Product Photographs

**Photo 11-** Internal View for EF-11A and EF-11B



**Photo 12-** Front View for EF-12A



### 3.0 Product Photographs

**Photo 13-** Rear View for EF-12A



**Photo 14-** Internal View for EF-12A

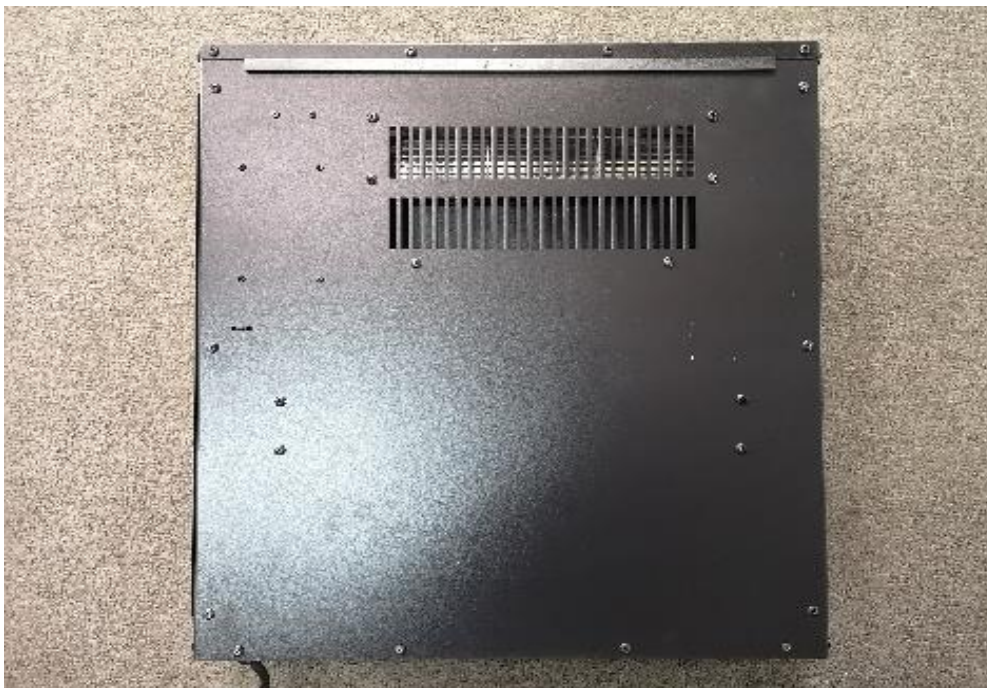


### 3.0 Product Photographs

**Photo 15-** Front View for EF-15A



**Photo 16-** Rear View for EF-15A



### 3.0 Product Photographs

**Photo 17-** Internal View for EF-15A



**Photo 18-** Front View for EF-30A





### 3.0 Product Photographs

**Photo 19-** Rear View for EF-30A



**Photo 20-** Internal View for EF-30A





### 3.0 Product Photographs

**Photo 21-** Front View for EF-30C

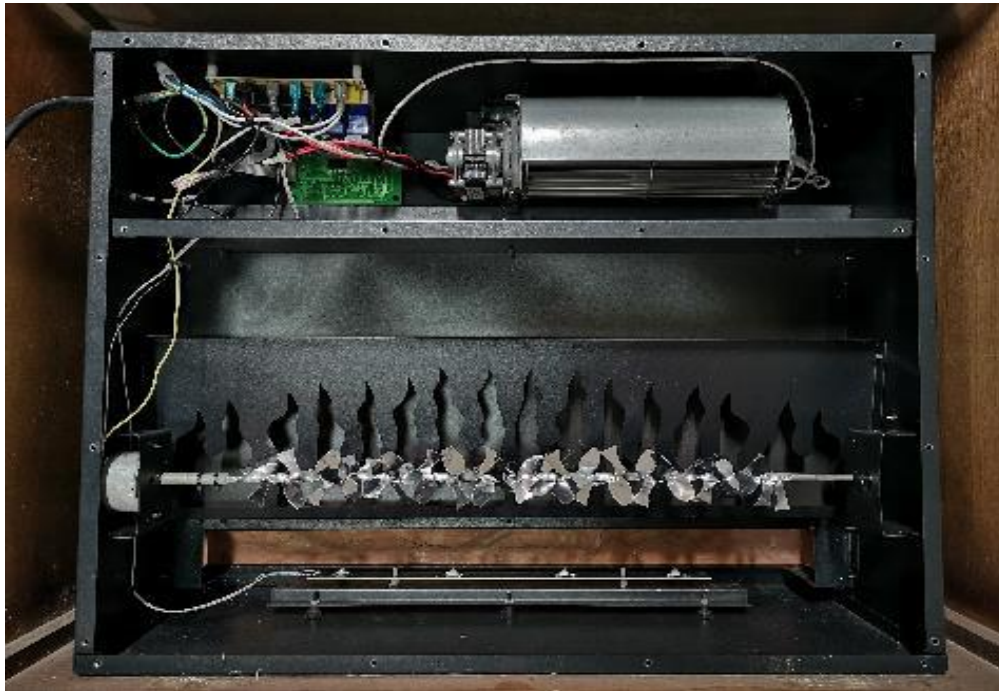


**Photo 22-** Rear View for EF-30C



### 3.0 Product Photographs

**Photo 23-** Internal View for EF-30C



**Photo 24-** Front View for WF1436

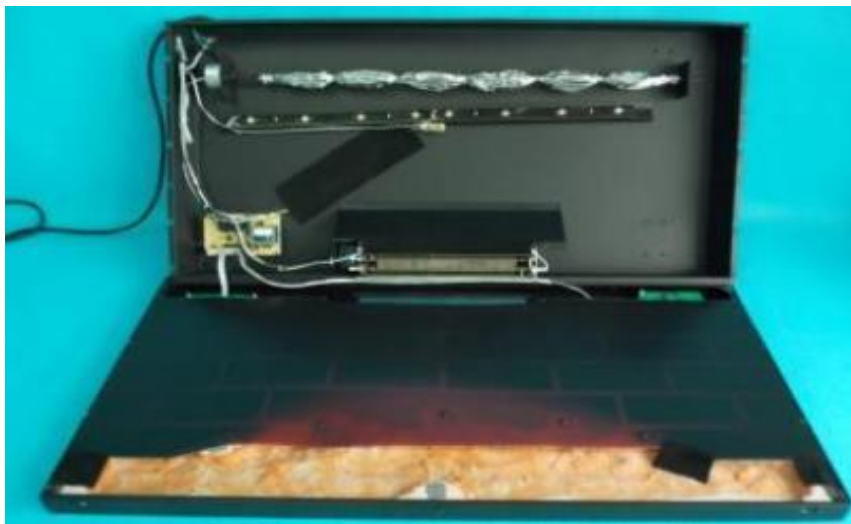


### 3.0 Product Photographs

**Photo 25-** Rear View for WF1436



**Photo 26-** Internal View for WF1436



### 3.0 Product Photographs

**Photo 27-** Internal View for WF1436



**Photo 28-** Front View for ZCR 3830 (glass cover removed)



### 3.0 Product Photographs

**Photo 29-** Rear View for ZCR 3830 (glass cover removed)



**Photo 30-** Internal View for ZCR 3830



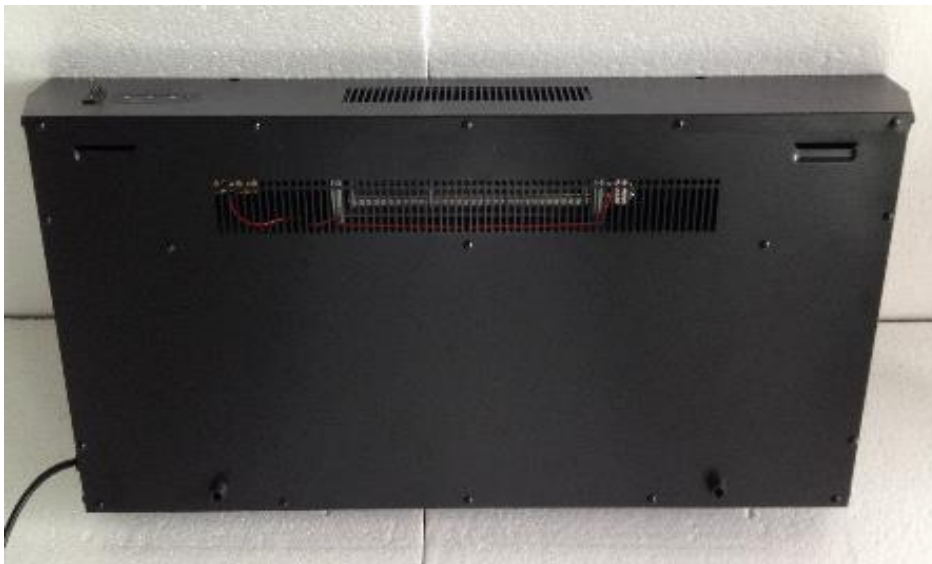


### 3.0 Product Photographs

**Photo 31-** Front View for WF-1340 (Glass cover removed)



**Photo 32-** Rear View for WF-1340



### 3.0 Product Photographs

**Photo 33-** Internal View for WF-1340



**Photo 34-** Front View for EF-48 (Glass cover removed)



### 3.0 Product Photographs

**Photo 35-** Rear View for EF-48



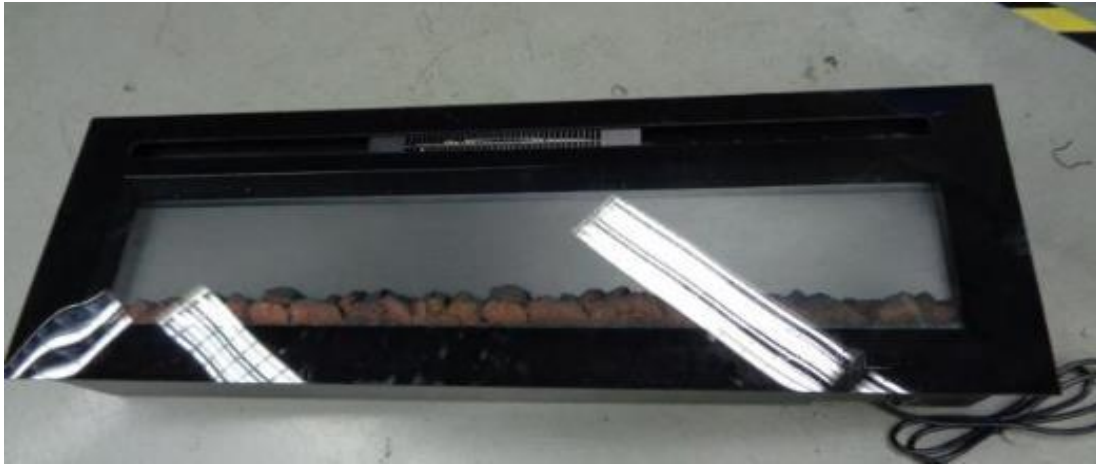
**Photo 36-** Internal View for EF-48



17

### 3.0 Product Photographs

**Photo 37-** Front View for WF-48S



**Photo 38-** Front View for WF-48S (Glass cover removed)

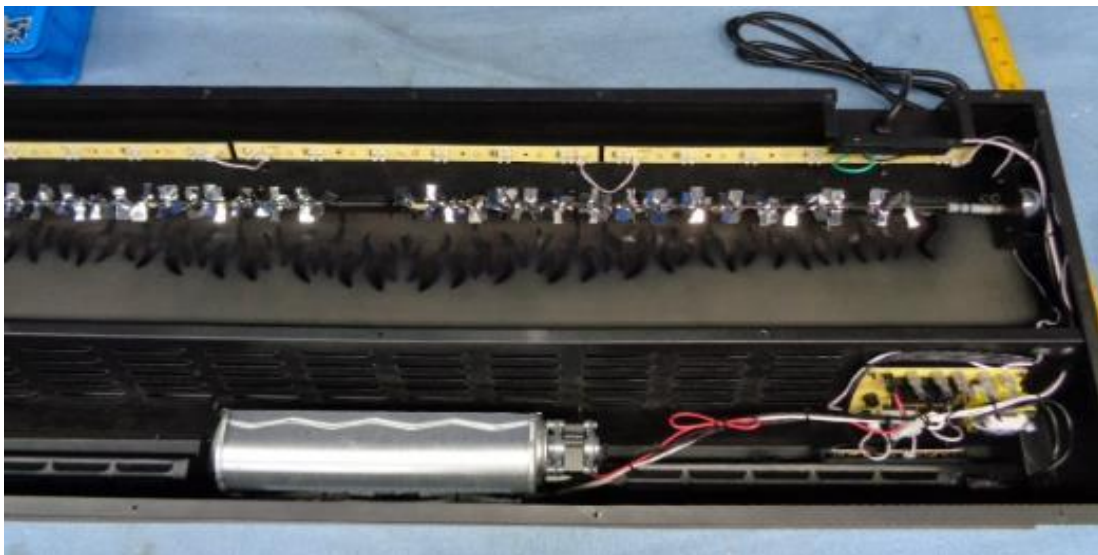


### 3.0 Product Photographs

**Photo 39-** Rear View for WF-48S



**Photo 40-** Internal View for WF-48S





### 3.0 Product Photographs

**Photo 41-** Front View for EF-14A



**Photo 42-** Rear View for EF-14A

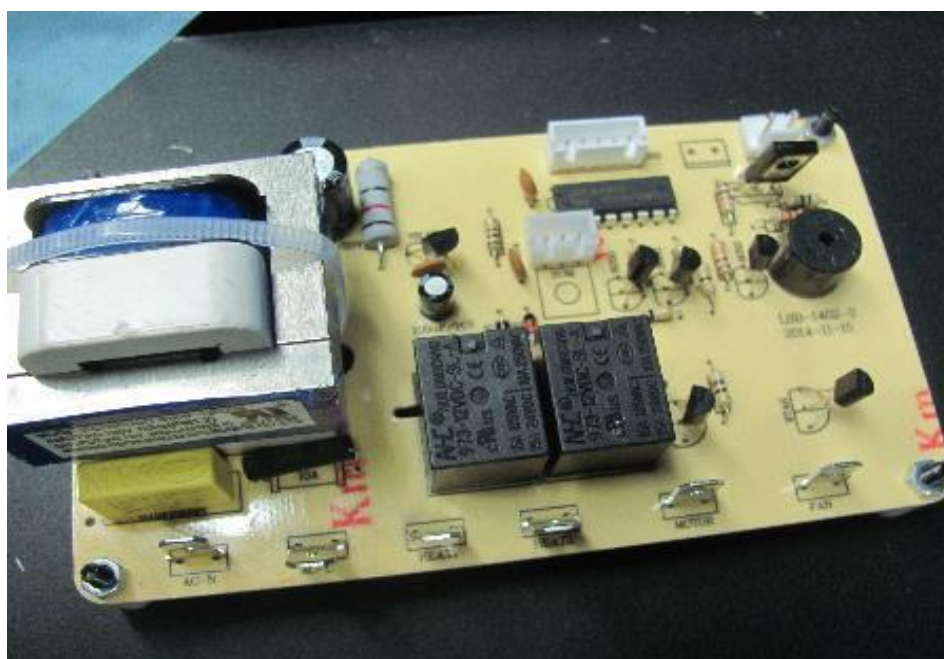


### 3.0 Product Photographs

**Photo 43-** Internal View for EF-14A

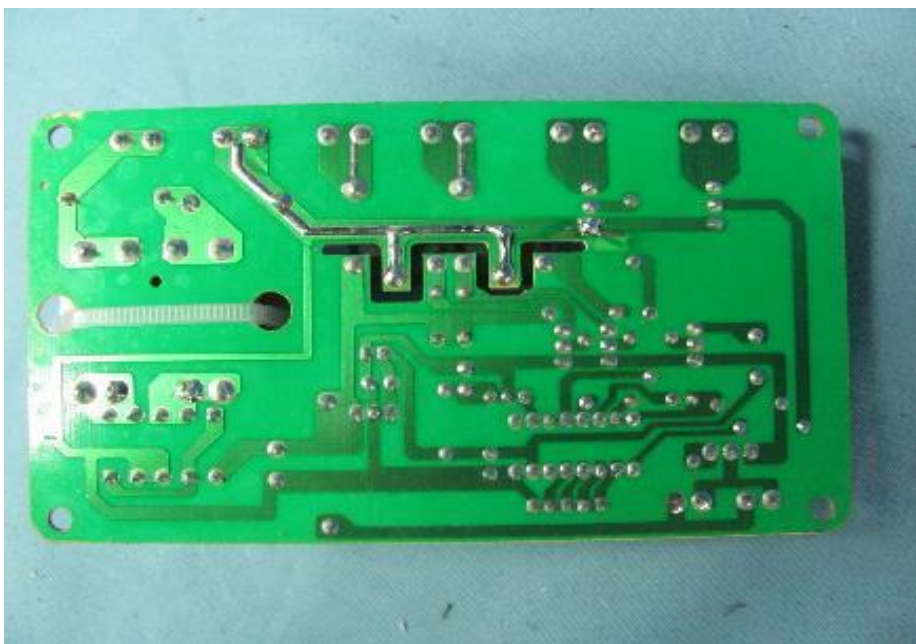


**Photo 44-** Alternative A main PCB View for all models

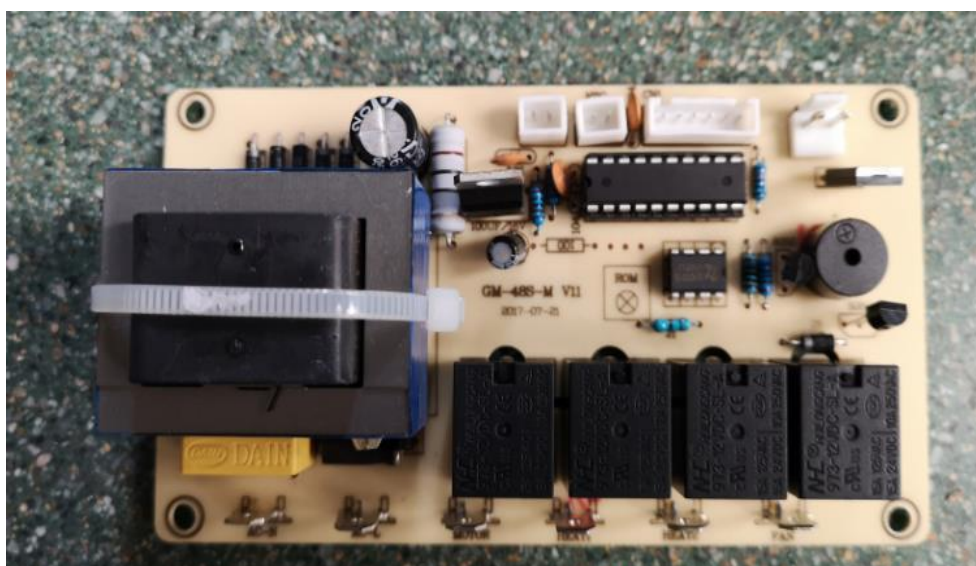


### 3.0 Product Photographs

**Photo 45-** Alternative A main PCB View for all models

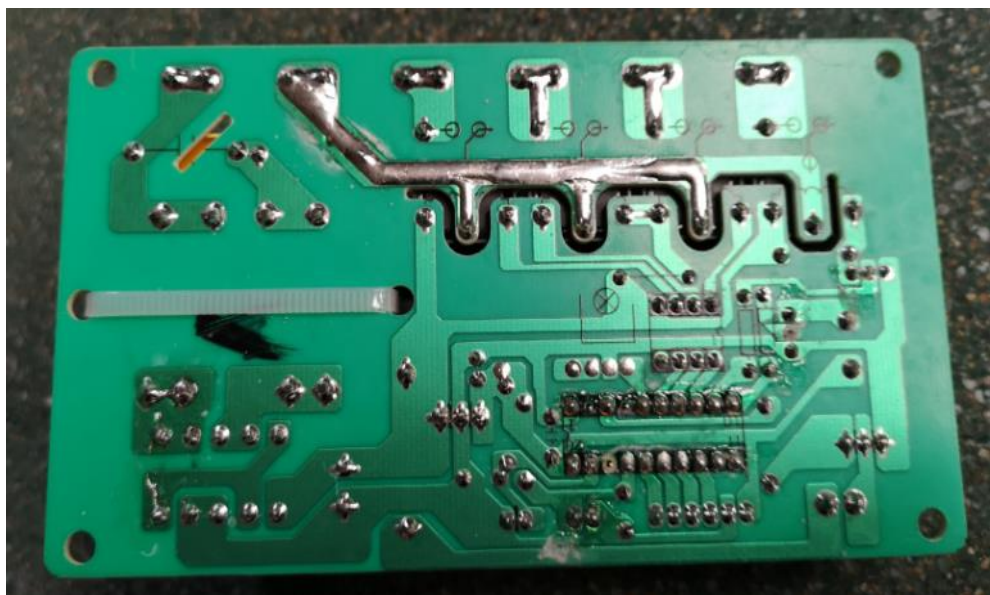


**Photo 46-** Alternative A main PCB View for all models



### 3.0 Product Photographs

**Photo 47-** Alternative A main PCB View for all models



**Photo 48-** Front View for IF-70FSB





### 3.0 Product Photographs

**Photo 49-** Rear View for IF-70FSB



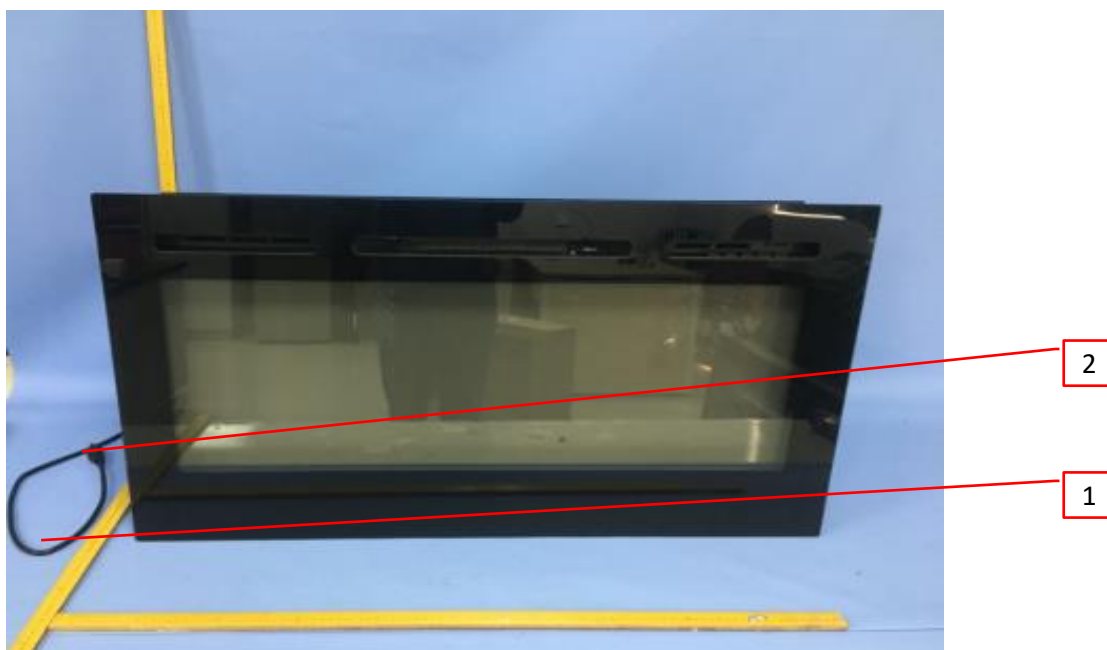
**Photo 50-** Front View for IF-36FSB



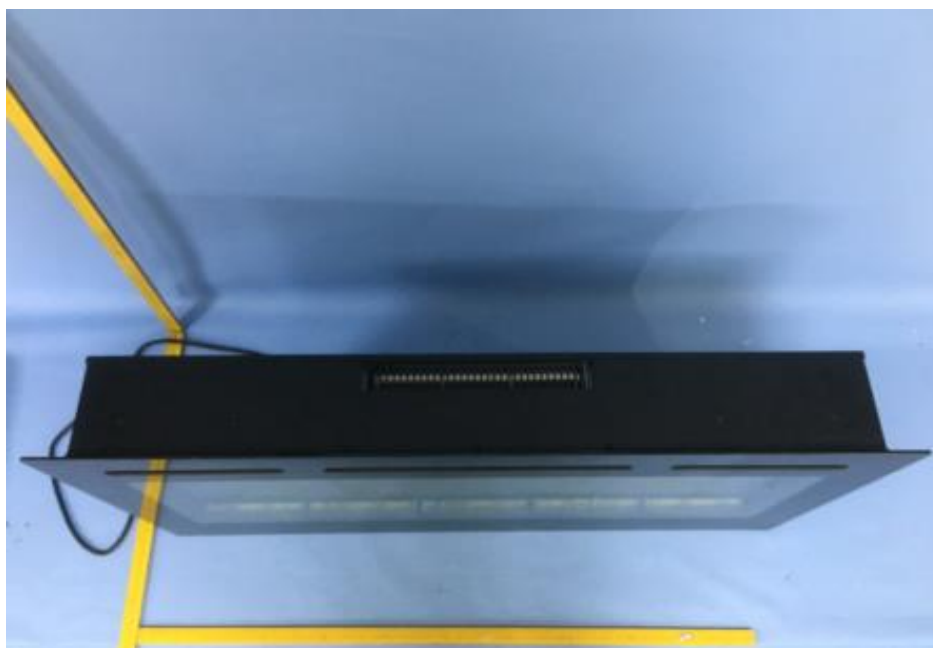


### 3.0 Product Photographs

**Photo 51-** Front View for IF-40FSB

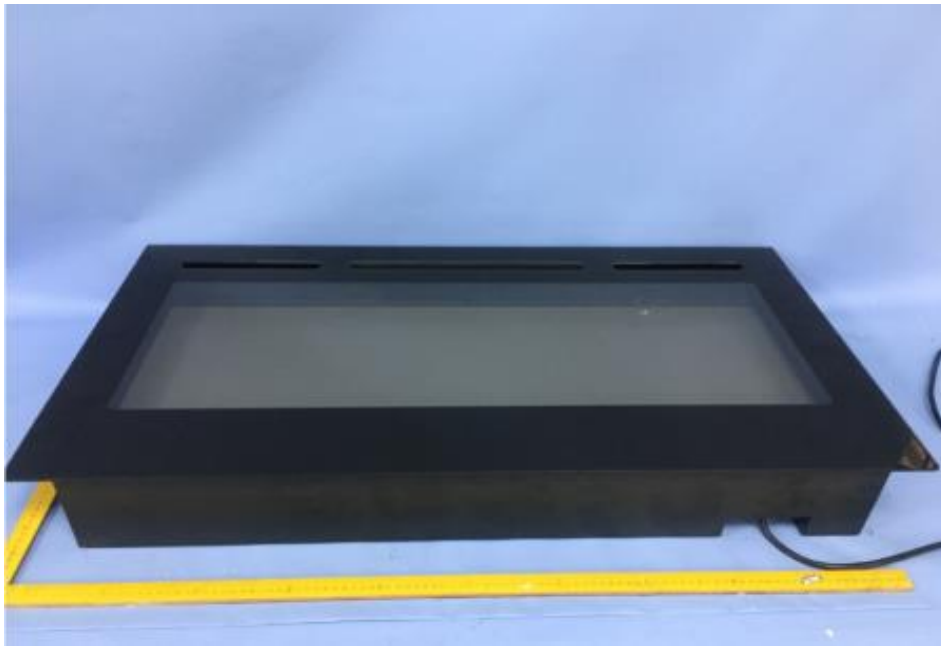


**Photo 52-** Top View for IF-40FSB

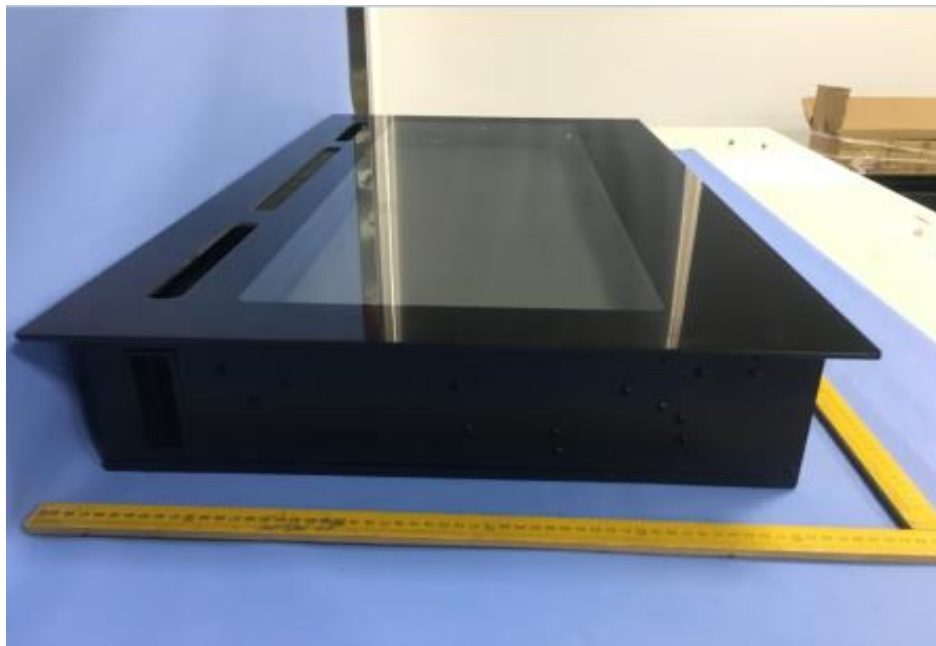


### 3.0 Product Photographs

**Photo 53-** Bottom View for IF-40FSB



**Photo 54-** Side View for IF-40FSB



### 3.0 Product Photographs

**Photo 55-** Rear View for IF-40FSB



**Photo 56-** Internal View for group 2 models (except the appearance and size)



18

### 3.0 Product Photographs

**Photo 57-** Internal View for group 2 models (except the appearance and size)

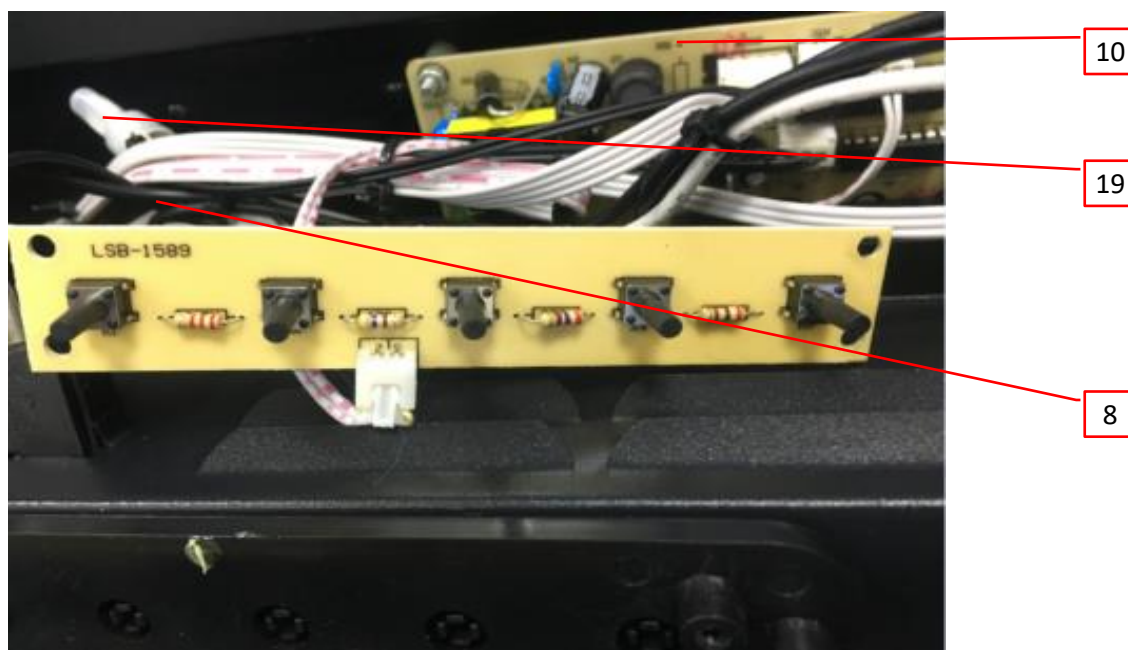


**Photo 58-** Internal View for all group 2 models

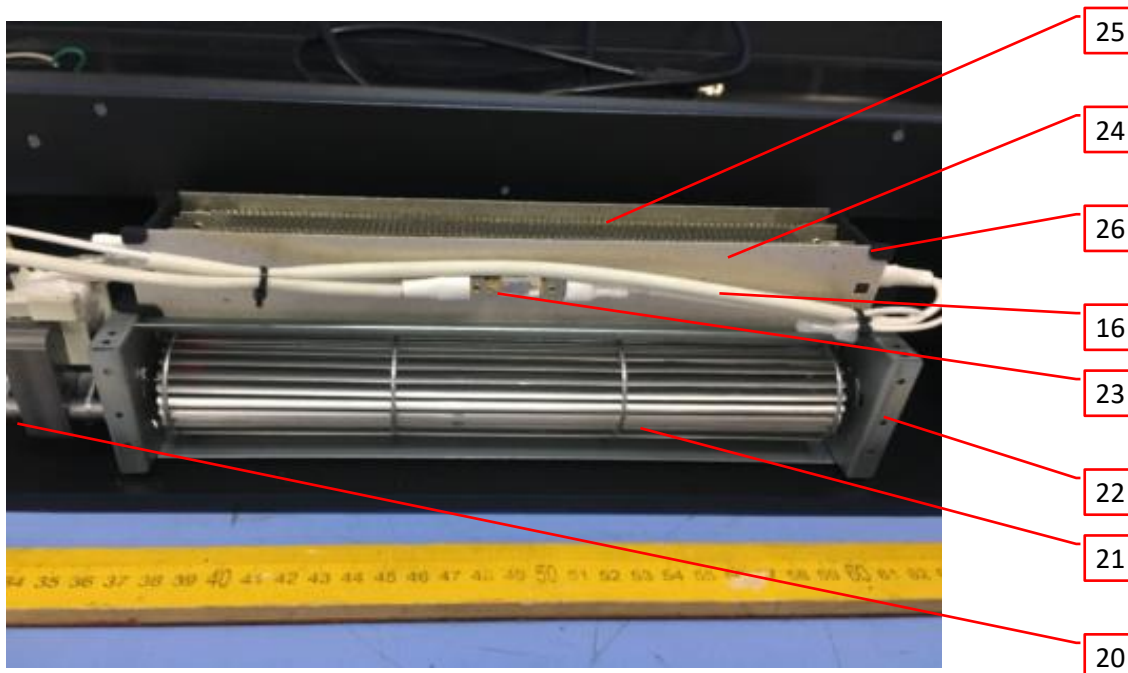


### 3.0 Product Photographs

**Photo 59-** Control panel PCB View for group 2 models



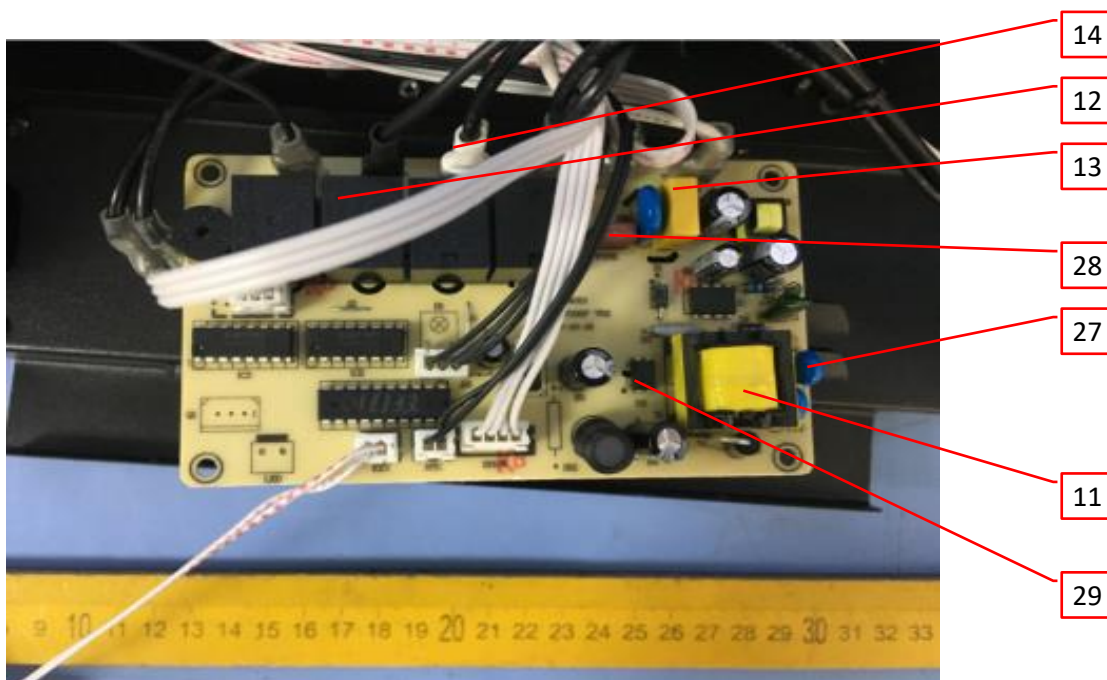
**Photo 60-** Heating element and fan motor View for all models



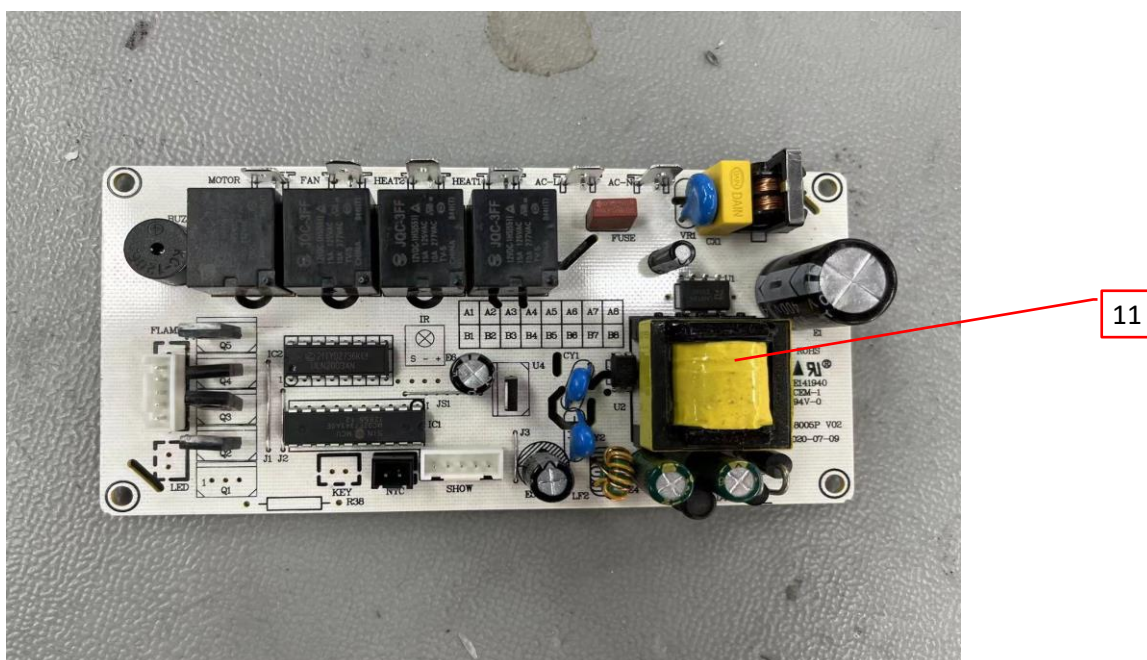


### 3.0 Product Photographs

**Photo 61-** B Main PCB View for all models

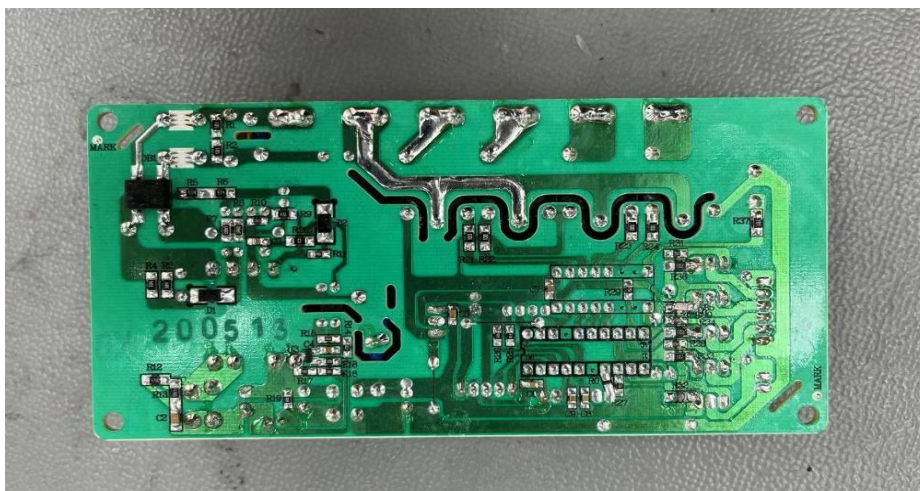


**Photo 61a-** Alternative B Main PCB View for all models

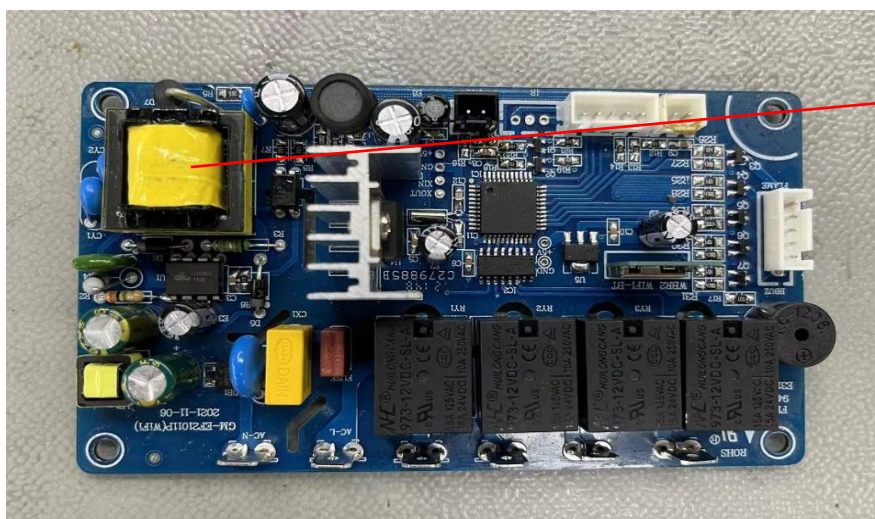


### 3.0 Product Photographs

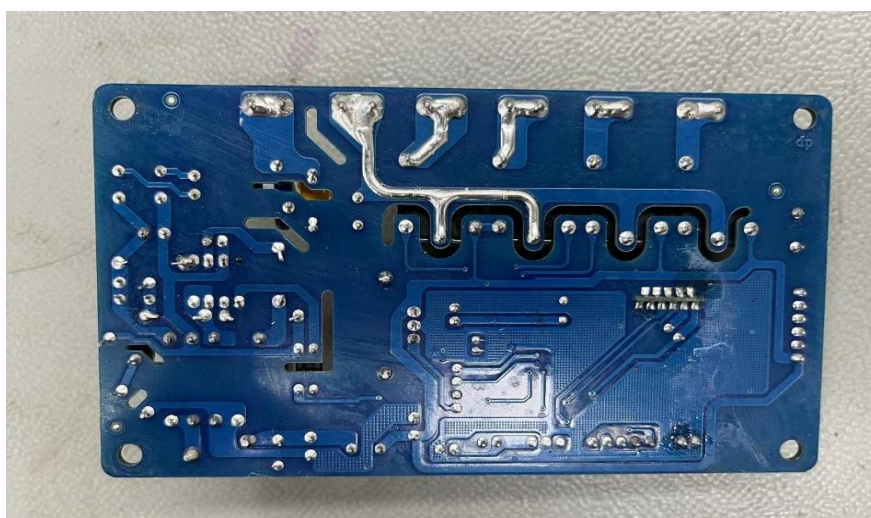
**Photo 61b-** Alternative B Main PCB View for all models



**Photo 61c-** B Main PCB (with WIFI module function) View for all models



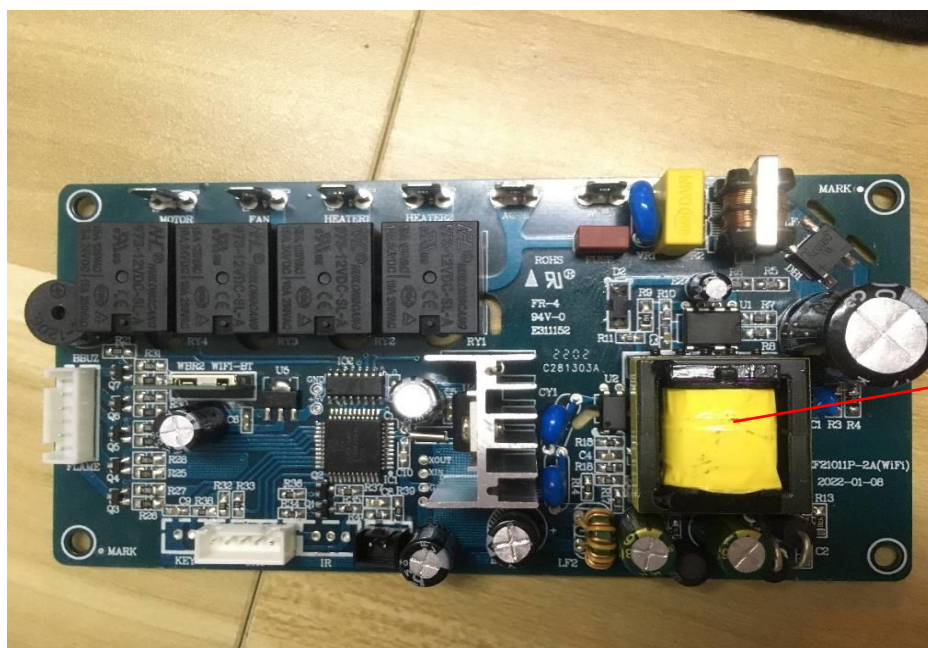
11





### 3.0 Product Photographs

**Photo 61d-** Alternative B Main PCB (with WIFI module function) View for all models



**Photo 62-** Internal View for group 2 models (except the appearance and size)

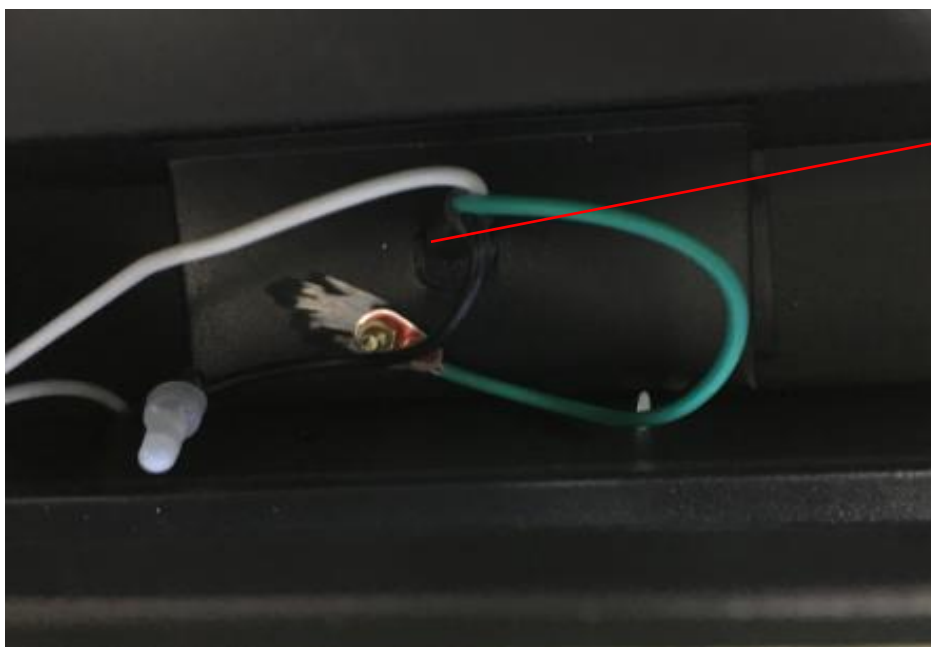


### 3.0 Product Photographs

**Photo 63-** Synchronous motor View for all models



**Photo 64-** Earthing terminal View for all models



4.0 Critical Components						
Photo #	Item no. <sup>1</sup>	Name	Manufacturer/ trademark <sup>2</sup>	Type / model <sup>2</sup>	Technical data and securement means	Mark(s) of conformity <sup>3</sup>
1, 51	1	Supply cord	Various	HPN	16AWGx3C, 105°C, 300 V, VW-1. Length in range of 1.8-2.4 m, terminated in a 3-wire grounding type attachment plug. For all models.	UL or cETLus
			Various	SJT	16AWGx3C, 105°C, 300 V, VW-1. Length in range of 1.8-2.4 m, terminated in a 3-wire grounding type attachment plug. For all models.	UL or cETLus
1, 51	2	Plug	Various	Various	NEMA Config. 5-15P. For all models.	UL or cETLus
1	3	Switch	NINGBO MASTER SOKEN ELECTRICAL CO LTD	RK1-11	Rated 125VAC, 16A, 85°C, 6K cycles. Secured to Enclosure by integrally tabs. For all models.	cURus
				RK1-15	Rated 125VAC, 16A, 85°C, 6K cycles. For all models.	cURus
			GUANGZHOU TAIHENG ELECTRIC APPLIANCE CO LTD (E230454)	TH1	Rated 125VAC, 15A, 80°C, 6K cycles. For all models.	cURus
				TH2	Rated 125VAC, 15A, 80°C, 6K cycles. For all models.	cURus
				TH3	Rated 125VAC, 15A, 80°C, 6K cycles. For all models.	cURus
1	4	Thermostat	CHUNG SHUN INDUSTRIAL CO	CH-002	Rated 125VAC, 15A, 60Hz. 10E4 cycles, T250. For mdoels EF-30D, ZCR 3824, ZCR 3830, ZCR 3840.	cURus
			AUONE ELECTRICAL CO LTD	901B	Rated 125VAC, 15A, 60Hz. 10E4 cycles, T250. For mdoels EF-30D, ZCR 3824, ZCR 3830, ZCR 3840.	cURus
			CIXI CITY KADA THERMOSTAT CO LTD	KDT-200	Rated 125VAC, 15A, 60Hz. 10E4 cycles, T250. For mdoels EF-30D, ZCR 3824, ZCR 3830, ZCR 3840.	cURus
1, 48	5	Glass panel	Various	Various	Tempered glass slot in steel frame, 4.0 mm thick minimum. Secured to enclosure by screws. For all models.	NR



4.0 Critical Components						
Photo #	Item no. <sup>1</sup>	Name	Manufacturer/ trademark <sup>2</sup>	Type / model <sup>2</sup>	Technical data and securement means	Mark(s) of conformity <sup>3</sup>
2, 64	6	Strain Relief	HEAVY POWER CO LTD	6P-4	Bushings, incorporating a strain relief. For all models.	cURus
				6N-4	Bushings, incorporating a strain relief. For all models.	cURus
				6N3-4	Bushings, incorporating a strain relief. For all models.	cURus
				7N-2	Bushings, incorporating a strain relief. For all models.	cURus
			KAI SUH SUH ENTERPRISE CO LTD	SR-F41	Bushings, incorporating a strain relief. For all models.	cURus
				SR-F51	Bushings, incorporating a strain relief. For all models.	cURus
				SR-6P1	Bushings, incorporating a strain relief. For all models.	cURus
				SR-6P3	Bushings, incorporating a strain relief. For all models.	cURus
				SR-6R1	Bushings, incorporating a strain relief. For all models.	cURus
				SR-7R1	Bushings, incorporating a strain relief. For all models.	cURus
				SR-7R3	Bushings, incorporating a strain relief. For all models.	cURus
			HUA WEI INDUSTRIAL CO LTD	4W-2	Bushings, incorporating a strain relief. For all models.	cURus
				5W-2	Bushings, incorporating a strain relief. For all models.	cURus
2, 48	7	Enclosure	Various	Various	Painted steel, 0.7 mm thick. Secured to adjacent enclosure by screws. For all models.	NR
4, 59	8	Internal wire	Various	1015	Rated 16-22AWG, 16AWG for circuit more than 12A specially, 105°C, 600 V , VW-1. For all models.	cURus
				3135	Rated 16-22AWG, 16AWG for circuit more than 12A specially, 200°C, 600 V , VW-1. For all models.	cURus
				3122	Rated 16-22AWG, 16AWG for circuit more than 12A specially, 200°C, 300 V , VW-1. For all models.	cURus
				1007	Rated 16-22AWG, 16AWG for circuit more than 12A specially, 80°C, 300 V , VW-1. For all models.	cURus
4, 63	9	Synchronous motor	NINGBO GENGMEI ELECTRIC APPLIANCE TECH CO LTD	TYC50C	110/120V, 50/60Hz, 4W. Z.P. Secured to bracket by 2 screws. Class A. For all models.	See 5.0
			FOSHAN JUNTAI ELECTRICAL APPLIANCES CO LTD	TYC50C	110-120VAC, 50/60Hz, Class A. Z.P. For all models.	cURus

4.0 Critical Components						
Photo #	Item no. <sup>1</sup>	Name	Manufacturer/ trademark <sup>2</sup>	Type / model <sup>2</sup>	Technical data and securement means	Mark(s) of conformity <sup>3</sup>
5, 59	10	PCB	LEUCHTEK ELECTRONICS (ZHEJIANG) CO LTD	PFR-1	V-0, 130°C. Min. thickness: 1.0mm. For all models.	cURus
				PCEM-1	V-0, 130°C. Min. thickness: 1.0mm. For all models.	cURus
			SHANDONG JINBAO TECH-INNOV CORPORATION	CEM-1	V-0, 130°C. Min. thickness: 1.0mm. For all models.	cURus
				FR-1	V-0, 130°C. Min. thickness: 1.0mm. For all models.	cURus
			WENZHOU ZHENGHAO ELECTRONIC CO LTD	KZ	V-0, 130°C. Min. thickness: 1.0mm. For all models.	cURus
			KINGBOARD LAMINATES HOLDINGS LTD	KB	V-0, 130°C. Min. thickness: 1.0mm. For all models.	cURus
5, 61, 61c, 61d	11	Transformer	NINGBO GENGMEI ELECTRIC APPLIANCE TECH CO LTD	GM300-01	Input: 120V, 60Hz; Output: 11V, 300mA. Soldered to A Main PCB. For all models.	See 5.0
			ZHEJIANG DECHUANG TRANSFORMER MANUFACTURING CO LTD (E311389)	DCU06143	Class 2, input 120V, 60Hz, output 11 VAC, 300mA. Soldered to A Main PCB. For all models.	cURus
			NINGBO ZLOR ELECTRONICS CO LTD	GS-EF20-007	Input:100-250V, 50/60Hz Output: 12V, 1A. Soldered to B Main PCB. For all models. .	See 5.0
			NINGBO GENGMEI ELECTRIC APPLIANCE TECH CO LTD	GS-EF20-007	Input:100-250V, 50/60Hz Output: 12V, 1A. Soldered to B Main PCB. For all models.	See 5.0
			NINGBO GENGMEI ELECTRIC APPLIANCE TECH CO LTD.	EF25	Input:100-250V, 50/60Hz Output: 12V, 2A. Soldered to B Main PCB. For all models.	See 5.0
5, 61	12	Relay	XIAMEN HONGFA ELECTROACOUSTIC CO LTD	JQC-3FF-12VDC-1HS	125V, 15A. 10E4 cycles, -40~80°C. Secured to PWB by solder. For all models.	cURus
			NINGBO HUILONGCANG ELECTRONICS CO LTD	973-12VDC-SL-A	125V, 15A. 10E4 cycles, -40~80°C. For all models.	cURus
			NINGBO ZETTLER ELECTRONICS CO LTD	JQC-3FF	125V, 15A. 10E4 cycles, -40~80°C. For all models.	cURus
			SANYOU CORPORATION LIMITED	SRD-S-112DM	125V, 15A. 10E4 cycles, -40~80°C. For all models.	cURus

4.0 Critical Components						
Photo #	Item no. <sup>1</sup>	Name	Manufacturer/ trademark <sup>2</sup>	Type / model <sup>2</sup>	Technical data and securement means	Mark(s) of conformity <sup>3</sup>
5, 61	13	X2 capacitor	WINDAY ELECTRONIC (DONG GUAN) CO LTD (E302125)	MPX	250V/275V/310V, 0.1uF or 0.15uF, secured to PCB by solder. For all models.	cURus
			DAIN ELECTRONICS CO LTD (E147776)	MPX	275V, 0.1uF or 0.15uF, secured to PCB by solder. For all models.	cURus
			JIANGSU XINGHUA HUAYU ELECTRONICS CO LTD (E311166)	MPX	275V, 0.1uF or 0.15uF, secured to PCB by solder. For all models.	cURus
			SHENZHEN WEIDY INDUSTRIAL DEVELOPMENT CO LTD (E334332)	MKP	250V/275V/310V, 0.1uF or 0.15uF, secured to PCB by solder. For all models.	cURus
5, 61	14	Quick connector	Various	Various	300V, 105°C, for lead wire 16-20 AWG. Each with a PVC insulators. For all models.	cURus
11	15	Cable tie	Various	Various	Rated 80°C. Tied up internal wires together. For all models.	cURus
11, 60	16	Fiberglass sleeving	Various	Various	160 °C, 600 V, VW-1. Wraaped internal wires that adjacent to the lamps. For all models.	cURus
36	17	Lamp holder	ZHONGSHAN CITY HENGLAN TOWN RUICHENG HOME ELECTRIC APPLIANCE FITTING	E12-105	125V, 75W, T220. Secured on metal bracket by screws. For models EF-48, EF-36.	cURus
			BAILE ELECTRICAL FACTORY (E329778)	RS-1205-1	125V, 75W, T220. Secured on metal bracket by screws. For models EF-48, EF-36.	cURus
56	18	Flame Film	AVERY DENNISON (CHINA) CO LTD	606C	PET, V-2, RTI(105 105 105), 0.125mm minimum, Secured to metal enclosure by special structure. For all models.	cURus

4.0 Critical Components						
Photo #	Item no. <sup>1</sup>	Name	Manufacturer/ trademark <sup>2</sup>	Type / model <sup>2</sup>	Technical data and securement means	Mark(s) of conformity <sup>3</sup>
59	19	Wire connector	HEAVY POWER CO LTD	CE2	Rated 300V, 105°C minimum. Suitable for wire size #14-22AWG. For all models.	cURus
				CE5	Rated 300V, 105°C. same as above. For all models.	cURus
				CE2X	Rated 300V, 105°C. same as above. For all models.	cURus
				CE5X	Rated 300V, 105°C. same as above. For all models.	cURus
			JIANGXI GAOCHAO INDUSTRIAL CO LTD (E494015)	CE2	Rated 300V, 105°C. same as above. For all models.	cURus
				CE5	Rated 300V, 105°C. same as above. For all models.	cURus
				CE2X	Rated 300V, 105°C. same as above. For all models.	cURus
				CE5X	Rated 300V, 105°C. same as above. For all models.	cURus
			KAI SUH SUH ENTERPRISE CO LTD (E116091)	CE2	Rated 300V, 105°C. same as above. For all models.	cURus
				CE5	Rated 300V, 105°C. same as above. For all models.	cURus
				CE-2VO	Rated 300V, 105°C. same as above. For all models.	cURus
				CE-5VO	Rated 300V, 105°C. same as above. For all models.	cURus
			SHENZHEN HONGYU ELECTRICAL CO LTD (E314734)	HY-CE2	Rated 300V, 105°C. same as above. For all models.	cURus
				HY-CE5	Rated 300V, 105°C. same as above. For all models.	cURus
				HY-CE2X	Rated 300V, 105°C. same as above. For all models.	cURus
				HY-CE5X	Rated 300V, 105°C. same as above. For all models.	cURus
60	20	Fan motor	FOSHAN CITY SHUNDE DISTRICT LEPUDA MOTOR CO LTD	PLD48-120	120V, 60Hz, 0.19A, Class H. Z.P. Secured to metal enclosure by screws. For all models.	cURus
			YUYAO LIZHOU MACHINERY & ELECTRIC APPLIANCES MANUFACTURE CO LTD	YJF-4816	120V, 60Hz, Class B. Z.P. For all models.	cETLus
			NINGBO GENGMEI ELECTRIC APPLIANCE TECH CO LTD	YJF-4816	120V, 60Hz, 17W. Class A. Z.P. Secured to motor holder by screws. For all models.	See 5.0

4.0 Critical Components						
Photo #	Item no. <sup>1</sup>	Name	Manufacturer/ trademark <sup>2</sup>	Type / model <sup>2</sup>	Technical data and securement means	Mark(s) of conformity <sup>3</sup>
60	21	Fan blade	Various	Various	Aluminium, Minimum 0.6mm thick, Secured to metal bracket by special structure. For all models.	NR
60	22	Fan bracket	Various	Various	Zinc plated steel, 1.1mm thick. Secured to support by 4 screws. For all models.	NR
60	23	Thermal cut off	AUONE ELECTRICAL CO LTD	AUT-95-P	Non-self resetting, 16A, 125V, Tf= 95°C. Secured to slot of Mica Sheet by two rivets. For all models.	cURus
			CHUNG SHUN INDUSTRIAL CO	CH-005-H	Non-self resetting, 16A, 125V, Tf= 95°C. For all models.	cURus
60	24	Mica plate	Various	Various	V-0, 0.8 mm thick minimum. Secured to Plastic Bracket by 2 position studs. For all models.	NR
60	25	Heating element	NINGBO GENGMEI ELECTRIC APPLIANCE TECH CO LTD	Various	120V, 60Hz, 1500W, Secured to mica plate by special structure. For all models.	NR
60	26	Plastic bracket	E I DUPONT DE NEMOURS & CO INC	FR50	PA66, 5VA, HWI(0), HAI(0), RTI (130,115,115), Minimum 1.6mm thick, Secured on the metal base by screws. For all models.	cURus
61	27	Y capacitor	JYH CHUNG ELECTRONICS CO LTD	JD	Type Y1, 400V, 2200pF, Only soldered to B Main PCB. For all models.	cURus
			NANJING YUYUE ELECTRONICS CO LTD	CT7	Type Y1, 400V, 2200pF, Only soldered to B Main PCB. For all models.	cURus
			SHANTOU HIGH-NEW TECHNOLOGY DEVELOPMNT ZONE SONGTIAN ENTERPRISE CO LTD	CD	Type Y1, 400V, 2200pF, Only soldered to B Main PCB. For all models.	cURus
			SHENZHEN WEIDY INDUSTRIAL DEVELOPMENT CO LTD	AR	Type Y1, 500V, 2200pF, Only soldered to B Main PCB. For all models.	cURus
			GUANGDONG HUIWAN ELECTRONICS TECHNOLOGY CO LTD	AR	Type Y1, 500V, 2200pF, Only soldered to B Main PCB. For all models.	cURus
			JYA-NAY CO LTD	JN	Type Y1, 400V, 2200pF, Only soldered to B Main PCB. For all models.	cURus



4.0 Critical Components						
Photo #	Item no. <sup>1</sup>	Name	Manufacturer/ trademark <sup>2</sup>	Type / model <sup>2</sup>	Technical data and securement means	Mark(s) of conformity <sup>3</sup>
61	28	Fuse	DONGGUAN BETTER ELECTRONIC TECHNOLOGY CO LTD	522	250V, 1A or 2A. Only soldered to B Main PCB. For all models.	cURus
				333	250V, 1A or 2A. Same as above	cURus
				931	250V, 1A or 2A. Same as above	cURus
				932	250V, 1A or 2A. Same as above	cURus
				933	250V, 1A or 2A. Same as above	cURus
			WALTER ELECTRONIC CO LTD	FSC	250V, 1A or 2A. Same as above	cURus
				MGF	250V, 1A or 2A. Same as above	cURus
			SHENGZHEN LANSON ELECTRONICS CO LTD	3K	250V, 1A or 2A. Same as above	cURus
				3N	250V, 1A or 2A. Same as above	cURus
				6E	250V, 1A or 2A. Same as above	cURus
			ZHONGSHAN LANBAO ELECTRIC APPLIANCE CO LTD	1T	250V, 1A or 2A. Same as above	cURus
				2T	250V, 1A or 2A. Same as above	cURus
				RTI-10	250V, 1A or 2A. Same as above	cURus
				LB630	250V, 1A or 2A. Same as above	cURus
			HONG HU BLUELIGHT ELECTRONIC CO LTD	6ET	250V, 1A or 2A. Same as above	cURus
			DONGGUAN HONGDA ELECTRONIC TECHNOLOGY CO LTD	2008	250V, 1A or 2A. Same as above	cURus
				2009	250V, 1A or 2A. Same as above	cURus
				31TD	250V, 1A or 2A. Same as above	cURus
			SUZHOU WALTER ELECTRONIC CO LTD	2010	250V, 1A or 2A. Same as above	cURus
				2020	250V, 1A or 2A. Same as above	cURus
61	29	Opto Coupler (U1)	Various	Double protection optical isolated switches	Rated 5000V minimum. For all models.	cURus
1	30	Marking label (Not shown)	Various	Various	Rated 100°C minimum, Secured to enclosure by adhesive. For all models.	cURus

NOTES:

- 1) Not all item numbers are indicated (called out) in the photos, as their location is obvious.
- 2) "Various" means any type, from any manufacturer that complies with the "Technical data and securement means" and meets the "Mark(s) of conformity" can be used.
- 3) Indicates specific marks to be verified, which assures the agreed level of surveillance for the component. "NR" - indicates Unlisted and only visual examination is necessary. "See 5.0" indicates Unlisted components or assemblies to be evaluated periodically refer to section 5.0 for details.

## 5.0 Critical Unlisted CEC Components

### INSULATED COIL

Photo #	Item no.	Name	Manufacturer/Trademark	Type / model
60	20	Fan motor	NINGBO GENGMEI ELECTRIC APPLIANCE TECH CO LTD	YJF-4816
Electrical Rating: 120V, 60Hz, 17W				Insulation class A
Component Standard used: UL 1004-1:2012 Ed.2+R:07Aug2018 UL 1004-2:2014 Ed.2+R:06Feb2015 CSA C22.2#77:2014 Ed.8+E1				

### MATERIALS LIST

Component	Manufacturer	Type/model	Dimensions/thickness/assembly information
Magnet wire	HU ZHOU KANG LI WIRE & CABLE CO LTD	QZY-1/180	Polyester-imide, MW30-C, Class 180. E346033
Bobbin	TORAY INDUSTRIES INC	CM3014G-15	V-0, RTI(120,105,105). Min. thickness: 0.75mm. E41797
Insulating tape	SUZHOU MAILADUONA ELECTRIC MATERIAL CO LTD	JY312#	130°C. E188295
Lead wire	NINGBO HAOGUANG ELECTRIC APPLIANCE CO LTD	1015	Min. 20AWG, 600V, 105°C. E192545
	YUYAO CHENG ZHU ELECTRIC APPLIANCE FACTORY	1015	Min. 20AWG, 600V, 105°C. E231643
	GUANGDONG YONGROI CABLE TECHNOLOGY CO LTD	1015	Min. 20AWG, 600V, 105°C. E204893
	ZHONG SHAN DONG FENG FU SHENG WIRE CABLE FACTORY	1015	Min. 20AWG, 600V, 105°C. E236761
	Various	1015	Min. 20AWG, 600V, 105°C. UL approved.
	Various	3122	Min. 20AWG, 300V, 200°C. UL approved.

### WINDING(S) RESISTANCE

Winding Designation	Wire Size (mm <sup>2</sup> )	Wire Type	Turns	Volts	Amps	DC resistance (Ω) +/- 10%:
Winding	0.21	QZY-1/180	/	/	/	56.9Ω

### VERIFICATION PROCESS

Frequency: <b>Annual</b>	Test Site: <b>CEC</b>	Number of samples to test: <b>1</b>	
Test Name	Test Parameters		
Winding resistance	See resistance per winding above.		
Dielectric Strength	Apply voltage Between	Test Voltage	Test Time
	Winding to core	1240V	60s

5.0 Critical Unlisted CEC Components						
INSULATED COIL						
Photo #	Item no.	Name	Manufacturer/Trademark	Type / model		
4, 63	9	Synchronous motor	NINGBO GENGMEI ELECTRIC APPLIANCE TECH CO LTD	TYC50C		
Electrical Rating: 110/120V, 50/60Hz, 4W				Insulation class A		
Component Standard used:		UL 1004-1:2012 Ed.2+R:07Aug2018 UL 1004-2:2014 Ed.2+R:06Feb2015 CSA C22.2#77:2014 Ed.8+E1				
MATERIALS LIST						
Component	Manufacturer	Type/model	Dimensions/thickness/assembly information			
Magnet wire	HU ZHOU KANG LI WIRE & CABLE CO LTD	QZY-1/180	Polyester-imide, MW30-C, Class 180. E346033			
Bobbin	SANSHUI CITY GOLD LAKE ENGINEERING PLASTIC CO LTD	PP-FT200	V-0, RTI(65,65,65). E200174			
Insulating tape	SUZHOU MAILADUONA ELECTRIC MATERIAL CO LTD	JY312#	130°C. E188295			
Lead wire	YUYAO YONGFENG ELECTRIC WIRE FACTORY	1007	22AWG, 300V, 80°C. E304869			
	Various	1007	Min. 22AWG, 300V, 80°C. UL approved.			
WINDING(S) RESISTANCE						
Winding Designation	Wire Size (mm <sup>2</sup> )	Wire Type	Turns	Volts	Amps	DC resistance (Ω) +/- 10%:
Winding	0.07	QZY-1/180	/	/	/	3726Ω
VERIFICATION PROCESS						
Frequency: Annual	Test Site: CEC			Number of samples to test: 1		
Test Name	Test Parameters					
Winding resistance	See resistance per winding above.					
Dielectric Strength	Apply voltage Between		Test Voltage		Test Time	
	Winding to core		1240V		60s	

5.0 Critical Unlisted CEC Components						
INSULATED COIL						
Photo #	Item no.	Name	Manufacturer/Trademark		Type / model	
, 61, 61c, 61	11	Transformer	NINGBO GENGMEI ELECTRIC APPLIANCE TECH CO LTD		GM300-01	
Electrical Rating:			Input: 120V, 60Hz; Output: 11V, 300mA			Insulation class     A
Component Standard used:		UL 5085-1:2006 Ed.1 +R:06Dec2013 UL 5085-3:2006 Ed.1+R:30Nov2012 (R2015) [CSA C22.2#66.1 :2006 Ed.1 +G1;G2] (R2015) [CSA C22.2#66.3:2006 Ed.1 +G1]				
MATERIALS LIST						
Component		Manufacturer	Type/model	Dimensions/thickness/assembly information		
Magnet wire		ZHEJIANG HONGBO TECHNOLOGY CO LTD	xUEW/130, QA-x/130	MW 75-C, Polyurethane, 130°C. E221719		
		NANJING CHUNDUN ELECTRONIC TECHNOLOGY CO LTD	xUEW, QA-x/130	MW 75-C, Polyurethane, 130°C. E302706		
Bobbin		POLYPLASTICS CO LTD	CN7030	PBT 130°C. E213445		
		NINGBO FUTIAN NEW MATERIAL TECHNOLOGY CO LTD	FS-088	PBT 105°C. E152381		
Insulating tape		JINGJIANG JINGYI ADHESIVE PRODUCT CO LTD	JY25-A	Polyester Film. 130°C. Min. thickness: 0.025mm		
Lamination core		JIANGYIN HUAXIN ELECTRICAL EQUIPMENT CO LTD	DW1300	Silicon steel strip. Min. thickness: 0.5mm		
Thermal protector		ZHANGZHOU AUPO ELECTRONICS CO LTD	A4	130°C. 250V, 2A		
			A4-F	130°C. 250V, 2A		
		XIAMEN SET ELECTRONICS CO LTD	K4	130°C. 250V, 2A		
WINDING(S) RESISTANCE						
Winding Designation	Wire Size (mm <sup>2</sup> )	Wire Type	Turns	Volts	Amps	DC resistance (Ω) +/- 10%:
Primary winding	0.23	xUEW/130, QA-x/130	/	/	/	146.4Ω
Secondary winding	0.5	xUEW/130, QA-x/130	/	/	/	1.99Ω

5.0 Critical Unlisted CEC Components			
VERIFICATION PROCESS			
Frequency:	Annual	Test Site:	CEC
		Number of samples to test:	1
Test Name	Test Parameters		
Winding resistance	See resistance per winding above.		
Dielectric Strength	Apply voltage Between	Test Voltage	Test Time
	Primary to core	1240V	60s
	Primary to secondary	2500V	60s
	Secondary to core	500V	60s



5.0 Critical Unlisted CEC Components						
INSULATED COIL						
Photo #	Item no.	Name	Manufacturer/Trademark	Type / model		
, 61, 61c, 61	11	Transformer	NINGBO ZLOR ELECTRONICS CO LTD	GS-EF20-007		
Electrical Rating:		Input:100-250V, 50/60Hz; Output: 12V, 1A			Insulation class A	
Component Standard used:		UL 5085-1:2006 Ed.1 +R:06Dec2013 UL 5085-3:2006 Ed.1+R:30Nov2012 (R2015) [CSA C22.2#66.1 :2006 Ed.1 +G1;G2] (R2015) [CSA C22.2#66.3:2006 Ed.1 +G1]				
MATERIALS LIST						
Component	Manufacturer	Type/model	Dimensions/thickness/assembly information			
Magnet wire	SHANGHAI SURAN ELECTRONICS FACTORY	TIW-B*	Rated 155°C, minimum, N1: Φ0.15mm, 174Ts; N3: Φ0.15mm, 20Ts			
Triple Insulated Wire	SHANGHAI SURAN ELECTRONICS FACTORY	TIW-B*	Rated 130°C. N2: Φ0.30mm, 16Ts			
Bobbin	CHANG CHUN PLASTICS CO LTD	PM, type T375J	Rated 94V-0, HWI=1, HAI=0, 150°C, 0.75mm thick minimum			
Insulating tape	Various	PET film insulating tapes with acrylic adhesive	Rated 130°C minimum.			
WINDING(S) RESISTANCE						
Winding Designation	Wire Size (mm <sup>2</sup> )	Wire Type	Turns	Volts	Amps	DC resistance (Ω) +/- 10%:
Primary winding	0.15	TIW-B*	/	/	/	1.8Ω
Secondary winding	0.15	TIW-B*	/	/	/	0.1Ω
VERIFICATION PROCESS						
Frequency: <b>Annual</b>	Test Site: <b>CEC</b>			Number of samples to test: <b>1</b>		
Test Name	Test Parameters					
Winding resistance	See resistance per winding above.					
Dielectric Strength	Apply voltage Between		Test Voltage		Test Time	
	Primary to core		1200V		60s	
	Primary to secondary		2500V		60s	
	Secondary to core		500V		60s	

5.0 Critical Unlisted CEC Components						
INSULATED COIL						
Photo #	Item no.	Name	Manufacturer/Trademark		Type / model	
, 61, 61c,61	11	Transformer	NINGBO GENGMEI ELECTRIC APPLIANCE TECH CO LTD		GS-EF20-007	
Electrical Rating:		Input:100-250V, 50/60Hz; Output: 12V, 1A			Insulation class A	
Component Standard used:		UL 5085-1:2006 Ed.1 +R:06Dec2013 UL 5085-3:2006 Ed.1+R:30Nov2012 (R2015) [CSA C22.2#66.1 :2006 Ed.1 +G1;G2] (R2015) [CSA C22.2#66.3:2006 Ed.1 +G1]				
MATERIALS LIST						
Component		Manufacturer	Type/model	Dimensions/thickness/assembly information		
Magnet wire		SHANGHAI SURAN ELECTRONICS FACTORY	TIW-B*	Rated 155°C, minimum, N1: Φ0.15mm, 174Ts; N3: Φ0.15mm, 20Ts		
Triple Insulated Wire		SHANGHAI SURAN ELECTRONICS FACTORY	TIW-B*	Rated 130°C. N2: Φ0.30mm, 16Ts		
Bobbin		CHANG CHUN PLASTICS CO LTD	PM, type T375J	Rated 94V-0, HWI=1, HAI=0, 150°C, 0.75mm thick minimum		
Insulating tape		Various	PET film insulating tapes with acrylic adhesive	Rated 130°C minimum.		
WINDING(S) RESISTANCE						
Winding Designation	Wire Size (mm <sup>2</sup> )	Wire Type	Turns	Volts	Amps	DC resistance (Ω) +/- 10%:
Primary winding	0.15	TIW-B*	/	/	/	1.8Ω
Secondary winding	0.15	TIW-B*	/	/	/	0.1Ω
VERIFICATION PROCESS						
Frequency:	Annual	Test Site: CEC		Number of samples to test: 1		
Test Name		Test Parameters				
Winding resistance		See resistance per winding above.				
Dielectric Strength		Apply voltage Between		Test Voltage	Test Time	
		Primary to core		1200V	60s	
		Primary to secondary		2500V	60s	
		Secondary to core		500V	60s	

5.0 Critical Unlisted CEC Components							
INSULATED COIL							
Photo #	Item no.	Name	Manufacturer/Trademark		Type / model		
, 61, 61c,61	11	Transformer	NINGBO GENGMEI ELECTRIC APPLIANCE TECH CO LTD.		EF25		
Electrical Rating:		Input:100-250V, 50/60Hz Output: 12V, 2A.			Insulation class    A		
Component Standard used:		UL 5085-1:2006 Ed.1+R:02Jun2022 UL 5085-3:2006 Ed.1+R:29Nov2017 (R2015) [CSA C22.2#66.1:2006 Ed.1+G1;G2] (R2015) [CSA C22.2#66.3:2006 Ed.1+G1]					
MATERIALS LIST							
Component		Manufacturer	Type/model	Dimensions/thickness/assembly information			
Magnet wire		SHANGHAI SURAN ELECTRONICS FACTORY	QA-1/2UEW	Rated 155°C, minimum, N1: Φ0.3mm, 37Ts; N3: Φ0.3mm, 35Ts			
Triple Insulated Wire		SHANGHAI SURAN ELECTRONICS FACTORY	TIW-B	Rated 130°C. N2: Φ0.6mm, 12Ts			
Bobbin		CHANG CHUN PLASTICS CO LTD	PM, type T375J	Rated 94V-0, HWI=1, HAI=0, 150°C,  0.75mm thick minimum			
Insulating tape		Various	PET film insulating tapes with acrylic adhesive	Rated 130°C minimum.			
WINDING(S) RESISTANCE							
Winding Designation		Wire Size (mm <sup>2</sup> )	Wire Type	Turns	Volts	Amps	DC resistance (Ω) +/- 10%:
Primary winding		0.07	QA-1/2UEW	/	/	/	0.85Ω
Secondary winding		0.28	TIW-B	/	/	/	0.06Ω
VERIFICATION PROCESS							
Frequency: <b>Annual</b>		Test Site: <b>CEC</b>			Number of samples to test: <b>1</b>		
Test Name		Test Parameters					
Winding resistance		See resistance per winding above.					
Dielectric Strength		Apply voltage Between			Test Voltage	Test Time	
		Primary to core			1200V	60s	
		Primary to secondary			2500V	60s	
		Secondary to core			500V	60s	

## 6.0 Critical Features

Recognized Component - A component part, which has been previously evaluated by an accredited certification

body with restrictions and must be evaluated as part of the basic product considering the restrictions as specified by the Conditions of Acceptability.

Listed Component - A component part, which has been previously Listed or Certified by an accredited Certification Organization with no restrictions and is used in the intended application within its ratings.

Unlisted Component - A part that has not been previously evaluated to the appropriate designated component standard. It may also be a Listed or Recognized component that is being used outside of its evaluated Listing or component recognition.

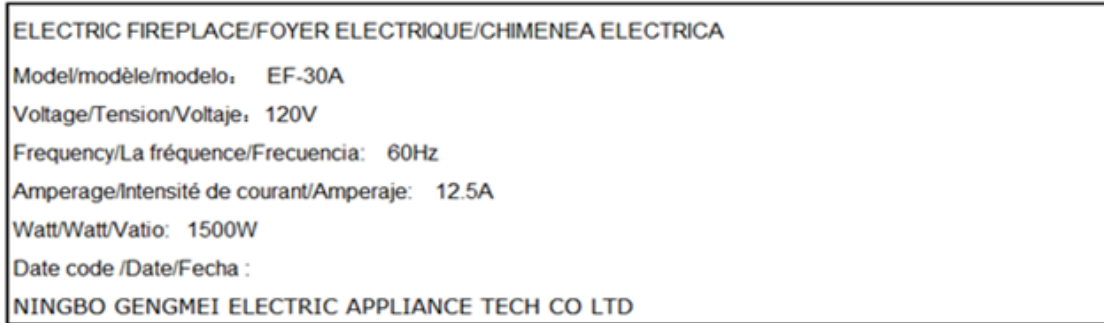
Critical Features/Components - An essential part, material, subassembly, system, software, or accessory of a product that has a direct bearing on the product's conformance to applicable requirements of the product standard.

Construction Details - For specific construction details, reference should be made to the photographs and descriptions. All dimensions are approximate unless specified as exact or within a tolerance. In addition to the specific construction details described in this Report, the following general requirements also apply.

1. Spacing - In primary circuits, 1.6mm minimum spacings are maintained through air and over surfaces of insulating material between live parts and non-current-carrying conductive parts other than the enclosure, 6.4mm minimum spacings through air and 12.7mm minimum spacings over surfaces are maintained between live parts and a conductive enclosure.
2. Mechanical Assembly - Components such as switches, fuseholders, connectors, wiring terminals and display lamps are mounted and prevented from shifting or rotating by the use of lockwashers, starwashers, or other mounting format that prevents turning of the component.
3. Corrosion Protection - All ferrous metal parts are protected against corrosion by painting, plating or the equivalent.
4. Accessibility of Live Parts - All uninsulated live parts in primary circuitry are housed within a metal enclosure constructed with no openings other than those specifically described in Sections 4 and 5.
5. Grounding - All exposed dead-metal parts and all dead-metal parts within the enclosure that are exposed are connected to the grounding lead of the power supply cord or the equipment grounding terminal.
6. Polarized Connection - NA
7. Internal Wiring - Internal wiring is routed away from sharp or moving parts. Internal wiring leads terminating in soldered connections are made mechanically secure prior to soldering. Recognized Component separable (quick disconnect) connectors of the positive detent type, closed loop connectors, or other types specifically described in the text of this report are also acceptable as internal wiring terminals. At points where internal wiring passes through metal walls or partitions, the wiring insulation is protected against abrasion or damage by plastic bushings or grommets. All wiring is minimum 22 AWG, with a minimum rating of 300V, 80°C.
8. Schematics - NA
9. Markings - The product is marked on a labeling system as described in item no. 30 of Section 4.0 as follows: applicant's name, brand name, model number, date of manufacturer, electrical ratings.  
Refer to Illustration No. 1, 1a, 1c, 1d for details
10. Cautionary Markings - Refer to Illustration No. 2, 3 for details.
11. Installation, Operating and Safety Instructions - Instructions for installation and use of this product are provided by the manufacturer. Refer to Illustration No. 4-4a for details.  
Remark: only representative manual was shown in section 7.

## 7.0 Illustrations

### Illustration 1 -Markings



Note: Only representative markings were shown here, others share the same marking, except the model name.



## 7.0 Illustrations

### Illustration 1a -Markings for ML 1

ELECTRIC FIREPLACE/FOYER ELECTRIQUE/CHIMENEA ELECTRICA	
Model/modèle/modelo:	EF-30BFGPLED
Voltage/Tension/Voltaje:	120V
Frequency/La fréquence/Frecuencia:	60Hz
Amperage/Intensité de courant/Amperaje:	12.5A
Watt/Watt/Vatio:	1500W
Date code /Date/Fecha :	
Worldwide Distribution,LLLP	

Note: Only representative markings were shown here, others share the same marking, except the model name.

### Illustration 1c -Markings for ML 3

ELECTRIC FIREPLACE		
MODEL	QRBL-G42	CONFORMS TO UL STD.2021 CERTIFIED TO CSA STD.C22.2NO.46
VOLTAGE	120V	
FREQUENCY	60Hz	
AMPERAGE	12.5A	
WATTS	1500W	
DATE CODE	MM/YY	
Ningbo Heyme Information Technology Co.,Ltd.		

Note: Only representative markings were shown here, others share the same marking, except the model name.

### Illustration 1d -Markings for ML 4

ELECTRIC FIREPLACE		
MODEL	PFL 255	CONFORMS TO UL STD.2021 CERTIFIED TO CSA STD.C22.2NO.46
VOLTAGE	120V	
FREQUENCY	60Hz	
AMPERAGE	12.5A	
WATTS	1500W	
DATE CODE	MM/YY	
MG HOME SOLUTION LLC		

## 7.0 Illustrations

### Illustration 2- Cautionary marking



**CAUTION** – High temperature, keep electrical cords, drapery, and other furnishings at least 3 feet (0.9 m) from the front of the heater and away from the side and rear.

Attention - haute température, garder les cordons électriques, draperies, et d'autres meubles d'au moins 3 pieds (0.9 m) à L'avant de l'appareil et loin du CÔTÉ et de L'arrière.

Remark: the height of the symbols shall be at least 1 inch (25.4mm), and they shall be a color that contrasts with that of the background and that matches the lettering. The lettering shall not be less than 3.2 mm in height.

## 7.0 Illustrations

### Illustration 3- Cautionary marking for carton

Voltage :120V

Wattage : **1500W**

- 1) Avoid the use of an extension cord. Because the extension cord may overheat, it cause a risk of fire.
- 2) Thie heater is hot when in use. To avoid burns, do not let bare skin touch hot surfaces. If provided, use handles when moving this heater. Keep combudtible materials, such as furniture, pillows, bedding papers, clothes, and curains,at least 3feets(0.9m)from the front of heater and keep them away from the sides and rear.
- 3) The heater is not to be used in wet or moist locations.

**Voltage: 120V**

**Watt: 1500W**

- 1) Evitez d'utiliser une rallonge, car elle risque de surchauffer et de provoquer un incendie.
- 2) Le radiateur est chaud lors de son utilisation.Pour éviter les brûlures, ne laissez pas la peau nue toucher les surfaces chaudes. , à au moins 3 pieds (0,9 m) de l'avant du radiateur et tenez-les éloignés des côtés et de l'arrière.
- 3) L'appareil de chauffage ne doit pas être utilisé dans des endroits humides ou mouillés.

Remark: All information shall be grouped together and appear on one side, except the bottom, of the packaging. The lettering shall not be less than 3.2 mm in height.

## 7.0 Illustrations

### Illustration 4- Installation, Operating and Safety Instructions

The texts appear this only are warning on manual , other manual instruction(such Product specification and basic features, Main Features, operation and installation instruction and so on) will be sent with this together.

#### Instructions for use and care

The upper case letters in the instructions relating to the risk of fire, electric shock, and injury to persons shall be not less than 1/12 inch(2.1mm) high and the lower case letters shall not be less than 1/16 inch (1.6mm) high.

"IMPORTANT INSTRUCTIONS" and "SAVE THESE INSTRUCTIONS" shall be in upper case letter not less than 3/16 inch(4.8mm) high.

The items may be numbered. In the list of items the first shall be "Read all instructions before using the heater." and the last shall be "SAVE THESE INSTRUCTIONS." Other important instructions relating to the risk of fire, electric shock, and injury to persons considered appropriate by the manufacturer may be inserted.

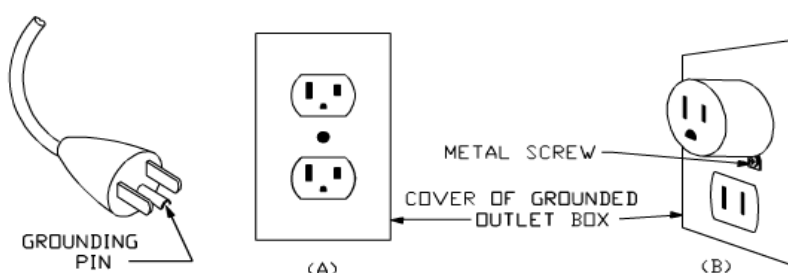
#### IMPORTANT INSTRUCTIONS

1. Read all instructions before installing or using this heater.
2. This heater is hot when in use. To avoid burns, do not let bare skin touch hot surfaces. Keep combustible materials, such as furniture, pillows, bedding, papers, clothes, etc, and curtains at least 3 feet (0.9 m) from the front of the heater and keep them away from the sides and rear(sides and rear restrictions apply to location dedicated heaters only)
3. Extreme caution is necessary when any heater is used by or near children or invalids and whenever the heater is left operating and unattended.
4. Do not operate any heater after it malfunctions. Disconnect power at service panel and have heater inspected by a reputable electrician before reusing.
5. Do not use outdoors. (Omitted if the heater is intended for outdoor use.)
6. To disconnect heater, turn controls to off, and turn off power to heater circuit at main disconnect panel(or operate internal disconnect switch if provided).
7. Do not insert or allow foreign objects to enter any ventilation or exhaust opening as this may cause an electric shock or fire, or damage the heater.
8. To prevent a possible fire, do not block air intakes or exhaust in any manner.
9. A heater has hot and arcing or sparking parts inside. Do not use it in areas where gasoline paint, or flammable vapors or liquids are used or stored.
10. Use this heater only as described in this manual. Any other use not recommended by the manufacturer may cause fire, electric shock, or injury to persons.
11. "SAVE THESE INSTRUCTIONS"

#### Grounding instructions

The instruction manual of cord —connected, grounded heaters shall include the following or equivalent wording:

(In the case of a heater rated for a nominal 120 volts.) This heater is for use on 120 volts. The cord has a plug as shown at A in figure 60.1. An adapter as shown at C is available for connecting three -blade grounding-type plugs to two-slot receptacles. The green grounding lug extending from the adapter must be connected to a permanent ground such as a properly grounded outlet box. The adapter should not be used if a three-slot grounded receptacle is available.



## 7.0 Illustrations

### Illustration 4a- Installation, Operating and Safety Instructions (Continued)

#### Instructions d'utilisation et de soins

Les lettres majuscules dans les instructions relatives aux risques d'incendie, d'électrocution et de blessures aux personnes ne doivent pas avoir moins de 2,1 mm (1/12 po) de hauteur et les lettres minuscules ne doivent pas être inférieures à 1/16 po (1,6 mm) de haut.

Les «INSTRUCTIONS IMPORTANTES» et «CONSERVER CES INSTRUCTIONS» doivent être en lettres majuscules d'au moins 4,8 mm (3/16 po) de hauteur.

Les articles peuvent être numérotés. Dans la liste des articles, le premier doit être "Lisez toutes les instructions avant d'utiliser le radiateur." Et le dernier doit être "CONSERVEZ CES INSTRUCTIONS." Autres instructions importantes concernant le risque d'incendie, d'électrocution et de blessures aux personnes jugées appropriées par le fabricant peut être inséré.

#### INSTRUCTIONS IMPORTANTES

1. Lisez toutes les instructions avant d'installer ou d'utiliser ce radiateur.
2. Ce radiateur est chaud lorsqu'il est utilisé. Pour éviter les brûlures, ne laissez pas la peau nue toucher les surfaces chaudes. Gardez les matériaux combustibles, tels que meubles, oreillers, literie, papiers, vêtements, etc., et les rideaux à au moins un pied de l'avant du radiateur et gardez à l'écart des côtés et de l'arrière (restrictions latérales et arrière). appareils de chauffage dédiés uniquement)
3. Une extrême prudence est nécessaire lorsque tout appareil de chauffage est utilisé par ou près des enfants ou des personnes handicapées et chaque fois que le chauffage est laissé en fonctionnement et sans surveillance.
4. Ne faites pas fonctionner l'appareil de chauffage après un mauvais fonctionnement. Débranchez l'alimentation du panneau de service et faites inspecter le chauffage par un électricien réputé avant de le réutiliser.
5. Ne pas utiliser à l'extérieur. (Omis si le radiateur est prévu pour une utilisation en extérieur.)
6. Pour débrancher l'appareil de chauffage, éteignez les commandes et coupez l'alimentation du circuit de chauffage au panneau de déconnexion principal (ou utilisez l'interrupteur de déconnexion interne s'il est fourni).
7. Ne pas insérer ou permettre à des objets étrangers de pénétrer dans une ouverture de ventilation ou d'échappement, car cela pourrait provoquer un choc électrique ou un incendie, ou endommager le chauffage.
8. Pour éviter un risque d'incendie, ne bloquez pas les entrées d'air ou les gaz d'échappement de quelque manière que ce soit.
9. Un appareil de chauffage a des pièces chaudes et des arcs ou des étincelles à l'intérieur. Ne l'utilisez pas dans des endroits où de la peinture à l'essence ou des vapeurs ou liquides inflammables sont utilisés ou entreposés.
10. Utilisez cet appareil uniquement comme décrit dans ce manuel. Toute autre utilisation non recommandée par le fabricant peut provoquer un incendie, une électrocution ou des blessures.
11. "CONSERVEZ CES INSTRUCTIONS"

#### Instructions de mise à la terre

Le manuel d'instructions des appareils de chauffage mis à la terre, reliés par câble, doit comprendre les termes suivants ou un libellé équivalent:

(Dans le cas d'un appareil de chauffage nominal pour une tension nominale de 120 volts.) Cet appareil de chauffage doit être utilisé sur 120 volts. Le cordon a une fiche comme indiqué en A sur la figure 60.1. Un adaptateur tel que montré en C est disponible pour connecter des fiches à trois lames de mise à la terre à des prises à deux fentes. La cosse de mise à la terre verte qui s'étend de l'adaptateur doit être connectée à une terre permanente telle qu'une boîte de sortie correctement mise à la terre. L'adaptateur ne doit pas être utilisé si une prise avec mise à la terre à trois emplacements est disponible.

8.0 Test Summary					
Due to the previous testing performed under Intertek Report GZ11100246-1 and 180100414HZH-001, only the following testing was performed.					
Evaluation Period	25-Apr-2019 to 13-May-2019		Project No.	190402458SHA	
Sample Rec. Date	22-Apr-2019	Condition	Prototype	Sample ID.	0190422-79
Test Location	Building No.86, 1198 Qinzhou Road (North), Shanghai 200233, P.R. China				
Test Procedure	Testing Lab				
Determination of the result includes consideration of measurement uncertainty from the test equipment and methods. The product was tested as indicated below with results in conformance to the relevant test criteria.					
The following tests were performed:					
Test Description		UL 1004-1:2013 Ed.2+R:07Aug2018 Clause	UL 1004-2:2014 Ed.2+R:06Feb2015 Clause	CSA C22.2#77:2014 Ed.8+E1 Clause	
Dielectric Voltage-Withstand Test		37	/	6.5	
Locked Rotor Temperature Test		/	3	6.4	
Locked Rotor Endurance Test		/	4	6.6	
Test Description		UL 5085-1:2006 Ed.1 +R:06Dec2013 & UL 5085-3:2006 Ed.1+R:30Nov2012 & (R2015) [CSA C22.2#66.1 :2006 Ed.1 +G1;G2] & (R2015) [CSA C22.2#66.3:2006 Ed.1 +G1] Clause			
Dielectric Voltage-Withstand Test		32			



8.0 Test Summary					
Evaluation Period	2022-07-08 to 2022-07-15		Project No.	220601493SHA	
Sample Rec. Date	5-Jul-2022	Condition	Prototype	Sample ID.	0220705-01
Test Location	Building No.86, 1198 Qinzhou Road (North), Shanghai 200233, P.R. China				
Test Procedure	Testing Lab				
Determination of the result includes consideration of measurement uncertainty from the test equipment and methods. The product was tested as indicated below with results in conformance to the relevant test criteria.					
The following tests were performed:					
Test Description			UL 2021:2015 Ed.4+R:14Dec2 016 Clause	(R2018)CSA C22.2#46:2013 Ed.9 Clause	
Power Input test			34	7.2	
Leakage Current Test			35	7.12	
Normal Temperature Test			36	7.4	
Conditions for Operation Test			37	/	
Abnormal Operation Test			41	/	
Dielectric Voltage-Withstand Test			46	7.5	
Temperature (abnormal)			/	7.6	
Test Description			UL 5085-1:2006 Ed.1+R:02Jun2022 UL 5085-3:2006 Ed.1+R:29Nov2017 (R2015) [CSA C22.2#66.1:2006 Ed.1+G1;G2] (R2015) [CSA C22.2#66.3:2006 Ed.1+G1] Clause		
Dielectric Voltage-Withstand Test			32		

8.1 Signatures			
A representative sample of the product covered by this report has been evaluated and found to comply with the applicable requirements of the standards indicated in Section 1.0.			
Completed by:	Jesse Jin	Reviewed by:	Jack Tang
Title:	Project Engineer	Title:	Mandated Reviewer
Signature:	Signature on file	Signature:	Signature on file

## 9.0 Correlation Page For Multiple Listings

The following products, which are identical to those identified in this report except for model number and Listee name, are authorized to bear the ETL label under provisions of the Intertek Multiple Listing Program.

<b>BASIC LISTEE</b>	NINGBO GENGMEI ELECTRIC APPLIANCE TECH CO., LTD.
Address	Guangxi Industrial Estate, Yinjiang Town, Haishu District, Ningbo
Country	China
Product	Electric Fireplace

<b>MULTIPLE LISTEE 1</b>	Worldwide Distribution,LLLP
Address	9905 Old St Augustine Road, Ste 105 Jacksonville, FL 32257
Country	USA
Brand Name	NA

<b>ASSOCIATED MANUFACTURER</b>	NINGBO GENGMEI ELECTRIC APPLIANCE TECH CO., LTD.
Address	Guangxi Industrial Estate, Yinjiang Town, Haishu District, Ningbo
Country	China

MULTIPLE LISTEE 1 MODELS	BASIC LISTEE MODELS
EF-30A	EF-30A
EF-30B	EF-30B
EF-30C	EF-30C
EF-30D	EF-30D
EF-30BF	EF-30BF
EF-36	EF-36
EF-48	EF-48
ZCR 3830	ZCR 3830
ZCR 3836	ZCR 3836
WF1436	WF1436
WF-32S	WF-32S
WF-36S	WF-36S
WF-40S	WF-40S
WF-48S	WF-48S
EF-30BFGPLED	EF-30BFGPLED
WF-26SGPLED	WF-26SGPLED
WF-36SGPLED	WF-36SGPLED
WF-36SLGLED	WF-36SLGLED
WF-40SGPLED	WF-40SGPLED
WF-48SGPLED	WF-48SGPLED
WF-48SLGGPLED	WF-48SLGGPLED

9.0 Correlation Page For Multiple Listings	
MULTIPLE LISTEE 2	None
Address	
Country	
Brand Name	
ASSOCIATED MANUFACTURER	
Address	
Country	
MULTIPLE LISTEE 2 MODELS	BASIC LISTEE MODELS

9.0 Correlation Page For Multiple Listings	
MULTIPLE LISTEE 3	Ningbo Heyme Information Technology Co.,Ltd.
Address	2-1,2-2, No 247 Wangshan Road, Jiangbei District, Ningbo, Zhejiang.
Country	China
Brand Name	NA
ASSOCIATED MANUFACTURER	NINGBO GENGMEI ELECTRIC APPLIANCE TECH CO., LTD.
Address	Guangxi Industrial Estate, Yinjiang Town, Haishu District, Ningbo
Country	China
MULTIPLE LISTEE 3 MODELS	BASIC LISTEE MODELS
QRBL-G42	IF-40FSB
QRBL-G50	IF-50FSB
QRBL-G60	IF-60FSB
SH-BLQR30	IF-1330TCL
SH-BLQR36	IF-1336TCL
SH-BLQR40	IF-1340TCL
SH-BLQR50	IF-1350TCL
SH-BLQR60	IF-1360TCL

9.0 Correlation Page For Multiple Listings	
MULTIPLE LISTEE 4	MG HOME SOLUTION LLC
Address	2100 Illinois Street, Suite 200, St. Charles, IL 60174
Country	USA
Brand Name	Equator, VITARA
ASSOCIATED MANUFACTURER	NINGBO GENGMEI ELECTRIC APPLIANCE TECH CO., LTD.
Address	Guangxi Industrial Estate, Yinjiang Town, Haishu District, Ningbo
Country	China
MULTIPLE LISTEE 4 MODELS	BASIC LISTEE MODELS
PFL 255, VPFL5000W	EF-30C



## 10.0 General Information

The Applicant and Manufacturer have agreed to produce, test and label ETL Listed products in accordance with the requirements of this Report. The Manufacturer has also agreed to notify Intertek and to request authorization prior to using alternate parts, components or materials.

### COMPONENTS

Components used shall be those itemized in this Intertek report covering the product, including any amendments and/or revisions.

### LISTING MARK

The ETL Listing mark applied to the products shall either be separable in form, such as labels purchased from Intertek, or on a product nameplate or other media only as specifically authorized by Intertek. Use of the mark is subject to the control of Intertek.

The mark must include the following four items:

- 1) applicable country identifiers "US" and/or "C" or "US", "C" and "EU"
- 2) the word "Listed" or "Classified" or "Recognized Component" (whichever is appropriate)
- 3) a control number issued by Intertek
- 4) a product descriptor that identifies the standards used for certification. Example:

**For US standards**, the words, "Conforms to" shall appear with the standard number along with the word, "Standard" or "Std." Example: "Conforms to ANSI/UL Std. XX."

**For Canadian standards**, the words "Certified to CAN/CSA Standard CXX No. XX." shall be used, or abbreviated, "Cert. to CAN/CSA Std. CXX No. XX."

Can be used together when both standards are used.

**If all standards on the ATM have the same standard title**, the shared title or its abbreviation may be used in place of the examples above. Example: "Medical Electrical Equipment" or "MEE"; "Information Technology Equipment" or "ITE"; "Audio/Video Information And Communication Technology Equipment" or "A/V ICTE".

**Note: A facsimile must be submitted to Intertek, Attn: Follow-up Services for approval prior to use.**

The facsimile need not have a control number. A control number will be issued **after signed Certification Agreements** have been received by the Follow-up Services office, approval of the facsimile of your proposed Listing Mark, satisfactory completion of the Listing Report, and scheduling of a factory assessment in your facility.

### MANUFACTURING AND PRODUCTION TESTS

Manufacturing and Production Tests shall be performed as required in this Report.

### FOLLOW-UP SERVICE

Periodic unannounced audits of the manufacturing facility (and any locations authorized to apply the mark) shall be scheduled by Intertek. An audit report shall be issued after each visit. Special attention will be given to the following:

1. Conformance of the manufactured product to the descriptions in this Report.
2. Conformance of the use of the ETL mark with the requirements of this Report and the Certification Agreement.
3. Manufacturing changes.
4. Performance of specified Manufacturing and Production Tests.

In the event that the Intertek representative identifies non-conformance(s) to any provision of this Report, the Applicant shall take one or more of the following actions:

1. Correct the non-conformance.
2. Remove the ETL Mark from non-conforming product.
3. Contact the issuing product safety evaluation center for instructions.

### 10.1 Evaluation of Unlisted Components

Because Unlisted Components are uncontrolled, and they do not fall under a third party follow up program, Intertek may require these components to be tested and/or evaluated at least once annually, more often for certain components, as part of the independent certification process. The Unlisted Components in Section 5.0 require testing and/or evaluation as indicated.

**The Applicant will be notified, in writing, via the applicable contact methods, as defined in Section 1.0, when these components must be selected and sent to Component Evaluation Center (CEC) for re-evaluation.**

**Due to particular testing requirements, some components may be requested to be shipped to specific labs. Thus, specific shipment destination(s) for each sample will be provided in the written notification.**

Managing CEC Location:  
Intertek Testing Services Shanghai Limited  
ETL Component Evaluation Center  
Building No. 86, 1198 Qinzhou Road (North)  
Shanghai 200233, China  
Attn: Ms. Emiliana Zhou

Sample Disposition: Due to the destructive nature of the testing, all samples will be discarded at the conclusion of testing unless, the manufacturer specifically requests the return of the samples. The request for return must accompany the initial component shipment.

## 11.0 Manufacturing and Production Tests

The manufacturer agrees to conduct the following Manufacturing and Production Tests as specified:

### Required Tests

Dielectric Voltage Withstand Test ,  
Grounding Continuity Test

## 11.1 Dielectric Voltage Withstand Test

### Method

One hundred percent of production of the products covered by this Report shall be subjected to a routine production line dielectric withstand test.

The test shall be conducted on products, which are fully assembled. Prior to applying the test potential, all switches, contactors, relays, etc., should be closed so that all primary circuits are energized by the test potential. If all primary circuits cannot be tested at one time, then separate applications of the test potential shall be made.

The test voltage specified below shall be applied between primary circuits and accessible dead-metal parts. The test voltage may be gradually increased to the specified value but must be maintained at the specified value for one second or one minute as required.

### Test Equipment

The test equipment shall incorporate a transformer with an essentially sinusoidal output, a means to indicate the applied test potential, and an audible and/or visual indicator of dielectric breakdown.

The test equipment shall incorporate a voltmeter in the output circuit to indicate directly the applied test potential if the rated output of the test equipment is less than 500VA.

If the rated output of the test equipment is 500VA or more, the applied test potential may be indicated by either:

- 1 - a voltmeter in the primary circuit;
- 2 - a selector switch marked to indicate the test potential; or
- 3 - a marking in a readily visible location to indicate the test potential for test equipment having a single test potential output.

In cases 2 and 3, the test equipment shall include a lamp or other visual means to indicate that the test potential is present at the test equipment output. All test equipment shall be maintained in current calibration.

## Products Requiring Dielectric Voltage Withstand Test:

<u>Product</u>	<u>Test Voltage</u>	<u>Test Time</u>
All products covered by this Report.	1000V	60 s
	or	
	1200V	1 s

## **11.2 Grounding Continuity Test**

### Method

Each product listed below shall be subjected to a test to determine that there is continuity between accessible dead-metal parts of the product and the grounding pin or blade of the attachment plug.

If all accessible dead metal is connected, only a single test need be performed. A visual or audible device (ohmmeter, buzzer, etc.) may be used to indicate grounding continuity.

### **Products Requiring Grounding Continuity Test:**

All products covered by this Report.

## 12.0 Revision Summary

The following changes are in compliance with the declaration of Section 8.1:

[illegible]