

.. INSTALLATION INSTRUCTIONS



AFTER-SALES SERVICE

1. Contact Customer Service: If you discover a quality issue, please contact us
2. Provide Information: Please provide your order number, product model, and a description of the problem (photos or videos recommended)
3. Problem Diagnosis: Our customer service team will respond within 24 hours to help diagnose the issue and provide a solution
4. Repair or Replacement: Depending on the situation, we will provide:
 - Free replacement parts
 - Complete replacement (for major quality)

WARNING



Pay attention to safety.



Beware of pinching hazards.



Adult assembly only.

Important!

Assembly must be performed by adults only. Keep children away to prevent injury or accidental swallowing of screws and small hardware parts.

PRODUCT OVERVIEW

Item	Details
Product name	Minimalist Kids Study Chair
Main purpose and intended users	Suitable for aged 3 and above (children must be used under adult supervision). Recommended height range: 120-180cm (47.3-70.9in). For reading, writing, drawing, and crafts.
Environment of use	Indoor use only.
Environmental impact	None.
Safety	Do not disassemble any parts to avoid accidental injury.

CHARACTERISTICS AND PARAMETERS

Feature	How it works	Specification
Backrest height adjustment	Turn the backrest height adjustment knob to move and lock the backrest at a suitable height.	120-180cm (47.3-70.9in)
Seat height adjustment	Turn the seat height adjustment knob to move and lock the seat at a suitable height.	32-54cm (12.6-21.3in)
Seat depth (front-to-back) adjustment	Use the lever (or adjustment part) under the seat to adjust the seat depth.	0-6cm (0-2.4 in)
Overall dimensions	—	600x760x810mm (23.6X29.9X31.9in)

WARNING



Pay attention to safety.



Beware of pinching hazards.



Adult assembly only.

Important!

Assembly must be performed by adults only. Keep children away to prevent injury or accidental swallowing of screws and small hardware parts.

PRODUCT OVERVIEW

Item	Details
Product name	Minimalist Kids Study Chair
Main purpose and intended users	Suitable for aged 3 and above (children must be used under adult supervision). Recommended height range: 120-180cm (47.3-70.9in). For reading, writing, drawing, and crafts.
Environment of use	Indoor use only.
Environmental impact	None.
Safety	Do not disassemble any parts to avoid accidental injury.

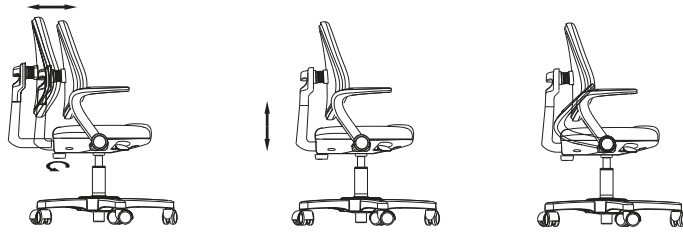
CHARACTERISTICS AND PARAMETERS

Feature	How it works	Specification
Backrest height adjustment	Turn the backrest height adjustment knob to move and lock the backrest at a suitable height.	120-180cm (47.3-70.9in)
Seat height adjustment	Turn the seat height adjustment knob to move and lock the seat at a suitable height.	32-54cm (12.6-21.3in)
Seat depth (front-to-back) adjustment	Use the lever (or adjustment part) under the seat to adjust the seat depth.	0-6cm (0-2.4 in)
Overall dimensions	—	600x760x810mm (23.6X29.9X31.9in)

MAIN MATERIAL

Main material	Application area	Characteristics
Textile fabric	Backrest, seat cushion	High eco-friendly grade, scratch-resistant, easy to clean, strong load-bearing and deformation resistance
Foam	Backrest	Good elasticity, comfortable, not easy to deform
Foam&Latex	Seat cushion	Good elasticity, comfortable, not easy to deform
Plastic parts	Chair legs, armrests	Strong toughness, impact-resistant
Carbon steel	Support post	Not easy to rust, corrosion-resistant, good gloss, strong load-bearing capacity
Powder coating	Surface treatment for metal parts	Long-lasting color, not easy to fade

ADJUSTMENT METHOD



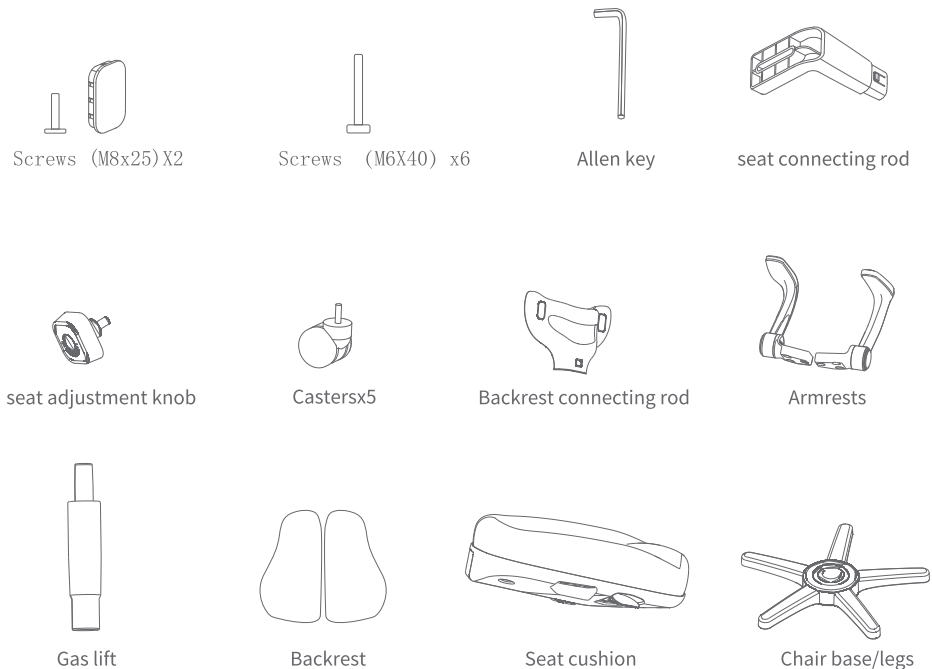
- **Seat depth adjustment:** Use the adjustment mechanism to move the seat to a suitable position, then lock it in place.
- **Backrest and seat height adjustment:** Use the adjustment mechanism to set the backrest and seat to a suitable height, then lock them in place.
- **Armrest angle adjustment:** Hold the armrest and rotate it backward.

FAILURE ANALYSIS AND TROUBLESHOOTING

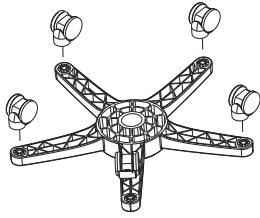
Issue	Possible Cause	Troubleshooting / Solution
Seat wobbles after installation	The gas lift is not fully seated or secured to the underside of the seat.	Remove the gas lift and seat, realign them, then reinstall until they are fully engaged and securely fitted.
Seat slides down when sitting	The seat adjustment knob is not engaged in the corresponding hole on the chair post.	Turn the adjustment knob counterclockwise. Slide the seat up or down to the desired height. Align the internal locating pin of the knob with the hole on the chair post, then tighten the knob clockwise.

Note: The above provides only simple solutions for common issues. If you have other questions, please contact our customer service.

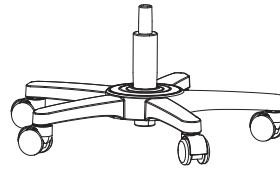
PART DETAIL



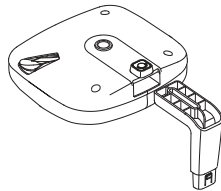
INSTALLATION STEPS



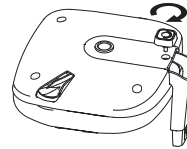
01 Insert the casters into the chair base one by one.



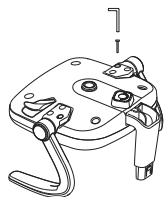
02 Insert the gas lift into the center of the chair base.



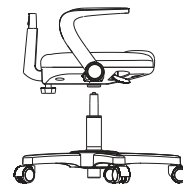
03 Insert the seat connecting rod into the seat base and secure it in place.



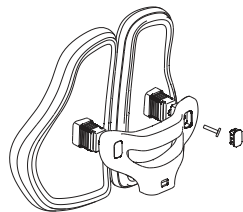
04 Install the seat cushion assembly (from Step 3) onto the chair post. Make sure the holes are aligned, then fully tighten the seat adjustment knob(s) to secure it.



05 Use six M6X40 screws to fasten the armrests onto the seat cushion.



06 Align the seat cushion with the top of the gas lift, then press down firmly so the seat cushion is fully seated on the gas lift.



07 Insert the backrest assembly into the chair post, then tighten the backrest knob firmly.



08 Insert the upper half of the backrest assembly into the chair post, then connect it with the lower half that is attached to the seat base.

Installation Notes

1. Assemble on a carpeted or padded surface to protect both the product and the floor.
2. Before assembly, lay out all parts on the floor to verify quantities and avoid missing parts.
3. After assembly, check the instructions step by step and confirm all screws are tightened before use.