

50 Litre Air Cooler with LED Display



IG9750

PO Number:

Please read these instructions carefully before use and retain for future reference

**Before switching on your appliance,
always check for any damage which may have been caused in transit**

CONTENTS

Important Safety Instructions.....	3-4
Specifications.....	5
Assembly Instructions.....	5
Operating Instructions.....	6-8
Cleaning and Maintenance	9
Fuse Replacement.....	9
Trouble shooting Guide.....	10
Disposal Information.....	11
Terms and Conditions and Warranty Information.....	12-13

SAFETY INSTRUCTIONS

Carefully read the instructions before operating the unit.
Please retain this manual for future reference.

Important: This product is intended for domestic and light office use ONLY and not for commercial, industrial or outdoor use. When using electrical appliances, basic safety precautions should always be followed:

1. All electrical repairs must be carried out by a qualified electrician. Inadequate repairs may result in a major source of danger for the user and invalidate the warranty.
2. Do not operate the unit if the plug or cord is damaged, after it malfunctions or has been dropped or damaged in any way, it must be repaired by a qualified electrician.
3. Use of an extension cord is not recommended with this product.
4. This unit should only be used by adults.
5. Keep the unit and its cord out of reach of children.
6. Children shall not play with the appliance.
7. Cleaning and user maintenance shall not be made by children.
8. The unit should not be used by persons with reduced physical, sensory or mental capabilities.
9. It is not recommended to place this appliance in cupboards, closets, boats, caravans or similar locations.
10. Do not use the unit in a wet room, such as a bathroom or laundry room or in areas where the unit is likely to get splashed.
11. Do not place the unit directly underneath a wall socket.
12. Always place unit on a dry and stable surface.
13. Keep unit at least 1 metre away from TV's and Radio's to prevent interference.
14. Do not cover or obstruct the unit's filter or louvres.
15. Do not insert fingers, pencils or any other objects into the air inlets or outlets of the unit.
16. Do not let chemical substances come into contact with the appliance.

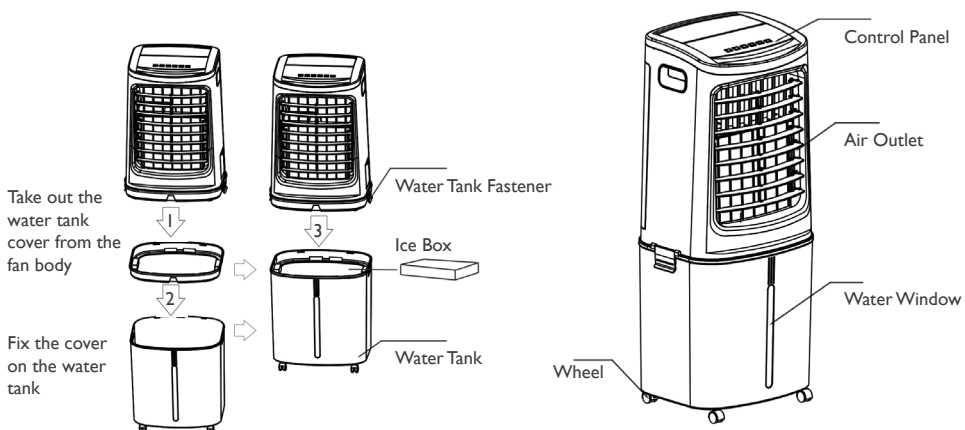
17. It is not recommended to use flammable substances or vapours such as alcohol, insecticides, petrol, etc. whilst the unit is in use.
18. Do not clean the unit by spraying it or immersing in water.
19. Do not unplug the unit while it is working, this could damage the electronic circuits. Always use the control panel to start and stop the unit.
20. Always turn the unit off when not in use by removing the plug from the wall socket; ensuring to pull the plug top and not the cord. Always turn off the unit before cleaning, carrying out maintenance or moving location.
21. Do not pull or place the electrical cable near a source of heat: always unroll it completely to avoid dangerous overheating.
22. The filter must be used with the product at all times, when removing it for clearing always turn the unit off and unplug from the mains wall socket.
23. Always turn off unit, unplug and empty the water tank before placing into storage for a long period of time.

TECHNICAL SPECIFICATION

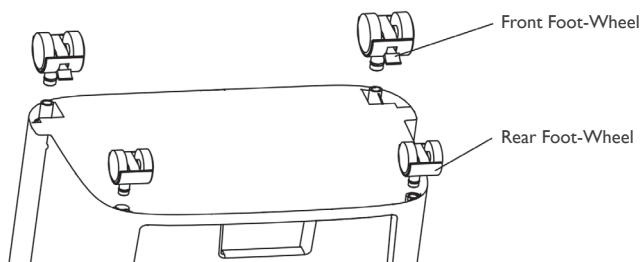
Model	IG9750
Supply Voltage:	220-240V, 50Hz
Max Output:	200W
Max Airflow Volume:	798m ³ /h
Water tank:	50 Litres
Net Weight:	15.3kg

ASSEMBLY INSTRUCTIONS

Installation of the Water Tank:

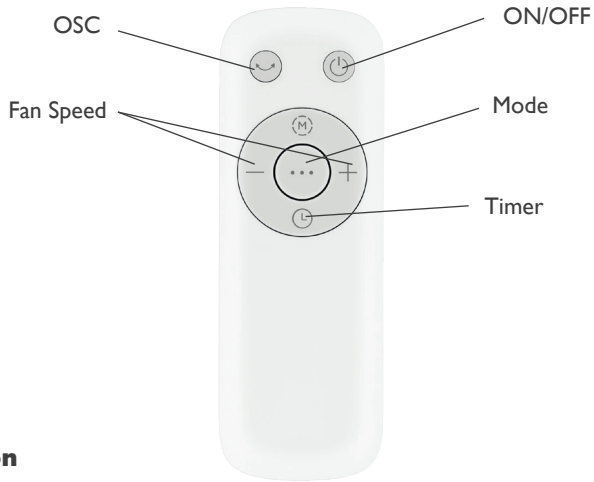


Foot-Wheel Installation:

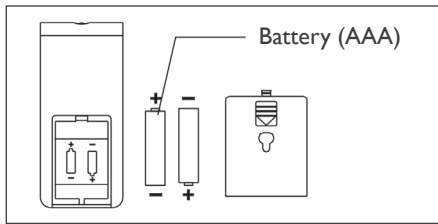


OPERATING INSTRUCTIONS

Remote Control



Battery Installation



IMPORTANT: Effective range of remote control: within 5m distance and 30 degree angle from front of product.



Humidification (Note: This unit will only operate as a humidifier in rooms with a high ambient temperature. Use water at room temperature. Do not use the ice packs.)

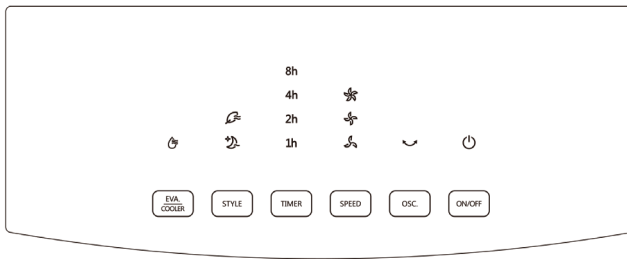
Functions

Normal - Normal function. There will be three speed levels.

Natural - The wind will simulate the natural winds found outdoors and offer a unique natural wind setting

Sleep - The wind will be slumberous. You can chose this mode when you sleep.

Control Panel



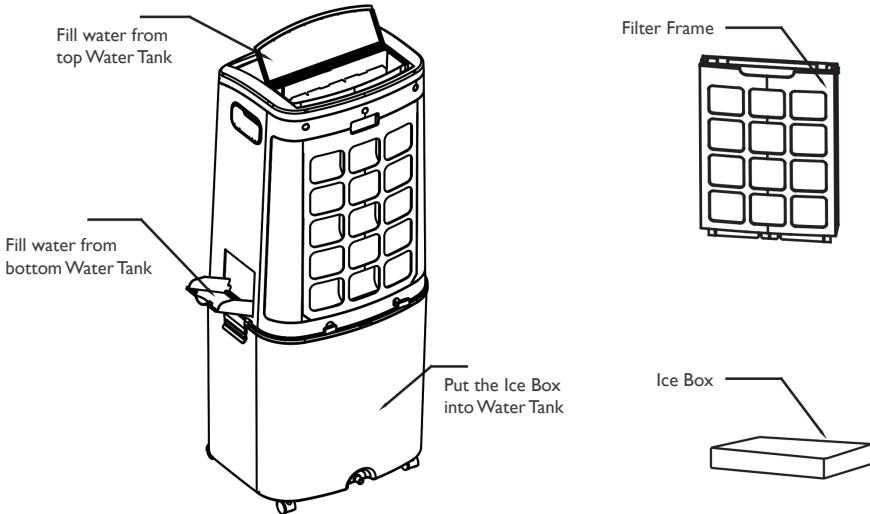
Press a key on the unit to activate a corresponding function. For instance:

- Press [OSC.] key to activate or deactivate Swing Function
Note: Manual horizontal blade allows tilting flow direction
- Press [SPEED] key to adjust 3 speeds of air flow
- Press [STYLE] key to switch between Normal, Natural and Sleep functions
- Press [TIMER] key to set 1-12 hour timer setting
- When [EVA/COOLER] key is pressed, the indicator lights up constantly if the operation is normal; when the indicator flashes, it denotes a water shortage, please add water immediately

IMPORTANT: Push buttons on the unit may differ based on the actual product model.

Add Water

Add water from the top: Rotate Water Tank's top cover, fill with water
Add water from the side: Rotate Water Tank's side cover, fill with water



IMPORTANT:

- When humidifying, the water level in the Water Tank must remain under the MAX indication; replenish water if level drops below the MIN indication
- If the water level in the Water Tank is below the minimum scale marked on Water Display Window, don't use the humidification function
- When the water level is lower than the minimum scale, the unit will emit a 3 second warning sound, after which the water pump will stop running.
- When the water level exceeds the maximum, the unit shall make 10 seconds buzzing warning sound, to prevent the Water Tank overflowing.

Ice Box

The ice box can absorb the heat in the water, which can lower the temperature of the water tank. It can make the air flow cooler.

1. Take out the ice box and put it into the freezer, until the ice box is totally frozen.
2. Put the frozen ice box into the water tank.

CLEANING & MAINTENANCE

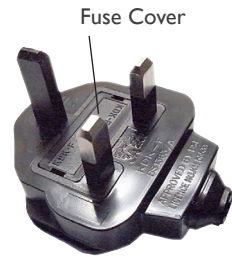
The fan requires little maintenance. Do not try to fix it by yourself. Refer it to qualified service personnel if service is needed.

1. Before cleaning and assembling, fan must be unplugged.
2. To ensure sufficient air supply, the honeycomb filter and dust filter should be cleaned regularly.
3. Please wipe the exterior parts with a soft cloth soaking a mild detergent.
4. Do not use any abrasive detergent or solvents to avoid scratching the surface.
Do not use any of the following as a cleaner: gasoline, thinner.
5. Do not allow water or any other liquid into the motor housing or interior parts.

MAINS PLUG FUSE REPLACEMENT

Fuse Replacement (Class II)

Remove the fuse cover with a small flat head screw driver. Take out the fuse and replace with a new fuse of the same Amp. Replace the fuse cover and push back into place.



TROUBLE SHOOTING GUIDE

If you experience difficulties with the appliance, please check the suggestions below before contacting customer services:

Problem	Solution
The unit will not switch on	<ul style="list-style-type: none">• Check Trip Switch / Fuse• Check if the plug is connected to mains socket correctly• Check batteries in the remote control
Runs for a short while and then switches off	<ul style="list-style-type: none">• Check if air outlet is blocked, if so remove obstacle• Check if Timer function has been activated
The unit has been running for a long period and then switches off	<ul style="list-style-type: none">• The overheat protection has been activated to protect the motor – turn unit off for a least 10 minutes and then switch back on
Runs without cooling in EVA/COOLER mode and Empty Tank Indicator blinking	<ul style="list-style-type: none">• The water tank is empty and needs to be re-filled• Check if the air filter is dirty – if so, clean• Check if air outlets or inlets are blocked
Water is leaking from unit when moving	<ul style="list-style-type: none">• Drain the water tank – refer to Cleaning and Maintenance on Page 7• Ensure rubber drainage plug is securely fitted in water tank• Ensure unit is located on a flat and even surface
The honeycomb filter is blocked with dust.	<ul style="list-style-type: none">• Pull down the honeycomb filter and clean it.
The air inlet is blocked with dust	<ul style="list-style-type: none">• Remove the foreign matter

DISPOSAL INFORMATION

The European Directive 2012/19/EU on Waste Electrical and Electronic Equipment (WEEE), requires that old household electrical appliances must not be disposed of in normal unsorted municipal waste.



Old appliances must be collected separately in order to optimise the recovery and recycling of the materials they contain and reduce the impact on human health and the environment.

The crossed out “wheeled bin” symbol on the product reminds you of your obligation, that when you dispose of the appliance it must be separately collected. Consumers should contact their local authority or retailer for information concerning the correct disposal of their old appliance.



Igenix Warranty Terms & Conditions

This product is guaranteed for a period of 12 months as standard from the date of purchase against mechanical and electrical defects. You can extend your warranty for a further 12 months by registering your product.

Upon registration we will cover your product for a period of 24 months from the original purchase date against any mechanical or electrical defects.

To qualify for the guarantee, the product must be used for domestic household use only and in accordance with the instructions in the user manual. Any misuse of the product will result in the warranty being void.

The guarantee does not cover accidental damage, misuse, neglect, tampering or incorrect adjustment or installation.

The guarantee will be rendered invalid if the product is resold, has had its serial number removed (or has an invalid serial number), or if an unauthorised person has carried out any repairs or alterations.

The warranty does not cover accessories or consumable parts that require replacement under normal use. This includes shelving, dials, filters, belts and trays etc.

In the unlikely event of a breakdown please refer to the Troubleshooting guide in your user manual and check all plugs, fuses and the electricity supply.

If you still require assistance please contact our Customer Service department on **01473 271 272** or write to us at the following address:

**Customer Service Department
38 Bluestem Road, Ransomes Europark
Ipswich, IP3 9RR**

Please quote the Product Code which begins 'IG' or 'DF' and the PO Number on the front of the instruction manual and give details of the exact fault. We will then decide whether to repair or replace the item.

Before we arrange the repair or replacement you will be required to return a copy of your proof of purchase. Please retain your original.

If an item is replaced within the agreed guarantee period, the guarantee for the replacement item will be calculated from the purchase date of the original.

In the event that the product is inspected and no fault is found or the product is not within the guarantee period you will be charged for the repair and any carriage costs.



Thank you for choosing Igenix

As a valued customer we would like to offer you a FREE 2 year warranty to cover your product against any electrical or mechanical defects.

This means that in the unlikely event you develop a fault or problem with your product we will happily repair or replace the item free of charge.

To qualify for the 2 year warranty you must register your product within 30 days of purchase. The full Terms & Conditions of our warranty policy are shown on the opposite page. They are also available on our website. **www.igenix.co.uk**