

# Installation Instruction

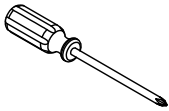


# Assembling

---

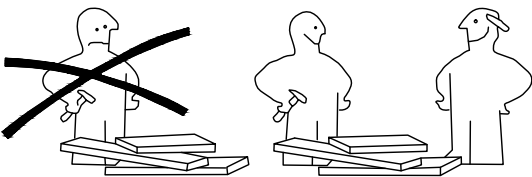
## What you need

- Use the packaging carton as a working surface to prevent product damage during assembly
- Phillips head screwdriver



## Weight Limitation


**100** | **35**  
 lbs table top      lbs per



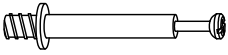
# What' included

---

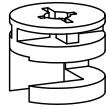
Code	Description	Qty
A	Cam Bolt M6X35MM	15
B	Cam Lock 15X10MM	15
C	Wooden Dowel M8X30MM	10
D	Screw M4X40MM	13
E	Screw M3.5X14MM	2
F	Screw M6X12MM	16
G	L-shaped metal sheet	2
H	Wrench M4X55MM	1
I	Adjustable Foot	4
J	Cam Bolt M4X10MM	4
K	Anchor	2
L	Solid wood handle	2
M	Circular hole Decals	15

# The Hardwares

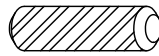
A



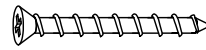
B



C



D



E



F



G



H



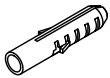
I



J



K



L



M



## IMPORTANT:

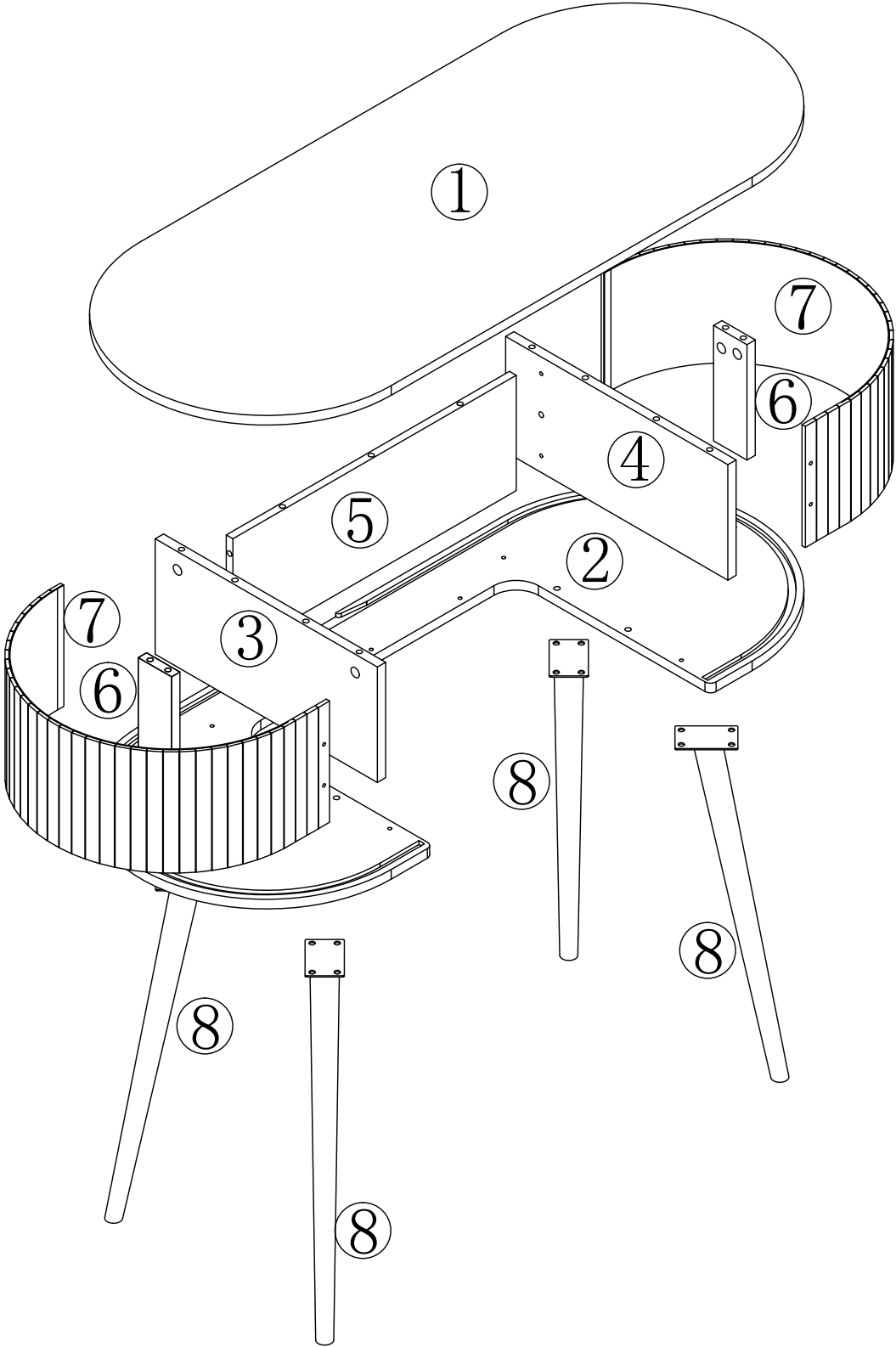
1. Do not tighten bolts / screws completely until all bolts / screws are lined up and inserted into holes.
2. Do not over tighten screws and bolts to avoid stripping
3. Please use hand tools to assemble this product, you can also use power tools (please use power tools carefully).

# Included Accessories

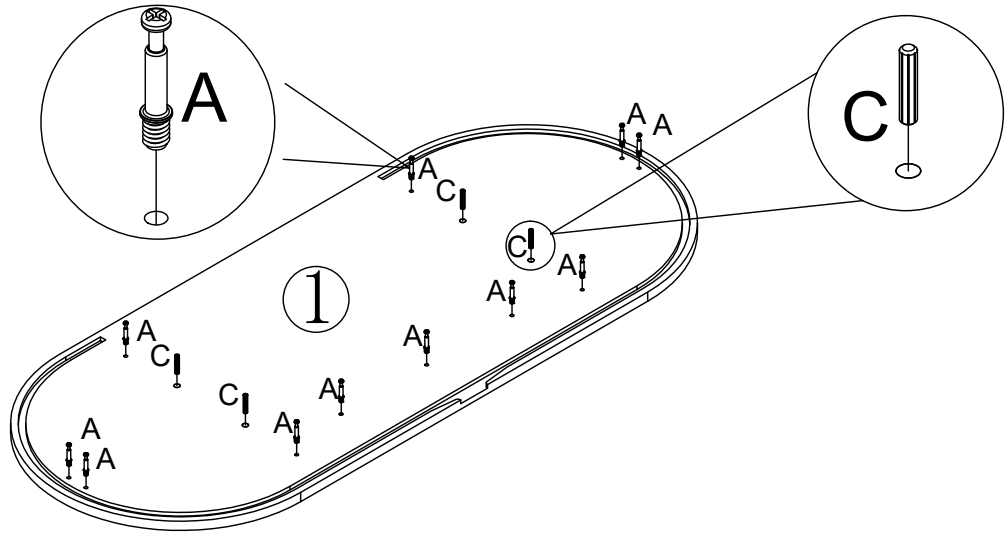
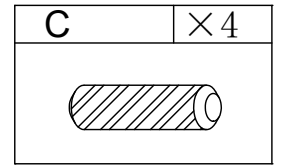
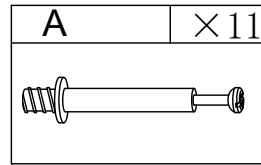
---

Code	Description	Qty
1	Cabinet Top	1
2	Bottom Panel	1
3	Left Side Panel	1
4	Right Side Panel	1
5	Back panel	1
6	Reinforcing plate	2
7	Coaming panel	2
8	Table legs	4

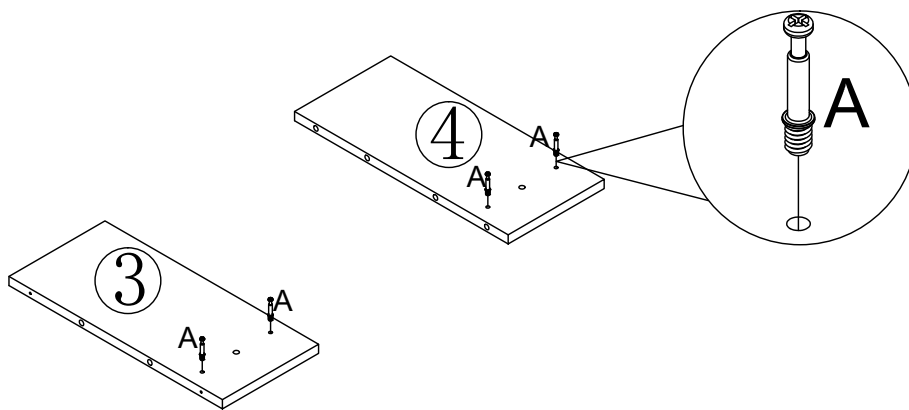
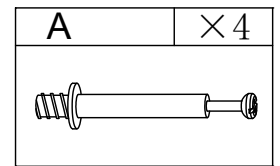
# The Accessoriss



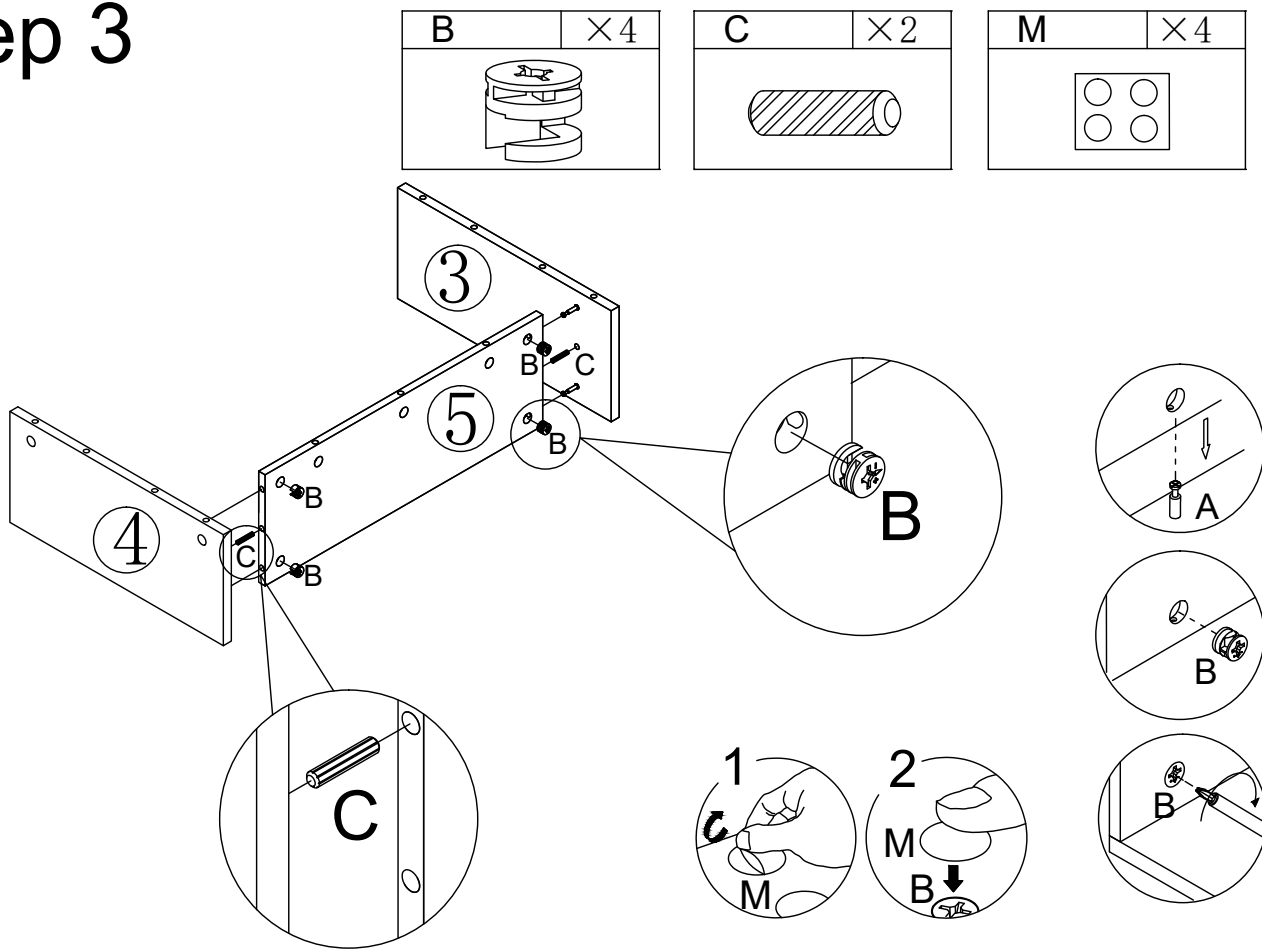
# Step 1



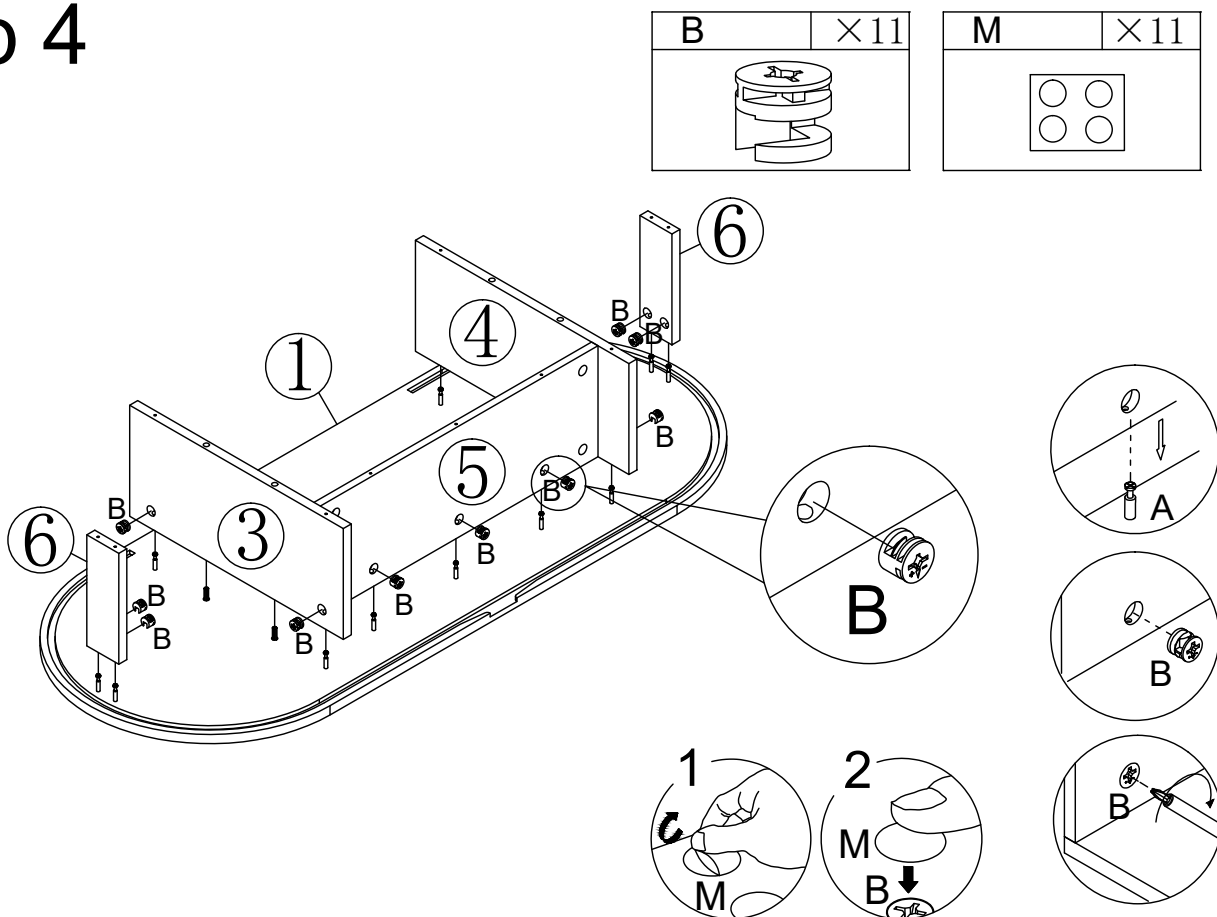
# Step 2



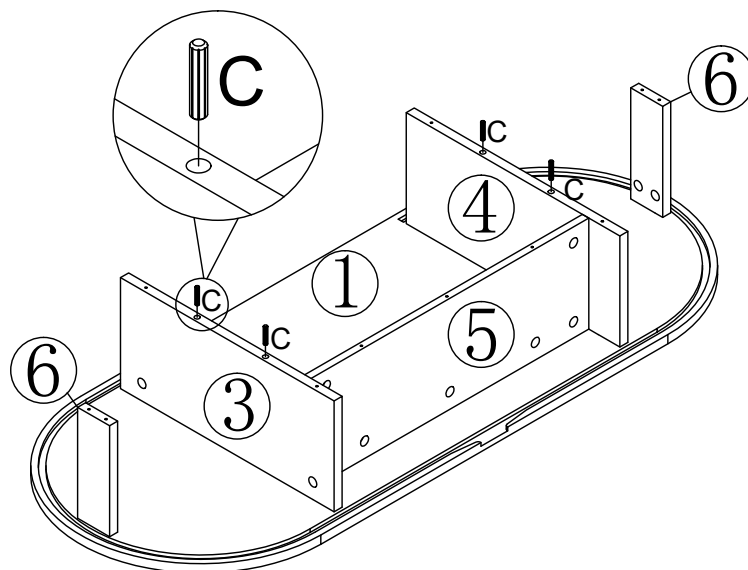
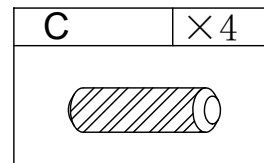
# Step 3



# Step 4



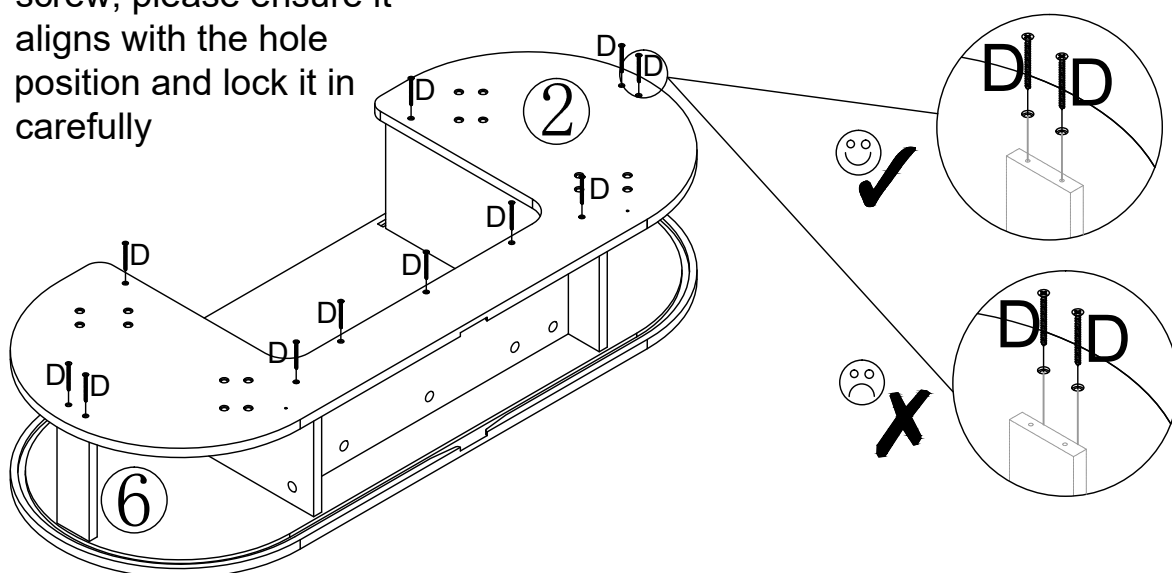
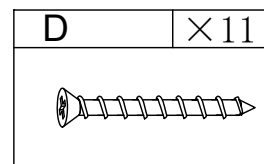
# Step 5



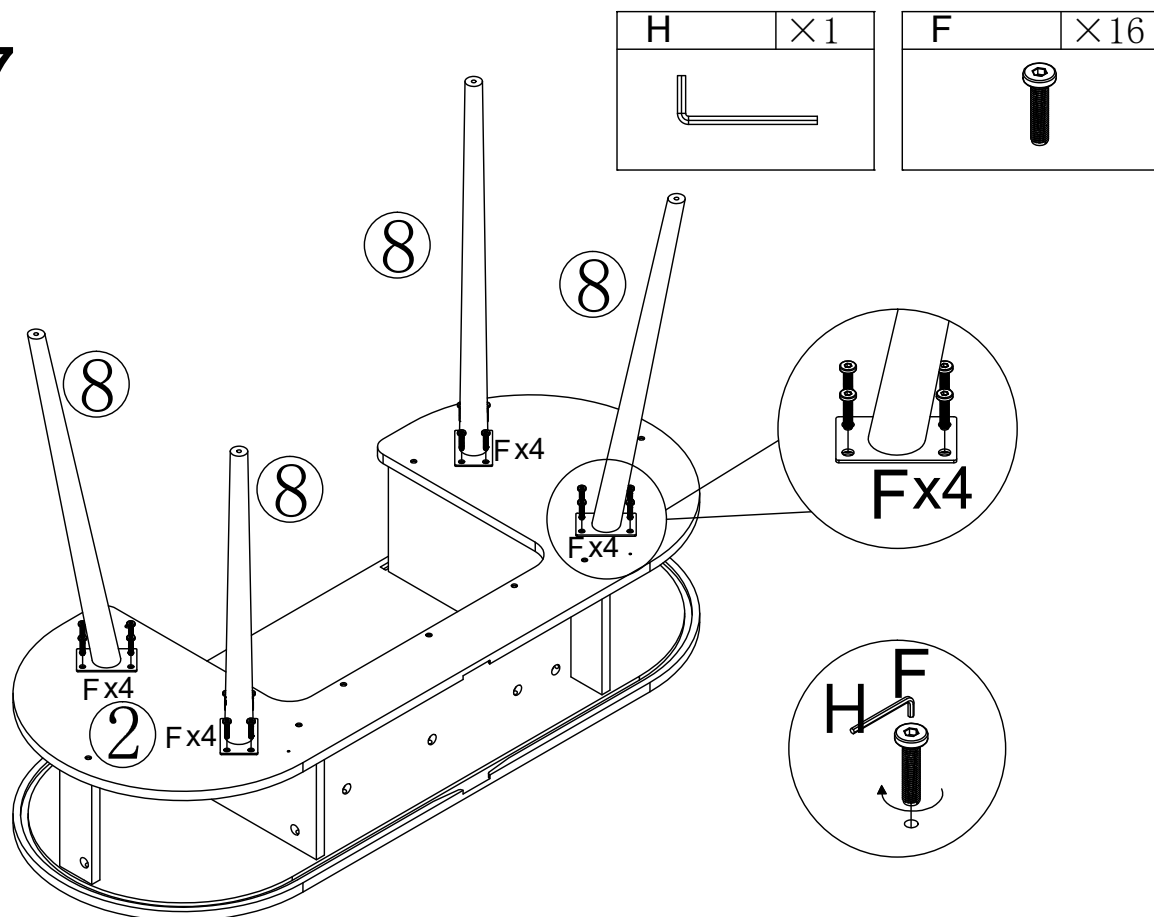
# Step 6



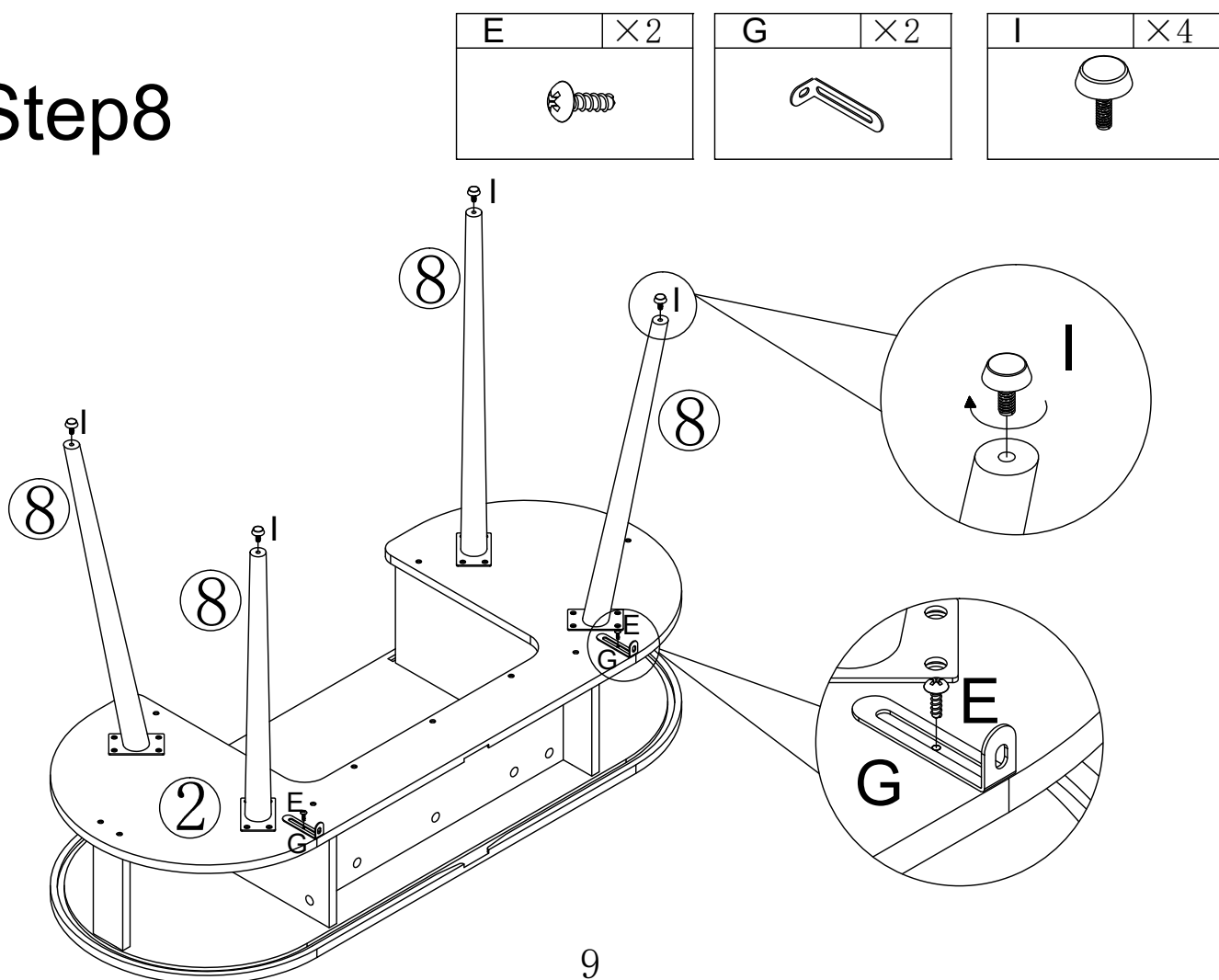
When tightening the D screw, please ensure it aligns with the hole position and lock it in carefully



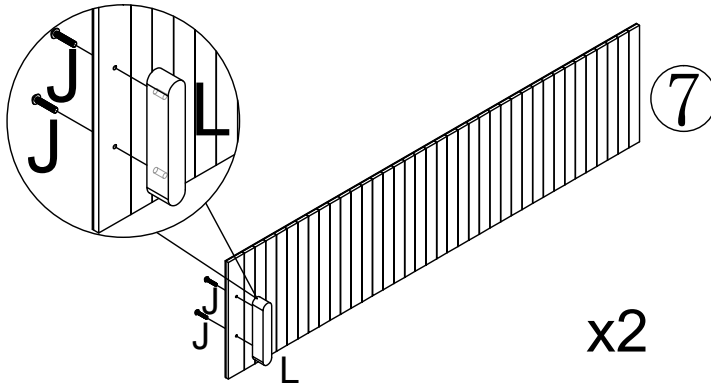
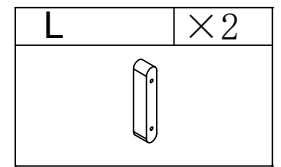
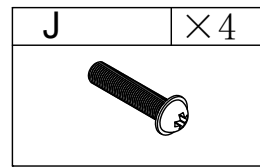
# Step7



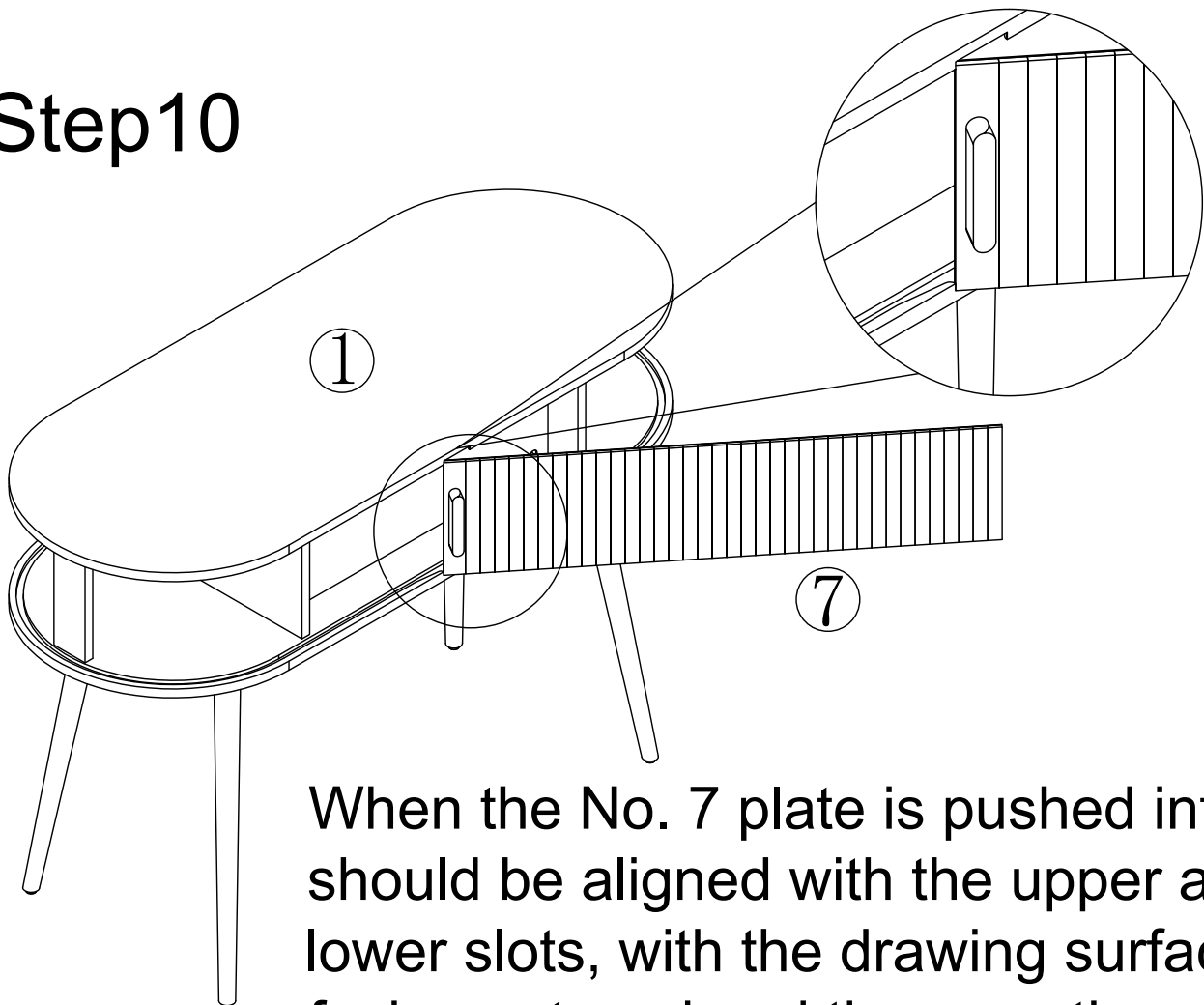
# Step8



# Step9

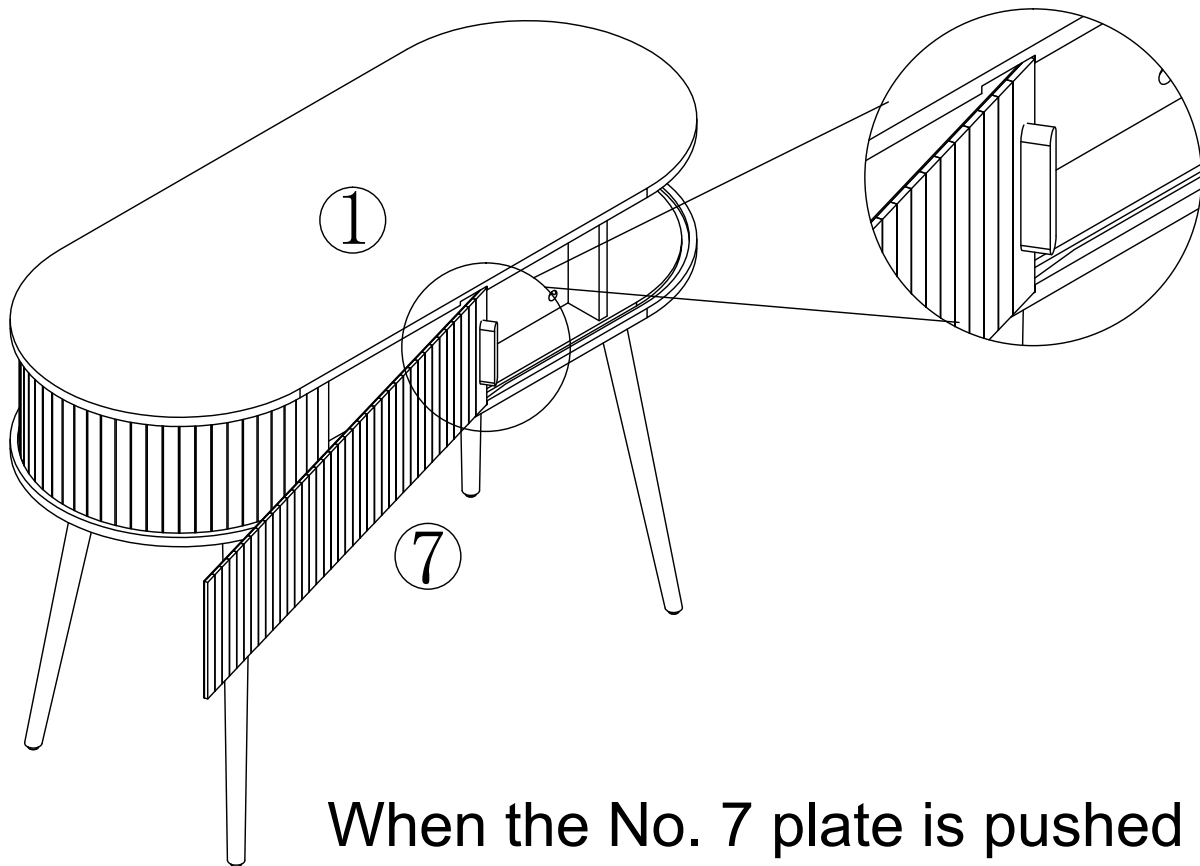


# Step10



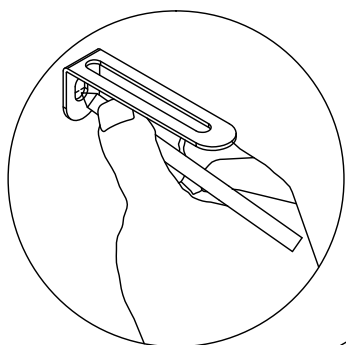
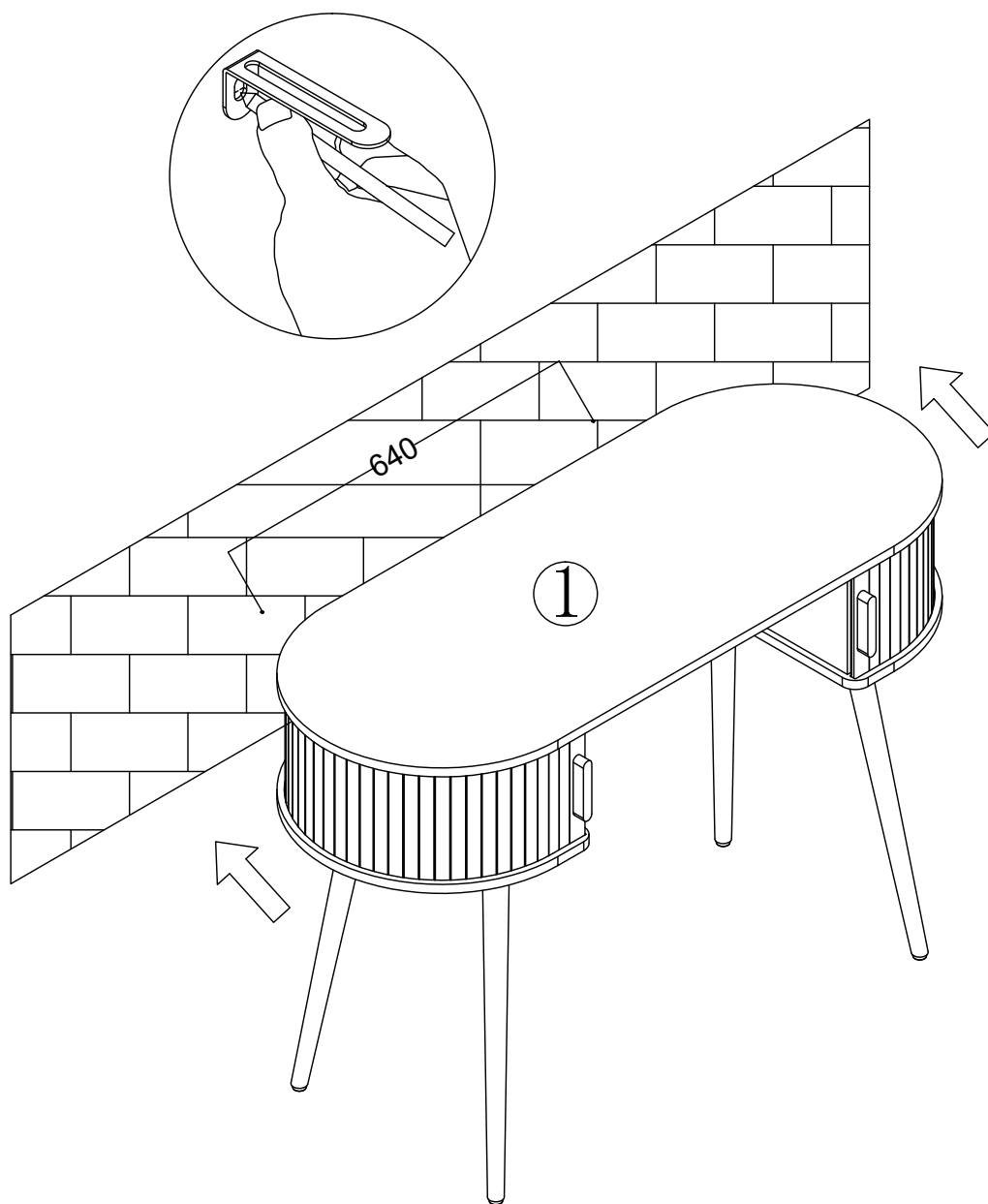
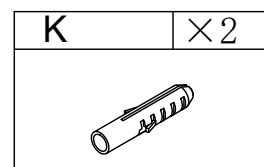
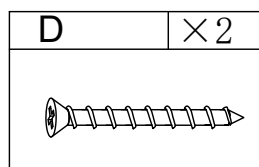
When the No. 7 plate is pushed into, it should be aligned with the upper and lower slots, with the drawing surface facing outward and the smooth surface facing inward

# Step 11

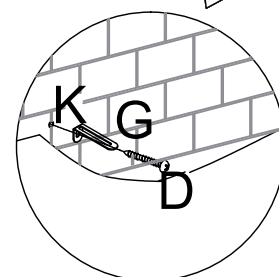
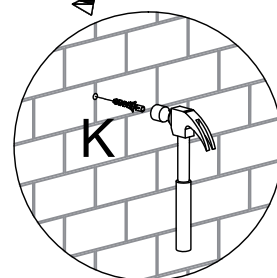
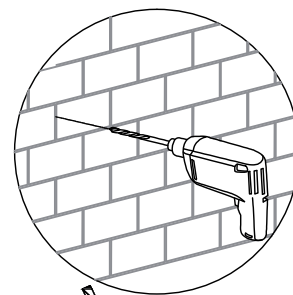


When the No. 7 plate is pushed into, it should be aligned with the upper and lower slots, with the drawing surface facing outward and the smooth surface facing inward

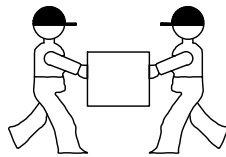
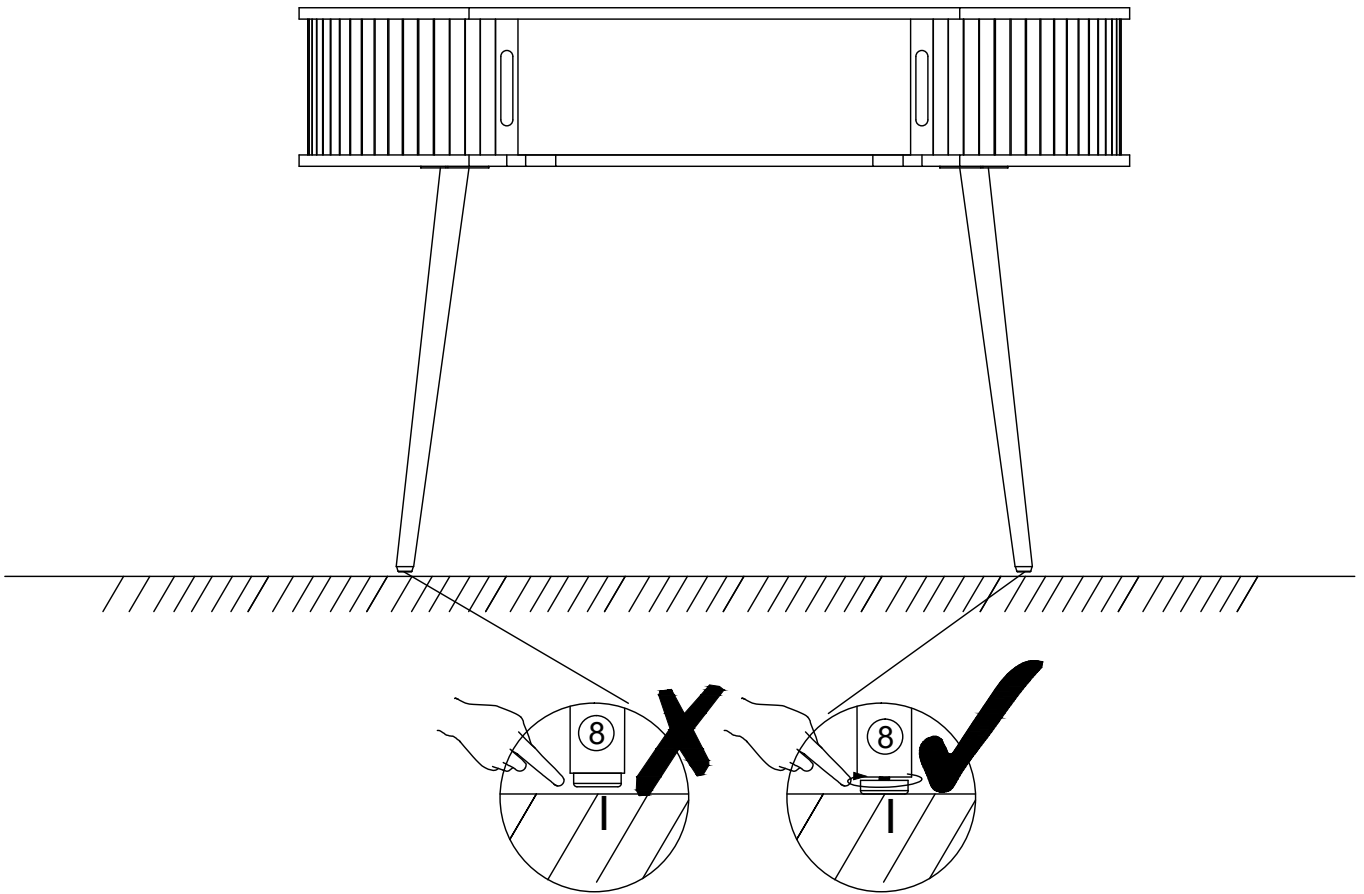
# Step 12



drill hole in wall



Please install the anti-tipping device according to the marked dimensions



Two people work together to move the table.  
Make sure you lift it off the ground.  
Don't push and pull.